

MINUTES

OF THE

SEVENTY-THIRD ANNUAL SESSION

OF THE

INDIANA CONFERENCE

OF THE

Wesleyan Methodist Connection
or Church, of America

HELD AT

FAIRMOUNT, INDIANA,
AUGUST 16-21, 1921.

PRICE, FIFTEEN CENTS.

The Indiana Conference

OFFICERS OF THE CONFERENCE.

President—W. L. Thompson, Marion, Indiana.
Vice-President—F. R. Eddy, Fairmount, Indiana.
Secretary—E. J. Pitts, Plymouth, Indiana.
Assistant Secretary—C. L. Enyeart, Peru, Indiana.
Treasurer—Josiah E. Smiley, Fairmount, Indiana.

CONFERENCE EVANGELISTS.

W. L. Thompson, Conference President and Missionary Secretary.
C. S. Smith, Church Extension and Tithing Secretary.
F. R. Eddy, Conference Sunday School Secretary.

BOARD OF TRUSTEES.

Ministerial—Jacob Hester, 3 years; Walter L. Thompson, 1 year; Hebert T. Arnold, 1 year; Schuyler C. Kinnison, 2 years; Francis R. Eddy, 2 years.
Laymen—John L. Rigsbee, 3 years; George W. Felton, 3 years; Jasper Hester, 1 year; Francis M. Foulke, 2 years.

DIRECTORS OF THE CAMP MEETING ASSOCIATION.

S. C. Kinnison, H. T. Hawkins, H. T. Arnold, C. S. Smith, John L. Rigsbee, George W. Felton and D. L. Shideler.

CAMP GROUND SUPERINTENDENT.

L. H. Carter, Fairmount, Indiana.

ADVISORY BOARD.

C. S. Smith, J. L. Rigsbee.

THE INDIANA CONFERENCE

STANDING COMMITTEES.

Judicial Committee—J. O. Baker, L. L. Folger, J. Hester.

Committee on Vacancies—J. O. Baker, H. C. Bedford, C. A. Billheimer, W. F. Shelley.

Itineracy and Elders' Orders—H. T. Hawkins, 3 years; E. J. Pitts, 2 years; S. C. Kinnison, 1 year; W. L. Thompson, 1 year; F. R. Eddy, 4 years.

Camp Meeting Committee—H. T. Arnold, 3 years; S. C. Kinnison, 2 years; C. A. Billheimer.

Statistical Committee—O. G. McKinley, C. N. Porter.

Auditing Committee—D. C. Dooley, E. L. Glover.

Conference Registrar—C. G. Payne.

Conference Sunday School Board—H. T. Hawkins, F. R. Eddy, H. T. Arnold.

WESLEYAN METHODIST CONNECTION

CONFERENCE ROLL.

Elders.

Akright, H.	Sodus, Mich.
Akright, Josephine	Sodus, Mich.
Arnold, H. T.	Mt. Etna, Ind.
Baker, J. O.	Marion, Ind., Marion College, Phone 2117.
Baker, T. P.	Sheridan, Ind.
Baker, W. D.	New Castle, Ind., 146 S. 8th St., Phone 1380.
Bedford, H. C.	Marion, Ind., Marion College.
Bedford, S.	Marion, Ind., Marion College.
Blake, A. L.	Indianapolis, Ind., R. R. 1, Box 23.
Bogue, W. G.	Peru, Ind., R. R. No. 11.
Bodenhorn, T. M.	Lafayette, Ind., R. R.
Brown, H. C.	Fairmount, Ind.
Brown, H. G.	Warren, Ind.
Billheimer, C. A.	Marion, Ind., 3717 Race St., Phone 3166 W.
Carter, L. H.	Fairmount, Ind.
Caldwell, Setta	Warsaw, Ind., 501 W. Jefferson St.
Coleman, J. J.	Fairmount, Ind.
Crim, E. A.	Greentown, Ind.
Cory, E. E.	Marion, Ind., 1419 Euclid Ave., Phone 3585 W.
Davis, E. A.	Kokomo, Ind., 1605 S. Buckeye St.
DeWeerd, Fred	Fairmount, Ind., Phone 118.
DeWeerd, Lelia	Fairmount, Ind.
Decker, Carmen	Elwood, Ind., 1612 N. B. St.
Dooley, D. C.	Sheridan, Ind.
Downing, David	Bryant, Ind.
Eddy, F. R.	Fairmount, Ind., Phone 384.
Eddy, B. I.	Sierra Leone, West Africa.
Eddy, Dollie R.	Sierra Leone, West Africa.
Enyeart, C. L.	Peru, Ind., West 13th St.
Fooshee, A. P.	Laketon, Ind.
Figg, S. C.	Louisville, Ky.
Folger, L. L.	Fairmount, Ind.
Folger, Anna K.	Fairmount, Ind.
Greene, Mary	Pardi, India.
Hawkins, H. T.	Larwill, Ind.
Hawkins, S. D.	Lewis Creek, Ind.
Hester, J.	Arlington, Ind.
Hopkins, W. H.	Kokomo, Ind., 1034 S. Armstrong St., Phone 2059-Y.

THE INDIANA CONFERENCE

CONFERENCE ROLL—Continued.

Jennings, Walter	Sierra Leone, West Africa.
Jennings, Miriam	Sierra Leone, West Africa.
Kinnison, S. C.	Marion, Ind., 314 West 38th St.
Linville, Anna	Marion, Ind., 515 East 3rd St.
Louks, Belle McClure	Elwood, Ind., 2701 E. Main St., Phone 508-L 2.
Mow, S. A.	Elwood, Ind., 2706 N. C. St., Phone 1043-L 1.
Morris, Walter	Pardi, India.
Morris, Vura	Pardi, India.
Moore, M. M.	New Castle, Ind.
McKinley, O. G.	Huntington, Ind., 1138 Ogan St.
McMichael, W. W.	Bryant, Ind.
Mitchell, L. R.	Marion, Ind.
Murphy, A. U.	Kirklin, Ind.
Murphy, Lydia	Kirklin, Ind.
Noggle, W. W.	Andrews, Ind.
Pierce, T. J.	Fairmount, Ind.
Payne, C. G.	Payne, Ohio.
Payne, G. H.	Fairmount, Ind.
Porter, C. N.	South Bend, Ind., 1407 S. Rush St.
Pitts, E. J.	Plymouth, Ind.
Smith, C. S.	Fairmount, Ind., Red 156-1.
Sears, M. V.	Fairmount, Ind.
Spitler, F. O.	Wabash, Ind., 756 Manchester Ave., Phone 538 White.
Smith, Lucinda	Kirklin, Ind.
Schooley, E. A.	Indianapolis, Ind., 611 North New Jersey St.
Shue, J. W.	Lebanon, Ind.
Thompson, W. L.	Marion, Ind., 3714 S. Race St.
Whitcotton, Jesse	Louisville, Ky.
Wise, R. D.	Albion, Ind.
Worth, E. E.	Marion, Ind., 4002 S. Washington St.
Zike, G. W.	Fairmount, Ind.

Superannuated List.

Bailey, W. M.	New Castle, Ind.
Fisher, R. L.	Fountain City., Ind.
Shutters, J. F.	Miami, Ind.
Teter, E.	Sheridan, Ind.
Worth, A.	Fountain City, Ind.

WESLEYAN METHODIST CONNECTION

CONFERENCE ROLL—Continued.

Supernumerary List.

Brown, J. W.	Rayburn, Texas.
Shatford, L.	Plymouth, Ind.

Elders on Probation.

Brown, G. W.	Elkhart, Ind.
Appleman, Glenn	Albion, Ind.
Simmons, Philip	Sheridan, Ind.

Unstationed List.

Carter, R. A.	Montpelier, Ind.
---------------	------------------

Licentiates on the Stationed List.

Barr, Alva	North Liberty, Ind.
Billheimer, Paul	Marion, Ind., 3727 S. Nebraska St.
Croy, J. W.	Hartford City, Ind.
Coates, Carlos	Marion, Ind., 4007 S. Washington St.
Dayton, A. B.	Bluffton, Ind., 917 S. Mulberry St.
Drake, J. W.	Hamlet, Ind.
Drake, W. H.	Kokomo, Ind., R. R. No. 8.
Drake, Ruth	Kokomo, Ind., R. R. No. 8.
Fields, C. C.	Greensboro, Ind.
Glover, E. L.	Carthage, Ind.
Hamma, Henry	Fowler, Ind.
Harrington, Everett	Louisville, Ky.
Howard, Dempsey	Louisville, Ky.
Harmon, C. W.	Westfield, Ind.
Hunter, Eugene	Lewis Creek, Ind.
Hodge, Paul	Sheridan, Ind.
Howell, L. T.	Salem, Ind., 201 S. Mill St.
Hutchins, Carrie	Sheridan, Ind.
Jackson, Amos	Miami, Ind.
Jackson, Verna	Miami, Ind.
Johnson, Robert	Indianapolis, Ind., 831 Lexington Ave.

THE INDIANA CONFERENCE

CONFERENCE ROLL—Continued.

Kercheval, H. W.	Bryant, Ind.
Lee, Albert	Alexandria, Ind.
Mills, Everett	Summitville, Ind.
Mitchell, Eva	Marion, Ind.
Morris, W. R.	Anderson, Ind.
Ott, W. C.	Shelbyville, Ind.
Payne, Emma	Lapel, Ind.
Petry, Lee	New Castle, Ind., R. F. D. No. 7.
Petry, Bessie	New Castle, Ind., R. F. D. No. 7.
Pitts, Flora	Surat District, Pardi, India.
Pitcher, Andrew	Lewis Creek, Ind.
Ricker, Dallas	Thorntown, Ind.
Smeltzer, R. A.	Marion, Ind.
Smeltzer, Edna	Marion, Ind.
Smithie, Eddie	Waveland, Ind.

RECORD OF ATTENDANCE.

Elders.

	T	W	T	F	S
H. Akright	2	2	2	2	2
Josephine Akright	2	2	2	2	2
H. T. Arnold	2	2	2	2	2
J. O. Baker	1	1	1	1	1
T. P. Baker					
W. D. Baker	2	2	1	1	1
W. M. Bailey					
H. C. Bedford	1	2	1	1	1
S. Bedford					
A. L. Blake	2	2	2	2	2
W. G. Bogue	1	2	2	2	2
T. M. Bodenhorn	2	1	2	2	2
H. C. Brown	2	2	2	2	2
H. G. Brown	2	2	2	2	2
C. A. Billheimer	2	2	2	2	2
L. H. Carter	2	2	2	2	2

WESLEYAN METHODIST CONNECTION

RECORD OF ATTENDANCE—Continued.

	T	W	T	F	S
Setta Caldwell	2	1	2	2	2
J. J. Coleman					1
E. A. Crim	2	2	1		
E. E. Cory	1	1	1		2
E. A. Davis	2	2	2		
Fred DeWeerd		2	2	1	
Lelia DeWeerd		1	2	1	1
Carmen Decker	2	2	2	2	2
D. C. Dooley	2	2	2	1	2
David Downing		2	2	1	
F. R. Eddy	2	2	2	2	2
B. I. Eddy					
Dollie R. Eddy					
C. L. Enyeart	2	2	2	2	2
A. P. Fooshee	2	2	2	1	1
S. C. Figg		2	2		
L. L. Folger	2	2	2	2	2
Anna K. Folger	2	2	2	2	2
Mary Greene					
H. T. Hawkins	2	2	2	2	2
S. D. Hawkins					
J. Hester	1	1	1	2	2
W. H. Hopkins	2	1	2	2	2
Walter Jennings	1	2	2	1	1
Miriam Jennings	1	2	2	2	1
S. C. Kinnison	2	2	2	2	2
Anna Linville					1
Belle McClure Louks	2	2	2	2	2
S. A. Mow					
Walter Morris					
Vura Morris					
M. M. Moore	2	2	2	1	1
O. G. McKinley	2	2	2	2	1
W. W. McMichael	2	2	2		
L. R. Mitchell	2	2	2	2	1
A. U. Murphy	2	2	2	2	2
Lydia Murphy	2	2	2	2	2
W. W. Noggle	2				

THE INDIANA CONFERENCE

RECORD OF ATTENDANCE—Continued.

	T	W	T	F	S
T. J. Pierce	1				
C. G. Payne	2	2	2	2	2
G. H. Payne	2	2	2	2	2
C. N. Porter	2	2	2	1	2
E. J. Pitts	2	2	2	2	2
C. S. Smith	2	2	2	2	2
M. V. Sears	2	2	2	2	2
F. O. Spitler	2	2	2	2	2
Lucinda Smith	2	2	2	2	2
E. A. Schooley	1				
J. W. Shue	1	2	2	2	1
W. L. Thompson	2	2	2	2	2
Jesse Whitecotton					
R. D. Wise	2	1	1		2
E. E. Worth		1		1	2
G. W. Zike	2	2	1	1	2

Superannuated List.

	T	W	T	F	S
R. L. Fisher					
E. Teter					
A. Worth	1	1	1		1
J. F. Shutters					

Supernumerary List.

	T	W	T	F	S
J. W. Brown					
L. Shatford					

Elders on Probation.

	T	W	T	F	S
G. W. Brown					
W. Z. Horbury					

Unstationed List.

	T	W	T	F	S
R. A. Carter					

WESLEYAN METHODIST CONNECTION

RECORD OF ATTENDANCE—Continued.

Licentiates on the Stationed List.

	T	W	T	F	S
Alva Barr		2	2	2	2
Francis Berkebile			1		
Paul Billheimer		1	1	2	1
Jesse Cassidy					
Edna Smeltzer	2	2	1	1	2
Carlos Coates	1	1	2	1	
J. W. Croy				2	2
A. B. Dayton	2	2	2	2	2
J. W. Drake	2	2	2	2	1
W. H. Drake	2	2	2	2	2
Ruth Drake	2	2	1	2	2
C. C. Fields	2	2	2	2	2
E. L. Glover	2	2	2	2	2
Henry Hamma	2	2	2	2	2
Everett Herrington					
Charles Harmon	2	1	1	2	2
Dempsey Howard		2	1		
Eugene Hunter	2	2	2	2	2
Robert Johnson	2	2		2	2
H. W. Kercheval		2	2	1	1
Albert Lee					
Everett Mills	1	2	2	1	
Eva Mitchell					
W. R. Morris		1	2	1	
W. C. Ott		2	2	2	1
Emma Payne	1	2	2	2	2
Lee Petry	2	2		1	1
Bessie Petry	1	2	2	2	1
Flora Pitts					
Lewis Pratt					
Dallas Ricker	2	2	2	2	2
Earl Renner	1	2	2	2	1

DELEGATES.

	T	W	T	F	S
J. L. Wright	2	2	2		1
J. L. Rigsbee	2	2	2	2	2

THE INDIANA CONFERENCE

	T	W	T	F	S
Mary McDowell	2		1	1	
Marion Ellingwood	1	2	2	2	1
Lyda Worth	1		1	2	1
Alice Dayton	2	2	2	2	1
George Wickersham	2	1	2	2	2
Enos Bakehorn	2	2	2		
Elsie M. Dawson	2	2	2	2	1
Sarah Stagg	2	2	2	2	2
Nellie McClintoc	2	2	2	2	2
Mossaline Crilly	2	1	2	2	2
Horace Williams	2	2	2	2	
J. W. Rager	2	2	2	2	2
D. L. Shideler	2	2	2	2	2
Thomas Dyson	2	2	2	2	2
Ina Kimball	2	2	2	2	2
Clyde Meredith	2	2	2	2	
Irvin Smith	2	2	1	2	2
Dema Mount	2	2	2	2	1
Clayton Sears	2	2			
Lowell Euble	2	2	2	2	2
W. F. Shelley	2	1	2	2	
Belle Shelley	1	1	2	2	1
Minnie Flagg	2	2	2	2	2
Edward Norman	2	2	2		
Edna Baker	2	2	2	2	2
J. W. Brown	2	2	2	2	2
Ada Clark	2	1	2	2	2
Lillian White	1	1	1	2	2
Carrie Rosselle	2	2	1	2	2
Charles Frank	1	2			
E. M. Rich	1	2	1	1	
Lizzie Shambaugh	1	2	2	1	2
Minnie Stuart	1				
Della Whicker	1	2	1	2	1
Maranda Fenstermaker	1	2	2	2	2
Bessie Baker	1	2	1	2	2
Alice Couch	1	2	2	1	2
Anna Pike	1	2	2	1	2
Eva Cook	1	2	2	2	2
Ocie Harrison	1	2	2	2	2
L. T. Howell	1	2	2	2	2

WESLEYAN METHODIST CONNECTION

DELEGATES—Continued.

	T	W	T	F	S
Emma Edwards	1	2	2	1	2
Edward Larue	1			1	
Dila Wilkinson	1	2	2	2	2
Jennie Trader	1	2	2	2	2
Laura Smith	1	1	2	2	2
Etta Addington		2	2		
E. McMichael		2	2	1	
Zella Archer		2			
Maggie Roberts		2	1	2	2
E. F. Pletcher		2			
Amos Zook		2		2	1
Belle Forte		2	2	2	2
Alice Addleman		2	2	2	2
Elizabeth Marine		2	2	2	2
Ennis Kitterman		2	2		1
Bertha Schrader		2	2	1	
Blanche Blake		2	1	2	
W. R. Compton		2	1		
Geneva Baker		2	1	1	
Donald Babb		2	1	1	
Sadie Betz		2	2	2	2
Ode Kierstead		2			
Oma Fisher		1	2	2	2
Robert Walsh		1			
Carrie Hutchins		1	2	2	2
Ola Vendler		1	2	1	1
Matilda Miller		1	2	2	2
Florence Heal		1	2	2	2
Flora Fowler		1			
Clyde Freelin			2	1	
Frank Kilgore			2		
William Percy			1	2	
Elsie Stanley			1	2	
Nettie Smith			1	2	
Hurvey Smith			1	2	
C. E. Wicker			2	2	1
Laura Huggins				1	

ROLL OF HONORED DEAD.

Emsley Brookshire.
Charles Clemans.
William Stewart.
H. Griggs.
M. R. Armstrong.
Seeley Bloomer.
Hiram Jackson.
George Richey.
M. D. Anderson.
Enoch March.
James O'Neal.
John A. Preston.
Sannford Bassett.
Joseph Simpson.
J. Burke.
Jabez Neal.
S. Robinson.
Joseph Bennett.
Warren Taylor.
J. W. Barnes.
J. W. Elsbury.
J. W. Carl.
Jabez Sibley.
Owen Williams.

Wade Roberts.
J. Williams.
Isaac Meeks.
William Scott.
Francis Root.
John A. Moorman.
Adam Hetzler.
John Harrison.
George Geynolds.
D. R. Brown.
Zephinia Bell.
W. Griffith.
Samuel Kennedy.
J. W. Hiatt.
James Lytle.
Alfred Hiatt.
James Mulby.
E. Mason.
G. W. Simmons.
W. C. Mullenis.
Elza Lank.
Joseph Bell.
William Tharp.
Eber Teter, Sr.

ROLL OF HONORED DEAD—Continued.

A. Tharp, 1849.	John Bond, 1853.
Jonathan Shaw, 1853.	A. G. Jones, 1856.
Alexander Heywood, 1856.	S. E. Pfaff, 1857.
James Paxton, 1859.	J. L. Pfaff, 1859.
James McGraw, 1860.	W. M. Glading, 1862.
J. B. Strawbridge, 1863.	Daniel Worth, 1863.
W. P. Searing, 1867.	Louis Pettijohn, 1868.
Jotham Wright, 1869.	Calvin Wilson, 1870.
W. S. Bradford, 1877.	S. Reeves, 1879.
James Smith, 1880.	John Robinson, 1881.
Austin Fuller, 1883.	H. C. West, 1886.
Wm. Bennett, 1886.	C. Woodruff, 1887.
E. Coats, 1887.	Wm. Paxton, 1888.
W. M. Welsh, 1891.	H. B. McCain, 1893.
G. B. Rogers, 1894.	W. M. Lacey, 1894.
H. Beber, 1898.	Mary Travis, 1899.
C. F. Wiggins, 1899.	John L. Fall, 1900.
W. L. Fall, 1901.	Wm. Bartholomew, 1904.
Robert H. Jeffrey, 1905.	James Matheney, 1906.
Sarah Kennedy, 1908.	Lee W. McClure, 1908.
Emma Swisher, 1909.	John Manning, 1910.
J. B. Shadle, 1910.	D. F. Gordon, 1910.
J. P. Baker, 1912.	Miles Moore, 1912.
W. L. Payne, 1912.	William Talbert, 1913.
G. W. Smith, 1914.	Joseph Tague, 1915.
W. H. Kennedy, 1916.	George Reber, 1918.
Warren Younts, 1920.	B. L. Couch, 1921.
Stella McClure.	

Journal of Daily Proceedings.

Fairmount, Ind., Aug. 17, 1921.

The seventy-third session of the Indiana Annual Conference convened in the auditorium on the Camp Ground, at Fairmount, Indiana, at 8:00 P. M., August 15th. The opening sermon, preached by Dr. H. C. Bedford, brought clearly to our minds our need and also the source of supply.

The first business meeting met at 8:30 A. M. Tuesday morning. The devotions were conducted by Elders W. W. McMichael, J. Hester and F. R. Eddy.

The roll of Elders and Licentiates was called and 50 Elders and 16 Licentiates answered to their names.

The following named persons presented proper credentials and were enrolled as delegates:

J. L. Wright, J. L. Rigsbee, Mary McDowell, Marion Ellingwood, Lida Worth, Alice Dayton, George Wickersham, Enos Bakehorn, Elsie M. Dawson, Sarah Stagg, Nellie McClintoc, Mossaline Crilly, Horace Williams, G. W. Rager, D. L. Shideler, Thomas Dyson, Ina Kimball, Clyde Merideth, Irvin Smith, Dema Mount, Clayton Sears, Lowell Euble, W. F. Shelley, Belle Shelley, Minnie Flagg, Edward Norman, Edna Baker, John W. Brown, Ada Clark, Lillian White, Carrie Rosselle.

The Conference was then declared open for business.

The President then read his annual address, which was full of encouragement and help. The following recommendation was contained in the address: I recommend that the Committee on Finance also be authorized to act as a Committee on Appropriations and be called the Committee on Finance and Appropriations.

The President then read his official report, which upon motion was adopted by the Conference. See Report No. 1.

The Conference bar was fixed as the first four seats on either side and in front, including the rostrum.

Upon motion the Conference fixed the time to convene at 8:30 A. M. and 2:00 P. M., and to adjourn at 12:00 M. and upon motion in the evening.

H. T. Hawkins and Robert Johnson were constituted a Committee on Courtesies.

The Committee on Resolutions was filled by the election of S. C. Kinnison, T. M. Bodenhorn and Marion Ellingwood

WESLEYAN METHODIST CONNECTION

Upon motion C. A. Billheimer, F. R. Eddy, R. D. Wise, D. L. Sheidler, and J. L. Rigsbee were elected to the Committee on Finance and Appropriations.

The following named persons were constituted a Committee on Ministerial Character: W. L. Thompson, Chairman ex-officio, H. C. Brown, G. H. Payne, John W. Brown and Horace Williams.

The Committee on Pastoral Relations was filled by the election of Chairman ex-officio W. L. Thompson, C. S. Smith, S. C. Kinnison, W. D. Baker, Edna Baker, C. M. Crilly and Thomas Dyson.

Upon motion J. O. Baker, H. C. Bedford, C. A. Billheimer, W. F. Shelley and Marion Ellingwood were elected a Committee on Vacancies.

A motion prevailed that W. L. Thompson be elected to fill the vacancy in the Committee on Elders' Orders to succeed himself.

The Auditing Committee was elected as follows: D. C. Dooley and E. L. Glover.

J. O. Baker, L. L. Folger, J. Hester and C. S. Smith were elected a Judicial Committee.

C. G. Payne was elected Registrar of the Conference.

Upon motion H. T. Arnold was chosen a member of the Camp Meeting Committee.

The Statistical Committee was constituted by the election of C. N. Porter and O. G. McKinley.

Upon motion the question of financing and supplying quarterly meeting service for the year was referred to the Finance Committee for special attention.

Upon motion the Secretary was instructed to convey the greetings of the Conference to J. W. Brown.

A motion prevailed that the name of Lewis Burns be stricken from the roll of Elders.

Adjournment. Benediction, F. R. Eddy.

Afternoon Meeting, 2:00 P. M.

The devotions were conducted by C. L. Enyeart.

The roll was called and the minutes were read and approved.

The following named persons presented proper credentials and were enrolled as delegates:

Charles Frank, E. M. Rich, Lizzie Shambaugh, Minnie Stuart, Della Whicker, Maranda Fenstermaker, Bessie Baker, Alice Couch, Anna Pike, Eva Cook, Osie Harrison, L. T. Howell, Emma Edwards, Ed Larue, Dila Wilkinson, Jennie Trader and Laura Smith.

THE INDIANA CONFERENCE

Rev. Glenn Appleman and Rev. Paul Hodge were introduced to the Conference and accorded honorary privileges.

Recommendations to be received to study preparatory to travel were received for the following named persons: Willie Fields, A. F. Kline, Idelta Pickett and Paul Hodge and as per order were passed to the Committee on Elders' Orders.

A letter of recommendation for C. H. Coats was received from the President of the North Michigan Conference and as per order was passed to the Committee on Elders' Orders.

A communication from Mary Greene was read and upon motion the Secretary was instructed to convey to her the greetings of the Conference.

Rev. A. F. Kline and Rev. J. W. Shue were introduced to the Conference.

The Committee on Finance and Appropriation read a partial report. See Report No. 2.

The regular order was called and the following named persons were examined and their characters passed:

W. L. Thompson, F. R. Eddy, C. S. Smith, E. J. Pitts, T. M. Bodenhorn, H. C. Brown, J. O. Baker, W. H. Hopkins, G. W. Zike, R. D. Wise, A. L. Blake, Walter Jennings, Miriam Jennings, A. P. Fooshee, E. A. Crim, M. M. Moore, C. A. Billheimer, Belle Louks, H. C. Bedford and S. A. Mow.

Upon motion the Conference adjourned.

Benediction, H. C. Bedford.

Third Meeting, Wednesday, 8:30 A. M.

Devotions were conducted by H. and Josephine Akright.

The roll was called and the minutes were read and approved.

The following named persons presented proper credentials and were enrolled as delegates:

Zella Archer, Maggie Roberts, E. F. Pletcher, Amos Zook, Bell Forte, Alice Addleman, Elizabeth Marine, Ennis Kitterman, Bertha Schrader, Blanche Blake, W. R. Compton, Geneva Baker, Donald Babb, Sadie Betz, Ode Kierstead.

Rev. F. A. Butterfield and Rev. Philip Simmons were introduced to the Conference, and upon motion were accorded honorary privileges.

Recommendations to be received to study preparatory to travel were received for L. C. Tendell, George Pense, L. T. Howell and

WESLEYAN METHODIST CONNECTION

C. D. Crabill and as per order were passed to the Committee on Elders' Orders.

A recommendation that Rev. Philip Simmons be received into this body as an elder was received from the Boxley charge, and was passed to the Committee on Elders' Orders.

Rev. John Smeltzer was introduced to the Conference and upon motion was accorded honorary privileges.

A communication from Flora Pitts was received and upon motion the Secretary was instructed to convey to her the greetings of the body.

The Committee on Finance and Appropriations gave the second reading of a partial report. See Report No. 2.

A motion prevailed that the report of the Finance Committee be advanced to the third reading.

Moved and carried that the partial report be adopted.

Rev. F. R. Eddy was elected to fill the vacancy in the Committee on Elders' Orders made by the releasing of W. L. Thompson.

The regular order was called and the following names were called and their characters passed:

W. D. Baker, T. P. Baker, Bessie Petry, Lee Petry, W. G. Bogue, H. G. Brown, C. G. Payne, Robert Johnson, F. O. Spitler, Earl Renner, C. C. Fields, E. L. Glover, H. Akright, Josephine Akright.

The Conference adjourned by motion.

Benediction, A. L. Blake.

Afternoon Meeting, 2:00 P. M.

Devotions were conducted by A. U. and Lydia Murphy.

The roll was called and the minutes were read and approved.

The following named persons presented proper credentials and were enrolled as delegates: Oma Fisher, Robert Walsh, Carrie Hutchins, Ola Vender, Matilda Miller, Florence Heal, Flora Fowler.

Upon motion the Conference set aside Friday next as fast day, at least the noon hour.

Communications were received from E. A. Schooley, S. Bedford and S. A. Mow, and upon motion the Secretary was instructed to convey to these persons the greetings of the body.

S. C. Kinnison tendered his resignation from the Committee on Resolutions, and a motion prevailed that G. H. Payne be elected to fill the vacancy.

THE INDIANA CONFERENCE

Rev. O. S. Warner of the Wisconsin Conference and Rev. J. J. Coleman were introduced to the Conference and upon motion were accorded honorary seats within the bar.

The special order was called and the Conference proceeded to the election of Conference officials. S. C. Kinnison, E. E. Cory, C. G. Payne, D. C. Dooley, T. M. Bodenhorn and R. F. Johnson were appointed tellers.

Upon ballot W. L. Thompson receiving a majority of all votes cast for President was declared elected.

The Conference then proceeded to ballot for Vice-President, which resulted in F. R. Eddy receiving a majority of all votes cast and he was declared elected.

A motion prevailed that the Assistant Secretary be instructed to cast the ballot of the Conference for E. J. Pitts for Secretary. This was done and he was declared elected.

The Secretary nominated and upon motion the Conference elected C. L. Enyeart Assistant Secretary.

Upon motion the Secretary was instructed to cast the ballot of the Conference for J. E. Smiley for Conference Treasurer. This was done and he was declared elected.

The Conference then proceeded to the election of Second Evangelist, Church Extension and Tithing Secretary. C. S. Smith was placed in nomination and receiving a majority of all votes cast was declared elected.

Upon ballot F. R. Eddy receiving a majority of all the votes cast was declared elected to the office of Third Evangelist and Conference Sunday School Secretary.

During the canvass of the several ballots the regular order was taken up and the following names were called and their characters were passed:

E. J. Mills, H. W. Kercheval, W. M. Bailey, B. I. Eddy, Dollie R. Eddy, Mary Greene, S. D. Hawkins, Walter Morris, Vura Morris, R. L. Fisher, E. Teter, A. Worth, J. W. Brown, Anna Linville, G. G. McKinley, L. Shatford, R. A. Carter, Flora Pitts, Jesse Whitecotton and S. C. Kinnison.

Upon motion the Secretary was instructed to cast the ballot of the Conference for Jacob Hester as member of the Board of Trustees of the Conference to succeed himself.

A motion prevailed that the Secretary be instructed to cast the ballot for the body for John L. Rigsbee to succeed himself as member of the Conference Board of Trustees.

WESLEYAN METHODIST CONNECTION

George W. Felton was elected by unanimous ballot to succeed himself as member of the Conference Board of Trustees.

A motion prevailed that in case the statistical report from Miami is not in the hands of the Committee in due time, that the Committee be authorized to incorporate in their report the membership report of last year and leave the remainder a blank.

Upon motion the Conference adjourned.

Benediction, A. B. Dayton.

Fifth Meeting, Thursday, 8:30 A. M.

Devotions were conducted by A. P. Fooshee.

The roll was called and the minutes were read and approved.

Proper credentials were received for Clyde Freelin and Frank Kilgore and they were enrolled as delegates.

Rev. John W. Hudelson was introduced to the Conference and upon motion was accorded honorary privileges and a seat within the bar.

The President nominated C. S. Smith and J. L. Rigsbee as his Advisory Board and upon motion they were elected.

A recommendation to be received to study preparatory to travel was received for Carrie Hutchins and as per order was passed to the Committee on Elders' Orders.

The Committee on Finance and Appropriation gave the first reading of a further partial report. See Report No. 2.

The regular order was called and the following names were called and their characters passed:

Anna K. Folger, L. R. Mitchell, E. E. Cory, Edna Smeltzer, Dallas Ricker, Charles Harmon, W. H. Drake, Ruth Drake, W. W. Noggle, C. H. Coates, C. N. Porter, J. Hester, F. L. Berkebile, H. T. Arnold, W. C. Ott, Henry Hamma, C. L. Enyeart, S. Bedford, H. T. Hawkins, L. H. Carter, W. W. McMichael, Emma Payne, D. C. Dooley, Eugene Hunter, E. A. Davis, C. C. Decker.

The special order was called and the Conference Sunday School Secretary gave his report. A motion prevailed that the report be adopted. See Report No. 3.

The Conference Sunday School Board gave its report. Upon motion the report was adopted. See Report No. 4.

Upon motion F. R. Eddy, H. T. Arnold and H. T. Hawkins were elected Conference Board.

Adjournment by limitation. Benediction by T. M. Bodenhorn.

THE INDIANA CONFERENCE

Afternoon Meeting, 2:00 P. M.

Devotions were conducted by W. H. Drake and C. C. Fields.

The roll was called and the minutes were read and approved.

The following named persons presented proper credentials and were enrolled as delegates:

William Percy, Elsie Stanley, Nettie Smith, Hurvey Smith, C. E. Wicker.

It was moved and supported that at the close of the hour taken by our Connectional Representative, that Rev. John W. Hudelson be given twenty minutes to speak to the Conference.

C. S. Smith tendered his resignation as member of the Committee on Memorials. Upon motion the same was adopted and J. Hester was elected to fill the vacancy.

A letter of membership was received from Friends Church of Jonesboro for Rev. Glenn Appleman. The same was passed to the Committee on Elders' Orders.

The Committee on Finance and Appropriation gave a second reading of the partial report. See Report No. 2.

The special order was called and Rev. F. A. Butterfield, Connectional Representative, presented the Connectional interests in an able and interesting way. Special attention was given to our Missionary, Educational and Publishing interests.

Upon motion the Conference expressed its appreciation for the work of our Connectional Editor and pledged its support to our Connectional interests.

The order of the day was called and Rev. Hudelson presented in a definite way the work of the No-Tobacco League.

Adjournment by motion. Benediction, Rev. Hudelson.

Friday, 8:30 A. M.

Devotions were conducted by Lee and Bessie Petry.

The minutes were read and approved as corrected.

Upon motion Rev. Fred DeWeerd was elected Conference and Camp Meeting Reporter.

A certificate of membership in this body was presented for Laura Huggins and her name was enrolled as a delegate.

Recommendations to be received to study preparatory to travel were received for the following persons:

Charles Simms, George Cole, Mabel Hinds, Hurvey L. Smith, and as per order were passed to the Committee on Elders' Orders.

WESLEYAN METHODIST CONNECTION

A communication was received from E. Teter. Upon motion the Secretary was instructed to send him the greetings of the Conference and an expression of appreciation due him as our leader.

Upon motion the Secretary was asked to convey to S. D. Hawkins the greetings of this body.

The Committee on Pastoral Relations gave the first reading of a partial report. See Report No. 5.

The order of the day was called and the following names were called and their characters passed:

Alva Barr, W. R. Morris, David Downing, Setta Caldwell, S. C. Figg, L. L. Folger, A. U. Murphy, Lydia Murphy, Fred DeWeerd, Lelia DeWeerd, T. J. Pierce, G. H. Payne, M. V. Sears, Lucinda Smith, E. A. Schooley, J. F. Shuttters, G. W. Brown, W. Z. Horbury, Paul Billheimer, Jesse Cassidy, J. W. Croy, A. B. Dayton, J. W. Drake, Everett Herrington, Dempsey Howard, Albert Lee, Eva Mitchell, Flora Pitts, Lewis Pratt and Mollie Pratt.

A motion prevailed that whereas, during the year stations and charges may desire to sell property that now is held in trust for them by the Conference and buy other properties; and, whereas, it is possible that some churches may disband and it become desirable to sell property that formerly belonged to them, but which becomes Conference property by said disbanding; therefore, be it resolved, That the Indiana Conference of the Wesleyan Methodist Connection or Church of America, incorporate, now in session, hereby authorizes the Trustees of said Conference to look after all such properties and to sell the same and to make deeds for the same, and that their executive officers be empowered to execute the same, and we hereby instruct the Secretary when recording this order to leave a space for recording the names of the properties sold, following the words, "The Indiana Conference of the Wesleyan Methodist Connection or Church of America, Incorporate, has ordered the following properties sold."

W. I. Thompson, President,
E. J. Pitts, Secretary.

An appeal was made for Anderson Mission work and an offering of \$116.83 was taken for that work.

Adjournment on motion. Benediction, Robert Johnson.

The hour 12:00 M., set apart for fasting and prayer, was observed, and special prayer was made for the Camp, our schools and other arms of the work. Our Connectional Editor was particularly remembered and a love offering of \$58.57 was given to him.

THE INDIANA CONFERENCE

Afternoon Meeting, 2:00 P. M.

Devotions were conducted by J. Hester.

The roll was called and the minutes were read and approved.

The special order was called and Dr. Bedford, President of Marion College, took charge of the exercises. The history of the past year, the outlook for the future and the general interests of Marion College were ably presented by Dr. Bedford and his faculty.

The following resolution to be presented to the Wesleyan Educational Society was offered and upon motion was passed:

Whereas, the Indiana Conference through its representatives has been assured that a school of college grade would be established within its bounds by the Wesleyan Educational Society if the Conference would raise not less than \$100,000 as endowment, bearing interest at five per cent, and secure suitable site and erect the necessary building; and whereas, various prominent members of the Wesleyan Educational Society gave out the impression to the brethren of the Indiana Conference that the proposed school would be the senior college of the connection; and whereas, it is evident to all thoughtful minds that our denomination cannot successfully support more than one standard college; therefore, we respectfully petition the Wesleyan Educational Society at its next annual meeting to formulate a definite policy regarding the control and management of our educational institutions, and that this policy provide that Marion College shall be recognized as the standard, four-year college of the Wesleyan Methodist Connection; that the remaining institutions be chartered, recognized junior colleges; that the first interest of the Educational Society shall be the putting of these junior colleges on a sound footing, by raising \$100,000 productive endowment for each in the territory of each school; that when Houghton Seminary and Miltonvale Wesleyan College shall each have \$100,000 of productive endowment, the educational budgets of all the schools be combined in one general educational budget and that the levy be made uniform over the whole Church.

An offering of \$514.00 in cash and subscriptions was taken for repair work in the dormitory at Marion College.

The Statistical Committee read its report. Upon motion the said report was adopted. See Report No. 11.

Adjournment upon motion.

WESLEYAN METHODIST CONNECTION

Special Order, 7:30 P. M.

The public meeting of the W. H. & F. M. Society was held under the direction of the President, Auvie Northam. The financial reports of both the W. H. & F. M. S. and the Y. M. W. B. showed a marked increase in contributions for the year, aggregating, respectfully, \$3,564.90 and \$3,834.18. A very interesting program was rendered. An offering of \$653.00 was taken to purchase the necessary articles for our out-going missionaries, C. C. Decker and wife. Our returned missionaries, Rev. and Mrs. Walter Jennings, were present and spoke briefly.

Benediction, W. L. Thompson.

Saturday, 8:30 A. M.

Devotions were conducted by H. G. Brown.

The roll was called and the minutes were read and approved.

Rev. John Clement of the North Carolina Conference, and Rev. Hill of the Church of God were introduced to the Conference and upon motion were accorded honorary privileges in this body.

A communication from Albert Lee was read.

A certificate of standing from the South Carolina Conference for J. J. Coleman, and a motion prevailed that his name be added to the roll of Elders.

The Committee on Resolutions read its report. Upon motion the report was adopted. See Report No. 6.

The Auditing Committee gave report which by motion was adopted. See Report No. 7.

The yearly report of the Conference Treasurer was read and upon motion was adopted. See Report No. 8.

A motion prevailed that the over-plus in the cash account of the Treasurer be placed in the Educational Fund.

The Committee on Elder's Orders gave a partial report. See Report No. 9.

The Committee on Pastoral Relations made the second reading of its report. See Report No. 5.

The Committee on Finance and Appropriation gave report. Upon motion the report was referred back to the Committee.

The name of E. E. Worth was called and his character passed.

The order of the day was called and Rev. J. Hester took charge of the Memorial service. Special attention was made of the life and

THE INDIANA CONFERENCE

service of Rev. B. L. Couch, who was called to his reward May 20, 1921.

On July 8, 1921, Rev. Frank Roberts was taken from us. Appropriate remarks were made in his memory.

Other names mentioned were Elisha McClintoc, Lydia Welsh, Lucinda Lewis, and Sister Mundy.

Benediction, A. Worth.

Saturday, 2:00 P. M.

Devotions were conducted by A. L. Blake.

The roll was called and the minutes were read and approved.

The Sunday School Treasurer gave his report, which upon motion was adopted. See Report No. 10.

A resolution was presented and upon motion was adopted. See Resolution No. 23 of the Resolutions and Laws of the Conference.

The Committee on Finance and Appropriations gave the final reading of its report. Upon motion the report was adopted. See Report No. 2.

The Committee on Pastoral Relations gave the final reading of its report. Upon motion the report was adopted. See Report No. 5.

The Committee on Resolutions gave final report. A motion prevailed to adopt the report. See Resolutions.

The Conference Board of Trustees gave its report. Upon motion the action of the Board of Trustees as revealed by the reading of the minutes was approved.

Upon motion an appropriation of \$10.00 was made to the Conference Treasurer's helper for services.

Moved and supported that Rev. J. J. Coleman preach the opening sermon at our next session to be held on the Camp Ground at Fairmount, Ind.

A motion prevailed that the next Conference be held on the Tuesday nearest the middle of August on the Camp Ground at Fairmount.

A motion prevailed that when we adjourn we adjourn to meet at the call of the chair.

The minutes were read and approved.

Adjournment upon motion.

Benediction, C. S. Smith.

Resolutions and Laws of Indiana Conference

1. It is contrary to the spirit of the Discipline and our principles for our preachers to assist in any service with oath-bound societies.

2. That any candidate for Elder's Orders or to travel under the direction of the Conference, who fails to attend the Institutes and the examinations of the Conference, without sufficient cause, shall be deemed unworthy of the trust and care of souls, and refused a place among us as a minister of the Gospel, and when they shall fail to attend the Institute for two successive years they shall be dropped from the roll.

3. That it is the sense of this Conference that our houses of worship should not be open to any evangelist or minister of any other church to hold a series of meetings or to maintain a regular appointment for another congregation; provided, however, that usual denominational courtesies be extended to other ministers in occasional appointments.

4. Any waiving of the above resolution by a contract or lease of building must be obtained through the Board of Trustees of the Indiana Conference.

5. Whereas, The Discipline requires that the Stewards must meet the pastors and agree with them as to the amount necessary for their support, be it resolved: That the circuits may at the same time enter into an agreement in writing with the pastor as to the service he is to render to the church. In case the pastor shall fail to render said service, unless providentially hindered or released by the circuit, said failure shall be considered a sufficient cause to make an adjustment of the amount originally agreed upon. Otherwise the contract shall be binding upon both parties the same as any other financial obligation entered into by contracting parties.

6. Each pastor shall file a duplicate statistical report with the Committee before the close of the second day of Conference, said report to be kept on file one year, and hereafter these reports shall not be read in open Conference.

THE INDIANA CONFERENCE

7. The membership, so far as possible, shall pay all their contributions for the Conference and Connectional interests to the pastors, who shall receipt them for the same and see that it is paid to the proper authorities. Where money is paid direct to the Conference Treasurer by the membership, he shall send a duplicate receipt to the pastor of the charge where such persons are members.

8. All charges with a membership of twenty-five or more shall in addition to the regular stipulated salary, assume the responsibility of providing a suitable home in which the pastor may live.

9. We recommend that all charges and stations to which the pastor moves pay the moving and transportation expenses of said pastor, the same to be done in addition to his salary; provided this shall not interfere with the previous arrangements between pastors and charges.

10. All unaccounted for members appearing in the statistics in the membership list shall be transferred to the discontinued list. The roll of all the classes upon the charges shall be put in the hands of the pastors and they have charge of the same and make all entries therein.

11. The Committee on Elder's Orders is hereby empowered to transfer all persons to the study list who may have been recommended to travel and may not have been given work.

12. It shall be a standing rule of this Conference until revoked by vote that the President shall receive \$35.00, the Secretary \$50.00, the Assistant Secretary \$15.00, and each member of the Statistical Committee \$15.00, the same to be apportioned pro rata among the various funds of the Conference.

13. The official character of no pastor shall be passed until he shall have submitted a satisfactory report, including statistics.

14. The ordination service shall be held in connection with the memorial services of the Conference.

15. The Board of Trustees shall formulate plans to govern the Educational Secretary and Church Extension Secretary in their work, this to be a standing rule of this Conference until revoked by this body.

WESLEYAN METHODIST CONNECTION

16. It shall be a standing rule until revoked by this body that the President shall nominate his Advisory Board and the Conference shall elect his nominations.

17. It shall be a standing rule of this Conference that in the examination of character the Conference officials and General Evangelists shall be called first.

18. In the membership report all members who are found on the circuits in excess of the number reported shall be reported received.

19. No letter of standing shall be granted in the interim of Conference or during the session of Conference, until satisfactory evidence is given by the minister making the request that no outstanding debts are unprovided for and that he has honorably withdrawn from the contract for service made with a charge or Conference.

20. Be it resolved, That where the Conference demands the services of any one, that it shall bear the moving expenses, if any expense should thus be incurred.

21. Whereas, the Indiana Annual Conference Camp Meeting has reached a place in its history where it requires the best evangelistic assistance; and, whereas, the leading evangelists much of the time are slated for at least one year in advance; and, whereas, the Camp Meeting Committee have been handicapped in the selection of such evangelists who are suitable for our Camp, due to the fact that the Committee is elected to serve for one year only; therefore be it resolved, that the Committee be elected as follows: one for three years, one for two years and one for one year, and that the person elected for three years be chairman of the Committee, and that thereafter each member be elected for a term of three years.

22. Be it resolved that, It shall be the duty of the pastor to look after the insurance of our church and parsonage properties. All insurance shall provide for losses caused by fire and lightning, hail and tornado. A failure on the part of the pastor shall be a censurable offense. If the church fails to insure their property, upon reasonable effort of the pastor to secure the same, then said failure shall be reported to the President of the Conference, who shall then have the property insured. In such case, all insurance monies received from losses by fire, lightning, hail or tornado shall

THE INDIANA CONFERENCE

be used in Church Extension work as the Conference Board of Trustees deems best.

23. Whereas, there is an inexcusable tendency on the part of some of the charges to be forgetful and neglectful of the much needed donations for our Pastors; and, whereas, the salaries now received are comparatively and in some instances extremely small; and, whereas, failure on the part of the various charges to remember the Pastor with liberal donations greatly increases the financial burden and makes the matter of the family support a question of serious concern to the minister; Therefore be it resolved, that it shall be the duty of the Conference Evangelists holding quarterly meetings to faithfully inquire, first, as to whether a competent and energetic donation steward has been elected at each church on the charge; and, second, as to whether donations are regularly and systematically given to the pastor, and, third, it shall be his duty to call for a careful report from the donation steward at the business session of the quarterly meeting and to make it clear to the church or charge that the annual conference expects whole-hearted response to this need. Be it furthermore resolved that this resolution shall have record in the standing rules of the Conference and shall be binding until the action is revoked by this body.

Reports of Committees

Report No. 1.

PRESIDENT'S REPORT.

The official acts of the President for the year are as follows:

1. Appointed Rev. J. E. Smiley to General Evangelistic work.
2. Received a new church of twelve members at Clay City, organized by the Rev. H. C. Brown, and appointed him to serve them as pastor until the convening of Conference.
3. Granted a letter of transfer to Rev. John D. Lemon to the Illinois Conference.
4. Received the resignation of Rev. David Downing from the pastorate of the Bluffton charge.
5. Appointed the Rev. A. B. Dayton to the pastorate of the Bluffton charge.
6. Received Elders L. L. Folger and Anna K. Folger by letter of transfer from the North Carolina Conference.
7. Granted a letter of transfer to the Rev. J. F. Presnal to the Kansas Conference.
8. Received the Rev. John Shue upon his credentials from the International Church.
9. Accepted a new church organized under the labors of Rev. John Shue, at Lebanon, Ind., and appointed him to act as pastor until next session of Conference.
10. Appointed the Rev. S. C. Kinnison, Chairman of the Committee on Resolutions.
11. Appointed the Rev. C. A. Billheimer Chairman of the Committee on Finance and Appropriations.
12. Appointed the Rev. Jesse Whitecotton to the pastorate of the Church at Louisville, Ky.
13. On account of convictions and physical disabilities Sister Aurie L. Bodenhorn desired to be relieved of the responsibilities of the Eldership and tendered to me her parchments.

W. L. Thompson, President.

THE INDIANA CONFERENCE

Report No. 2.

REPORT OF COMMITTEE ON FINANCE AND APPROPRIATION.

We, your Committee on Finance and Appropriation, beg leave to submit the following report:

1. In view of the fact that the traveling expense of the evangelists is not less than \$150.00 per year and that they must furnish their own house, we recommend that the salary be the same as last year.

2. Considering the financial stringency of the times and the great need of the work at large, together with the load many of our churches now are carrying, we recommend that three evangelists hold all the quarterly meetings.

3. Recognizing several undesirable elements in the present arrangement, we recommend that the work be arranged as follows: All charges and stations paying \$20 or more for a single quarterly meeting shall receive four full-time quarterly meetings on Saturday and Sunday. The smaller places to be paired and so alternating that each shall receive two full-time quarterly meetings on Saturday and Sunday and two in the midst of the week.

4. Where there are unavoidable deficiencies in the salary of the evangelists, the deficit shall be paid from the arm of the work he represents.

5. Inasmuch as the executive work of the President of this Conference is so taxing and arduous, we recommend that he be relieved of all committee work except that which is ex-officio.

6. The cost of living and the long-standing low-mark of pastor's salaries makes it imperative that the salaries of our pastors be not lowered. We also urge the election of Live Donation Stewards.

7. We recommend that our Evangelists report their work quarterly in the Wesleyan Methodist.

8. We recommend that each Sunday School devote the offering on the first Sunday each month to Home Missions.

9. The Conference President in his quarterly meeting work, when emergencies arise, may call to his assistance other persons when satisfactory arrangements can be made with all concerned.

10. Whereas the assessment for the Sunday School work is not sufficient to meet the deficit in the salary of the Conference Sunday School Secretary, we recommend that special offerings be taken at the Sunday School Conventions to meet the deficit.

11. The importance of our people being informed concerning

WESLEYAN METHODIST CONNECTION

the Conference business is so great that we feel a strenuous effort should be made to secure a thorough distribution of the same, thus likewise increasing the Minute Fund, which now fails to pay expenses. We therefore recommend that the pastors be most earnestly urged to push the sale of the Minutes beyond present conditions.

12. We offer the following apportionments to the different charges for the coming year:

Charge	Evangelist	Minutes
Albion	\$100.00	\$6.50
Anderson	55.00	3.25
Blue River	110.00	6.50
Boxley	116.00	6.50
Bryant	88.00	5.75
Bluffton	24.00	1.50
Center	50.00	1.50
Cicero	28.00	1.50
Elwood	100.00	5.00
Fairmount	116.00	8.25
Fowler	60.00	2.00
Fountain City	40.00	2.50
Fishersburg	60.00	3.00
Greensboro	40.00	2.50
Greentown	50.00	4.00
Gunkle Zion	60.00	3.75
Hamlet	60.00	4.00
Hartford City	24.00	1.50
Huntington	60.00	3.00
Indianapolis	50.00	2.50
Kirklin	80.00	3.00
Kokomo	50.00	2.50
Laketon	44.00	1.50
Louisville	80.00	4.50
Larwill	110.00	4.50
Lebanon	32.00	1.50
Lewis Creek	110.00	6.50
Marion (South)	100.00	6.50
Marion (Nelson St.)	100.00	5.75
Marion (West Eighth)	60.00	2.50
Miami	40.00	1.50
Mt. Olive	50.00	2.50

THE INDIANA CONFERENCE

Charge	Evangelist	Minutes.
Mt. Etna	100.00	5.00
Mt. Zion (Howard Co.)	40.00	2.50
Mt. Zion (Henry Co.)	40.00	2.50
North Liberty	80.00	4.00
New Castle	100.00	5.75
Payne	110.00	4.00
Peru	100.00	5.75
Plymouth	110.00	4.00
Roseburg	32.00	1.50
Santa Fe	110.00	4.50
Shelbyville	50.00	4.00
Sheridan	60.00	3.00
South Bend	80.00	3.00
Summitville	64.00	3.25
Thorntown	32.00	1.50
Wabash	100.00	6.50
Warren	110.00	6.50
Waveland	40.00	1.50
Westfield	80.00	4.00
Whitehall	80.00	3.00

C. A. Billheimer,
F. R. Eddy,
D. L. Shideler,
J. L. Rigsbee,
R. D. Wise,

Committee.

Report No. 3.

CONFERENCE SUNDAY SCHOOL SECRETARY.

Plans were laid at the last annual Conference for conventions to be held in the various districts of the Conference in the month of October, with Rev. I. F. McLeister, Denominational Sunday School Secretary and Editor, in attendance. This was carried out and enthusiastic conventions were conducted at Blue River, Sheridan, Peru, Nelson St. Marion, South Bend and Bryant. We believe untold good was accomplished. Brother McLeister was splendidly received and delivered inspiring addresses at all of the above named places.

WESLEYAN METHODIST CONNECTION

Each district asked for a Spring session. These conventions were held in May and June. They were all times of inspiration and help. The annual reports of the pastors have been a joy to the heart of the Secretary. About sixty-four schools are now reported. These reports, thirty-one above sixty per cent, one as high as ninety per cent, show a very healthy condition of the work. The Sunday School Secretary can now furnish Efficiency Wall Chart, showing the percentage of efficiency to every school paying the fee of twenty-five cents, which covers expense and measuring up to sixty per cent.

We recommend that the fall conventions be held about the middle of October, with Rev. I. F. McLeister in attendance.

The Teachers' Training work has progressed splendidly, with one graduate and several who are well advanced in the examinations.

Yours in joyful service of the King,

F. R. Eddy,

Conference Sunday School Secretary.

Report No. 4.

REPORT OF CONFERENCE SUNDAY SCHOOL BOARD.

Organization.

The Sunday School in its ideal work will instruct and teach the great truths of the Gospel with the specific purpose of leading souls to Jesus Christ. To do this in the most effective manner it must proceed in an orderly way that brings co-operation. Organization cannot take the place of spirituality, but it is intended to direct spiritual effort to obtain definite results. To accomplish this desired end we believe the disciplinary plan is the best and will be most effectual.

Enrollment.

1. We earnestly urge all our schools to keep permanent records of the enrollment of all scholars.

2. The teacher or class secretary should keep a record of all members of the class to assist in seeking absentees and making reports.

3. The superintendent of all departments should keep an accurate record of their individual departments so that reports may be made accurately.

THE INDIANA CONFERENCE

Literature.

to Wesleyan Methodist literature cannot be successfully superseded in our schools. Our doctrines are fundamental and are clearly taught in our own literature as they are perhaps in nothing else. We have reached the place in our denominational work where a man is devoting his entire time to this line of work and is continually advancing the standard of efficiency in this department. We unqualifiedly urge all our schools to use our own literature.

Standards.

The "Efficiency Standards for the Wesleyan Methodist Sunday Schools" have been arranged under a different grouping into a single standard instead of former double standard and copies may now be obtained. This we believe to be an advanced step and highly approve of the same. This provides for a percentum grading for efficiency. Seventy-five (75) per cent perfect makes a school a standard school, and we recommend that when a school shall report at the end of the year and shall be credited with at least 60 per cent that a Certificate of Efficiency be granted said school for the year's work.

Organized Classes.

We approve of the organization of Sunday School classes and urge our people to secure from the Conference Sunday School Secretary the Constitution and By-Laws approved by this Board, and when they have complied with the same we recommend that a proper charter shall be issued them with the official seal thereon.

Districting.

We recommend that the Conference work be divided and District Superintendents be supplied as follows:

- Northern—E. J. Pitts.
- North Central—F. O. Spitler.
- Eastern—C. G. Payne.
- Western—C. L. Enyeart.
- South Central—D. C. Dooley.
- Southern—W. D. Baker.

WESLEYAN METHODIST CONNECTION

Reorganization, Statistics and Information.

1. We recommend that all our schools in the Indiana Conference reorganize between the first and fifteenth of July.
2. Each Sunday School Superintendent shall report the work of the Sunday School quarterly to the Church or Quarterly Conference and furnish a duplicate to the pastor.
3. The pastor shall report the work of the Sunday School to the Conference Sunday School Secretary by the first of August on the Information Blank furnished him for each school under his care.
4. Each Departmental Superintendent shall report the work of their department to the District Departmental Superintendent, who shall make a report of the progress of the work to the District Convention.

Conventions.

The Circuit and District Conventions are a great help and inspiration to our people and should be continued.

1. The Circuit Conventions should be conducted by the pastor and such help as may be obtained according to plans which may be obtained from the Conference Sunday School Secretary.

2. The District Conventions shall be held by the District Superintendents under the direction of the Conference Sunday School Secretary.

We recommend that the Conference apportionment be ten cents per member, total enrollment, including Cradle Roll and Home Department. One-half shall be for the Connectional Sunday School Secretary to be used in improving our literature and the other half for use in the Conference work.

We further recommend that the third or fourth Sunday in February be designated to raise this amount and that it be forwarded at once to the Conference Sunday School Treasurer.

F. R. Eddy,
Conference Sunday School Secretary,
H. T. Hawkins,
H. T. Arnold.

THE INDIANA CONFERENCE

Report No. 5.

COMMITTEE ON PASTORAL RELATIONS REPORT.

We, your Committee on Pastoral Relations, submit the following report:

1. We recommend that Hartford City be made a station.
2. We recommend that Greenwood be attached to Kirklin, and be known as the Kirklin charge.
3. We recommend that Sligo be dropped from the Plymouth charge, and that its membership be incorporated with that of the Plymouth church.
4. We recommend that Amboy be dropped from the Greentown charge and that its membership be incorporated with the Plevna or Greentown church.
5. We recommend that Cicero be detached from Sheridan and that it be joined to Atlanta and be known as Cicero charge.
6. We recommend that Clay City be joined to the White Hall charge.
7. We recommend that the charges be supplied as follows:

Albion—Albion, Greens Chapel, Laotto (to be supplied under the direction of President and Advisory Board) Glenn Appleman.
Anderson—Anderson, Hamilton, L. R. Mitchell.
Blue River—Blue River, Carthage, E. L. Glover.
Bluffton—Bluffton, A. B. Dayton.
Boxley—Boxley, Liberty, Roberts Chapel, Deming, D. C. Dooley.
Bryant—Bryant, Portland, Pleasant Grove, H. W. Kircheval.
Center—Center, (in hands of President.)
Cicero—Cicero, Atlanta, Mrs. Carrie Hutchins.
Elwood—Elwood, S. A. Mow.
Fairmount—Fairmount, Back Creek, J. J. Coleman.
Fowler—Fowler, Henry Hamma.
Fountain City—Fountain City, W. W. McMichael.
Fishersburg—Fishersburg, Victory Chapel, Emma Payne.
Greensboro—Greensboro, Grant City, C. C. Fields.
Greentown—Greentown, Plevna, E. A. Crim.
Gunkle Zion—Gunkle Zion, T. M. Bodenhorn.
Hamlet—Hamlet, Davis, J. W. Drake.

WESLEYAN METHODIST CONNECTION

Hartford City—Hartford City, J. W. Croy.
Huntington—Huntington, O. G. McKinley; Monument City, L. L. and Anna K. Folger.
Indianapolis—Indianapolis, Robert Johnson.
Kokomo—Kokomo, E. A. Davis.
Kirklin—Kirklin, Greenwood, A. U. and Lydia Murphy.
Larwill—Larwill, Warsaw, H. T. Hawkins, (Setta Caldwell to supply Warsaw.)
Lebanon—Lebanon, John Shue.
Lewis Creek—Lewis Creek, Wesley Chapel, Hope, Eugene Hunter; (Andrew Pitcher, to supply Hope.)
Louisville—Louisville, Jesse Whitecotton.
Laketon—Laketon, A. P. Foshee.
Mt. Etna—Mt. Etna, Lancaster, H. T. Arnold.
Mt. Zion—Mt. Zion (Howard Co.,) W. H. and Ruth Drake.
Mt. Zion—Mt. Zion, (Henry Co.,) Bessie and Lee Petry.
Mt. Olive—Mt. Olive, Carlos Coates.
Marion—(South), C. A. Billheimer.
Marion—(West), R. A. and Edna Smeltzer.
Marion—(Nelson St.,) E. E. Cory.
Miami—Miami, Amos and Verna Jackson.
North Liberty—Beaver Creek, Star, Pleasant Grove, Alva Barr.
New Castle—New Castle, W. D. Baker.
Payne—Edgerton, Bethel, C. G. Payne.
Peru—East Washington St., West 13th St., C. L. Enyeart.
Plymouth—Plymouth, Shiloh, Fairmount, E. J. Pitts.
Roseburg—Roseburg, Carlos Coates.
Santa Fe—Santa Fe, Pleasant Grove, W. G. Bogue.
Sheridan—Sheridan, Paul Hodge.
South Bend—South Bend, C. N. Porter.
Summitville—Summitville, Fowlerton, Everett Mills.
Shelbyville—Shelbyville, W. C. Ott.
Thorntown—Thorntown, Dallas Ricker.
Wabash—Wabash, F. O. Spitler.
Warren—Warren, Plummers Chapel, South Salem, H. G. Brown.
Waveland—Antioch, Eddie Smithie.
Westfield—Westfield, Carmel, Forest Grove, C. W. Harmon.
White Hall—In hands of President.
Superannuated Ministers—Eber Teter, Aaron Worth, R. L. Fisher, J. F. Shutters, W. M. Bailey.
Elders on Probation—G. W. Brown, Philip Simmons, Glen Appleman.

THE INDIANA CONFERENCE

- Unstationed Elders—R. A. Carter.
Conference Missionary—G. H. Payne.
Supernumerary List—J. W. Brown, L. Shatford.
City Missionary—S. C. Figg.
Connectional Missionary Secretary—T. P. Baker.
Conference President, Missionary Secretary, Conference Evangelist—W. L. Thompson.
Conference Evangelist, Church Extension, Tithing Secretary—C. S. Smith.
Conference Evangelist, Sunday School Secretary—F. R. Eddy.
President of Marion College—H. Clark Bedford.
Dean of Theology in Marion College—J. O. Baker.
Professor in Marion College—E. E. Worth.
Instructor in Marion College—Paul Billheimer.
Financial Agent and Treasurer of Marion College—S. C. Kinison.
General Evangelists—Fred DeWeerd, Lelia DeWeerd, M. M. Moore, M. V. Sears, W. H. Hopkins, E. A. Schooley, A. L. Blake, G. W. Zike, W. W. Noggle, Anna Linville, Belle McClure Louks, S. D. Hawkins, L. T. Howell, Everett Harrington, Dempsey Howard, H. Akright, Josephine Akright, H. C. Brown, Lucinda Smith, T. J. Pierce, W. Z. Horbury, R. D. Wise, Albert Lee, Eva Mitchell, Jacob Hester, J. E. Smiley, Earl Renner, S. Bedford.
Superintendent of Camp Ground—L. H. Carter.
Missionaries to Africa—B. I. Eddy, Dollie R. Eddy.
Missionaries to India—W. C. Morris, Vera Morris, Mary Greene, Flora Pitts.
Missionary-elect to India—Edna Smeltzer.
Missionaries-elect to Africa—Walter Jennings, Miriam Jennings, Carmen Decker.

Report No. 6.

RESOLUTIONS COMMITTEE REPORT.

Your Committee on Resolutions submits for your consideration the following report:

"United we stand, divided we fall," can be spoken of the Church as well as the nation. We have great reasons for thanksgiving because of the unity of spirit among our officials, and take it as an example to be followed throughout the Church. The bless-

WESLEYAN METHODIST CONNECTION

ing of the Lord has been upon the work of our President, Rev. W. L. Thompson, but it is only as we co-operate with him to the limit of our ability that he can be made the greatest blessing to us, therefore we pledge ourselves to a greater degree of co-operation, if possible, during the coming year.

We thank God for the untiring labors of our Evangelists during the past year and consider that we have been highly favored to have such men as these to carry the Gospel to a lost and stricken world, also the message of cheer and encouragement to the pastor and his congregation, so we determine to co-operate fully with them, thus fulfilling the law of mutual benefit.

We consider our Conference Board of Trustees to be men of God, also men of a vision, men of plans and ability, but the best devised plans must have co-operation to be successfully carried out; so it is with humility that we give ourselves anew to the Church to help carry out these plans.

We consider the pastors of the Conference to be among the most self-sacrificing and faithful workers to be found anywhere. They have diligently applied themselves to the tasks before them. Many have been denied the comforts of life, and the great confusion that exists in the world today has added much to the already heavy burdens of our ministers.

We, therefore, as a body, consider it fair and just that the pastors should have two weeks of relaxation from their manifold duties that they might be better qualified physically and mentally to accomplish the work whereunto they have been sent. The vacation to be considered as a part of the year's work and to be on full pay, the time to be arranged satisfactorily between pastor and people.

1. We recognize in Christian education one of the strongest bulwarks of the Church and nation. Therefore, in sacred honor, we pledge to Marion College, with our other denominational institutions of learning, our heartiest support and co-operation by registering our sons and daughters as students, and giving of our means in such way as to insure development and success. We further pledge to our beloved College President, Dr. H. C. Bedford, and his able faculty, with the Board of Management, our most loyal co-operation and support.

2. It is with a deep sense of concern that we apprehend the stealthy encroachments of the arch-fiend of the pit upon the Church of Jesus Christ, especially so in the attacks of destructive criticism formulated in the so-called "New Theology," a doctrine that would rob the Christ of His Deity. It seeks to exempt man from his

THE INDIANA CONFERENCE

total depraved state. It makes evil environment the author of sin, instead of our corrupt nature. It impudently denies the need of the vicarious atonement of Jesus Christ as the remedy for sin. It seeks to displace the regeneration work of the Holy Spirit with social culture and refinement. It gives us a human religion and takes away the Divine, and yet insists that such is the world's need and a true interpretation of Christianity. Therefore, be it the sense of this body of Christian believers, that we boldly withstand these pernicious doctrines and earnestly "contend for the faith that was once delivered to the saints."

3. We lament the fact that the reactionary effect of the war has brought about the serious depression in the business realm which has reacted upon the activities of the work of the Church; therefore, we call ourselves, ministry and laity, to a greater degree of self-sacrifice, that we might be the more able to support the various arms of the Church and educational work committed to our care.

4. Recognizing the increasing evils of the use and traffic in tobacco and cigarettes, that it incurs a tremendous waste of money and is a great injury to soul, body and mind, we therefore decry its use, and co-operate with the No-Tobacco League and such like societies that seeks the prohibition of traffic in cigarettes and tobacco and the use of the same.

Further:—Be it resolved, that we recommend to the churches that persons using cigarettes and tobacco for such purposes as smoking and chewing, or any such like purpose or intent, shall be deemed unfit examples of Christian manhood or womanhood to occupy offices of the Church or Sabbath School, and therefore should not be elected to the same.

Owing to the great amount of monies received and accounted for by the Conference Treasurer, Be it the sense of this body that all monies paid the Treasurer at time of Conference settlement be paid by check, draft or currency.

We recommend that in future this Conference shall elect a Chairman to a Committee on Resolutions, and that said Chairman shall be empowered to nominate his or her assistants.

Respectively submitted,

T. M. Bodenhorn,
G. H. Payne,
Marion Ellingwood.

THE INDIANA CONFERENCE

Report No. 7.

AUDITING COMMITTEE'S REPORT.

We, your Auditing Committee, having carefully audited the book of the Conference Treasurer, find that, with the exception of clerical error, which in no way affects the cash account, that the books balance correctly, showing \$2,739.87 in bank, which amount is \$6.50 over amount in Conference funds.

We also having audited the books of the Conference Sunday School Treasurer, find that his cash and bank accounts agree with his balance, receipts and disbursements.

D. C. Dooley,
E. L. Glover,
Committee.

Report No. 8.

CONFERENCE TREASURER'S REPORT.

Albion Church Fund.

Cash on hand from last year,	\$.00
Received interest and endowment	101.96
Disbursed	92.42
	<hr/>
Cash on hand	9.54
Endowment on interest	\$1810.46

General Conference Delegate Fund.

Cash on hand from last year	\$ 94.30
Received from circuits	62.55
	<hr/>
Total	\$ 156.85
Disbursed	76.37
	<hr/>
Cash on hand	\$ 80.48

Institute Fund.

Cash on hand from last year	\$ 11.51
Disbursements00
	<hr/>
Cash on hand	\$ 11.51

THE INDIANA CONFERENCE

Church Extension Fund.

Cash on hand from last year	\$ 448.26
Received from all sources	805.12
<hr/>	
Total	\$1253.38
Disbursed	793.83
<hr/>	
Cash on hand	\$ 459.55

Home Mission Fund.

Cash on hand from last year	\$ 633.50
Received from all sources	1795.03
<hr/>	
Total	\$2428.53
Disbursed	1763.63
<hr/>	
Cash on hand	\$ 664.90

Superannuated Ministers' Fund.

Cash on hand from last year	\$1010.80
Received from all sources	994.86
<hr/>	
Total	\$2005.66
Disbursed	\$1467.50
<hr/>	
Cash on hand	\$ 538.16
Loans (U. S.)	200.00
Total loans	2980.00

Conference Mission Fund.

Cash on hand from last year	\$ 466.38
Received from all sources	1632.81
<hr/>	
Total	\$2099.19
Disbursed	1390.76
<hr/>	
Cash on hand	\$ 708.43

WESLEYAN METHODIST CONNECTION

Foreign Mission Fund.

Cash on hand from last year	\$ 645.20
Received from all sources	3366.21
<hr/>	
Total	\$4011.41
Disbursed	3822.85
<hr/>	
Cash on hand	\$ 188.56

Minute Fund.

Cash on hand from last year	\$ 90.08
Received from all sources	208.17
<hr/>	
Total	\$ 298.25
Disbursed	207.01
<hr/>	
Cash on hand	\$ 91.24

Educational Fund.

Cash on hand from last year	\$ 243.47
Cash and receipts from various sources	4251.86
<hr/>	
Total	\$4495.33
Disbursed	4514.33
<hr/>	
Deficit	\$ 19.00
<hr/>	
Cash in bonds	\$2733.37
Cash in hand	2739.87
<hr/>	
Over cash on hand	\$ 6.50

J. E. Smiley, Conference Treasurer.

Report No. 9.

ITINERACY AND ELDER'S ORDERS COMMITTEE REPORT.

We, your Committee on Itineracy and Elder's Orders, submit the following report:

We recommend that Philip Simmons and Glen Appleman be

THE INDIANA CONFERENCE

accepted on a year's probation and that they be ordained according to our usages at the expiration of said probationary period.

We also recommend that the name of W. Z. Horbury be placed on the list of Elders.

In the case of G. W. Brown, we recommend that he be ordained after he shall have completed our disciplinary course of study.

We recommend the following named persons to pursue the course of study: Sadie Betz, Jonas Fuller, Hazel Conover, Allen Tague, Edna Baker, Chas. Abrams, Merton Duckett, James Wright, Otto Moore, David C. Collins, Donald Babb, Warren Dillon, Ralph Eastburn, Thomas Smith, Clarence Huffman, Elmer Murdock, William Eudaly, Fred Mattson, Paul Mitchell, Orville Hubbard, Lorin Van Mater, Idelta Pickett, A. F. Klein, Willie Fields, L. C. Tindall, George Pence, C. D. Crabill, Carrie Hutchins, Chas. Sims, Geo. Cole, Mabel Hines, Hurvey L. Smith, Francis Berkebile, Jesse Cassidy, Walter R. Morris.

We recommend that the following named persons be received to travel under the direction of the Conference: E. L. Glover, Eugene Hunter, Emma Payne, Henry Hamma, Robert F. Johnson, W. H. Drake, Ruth Drake, H. W. Kercheval, C. C. Fields, Paul Billheimer, Lee Petry, Bessie Petry, Flora Pitts, W. C. Ott, Edna C. Smeltzer, Eddie Smithie, W. R. Morris, Dallas Ricker, Alva Barr, E. C. Harrington, Dempsey Howard, Everett Mills, C. W. Harmon, Carlos Coates, J. W. Drake, A. B. Dayton, Paul Hodge, Earl Renner, Carrie Hutchins, J. W. Croy, Andrew Pitcher, R. J. Smeltzer, Amos Jackson, L. T. Howell, Albert Lee, Eva Mitchell, J. E. Smiley.

Report No. 10.

CONFERENCE SUNDAY SCHOOL TREASURER'S REPORT.

Balance on hand from last year	\$ 139.60
Received during year	560.17
Total to date	\$ 699.77
Total disbursements	554.65
Balance on hand	\$ 145.12

H. T. Arnold, Conference Sunday School Treasurer.

WESLEYAN METHODIST CONNECTION

STATISTICAL REPORT.

	Time Employed (Months)	Appointments	No. of Church Societies	No. Wesleyans Taken	S. S. Banners Taken	Teacher's Quarterlies	Scholar's Quarterlies	Junior Quarterlies	Primary Class Papers	Our Little Folks Cards
1. Albion	12	3	3	20	85	15	80		32	40
2. Anderson	12	2	2	3	27	10	16	20	25	25
3. Atlanta	12	1	1	1	10	1	21		8	
4. Blue River	12	2	2	29	31	5	46	10	26	20
5. Bluffton	12	2	2	3	20	5	50		40	40
6. Boxley	12	4	4	38	123	28	165	15	15	53
7. Bryant	12	3	3	18	105	23	125	80	43	43
8. Clay City	10	1	1	1		4	20	10	20	
9. Elwood	12	1	1	24	75	12	36	24	30	30
10. Fairmount	12	2	2	100	175	30	100	40	40	50
*11. Fowler	12	1	1	6	20	4	25			12
12. Fowlerton	12	1	1	3		30	15			10
13. Fountain City	12	1	1	10	20	5	30	5	5	5
14. Fishersburg	12	2	2	10	27	10	40	31	12	12
15. Greensboro	12	2	2	11	15	4	30	10	10	18
16. Greentown	12	2	3	10	40	9	45	15	40	25
17. Greenwood	12	1	1	2	4	10	10	6	6	6
18. Gunkle Zion	12	1	1	8	15	5	30		12	12
19. Hamlet	12	2	2	22	50	24	100	10	22	22
20. Huntington	12	2	2	20	70	14	70	15	50	50
21. Indianapolis	12	1	1	4	55	7	20	25		25
*22. Kirklín	12	1	1	7	30	6	24	10	12	16
23. Kokomo	12	1	1	3	40	7	20	35	20	20
24. Larwill	12	2	2	22	100	15	85	20	20	20
25. Laketon	12	1	1	16	24	4	35	12	8	
26. Lebanon		1	1							
27. Louisville		1	1							
*28. Lewis Creek	12	3	3	42	65	15	125	30	7	20
*29. Mt. Etna	12	2	2	17	110	20	96	30	35	35
30. Mt. Zion, Howard County ..	12	1	1	7	25	6	45		12	12
31. Mt. Zion, Henry County ..	12	1	1	10	18	8	48	8	8	11
32. Mt. Olive	12	1	1	8	15	5	35		15	15
33. Marion, South	12	1	1	29	175	20	200	36	40	40
34. Marion, Nelson Street	12	1	1	23	120	12	85	25	40	40
35. Marion, West 8th Street	12	1	1	8	30	8	24	12	15	20
36. Miami		1	1							
37. New Castle	12	1	1	18	100	21	75	25	20	50
38. North Liberty	12	3	3	15	30	9	40	8	20	18
39. Payne	12	2	2	30	60	11	110	12	30	30
40. Peru	12	2	2	20	75	19	120		45	40
41. Plymouth	12	4	4	30	78	11	112	25	21	39
42. Roseburg	12	1	1	4	12	6	12	12	8	
43. Summitville	12	1	1	20	7	30	20		20	10
44. Santa Fe	12	2	2	9	15	5	60	15	28	28
45. Shelbyville	12	1	1	11	50	9	50	30	10	15
46. Sheridan	12	2	2	20	35	23	28		25	18
47. South Bend	12	1	1	10	35	41	30	20	30	30
48. Center	12	1	1	3						
49. Thorntown	12	1	1	9	10	3	17		10	10
50. Wabash	12	1	1	30	120	20	100	35	50	50
51. Warren	12	3	3	35	136	36	160	60	36	36
52. Westfield	12	3	3	26	75	18	120	8	38	40
53. Waveland	12	1	1	5	10	4	30		10	10
54. Whitehall	12	3	3	12	20	12	80	50	30	40
Totals	610	89	90	822	2596	600	3085	873	1099	1205

* Loss caused by division of charge.

THE INDIANA CONFERENCE

STATISTICAL REPORT—Continued.

	Received	Expelled	Discontinued	Died	Granted Letters	No. reported last year	No. at beginning of year	Present number	Gain	Associate Members	Baptized	Unstationed Elders	Licentiates	Members Tithing.
Albion	17			3	4	78	78	88	10		16		3	30
Anderson	5	1				58	58	62	4	5	8		4	12
Atlanta	14							14	14					
Blue River	17	1			1	143	143	158	15	31	16		4	20
Bluffton	10	5			4	67	67	66	—1	2			1	5
Boxley	32	3	2	2	2	205	205	230	25		14		3	24
Bryant	12	1	1	1	1	127	127	136	9	18	7		5	20
Clay City	19							19	19				1	4
Elwood	44		1	5	5	56	56	94	38	11	27		1	30
Fairmount	22	7	3	16	16	292	292	288	—4	50	4		6	50
Fowler	1	35	1			49	49	14	—35					
Fowlerton	4		1			53	53	56	3					
Fountain City			1			31	31	30	—1					9
Fishersburg			1			92	92	91	—1				2	7
Greenboro	3	4		1	1	30	30	28	—2				1	
Greentown	5	1			1	77	77	80	3		6			16
Greenwood	14							14	14	2				
Gunkle Zion	39							39	39	2	3		1	11
Hamlet	14		3	13		78	76	—2	9	6			1	14
Huntington	108					108	108	9	4	1			1	25
Indianapolis	18	4		3	30	30	41	11		5			1	5
*Kirklin	2	35				51	51	18	—33	4			1	8
Kokomo	13	1	1		36	36	47	11		5			2	13
Larwill	6	10	1	6	120	120	109	—11		2			1	7
Laketon		2			44	44	42	—2						
Lebanon	11						11	11						
Louisville	55						55	55						
*Lewis Creek	3	28	2	3	211	211	181	—30		12			10	40
*Mt. Etna	8	142	1	5	268	268	128	—140	31	3				32
Mt. Zion How'd Co.		3			40	40	37	—3	3					2
Mt. Zion Henry Co.	4				1	43	43	46	3		2		2	7
Mt. Olive	9		1		1	37	37	44	7	16	7		1	7
Marion South	35	7			1	110	110	137	27	18			9	45
Marion Nelson St.	20	15		8	106	106	103	—3	14	14			3	28
Marion W. 8th St.	30		1	2	39	39	66	27	15				2	10
Miami					37	37	37							
New Castle	12	8	4	4	102	102	98	—4		5			4	28
North Liberty	4		1		103	103	106	3	5				3	15
Payne	1				69	69	70	1	15					14
Peru	11	1	1	3	98	98	104	6	9	10			2	30
Plymouth	16		2	18	160	160	156	—4	1	17				33
Roseburg	1				18	18	19	1		3				3
Summitville	11		1	1	39	39	48	9	21	7			1	1
Santa Fe	1	25	1	2	97	97	70	—27	20				1	20
Shelbyville	37	1	1	2	33	33	33	3					1	10
Sheridan	29	1	1	4	59	59	82	23		2			2	16
South Bend	10	11	1	1	50	50	47	—3	1	2			1	12
Center		15			36	36	21	—15						
Thorntown	10	10			20	20	20			8			2	7
Wabash	14	1		1	159	155	165	10		33			2	31
Warren	17		2	9	220	220	226	6	16	10			4	30
Westfield	31		3		128	128	155	27	16	19				35
Waveland	2		1		27	27	27		3					6
Whitehall	14				93	93	107		14		6		4	24
Totals	815	1	378	45	126	4082	4082	4347	265	363	272	1	94	805

WESLEYAN METHODIST CONNECTION

STATISTICAL REPORT—Continued.

	No. of Sabbath Schools	No. of Officers	Officers not Teach. or Schol.	No. Teachers	No. Scholars in Home Dept.	Scholars in Cradle Roll	Scholars in Main School	Total No. in Sab. Schools	Average Attendance	No. of Scholars Converted	No. Schol. Joining Church	No. of Departmental Supts.	Teach. in Training Course	No. of Books in Library
Albion	3	18	5	13	6	15	150	189	114	8	12	8		
Anderson	2	18		16	20	50	104	190	70	18	4	7		8
Atlanta	1	4		11	3	10	28	12	1	1	4			
Blue River	2	18		10	15	13	98	136	65	16	16	10	9	
Bluffton	1	10		6			60	66	40			5	1	
Boxley	4	30	2	23	45	58	245	373	170	43	25	19		
Bryant	3	14		21	4	46	283	354	206		20	12	7	9
Clay City	1	3		4			66	70	40		4			
Elwood	1	5	2	11	60	26	112	211	97	20	20	4		
Fairmount	2	36	6	19	24	30	250	329	170	30	20	8	1	
Fowler	1	5		3			60	63	35	5	1			
Fowlerton	1	7		5			60	65	37	6	4	2		
Fountain City	1	3		5	5	7	30	47	25			4		
Fishersburg	2	10	4	8	55	22	101	190	57	13	3	8		
Greenboro	2	7		6			14	28	48	27	9	8		
Greentown	2	19	4	9			6	75	91	60	7	4	5	7
Greenwood	1	5		4			18	22	15					
Gunkle Zion	1	6	1	5			13	61	80	50	1	1	1	
Hamlet	2	9	4	5	32	41	114	196	76		9	7	5	
Huntington	2	2		14	10	60	140	226	110	7	5	9		25
Indianapolis	1	8	1	7			43	81	132	68	13	3	6	
*Kirklin	1			6	12	21	60	99	39	6	1	4		
Kokomo	1	3		6			60	90	156	60				
Larwill	2	13	2	9	15	24	97	147	75	1	3	8		
Laketon	1	11	1	5		7	40	53	35			4		
Lebanon														
Louisville														
*Lewis Creek	3	13	2	16		45	201	264	105	8	2	6		
*Mt. Etna	2	18	2	14	6	47	164	233	99	26	13	6		
Mt. Zion Howard Co.	1	8	1	6	12	8	60	87	48	1		5		
Mt. Zion Henry Co.	1	9		5	2	1	50	58	29	11	2	4		
Mt. Olive	1	12	1	4	14	6	30	55	24	12	12	5		
Marion, South	1	7	2	14	16	24	165	221	160		12	4	3	
Marion, Nelson St.	1	28	1	11		24	174	210	122	6	20	4		16
Marion W. 8th St.	1	11		7		60	50	117	60	18	16	4		
Miami														
New Castle	1	2	2	9	4	50	138	203	105	22	11	5		
North Liberty	2	23	4	9	11	22	65	111			7			
Payne	2	8		9		28	112	149	81	6	1	5		
Peru	2	26	1	15	20	113	178	327	110	25	4	10	2	
Plymouth	3	28	5	12	20	22	142	201	103	8	2	7	4	60
Roseburg	1	5		2			15	17	10		2			
Summitville	1	13		7	3	31	86	127	40	8	4	4		
Santa Fe	2	14	2	8	18	19	75	122	55	2	1	7		
Shelbyville	1	11		7	8	16	50	81	35	15	3	3	8	
Sheridan	2	10	2	9	32	20	60	123	50	6	3	8		
South Bend	1	5	1	9	30	29	75	144	67	8	5	4		
Center														
Thorntown	1	3		3			35	42	35			2		
Wabash	1	11	2	13	13	32	217	277	160	50	12	5	25	30
Warren	3	12	4	20	14	34	230	302	180	20	10	12		30
Westfield	3	10	6	14	15	32	135	202	127	43	20	12		
Waveland	1	8	2	4	20	9	50	85	29	5	4	4		
Whitehall	3	26		11		10	145	166	95	9	13	8		27
Totals	81	583	74	462	576	1241	5135	7488	3727	500	340	277	76	182

THE INDIANA CONFERENCE

STATISTICAL REPORT—Continued.

	No. Church Buildings	Value of	Amt. of Indebtedness	No. of Parsonages	Value of	Amount of indebtedness	Cash or Other Values on Hand
Albion	3	\$3000.00		1	\$1000.00		
Anderson	2	2200.00					\$508.00
Atlanta	1	500.00		1	500.00		
Blue River	2	2800.00		1	2200.00	\$500.00	525.00
Bluffton	1	1500.00		1	500.00		
Boxley	4	16000.00	\$2715.00	1	1000.00		
Bryant	3	7000.00	65.00	1			
Clay City	1	600.00	50.00		1000.00		
Elwood	1	1000.00		1	1000.00		400.00
Fairmount	2	16000.00	750.00	1	1600.00		20.00
*Fowler	1	1200.00		1	1200.00		
Fowlerton	1	3700.00					
Fountain City	1	3500.00		1	1500.00		
Fishersburg	2	3000.00	65.00	1	600.00		30.00
Greenboro	2	1100.00	26.47	1	250.00		
Greentown	1	1000.00		1	1800.00	700.00	58.17
Greenwood	1	800.00					
Gunkle Zion	1	2000.00					
Hamlet	2	3000.00		1	1200.00		
Huntington	2	3000.00					355.00
Indianapolis	1	2500.00					
*Kirklin	1	1500.00		1	1050.00		
Kokomo	1	4000.00	1700.00				
Larwill	2	3400.00		1	1200.00		22.75
Laketon	1	2500.00		1	2000.00		60.00
Lebanon							
Louisville							
*Lewis Creek	3	6500.00		1	1500.00		114.00
*Mt. Etna	2	7000.00		1	1000.00		.18
Mt. Zion, Howard Co. .	1	1000.00					
Mt. Zion, Henry County	1	1500.00		1	3500.00	2000.00	
*Mt. Olive	1	1500.00					
Marion, South	1	800.00		1	2000.00	1100.00	500.00
Marion, Nelson Street .	1	4000.00		1	1600.00	1070.00	375.00
Marion, W. 8th St. . .	1	2000.00					
Miami							
New Castle	1	12500.00	3500.00	1	2500.00	1000.00	
North Liberty	3	3100.00					
Payne	2	4000.00	820.00	1	1000.00		
Peru	2	3600.00	500.00	1	1500.00		450.00
Plymouth	3	1800.00		1	1450.00		280.50
Roseberg	1	1500.00		1	600.00		50.00
Summitville	1	1200.00	74.24				140.35
Santa Fe	2	6000.00		1	3000.00		
Shelbyville	1	4500.00	345.00				
Sheridan	2	9500.00					
South Bend	1	3000.00	522.41	1	3000.00	1180.00	
Center	1	600.00					
Thorntown	1	2575.00					
Wabash	1	4000.00			1800.00		
Warren	3	10000.00		1	1200.00		
Westfield	3	4000.00		1	1500.00		
Waveland	1	3000.00					
Whitehall	3	5500.00	100.00				100.00
Totals	83	\$191475.00	\$11233.12	31	\$46250.00	\$7550.00	\$3988.95

WESLEYAN METHODIST CONNECTION

STATISTICAL REPORT—Continued.

	Pastor's Salary	Parsonage Rent	Fees, Marriage and Funeral	Gifts	Total for Pastor
Albion	\$846.25	\$72.00	\$32.00	\$147.75	\$1098.00
Anderson	520.00	60.00	1.00	69.19	650.19
Atlanta	66.25				66.25
Blue River	1000.00	180.00		90.00	1270.00
Bluffton	233.47	16.00	11.00		260.47
Boxley	1000.00	100.00	23.00	195.88	1318.88
Bryant	844.03	80.00	13.00	221.24	1158.27
Clay City	187.18			6.00	193.18
Elwood	1300.00	120.00	30.00	24.00	1474.00
Fairmount	1000.00	120.00	35.00	100.00	1255.00
*Fowler	394.20	125.00		45.00	564.20
Fowlerton	200.00			6.50	206.50
Fountain City	220.00				220.00
Fishersburg	500.00	60.00	12.00	145.00	717.00
Greenboro	236.50	36.00		134.50	407.00
Greentown	1000.00	144.00	22.00	80.00	1246.00
Greenwood	183.85		3.00	2.50	189.35
Gunkle Zion	509.00	108.00		220.00	837.00
Hamlet	866.71	100.00	49.00	303.43	1319.14
Huntington	800.00	166.00	5.00	375.00	1346.00
Indianapolis	1039.40		18.00	228.61	1286.01
*Kirklin	675.00	84.00	12.00	100.00	871.00
Kokomo	416.00		29.00	27.12	472.12
Larwill	957.81	84.00	5.00	225.29	1272.10
Laketon	500.00	100.00	20.00	88.16	708.16
Lebanon					
Louisville					
*Lewis Creek	1056.90		23.00	238.00	1317.90
*Mt. Etna	940.00	72.00	14.00	210.00	1236.00
Mt. Zion, Howard Co.	325.00	144.00	5.00	79.58	553.58
Mt. Zion, Henry Co.	700.00	120.00	7.00		827.00
Mt. Olive	300.61		5.00	27.95	333.56
Marion, South	1500.00	180.00		65.00	1745.00
Marion, Nelson Street	1300.00	200.00	7.00	96.65	1603.65
Marion, West 8th St.	693.25	50.00	6.00	100.75	850.00
Miami					
New Castle	1040.00	240.00	27.00	141.68	1448.68
North Liberty	600.00	96.00	17.00	283.72	996.72
Payne	1100.00	72.00		205.91	1377.91
Peru	1106.36	120.00	49.00	277.82	1503.18
Plymouth	800.00	144.00	13.00	309.50	1266.50
Roseburg	144.18	20.00		11.50	175.68
Summitville	273.59		2.00	15.49	291.08
Santa Fe	600.00	120.00		186.50	906.50
Shelbyville	530.84		3.00	45.00	578.84
Sheridan	429.00	96.00	25.00	47.90	597.90
South Bend	946.68	240.00	5.00	65.03	1256.73
Center	83.00			13.90	96.90
Thornstown	345.66			34.55	380.21
Wabash	1300.00	180.00	45.00	160.00	1685.00
Warren	1100.00	120.00	75.00	250.00	1545.00
Westfield	616.45	100.00	10.00	674.43	1400.84
Waveland	230.00	25.00	5.00	100.00	360.00
Whitehall	384.59		5.00	9.55	399.14
Totals	\$33941.72	\$4094.00	\$668.00	\$6435.60	\$45139.32

THE INDIANA CONFERENCE

STATISTICAL REPORT—Continued.

	Conference Evangelists	Evangelistic Help	Sabbath School Expense	Building and Repairs	Incidental Expenses	Total for Churches
Albion	\$98.00	\$277.00	\$127.00	\$110.00	\$160.41	\$772.41
Anderson	55.20	85.00	92.81		212.64	446.15
Atlanta	12.00		10.33		27.79	50.12
Blue River	110.00	186.00	60.00		200.00	556.00
Bluffton	22.00	29.92	36.90	307.75	102.60	499.20
Boxley	116.00	437.26	224.19		384.37	1161.82
Bryant	88.00	190.00	131.49	90.62	197.78	697.89
Clay City	12.75	72.65	35.05		62.99	183.44
Elwood	80.00	181.00	137.25	124.25	124.72	647.22
Fairmount	116.00	195.00	337.00	148.00	675.46	1471.46
*Fowler	62.54		23.00	7.00	28.00	120.54
Fowlerston	28.00	200.00	30.40		110.03	368.43
Fountain City	18.00	46.25	24.00	90.00	30.00	208.25
Fishersburg	60.00	50.00	60.50	95.25	175.25	441.00
Greensboro	40.00	122.00	30.00	126.00	148.35	466.35
Greentown	78.75	262.00	64.94		136.49	542.18
Greenwood	24.50	43.11	2.00		36.99	106.60
Gunkle Zion	60.00		35.80	55.25	95.00	246.05
Hamlet	60.00	273.58	201.07		165.84	700.49
Huntington	50.00	243.00	96.00		200.00	589.00
Indianapolis	54.50	255.10	63.50	114.00		487.10
*Kirklin	68.00		42.49	19.40	143.39	273.28
Kokomo	42.00	155.74	103.72	2300.00	230.00	2831.46
Larwill	110.00	159.13	120.93	155.33	107.34	652.73
Laketon	40.00		47.83		87.63	175.46
Lebanon						
Louisville						
*Lewis Creek	110.00	214.00	220.10	189.00	316.25	1049.35
*Mt. Etna	88.00	494.50	144.40	508.43	143.58	1378.91
Mt. Zion, Howard Co.	64.00	44.67	36.00		40.00	184.67
Mt. Zion, Henry Co.	80.00	94.00	22.86		200.00	396.86
Mt. Olive	28.00	71.00	32.45		246.16	377.61
Marion, South	80.00	250.00	210.00		566.00	1106.00
Marion, Nelson St.	80.00	202.00	211.92	860.00	362.81	1716.73
Marion, W. 8th St.	60.00	135.00	47.89		64.65	307.54
Miami						
New Castle	80.00	206.66	145.14	9021.54	257.92	9711.26
North Liberty	80.00	256.00	60.00	20.00	50.00	466.00
Payne	110.00	205.52	120.05	377.72	221.20	1034.49
Peru	85.15	284.00	171.01	122.87	324.26	987.29
Plymouth	141.95	376.41	111.24	19.60	152.03	801.23
Roseburg	24.50	4.50	15.60	55.00	10.00	109.60
Summitville	24.75	84.00	37.68	124.24	44.00	314.67
Santa Fe	112.00	63.10	52.22	12.99	149.55	389.86
Shelbyville	50.00	170.00	82.80		127.00	429.80
Sheridan	60.00	74.10	88.30	28.55	140.92	391.87
South Bend	60.00	182.00	137.99	237.32	64.99	682.30
Center	29.50					29.50
Thornstown	32.00	105.50	35.50		41.00	213.50
Wabash	80.00	250.00	437.00	700.00	250.00	1717.00
Warren	110.00	120.10	200.00	100.00	458.00	988.00
Westfield	80.00	166.00	100.00	100.00	96.00	542.00
Waveland	40.00	66.50	35.51	32.00	28.00	202.01
Whitehall	61.26	65.98	54.47	600.00	75.00	856.71
Totals	\$3357.35	\$7649.71	\$4947.83	\$16852.11	\$8272.39	\$41079.39

WESLEYAN METHODIST CONNECTION

STATISTICAL REPORT—Continued.

	Foreign Missions	Home Missions	Conference Missions	Church Extension	Connecional Education	College Building Fund
Albion	\$102.75	\$88.73	\$66.00	\$47.27	\$95.50	\$28.00
Anderson	92.26					
Atlanta		6.50				2.00
Blue River	116.35	84.01	112.00	66.00	365.79	365.00
Bluffton			3.25			
Boxley	169.63	109.32	14.00	15.56	171.01	268.00
Bryant	229.49	21.03	16.25	35.78	88.50	76.00
Clay City		8.65	9.00	2.00		
Elwood	146.10	26.32	15.00	6.00	183.00	62.00
Fairmount	1480.62	72.70		30.21	491.40	356.50
*Fowler	35.86	15.92		7.00	12.50	
Fowlerston	7.90			10.00	7.61	
Fountain City	24.55	10.00	10.00		18.75	5.00
Fishersburg	30.12	16.25	5.00	2.00	18.77	2.30
Greensboro	6.01	8.45			10.00	5.00
Greentown	153.32	26.88	13.13	10.00	108.50	
Greenwood	11.83	4.00	.50			
Gunkle Zion	17.63	30.55	43.51	12.00	127.50	25.00
Hamlet	97.49	19.42	52.00	42.00	133.50	61.00
Huntington	133.95	40.05	26.00	19.50	119.93	
Indianapolis	35.42	27.90		21.25	39.75	5.25
*Kirklin	138.38	32.90	29.00		5.00	20.00
Kokomo		22.27				
Larwill	88.84	73.75	68.00	51.50	74.30	47.50
Laketon	132.36	28.65	10.00			
Lebanon						
Louisville						
*Lewis Creek	156.89	59.41	102.38		292.60	98.50
*Mt. Etna	165.27	34.38	109.03	50.03	187.50	10.00
Mt. Zion, Howard Co.	79.50	37.99	1.03		57.00	100.00
Mt. Zion, Henry Co.	40.06		41.50	15.20	80.00	51.80
Mt. Olive	22.73	12.85	28.50	11.07	52.00	
Marion, South	729.86	144.12	61.00		219.75	495.00
Marion, Nelson St.	162.08	157.00			121.00	371.00
Marion, W. 8th St.	137.80	43.31			20.00	
Miami						
New Castle	60.34	65.90	16.50			
North Liberty	80.35	62.21		41.10	194.69	14.00
Payne	120.20	75.01	5.00		1126.00	170.00
Peru	229.83	113.28	48.00	15.00	394.98	2.00
Plymouth	75.89	53.70	75.26	75.92	40.00	55.00
Roseburg	5.00		5.79		5.00	
Summitville	6.24	5.60			20.00	
Santa Fe	51.90	55.78	58.00	44.75	93.50	
Shelbvville	73.75	15.75	25.00	5.00	28.00	12.00
Sheridan	211.13	16.00		2.10	22.50	
South Bend	100.95	55.00	35.00	20.05	51.47	25.00
Center	6.00		1.00			
Tiontown	13.00	6.00	26.00			
Wabash	108.62	16.00	55.00	26.00	56.00	1010.00
Warren	195.50	70.50	30.00	8.00	185.00	50.00
Westfield	161.00	20.96	19.00	34.00	97.50	5.00
Waveland	70.82	28.00	20.50	25.40	52.50	25.00
Whitehall	4.25	20.85	40.00	5.00	10.00	
Totals	\$6319.82	\$1943.85	\$1296.13	\$756.69	\$5477.30	\$3822.85

THE INDIANA CONFERENCE

STATISTICAL REPORT—Continued.

	Minute Fund	Conference S. S. Apportionment	Superannuated Min. Fund	Gen. Conf. Del. Fund	Other Benevolent Objects	Total for Benevolences
Albion	\$3.70	\$12.00	\$12.84		\$224.00	\$680.79
Anderson	1.05	7.30	1.00	\$.60	124.78	226.99
Atlanta						8.50
Blue River	3.75	8.00	25.25	9.10	237.20	1392.45
Bluffton	1.50	4.00				8.75
Boxley	3.60	21.50	11.45		233.26	1017.33
Bryant	1.80	9.15	6.31			484.31
Clay City	1.00		2.00		25.00	47.65
Elwood	1.05	10.00	2.55		25.00	477.02
Fairmount	3.00	19.22	13.33		87.10	2554.08
*Fowler75	3.06	2.17		19.85	97.11
Fowlerton45	3.03	2.00	1.00	17.67	49.66
Fountain City	1.50	3.00	5.00		7.92	85.72
Fishersburg	2.70	2.25	2.00	2.00	30.00	113.39
Greensboro	1.00	4.80	.30		45.60	81.16
Greentown	2.50	8.50	5.00		103.50	431.33
Greenwood	1.00	2.00	1.50	1.25		22.08
Gunkle Zion	1.50	6.15	3.60	5.00	77.11	349.05
Hamlet	3.45	12.00	12.27	8.00		441.13
Huntington	3.15		2.00		45.00	389.08
Indianapolis	1.15		2.50		67.29	200.51
*Kirklin	1.00	6.00	1.80		10.00	244.08
Kokomo90		5.00			28.17
Larwill	2.70	10.00	7.72		92.48	516.79
Laketon	1.00	4.00	3.00		6.92	185.93
Lebanon						
Louisville						
*Lewis Creek	3.75	20.17	12.00			745.70
*Mt. Etna	2.70	18.10			88.00	665.01
Mt. Zion, Howard Co.	1.35	2.51	1.45			280.89
Mt. Zion, Henry Co.	1.80		9.50		4.00	243.86
Mt. Olive	1.35	3.50	2.19		35.00	169.19
Marion, South	2.70	15.00	3.25		74.00	1744.68
Marion, Nelson Street	3.00	19.20				833.28
Marion, W. 8th St.	1.05	4.50	3.65		48.95	259.26
Miami						
New Castle	2.20	10.00	5.63		10.00	170.57
North Liberty	1.80	3.20	5.31		10.00	412.66
Payne	3.85	13.50	25.50		120.00	1659.06
Peru	3.75	22.30	8.90	5.10	176.79	1019.93
Plymouth	2.40	6.00	9.00	5.00	59.66	457.73
Roseburg30				2.00	18.09
Summitville	1.00	2.00			16.90	51.47
Santa Fe	2.70	9.80	9.50		124.00	449.93
Shelbyville	1.20	7.00	5.00	3.00	124.00	299.70
Sheridan	1.00	14.00	4.00		33.00	303.73
South Bend90	7.20	3.37		114.10	413.04
Center	1.00					8.00
Thorntown		3.00				48.00
Wabash	2.50	23.00	5.00	1.00	310.00	1613.12
Warren	4.00	30.00	10.00	7.50	50.00	640.50
Westfield	2.25	3.00			177.00	519.71
Waveland	1.00	3.30	7.05		26.00	259.57
Whitehall	2.00		7.00		50.00	139.10
Totals	\$96.75	\$396.30	\$267.89	\$48.55	\$3132.98	\$23559.11

WESLEYAN METHODIST CONNECTION

STATISTICAL REPORT—Continued.

	Total for Pastors	Total for Church	Total for Benevolences	Total for All Purposes
Albion	\$1098.00	\$772.41	\$680.79	\$2551.20
Anderson	650.19	446.15	226.99	1323.33
Atlanta	66.25	50.12	8.50	134.87
Blue River	1270.00	556.00	1392.45	3218.45
Bluffton	260.47	499.20	.75	768.42
Boxley	1318.88	1161.82	1017.33	3498.03
Bryant	1158.27	697.89	484.31	2340.47
Clay City	193.18	183.44	47.65	424.27
Elwood	1474.00	647.22	477.02	2598.24
Fairmount	1255.00	1471.46	2554.08	5280.54
*Fowler	564.20	120.54	97.11	781.85
Fowlerton	206.50	368.43	49.66	624.59
Fountain City	220.00	208.25	85.72	513.97
Fishersburg	717.00	441.00	113.39	1271.39
Greensboro	407.00	466.35	81.16	954.51
Greentown	1246.00	542.18	431.33	2219.51
Greenwood	189.35	106.60	22.08	318.03
Gunkle Zion	837.00	246.05	349.05	1432.10
Hiramlet	1319.14	700.49	441.13	2460.76
Huntington	1346.00	589.00	389.08	2324.08
Indianapolis	1286.01	487.10	200.51	1973.62
*Kirklin	871.00	273.28	244.08	1388.36
Kokomo	472.12	2831.46	28.17	3331.75
Larwill	1272.10	652.73	516.79	2441.62
Laketon	708.16	175.46	185.93	1069.55
Lebanon				
Louisville				
*Lewis Creek	1317.90	1049.35	745.70	3112.95
*Mt. Etna	1236.00	1378.91	665.01	3279.92
Mt. Zion, Howard County	553.58	184.67	280.89	1019.14
Mt. Zion, Henry County	827.00	396.86	243.86	1467.72
Mt. Olive	333.56	377.61	169.19	880.36
Marion, South	1745.00	1106.00	1744.68	4595.68
Marion, Nelson Street	1603.65	1716.73	833.28	4153.66
Marion, West 8th Street	850.00	307.54	259.26	1416.80
Miami				
New Castle	1448.68	9711.26	170.57	11330.51
North Liberty	996.72	466.00	412.66	1875.38
Payne	1377.91	1034.49	1659.06	4071.46
Peru	1503.18	987.29	1019.93	3510.40
Plymouth	1266.50	801.23	457.73	2525.46
Roseburg	175.68	109.60	18.09	303.37
Summitville	291.08	314.67	51.74	657.49
Santa Fe	906.50	389.86	449.93	1746.29
Shelbyville	578.84	429.80	299.70	1308.34
Sheridan	597.90	391.87	303.73	1293.56
South Bend	1256.73	682.30	413.04	2352.07
Center	96.90	29.50	8.00	134.46
Thorntown	380.21	213.50	48.00	641.71
Wabash	1685.00	1717.00	1613.12	5015.12
Warren	1545.00	988.00	640.50	3173.50
Westfield	1400.84	542.00	519.71	2462.55
Waveland	360.00	202.01	259.57	821.58
Whitehall	399.14	856.71	139.10	1394.95
Totals	\$45139.32	\$41079.39	\$23559.11	\$109777.82

THE INDIANA CONFERENCE

TABLE OF DISTRIBUTION OF BENEVOLENCE

	Sabbath Schools	Y. M. W. B.	W. H. & F. M. S.	Other Sources	Total
Foreign Missions	\$188.51	\$3575.21	\$1223.01	\$1200.88	\$6187.61
Home Missions	1284.01	4.50	406.69	140.76	1835.96
Specially For Africa	39.25	84.85	25.00	21.00	170.10
Specially for India	20.23	13.77		109.03	177.03
Conference Missions	15.79	31.50		1163.84	1211.13
Church Extension				732.66	732.66
Gen. Conf. Del. Fund			5.00	43.55	48.55
Connectional Education	75.18	300.21	160.53	4921.38	5457.30
College Building Fund	85.00		26.25	3734.65	3845.90
Minute Fund				103.00	103.00
Conference S. S. Apportionment	294.17			95.83	390.00
Superannuated Minister's Fund				391.67	391.67
Other Benevolent Objects	406.30	11.50	313.15	2277.35	3008.20
Totals	\$2408.44	\$4021.54	\$2193.63	\$14935.50	\$23559.11

LIST OF QUARTERLY MEETINGS FOR 1921 AND 1922.

First Quarter.

Date	F. R. Eddy	W. L. Thompson	C. S. Smith
Sept. 10-11	Warren	Greentown & Hamlet	Mt. Etna
Sept. 17-18	Larwill	Whitehall	Elwood
Sept. 24-25	Summitville & Fountain City	Albion	Bluffton & Hartford City
Oct. 1-2	Mt. Zion & Greensboro	Boxley	Payne
Oct. 8-9	Plymouth	Santa Fe	Bryant
Oct. 15-16	New Castle	Wabash	Mt. Zion & Mt. Olive
Oct. 22-23	Peru	Miami & Kokomo	Blue River
Oct. 29-30	Shelbville & Indianapolis	Lewis Creek	Kirklin & Sheridan
Nov. 5-6	South Bend	Fishersburg & Anderson	Fairmount
Nov. 12-13	Waveland & Thorntown	North Liberty	Roseburg & West Marion
Nov. 19-20	Nelson St., Marion	Westfield & Cicero	Fowler & Gunkle Zion
Nov. 26-27	Louisville, Ky.	Huntington & Laketon	Marion, South

WESLEYAN METHODIST CONNECTION

LIST OF QUARTERLY MEETINGS FOR 1921 AND 1922.

Second Quarter.

Date	F. R. Eddy	W. L. Thompson	C. S. Smith
Dec. 3-4	Hamlet & Greentown	Mt. Etna	Warren
Dec. 10-11	Whitehall	Elwood	Larwill
Dec. 17-18	Albion	Hartford City & Bluffton	Mountain City & Summitville
Dec. 24-25	Boxley	Payne	Greensboro & Mt. Zion
Dec. 31 & Jan. 1	Santa Fe	Bryant	Plymouth
Jan. 7-8	Wabash	Mt. Olive & Mt. Zion	New Castle
Jan. 14-15	Miami & Kokomo	Blue River	Peru
Jan. 21-22	Lewis Creek	Sheridan & Kirklin	Indianapolis & Shelbyville
Jan. 28-29	Anderson & Fishersburg	Fairmount	South Bend
Feb. 4-5	North Liberty	West Marion & Roseburg	Thorntown & Waveland
Feb. 11-12	Westfield & Cicero	Gunkle Zion & Fowler	Marion, Nelson St.
Feb. 18-19	Huntington & Laketon	Marion, South	Louisville, Ky.

Third Quarter.

Feb. 25-26	Mt. Etna	Warren	Hamlet & Greentown
Mar. 4-5	Elwood	Larwill	Whitehall
Mar. 11-12	Bluffton & Hartford City	Summitville & Fountain City	Albion
Mar. 18-19	Payne	Mt. Zion & Greensboro	Boxley
Mar. 25-26	Bryant	Plymouth	Santa Fe
Apr. 1-2	Mt. Zion & Mt. Olive	New Castle	Wabash
Apr. 8-9	Blue River	Peru	Kokomo & Maimi
Apr. 15-16	Kirklin & Sheridan	Shelbyville & Indianapolis	Lewis Creek
Apr. 22-23	Fairmount	South Bend	Anderson & Fishersburg
Apr. 29 30	Roseburg & West Marion	Waveland and Thorntown	North Liberty
May 6-7	Fowler & Gunkle Zion	Marion, Nelson St.	Cicero & Westfield
May 13-14	Marion, South	Louisville, Ky.	Laketon & Huntington

Fourth Quarter.

May 20-21	Warren	Greentown & Hamlet	Mt. Etna
May 27-28	Larwill	Whitehall	Elwood
June 3-4	Fountain City & Summitville	Albion	Hartford City & Bluffton
June 10-11	Greensboro & Mt. Zion	Boxley	Payne
June 17-18	Plymouth	Santa Fe	Bryant
June 24-25	New Castle	Wabash	Mt. Olive & Mt. Zion
July 1-2	Peru	Miami & Kokomo	Blue River
July 8-9	Indianapolis & Shelbyville	Lewis Creek	Sheridan & Kirklin
July 15-16	South Bend	Fishersburg & Anderson	Fairmount
July 22-23	Thorntown & Waveland	North Liberty	West Marion & Roseburg
July 29-30	Marion, Nelson St.	Westfield & Cicero	Gunkle Zion & Fowler
Aug. 5-6	Louisville, Ky.	Huntington & Laketon	Marion, South

CONDENSED MINUTES OF THE THIRTY- SECOND ANNUAL SESSION OF THE WOMAN'S HOME AND FOREIGN MISSIONARY SOCIETY.

CONFERENCE OFFICERS.

President—Mrs. Auvie Northam, Sheridan, Indiana.

Vice-President—Mrs. Mary Smith, Fairmount, Indiana.

Secretary—Miss Mabel Rich, Laotto, Indiana.

Treasurer—Mrs. Bessie Baker, Sheridan, Indiana.

Organizer—Mrs. Ida Hopkins, Kokomo, Indiana.

Y. M. W. B. Superintendent and Organizer—Miss Almy Smiley,
Fairmount, Indiana.

Statistical Secretaries—Mrs. Emma Hawkins, Larwill, Indiana;
Mrs. Etta Peters, 906 Spencer Ave., Marion, Indiana.

SPECIAL DAYS TO BE OBSERVED.

Second Annual Educational Harvest Day—Third Friday in
October, Marion, Indiana.

Y. M. W. B. Educational Rally Day—Last of November.

Annual Easter Offering for Home Missions.

THE INDIANA CONFERENCE

SOCIETY ROLL.

Members—Place.	Superintendent and Address.	Amount.
8 Albion—Effie Shue, Kimmel, Ind., R. R.	Anderson—Brittie Rector, Anderson, Ind., 1208 Hendrix St.	\$ 15.50
21 Bakers Corner—Cora Foulke, Sheridan, Indiana		115.70
14 Beaver Creek—Gladys Barr, North Liberty, Ind.		46.20
13 Bryant—Ruby Ebersole, Bryant, Ind.		101.02
15 Bethel—Ada Litzenberg, Woodburn, Ind.		81.00
13 Boxley—Nellie Chamberlain, Sheridan, Ind.		74.32
21 Blue River—Eva Miller, Arlington, Ind.		156.91
6 Carthage—Reba Rigsbee, Carthage, Ind.		10.05
6 Cicero—Ina Kimball, Cicero, Ind.		7.25
13 Davis—Hattie Liles, Hamlet, Ind.		33.55
12 Elwood—Mary Ebert, Elwood, N. "A" St., Ind.		47.41
40 Fairmount—Anna K. Folger, Fairmount, Ind.		198.45
3 Fishersburg—Lydia Abney, Lapel, Ind.		40.00
5 Fowler—Nora Copas, Fowler, Ind.		32.10
16 Gleaners—Aurie Bodenhorn, Lafayette, Ind., R. R. No. 6,		28.35
16 Hamlet—Ethel Thomas, Hamlet, Ind.		55.41
14 Huntington—Allie Rainey, Huntington, Ind.		35.83
3 Hamilton—Maud Jarrett, Anderson, Ind., R. R. No. 6...		243.23
13 Indianapolis—Emma Bemis, Indianapolis, Ind., 39 N. Oxford St.		75.04
5 Kirklin—Lydia Murphy, Kirklin, Ind.		54.00
9 Laotto—Mabel Rich, Laotto, Ind.		34.00
13 Laketon—Elnora Foshee, Laketon, Ind.		62.91
12 Lancaster—Lizzie Williams, Huntington, Ind., R. R. 6.		52.38
17 Lewis Creek—Susie Drake, Lewis Creek, Ind.		174.85
17 Larwill—Zora Pletcher, Larwill, Ind.		43.20
11 Marion Eighth—Nellie Sharon, Marion, Ind., 2625 W. 9th St.		82.00
45 Marion South—Belle Shelley, Marion, Ind.		260.56
30 Marion Nelson St.—Etta Peters, Marion, Ind., 906 Spencer Ave.		93.86
9 Monument City—Clara Heiney, Andrews, Ind., R. R. 1..		9.25
8 Mt. Zion (Howard Co.)—Edith Kirkendall, Greentown, Ind., R. R. 4.		66.13

WESLEYAN METHODIST CONNECTION

SOCIETY ROLL.—Continued.

Members—Place.	Superintendent and Address.	Amount.
8 Mt. Zion (Henry Co.)—Eva Brenneman, New Castle, Ind., R. R. 8.		37.86
3 Mt. Calvary—Ella Bland, Bloomfield, Ind., R. R. 4. ..		4.25
31 New Castle—Mary Williams, New Castle, Ind., 601 W. Spring St.		98.69
16 Peru E. W.—Jennie Boldinan, Peru, Ind., Smith and Harrison Sts.		51.20
18 Peru, Flax Hill—Goldie McCallister, Peru, Ind., R. R. 6, ..		184.88
18 Plymouth—Janette Shatford, Plymouth, Ind.		55.42
17 Portland—Mildred Roll, Portland, Ind.		5.40
8 Pleasant Grove—Theresa Bakehorn, Amboy, Ind., R. R. 1		14.75
24 Plummerville—Mattie King, Van Buren, Ind., R. R. 3. ..		30.80
14 Roberts Chapel—Christiana Matthews, Atlanta, Ind. R. R.		122.76
19 Sheridan—Dora Norman, Sheridan, Ind.		160.34
17 Shelbyville—Flora Fately, Shelbyville, Ind., Cole and Scott Sts.		35.75
9 Star—Laverne Geyer, Lakeville, Ind.		42.74
12 Waveland—Mary Ward, Rochville, Ind.		65.00
1 Whitehall—Mollie Pratt, Bloomington, Ind., R. R. 1... ..		1.00
9 Warsaw—Evadna Denny, Warsaw, Ind., W. Center St. ..		20.28
11 Wesley Chapel—Halsie Hoyer, St. Paul, Ind.		43.75
20 Westfield—Mollie Powell, Westfield, Ind.		79.66
23 Warren—Emma Shultz, Warren, Ind.		138.71
15 Wabash—Mary Spitler, Wabash, Ind.		31.80

A total in membership of 805—Active and Honorary.

Journal of Business Proceedings.

Mrs. Auvie Northam presided.

Order of business—Devotional, singing, organization, reading minutes and roll call, with 64 present at first meeting.

An enthusiastic experience meeting was held.

At the second meeting the following committees were appointed:

P. O. Addresses—Ida Payne.

Memorials—India Payne, Setta Caldwell.

Courtesies—Aura Bodenhorn.

Decorating—Mossalene Swain, Zella Archer.

Music—Mabel Cory.

Information—Edith Eddy.

Press Reporters—Wesleyan Missionary, Aura Bodenhorn; Wesleyan Methodist, Cressida Enyeart.

Wesleyan Missionary Solicitors—Mossalene Swain, Clara Mow, Ella Macy, Edith Eddy, Lydia Murphy, Mary Smith, Cressida Enyeart, Ida Payne, Lucinda Smith, Etta Peters.

The officers were elected at the third meeting.

The following resolution was passed:

That we request each local Society to take an offering to be known as the "Wesleyan Missionary Fund" to be used when a deficit occurs in publication of the magazine.

During the session the following persons were introduced and addressed the meeting: Mrs. Anna K. Folger, Vice-President of General Society; Rev. and Mrs. Walter Jennings, returned missionaries from Africa; Rev. F. A. Butterfield, Editor of the Wesleyan Methodist; Dr. H. C. Bedford, President of Marion College; Rev. and Mrs. Carmen Decker, Mrs. Jackson, prospective Missionaries to Africa; Mrs. Grace Overton, a visitor from a sister church.

Letters of greeting were read from Miss Ina Gaines relative to the Blue Ridge Mountain Work; also Miss Flora Pitts, Missionary in India.

Letters of greeting were ordered sent to each mission station, home and foreign, also to Mrs. Butterfield, Editor of the Missionary Magazine.

Friday morning was given to Mrs. Anna K. Folger to conduct the Institute work.

Saturday morning the superintendent of the Y. M. W. B. had

WESLEYAN METHODIST CONNECTION

charge of the program, at which time Rev. and Mrs. Walter Jennings and Rev. C. C. Decker spoke. Special music was given.

The public program on Friday evening was good and very impressive. An offering of \$650.00 was taken for Rev. and Mrs. C. C. Decker.

PRESIDENT'S OFFICIAL REPORT.

Have received and written some letters to the missionaries on the field.

Kept up the correspondence relative to the work of the Indiana Conference.

Arranged for and attended the First Annual Educational Harvest Day for Marion College.

Made two trips to Marion to help committee arrange Convention work and discuss the situation with a number of Indiana people.

Attended two District Conventions.

Have written several messages and notices to Church papers. Expenses for year, \$30.00, received \$28.00.

ORGANIZER'S OFFICIAL REPORT.

Organized four (4) new Societies, and spent three days in the southern part of state, where I organized Mt. Calvary.

Visited four (4) Local Societies.

Attended three (3) District Conventions.

Went to Marion at call of President for committee work.

TREASURER'S REPORT.

Amount received in cash and receipts \$3554.98

Y. M. W. B. REPORT.

Amount received in cash and receipts \$3944.62

A special offering for the education of children of

Indiana Missionaries 35.00

Total \$7533.62

The Banners both for the W. H. & F. M. S. and the Y. M. W. B. were given to the Fairmount Societies.

THE INDIANA CONFERENCE

Next year the W. H. & F. M. S. will give two Banners, one for the most cash, and one for cash and receipts.

We desire each local society to bring a banner or pennant to the Conference each year.

COMMITTEE ON MEMORIALS REPORT.

Death has claimed the following named persons during the past year from the W. H. & F. M. S. and Y. M. W. B. ranks: Rev. B. L. Couch, Mrs. Mundy, Elisha McClintoc, Junia Kollor, Ella Rouse, Eva Deitrich, Linder Gillam, Elsie Eveline Carter and James Kirkendall.

We thank God that the number is not so great as last year.

We recommend:

1. The holding of a Y. M. W. B. and W. H. & F. M. Society Convention in each district.
 2. The arrangement of these conventions to be under the supervision of the Organizer of the W. H. & F. M. Society and Conference Director of the Y. M. W. B. as they shall confer with the president in said districts.
 3. That these Conventions be held upon consecutive dates, each being allotted the time from 2 p. m. the first afternoon, continuing until the evening of the second day.
 4. The expenses of the workers to be met by the Conventions, an offering to be taken at the close of the meeting.
 5. These Conventions shall be held beginning with the first of October and closing with District No. 4 in connection with the Educational Harvest Day at Marion College, the third Friday in October.
-

COMMITTEE ON RE-DISTRICTING.

The Committee on Re-Districting for Convention work offers the following report:

District No. 1.—Hamilton, Fishersburg, Grant City, Mt. Zion, (Henry Co.,) New Castle, Anderson.

District No. 2.—Sheridan, Bakers Corner, Westfield, Boxley, Roberts Chapel, Cicero, Kirklin, Waveland, Deming.

WESLEYAN METHODIST CONNECTION

District No. 3.—Blue River, Lewis Creek, Carthage, Shelbyville, Hope, Wesley Chapel, Indianapolis, Belmont St., Carmel, Mt. Calvary.

District No. 4.—Nelson St. Marion, South Marion, West Marion, Wabash, Laketon, Summitville, Fowlerton, Fairmount.

District No. 5.—Elwood, Kokomo, Fowler, Gunkle Zion, Mt. Zion, (Howard Co.,) Peru, (both churches), Santa Fe, Pleasant Grove, (Santa Fe Circuit), Mt. Olive, Plevna, Greentown.

District No. 6.—South Bend, Hamlet, Davis, Starr, Beaver Creek, Warsaw, Larwill, Plymouth.

District No. 7.—Bethel, Bryant, Laotto, Albion, Portland, Fountain City, Greens Chapel, Edgerton, Pleasant Grove, (Bryant Circuit).

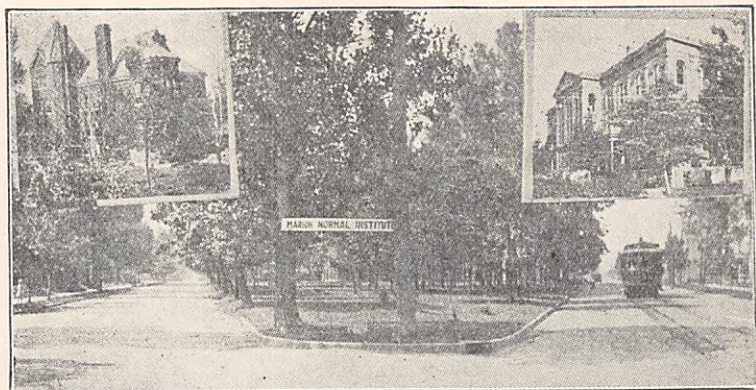
District No. 8.—Warren, Plimmers Chapel, Mt. Etna, Lancaster, Huntington, Monument City, Salem.

MARION COLLEGE

MARION, INDIANA

Strong Faculty of Godly Men Holding Degrees
From the Best Colleges and Universities.

AIM: SCHOLARSHIP AND SPIRITUALITY.
NO CARDS, DANCES, SORORITIES.



One View of Campus. Buildings Among the Trees.