

*Official Copy*

**MINUTES**  
OF THE  
THIRTY-FIRST ANNUAL SESSION  
OF THE  
**ALABAMA CONFERENCE**  
OF THE  
**WESLEYAN METHODIST CONNECTION**  
**OR CHURCH OF AMERICA**

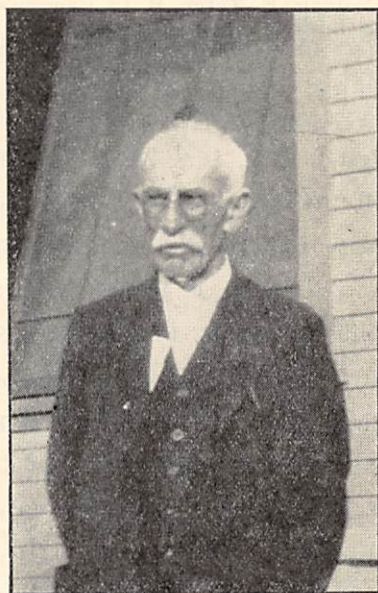
HELD AT  
TALLADEGA, ALABAMA  
OCTOBER 16-19, 1940



E. L. SHIGLEY.....	PRESIDENT
H. A. JOHNSON.....	VICE-PRESIDENT
W. E. HOBSON, JR.....	SECRETARY

---

## In Memoriam



**REV. RUFUS A. FRENCH**

**August 25, 1852-September 5, 1940**

Graduate University of Kansas Law School. Practiced the Law Profession for 15 years. Pastor and Evangelist in the Kansas Conference of the Wesleyan Methodist Church for 15 years, the Alabama Conference 14 years, the Oregon Conference 5 years, the California Conference 8 years. His last pastorate was the Fairview church, Cottondale, Ala. He retired from pastoral work in 1937 but remained active in church work, teaching a Bible class in Eleanor Memorial Bible School, Birmingham, Ala., until a few days before his death. He gave 45 years of his life in active church work in his church.

---



## SESSIONS OF CONFERENCE

(Date, Place, President, Vice-President, Secretary, Members.)

Organized—July 30, 1910, Friendship, E. Teter, P. C. Ramsey,  
W. E. Hobson, Jr., 238

- 1 Nov. 3, 1910, Ada Chapel, E. Teter, P. C. Ramsey, W. E. Hobson, Jr., 242
- 2 Nov. 2, 1911, West Blocton, E. Teter, P. C. Ramsey, W. E. Hobson, Jr., 244
- 3 Nov. 7, 1912, Ada Chapel, E. Teter, P. C. Ramsey, E. R. Tubb, 256
- 4 Nov. 6, 1913, Mt. Ivah, E. Teter, P. C. Ramsey, E. R. Tubb, 286
- 5 Nov. 19 1914, Friendship, E. Teter, J. A. Wood, E. R. Tubb, 356
- 6 Nov. 4, 1915, West Blocton, E. Teter, J. A. Wood, W. E. Hobson, Jr., 585
- 7 Nov. 2, 1916, Pell City, E. Teter, J. A. Wood, W. E. Hobson, Jr., 592
- 8 Nov. 8, 1917, Tuscaloosa, E. Teter, R. A. French, W. E. Hobson, Jr., 575
- 9 Nov. 6, 1918, West Blocton, J. A. Wood, R. A. French, W. E. Hobson, Jr., 538
- 10 Nov. 6, 1919, Pell City, R. A. French, J. A. S. Anderson, W. E. Hobson, Jr., 497
- 11 Nov. 2, 1920, Mentone, W. R. French, R. E. Snipes, W. E. Hobson, Jr., 494
- 12 Oct. 26, 1921, Tuscaloosa, W. R. French, R. E. Snipes, W. E. Hobson, Jr., 485
- 13 Nov. 1, 1922, Talladega, W. R. French, R. E. Snipes, W. E. Hobson, Jr., 553
- 14 Oct. 30, 1923, Brent, R. E. Snipes, E. M. Thompson, W. E. Hobson, Jr., 614
- 15 Oct. 29, 1924, Birmingham, R. E. Snipes, H. R. French, W. E. Hobson, Jr., 592
- 16 Oct. 28, 1925, Mentone, R. E. Snipes, E. L. Henderson, W. E. Hobson, Jr., 568
- 17 Nov. 10, 1926, Tuscaloosa, R. E. Snipes, H. A. Johnson, W. E. Hobson, Jr., 627
- 18 Nov. 1, 1927, Bessemer, R. E. Snipes, H. A. Johnson, W. E. Hobson, Jr., 596
- 19 Nov. 6, 1928, Pell City, R. E. Snipes, H. A. Johnson, W. E. Hobson, Jr., 767
- 20 Oct. 16, 1929, Talladega, R. E. Snipes, H. A. Johnson, W. E. Hobson, Jr., 767
- 21 Oct. 21, 1930, Tuscaloosa, R. E. Snipes, H. A. Johnson, W. E. Hobson, Jr., 909
- 22 Oct. 21, 1931, Talladega, R. E. Snipes, E. L. Shigley, W. E. Hobson, Jr., 962
- 23 Oct. 18, 1932, Tuscaloosa, R. E. Snipes, E. L. Shigley, W. E. Hobson, Jr., 979
- 24 Oct. 18, 1933, Mentone, R. E. Snipes, E. L. Shigley, W. E. Hobson, Jr., 1039
- 25 Oct. 17, 1934, Tarrant, R. E. Snipes, E. L. Shigley, W. E. Hobson, Jr., 1079
- 27 Oct. 20, 1936, Birmingham, E. L. Shigley, J. L. Averett, W. E. Hobson, Jr., 1095
- 28 Oct. 19, 1937, Birmingham, E. L. Shigley, H. A. Johnson, W. E. Hobson, Jr., 1045
- 29 Oct. 18, 1938, Brent, E. L. Shirley, H. A. Johnson, W. E. Hobson, Jr., 1027
- 30 Oct. 18, 1939, Tuscaloosa, E. L. Shigley, H. A. Johnson, W. E. Hobson, Jr., 1107
- 31 Oct. 16, 1940, Talladega, E. L. Shigley, Paul E. Allred, W. E. Hobson, Jr., 1122

32. July 22, 1941, Camp Eden 2

# MINUTES

## ALABAMA CONFERENCE

### OFFICIALS

- ✓ President—Rev. E. L. Shigley, Brent, Ala.
- ✓ Vice-President—Rev. Paul E. Allred, 2409 20th St., Tuscaloosa, Ala.
- ✓ Secretary—W. E. Hobson, Jr., 1429 23rd Ave., Tuscaloosa, Ala.
- ✓ Treasurer—O. B. Shows, R. F. D. No. 2, Tuscaloosa, Ala.
- ✓ President's Advisory Board—Paul E. Allred, W. H. Tillman.
- ✓ Legal Advisor—W. E. Hobson, Jr.
- ✓ Trustees—H. A. Johnson, term expires 1945; H. F. Pair, term expires 1944; R. E. Snipes, term expires 1943; P. S. Sprueill, term expires 1942; W. E. Hobson, Jr., term expires 1941.

### COMMITTEES

- ✓ Judiciary Committee—H. F. Pair, H. A. Johnson, W. F. Bunnell, M. A. Medders.
- ✓ Itinerancy and Elder's Orders—Paul E. Allred, 4 years; R. E. Snipes, 3 years; E. L. Shigley, 2 years; C. H. Pickel, 1 year.
- ✓ Auditing Committee—E. L. Shigley, Jr., Fred Brazier.
- ✓ Vavancies—H. R. French, C. H. Pickel, E. T. Meacham, O. B. Shows, L. W. Moore.
- Conventions—E. L. Shigley, Mrs. Florice Allred, T. L. Shirk.
- ✓ Sunday School Secretary—R. M. Evans.
- ✓ Sunday School Board—R. M. Evans, W. E. Hobson, Jr., T. L. Shirk.
- Camp-Meeting Committee—President, R. E. Snipes, First Vice-President, H. F. Pair; Second Vice-President, E. L. Shigley; Third Vice-President, Mrs. C. D. Robertson; Secretary-Treasurer, Paul E. Allred.
- ✓ Missionary Board—E. L. Shigley, O. B. Shows, Mrs. Florice Allred.
- ✓ Memorials—E. L. Shigley, J. L. Averett, R. E. Snipes.
- ✓ Tithing Secretary—Paul E. Allred.
- ✓ Local Board of Managers Central College—E. L. Shigley.

### CONFERENCE ROLL

#### Elders

Allred, Paul E., 2409 20th St.	Tuscaloosa, Ala.
Averett, J. L., 219 Spring Street	Talladega, Ala.
Bamburg, L. A., R. F. D. No. 2	Greensboro, Ala.
Bunnell, W. F., R. F. D. No. 5	Birmingham, Ala.
✓ Elam, Reland, Star Route	Jamestown, Ky.
French, H. Robb, R. F. D. No. 5, Box 250	Birmingham, Ala.
French, W. R., R. F. D. No. 5, Box 250	Birmingham, Ala.
✓ Johnson, H. A.	Mentone, Ala.
Meacham, E. T., R. F. D. No. 1, Box 5	Irondale, Ala.
Medders, M. A., R. F. D. No. 1	Marion, Ala.
Pair, H. F., 107 North 54th Street	Birmingham, Ala.
Pickel, C. H., 4104 Poplar St., C. P.	Birmingham, Ala.
Preston, A. D., 2100 Wesley Avenue	Birmingham, Ala.
Shigley, E. L.	Brent, Ala.
Snipes, R. E., P. O. Box 54	Peel City, Ala.
✓ Spear, Mrs. Maggie Jean, R. F. D. No. 1	Eden, Ala.



### Licentiates On The Stationed List

Brazier, Fred, 306 West Street.....	Talladega, Ala.
Caddell, Eugene, R. F. D. No. 2.....	Brent, Ala.
Clark, Harry D., R. F. D. No. 2.....	Horton, Ala.
Crowe, C. W., R. F. D. No. 1.....	Heiberger, Ala.
Crowe, F. E., R. F. D. No. 1.....	Menlo, Ga.
Crowe, Finn, Jr.,.....	West Blocton, Ala.
Davis, J. L.....	Stanton, Ala.
Hill, W. B.....	Stanton, Ala.
Hoggie, N. C., R. F. D. No. 1, Box 3-A.....	Irondale, Ala.
McInnish, J. D. c/o Alabama Pipe Co.....	Talladega, Ala.
Phillips, Boss, 28 Cherokee St.....	Sylacauga, Ala.
Pointer, E. J., R. F. D. No. 3.....	Anniston, Ala.
Shigley, E. L., Jr., R. F. D. No. 1.....	West Blocton, Ala.
Shirk, Thos. L., R. F. D., No. 1.....	Cottondale, Ala.
Sims, J. Robt. c/o Fire Department.....	Talladega, Ala.

### Delegates

J. L. Batterson, Miss Venola Cook, J. L. Davis, Henry Endfinger, Mrs. W. O. Finnen, Miss Frances French, Mrs. D. J. Gibbs, Miss Evelyn Golden, Mrs. R. C. Harvey, Mrs. Estelle Harville, Miss Mittye Head, D. L. Jones, Mrs. J. M. Malone, J. W. Medders, L. W. Moore, J. D. Muse, Mrs. H. F. Pair, Mrs. Ethel Ray, Mrs. C. D. Robertson, O. E. Robinson, O. B. Shows, Mrs. L. H. Snipes, Mrs. W. H. Tillman, Mrs. Della Watts, O. K. Williams, J. H. Winters.

### DAILY PROCEEDINGS

The Alabama Annual Conference of the Wesleyan Methodist Church convened for its thirty-first annual session at Talladega, Ala., October 16, 1940 at 10:00 a. m., after devotional services the President invited Rev. Roy S. Nicholson, Home Missionary Secretary and Connectional Representative to preside as chairman during the session, which he did in a very acceptable manner.

The roll of Elders and Conference Preachers was called, with thirteen answering the roll call.

M. A. Medders and Mrs. George Ray were elected a committee on Credentials. Credentials were presented, read and sixteen lay delegates were enrolled and seated in the body.

The President read the names of those appointed as chairman of the various session committees.

The Conference Bar was fixed to include the platform, four seats in front and five on each side of the building.

The committee on Courtesies presented Rev. J. A. Wood of Gastonia, N. C., and D. L. Jones of Macon, Ga., and Harry D. Clark of the South Georgia Conference. They were by vote granted honorary privileges within the conference bar, with any others that may be so introduced.

Committee on Ministerial Characters was elected as follows: E. L. Shigley, H. F. Pair and Mrs. W. H. Tillman.

A Nominating Committee was elected as follows: R. E. Snipes, Paul E. Allred and Miss Frances French.

The time of meeting was fixed to meet at 8:30 a. m. Adjourn by motion. Meet at 1:30 p. m. and adjourn by motion.

By vote it was fixed the order of the day to elect the Conference Officials Thursday morning immediately after the roll call.

It was made the Order of the Day for Rev. J. A. Wood to speak to the conference at 2:30 p. m., presenting the Educational interests at Central College.

The President read the annual report of his official activities during the year, which was adopted as read.

By motion all churches were instructed to vote if not already done so



and make report to the conference secretary within sixty days the results of the vote on the proposed amendments to the Discipline. ✓

D. L. Jones spoke to the conference relative to the work of the Hephzibah Home and its needs. ✓

On motion adjourned.

### WEDNESDAY—AFTERNOON MEETING

Devotional service were conducted by M. A. Medders.

Roll called, minutes read and approved.

Committee on Credentials made a supplemental report and six names were added to the roll of lay delegates. ✓

Committee on Nominations made a partial report. ✓

A letter of transfer for Rev. Harry D. Clark from the South Georgia Conference was read by the President. By motion and vote he was accepted and referred to the Committee on Itinerancy and Elder's Orders.

The roll of pastors was read and the following responded with the reading of pastoral reports, Paul E. Allred, Mrs. Florice Allred, T. L. Shirk, and H. F. Pair. By motion the character of C. H. Pickel was passed pending the reading of his report. ✓

On motion adjourned to 2:30 p. m.

Called to order at 2:30 p. m. by the chairman. Rev. J. A. Wood spoke relative to the building of a Girl's Dormitory at Central College and took offerings and pledges for the building fund.

On motion adjourned.

### THURSDAY—MORNING MEETING

Devotions were conducted by Harry D. Clark.

Roll called, minutes read and approved.

Committee on Credentials made a supplemental report and three names were added to the roll of lay delegates.

The Order of the Day was called for the election of Conference Officials. Fred Brazier, C. W. Crowe and W. B. Hill were appointed as tellers. The results of the election were as follows:

President—E. L. Shigley.

Vice-President—Paul E. Allred.

Secretary—W. E. Hobson, Jr.

Treasurer—O. B. Shows.

Trustee for a term of five years—H. A. Johnson.

On nomination by the President Paul E. Allred and W. H. Tillman were elected the President's Advisory Board.

The Committee on Nominations reported the following nominations for the standing committees which was adopted and they were elected as follows:

Judiciary Committee—H. F. Pair, H. A. Johnson, W. F. Bunnell, ✓  
M. A. Medders.

Itinerancy and Elder's Orders for four years—Paul E. Allred. ✓

Auditing Committee—E. L. Shigley, Jr., Fred Brazier. ✓

Vacancies—H. R. French, C. H. Pickel, E. T. Meacham, O. B. Shows, ✓  
L. W. Moore.

Conventions—E. L. Shigley, Mrs. Florice Allred, T. L. Shirk.

Sunday School Secretary—R. M. Evans.

Sunday School Board—R. M. Evans, W. E. Hobson, Jr., T. L. Shirk.

Camp-Meeting Committee—President, R. E. Snipes; First Vice-Presi-



dent, H. F. Pair; Second Vice-President, E. L. Shigley; Third Vice-President, Mrs. C. D. Robertson; Secretary-Treasurer, Paul E. Allred.

Missionary Board—E. L. Shigley, O. B. Shows, Mrs. Florice Allred.

Memorials—E. L. Shigley, J. L. Averett, R. E. Snipes. ✓

On nomination W. E. Hobson, Jr., was elected as legal advisor.

A letter of greetings from Rev. L. A. Bamburg was read by the secretary and his character was passed by a vote of the body.

The pastoral report of Mrs. Maggie Jean Carlin was read and her character passed.

The roll of pastors was again called and the following responded with the reading of their reports: M. A. Medders, A. D. Preston, E. L. Shigley, C. W. Crowe, F. E. Crowe, G. C. Frederick, W. B. Hill, E. L. Shigley, Jr., and D. M. Downey.

On nomination and vote E. L. Shigley, Jr., was elected as an Educational Secretary for the conference.

On motion adjourned.

#### THURSDAY—AFTERNOON MEETING

Devotions were conducted by A. D. Preston.

Roll called, minutes read and approved.

Committee on Pastoral Relations gave it's first reading.

On vote it was fixed the Order of the Day for the Connectional Address at 10:00 a. m. Friday.

The roll of pastors was called and the following responded with the reading of reports, J. L. Ayerett, H. A. Johnson, R. E. Snipes, Fred Brazier, N. C. Hoggle, Edw. J. Pointer, Boss Phillips, Harry D. Clark and M. A. Medders.

T. L. Shirk gave a report of the work of the Committee on Conventions.

On motion adjourned.

#### FRIDAY—MORNING MEETING

Devotions were conducted by E. L. Shigley, Jr.

Roll called, minutes read and approved.

Credentials Committee made a supplemental report and one name was added to the roll of lay delegates.

Sunday School Secretary read his annual report which showed a very marked improvement in the efficiency standards of the schools of the conference due to the work of the secretary.

By motion and vote the time and place of the next annual session of the conference was fixed as follows, July 22, 1940 at 10:00 a.m. at the Alabama Conference Camp Grounds near Eden, Ala.

On motion and vote the Apportionment Committee was instructed to assign the budget apportionments on the basis of seventy-five per cent of the annual budget except that of the Conference President's salary.

It was voted the Order of the Day for the Educational Program at 7:15 p. m. Saturday.

Tithing Secretary reported. Report adopted.

On motion recessed to 11:00 a. m.

Called to order at 11:00 a. m. and according to the Order of the Day Rev. Roy S. Nicholson, Connectional Representative spoke to the body presenting the interest of the Connection.

On motion adjourned.



## FRIDAY—AFTERNOON MEETING

Devotions were conducted by J. R. Sims.

Roll called, minutes read and approved.

Auditing Committee reported. Report adopted.

Committee on Resolutions reported. Report adopted.

Reports were read by J. R. Sims, W. R. French and W. F. Bunnell.

On motion the secretary was instructed to have stationery printed for use of the conference officials and that postage be allowed the officials as follows, President, \$3.50, Secretary \$2.00, Treasurer \$4.50, to be paid from the funds for Conference Work.

The secretary was instructed to edit and have printed the minutes of the conference for distribution. The W. H. & F. M. S. and the W. Y. P. S. were granted the privilege of having their minutes included in the printing.

R. C. Mullinax, a member of the Faculty of Central College with several students of the college were introduced to the body.

Committee on Itinerancy and Elder's Orders reported. Report adopted.

The President read his financial report.

On motion adjourned.

## SATURDAY—MORNING MEETING

Devotions were conducted by R. E. Snipes.

Roll called, minutes read and approved.

Treasurer reported. Report adopted.

Camp-Meeting Treasurer reported. Report adopted.

Rev. R. E. Snipes was voted an appreciation of thanks for the services he rendered in connection with the camp grounds and the building of the Baker Hall.

Committee on Apportionments reported. Report adopted.

Statistical Committee reported. Report adopted as corrected.

Committee on Pastoral Relations gave a second reading.

The Committee on Thanks was instructed to prepare a report to be read at the Sunday services.

J. D. McInnish gave a report of the Mission work at Renfroe.

The report from the Ada Chapel church was read by the secretary of the Committee on Statistics.

It was moved that any item of business overlooked should be referred to the President and his advisory board.

On motion recessed for 45 minutes.

Called to order at 11:00 a. m.

Committee on Pastoral Relations gave a third reading which was adopted as read.

It was moved that the report of the Committee on Moral Reform be a reaffirmation of this committee's report given last year.

The Committee on Memorial reported with a very fitting memorial service in memory of Rev. R. A. French an Elder of the Conference who had passed to his eternal reward September 4, 1940., in which the following spoke concerning his life and work in the church to which he was so true and faithful, R. E. Snipes, Roy S. Nicholson, H. A. Johnson, W. E. Hobson, Jr., and E. L. Shigley.

Missionary Board reported. Report adopted.

A vote of appreciation was extended to Rev. Roy S. Nicholson for untiring and patient services as chairman of the session.

On motion it was voted that a cut of the likeness of Rev. R. A. French be placed in the conference minutes with a page of the same devoted to his memory.

Minutes read and approved.

On motion adjourned.

ROY S. NICHOLSON, Chairman.

W. E. HOBSON, JR., Secretary.

E. L. SHIGLEY, President.



**Report No. 1**  
**X PRESIDENT'S REPORT**

Another year has passed into history with its opportunities, responsibilities, successes and failures. We desire to thank God for His blessings that have attended our efforts, and give Him the praise for every forward step that we as a conference have been able to take and pray that the atoning blood may cover every short-coming and failures.

May we earnestly pray for grace, wisdom and vision necessary for greater victories in the future.

During the year I have held the first and fourth quarterly conference meetings of the year. I held three revival meetings in which the Lord gave us a number of souls. I have cared for the various interests of the conference to the best of my ability. I have traveled in the interests of the conference approximately 6,000 miles.

My official acts are as follows:

October 25, 1939, I appointed Chas. W. Crowe as pastor of the Way-cross Charge. On the same date I appointed M. A. Medders as supply pastor of the Mt. Olive church.

November 7, 1939, I met with the Building Committee of the Tal-ladega North Street Church and advised with them relative to the construction of a new church building.

November 1, 1939, I received the resignation of L. A. Bamburg as pastor of Nixon Chapel.

November 24, 1939, I appointed Edward J. Pointer as pastor of Nixon Chapel.

November 25, 1939, I appointed M. A. Medders pastor of Mt. Vernon church.

November 13, 1939, I appointed E. L. Shigley, Jr., pastor of the Friendship church.

December 2, 1939, I organized and received a church near Jasper and on the same date appointed D. M. Downey pastor of the church.

March 1, 1940, I received the resignation of James Allred as pastor of the Anniston church.

April 15, 1940, I received the resignation of Edward J. Pointer as pastor of Nixon Chapel and on same date appointed him as pastor of the Anniston church.

July 6, 1940, I organized and received a new church at Sylacauga, and on the same date appointed Boss Phillips as supply pastor of the church.

September 19, 1940, I appointed the chairman of the various Conference session committees.

My financial receipts were \$413.19.

Respectfully submitted,  
E. L. SHIGLEY, President.

**Report No. 2**  
**X TITHING SECRETARY**

The interest in tithing seems to be growing in the Conference. Three or more churches have organized tithing bands this year. I have preached eight times and distributed over two thousand tracts on the subject of tithing. I have received \$12.50 in offerings for expenses of travel.

Respectfully submitted,  
PAUL E. ALLRED, Tithing Secretary.

**Report No. 3**  
**AUDITING COMMITTEE**

We, your Auditing Committee have examined the books of the Treasurer and find them to be correct.

FRED BRAZIER,  
E. L. SHIGLEY, JR., Committee.

**Report No. 4**  
**RESOLUTIONS**

We, your Committee on Resolutions beg to submit the following report:

Since organization is the first requisite toward the conduct of the business of the Conference in an efficient and orderly manner.

Be it resolved that the Conference President be authorized and instructed to appoint a Nomination Committee for the annual conference session not less than thirty days before the date conference convenes. This Committee shall make nominations for all standing and session committees of the conference. The President shall be chairman of the nominating committee. In the event the president is unable to be present and serve for any reason, then the vice-president shall serve.

Be it further resolved, that this committee shall meet before the conference convenes and be ready to report at the first meeting of the conference session.

Be it further resolved that this committee shall be composed of the Conference President and one Elder and one layman from each district as the conference is now divided for the W. Y. P. S. districts.

Respectfully submitted,

J. L. AVERETT, Chairman.  
W. F. BUNNELL.

**Report No. 5**  
**ITINERACY AND ORDERS**

We, your Committee on Itineracy and Orders, make the following recommendations:

We recommend that the following persons be received by the Conference to pursue the Course of Study preparatory to travel under its directions: Boss Phillips, W. W. Franklin, J. W. Sparks, Finn Crowe, and Edmond Crowe.

We also ask those who have already been recommended to the Conference to pursue the Course of Study to pass satisfactorily two books each year if they desire to take work in the Conference.

We recommend that the transfer of Harry D. Clark, a conference preacher from the South Georgia Conference, be received and that he be placed on the roll of conference preachers.

We further recommend that Rev. Reland Elam, who has finished the Course of Study as required by the Book of Discipline, be ordained to Elders Orders.

E. L. SHIGLEY, Chairman.  
PAUL E. ALLRED, Secretary.  
R. E. SNIPES.  
C. H. PICKLE.

**Report No. 6**  
**TREASURER'S REPORT**

	Receipts	Disbursements	Balance
Home Missions .....	\$ 420.14	\$ 328.42	\$ 91.72
Foreign Missions .....	489.78	458.07	31.71
Education .....	247.12	161.24	85.88
Conference Work .....	188.93	168.18	20.75
Orphanage .....	147.61	138.06	9.55
Superannuates .....	88.98		88.98
President .....	425.19	425.19	
Minute Fund .....	49.15	36.70	12.45
Church Extension .....	542.00	487.67	54.33
	<b>\$2,598.90</b>	<b>\$2,203.53</b>	<b>\$395.37</b>

O. B. SHOWS, Treasurer.



Report No. 7

CAMP MEETING ASSOCIATION TREASURER

Receipts		Disbursements	
Camp Dues .....	\$ 64.00	Camp Expenses .....	\$239.87
Cash Offerings, etc. ....	230.95	Bank Loan .....	51.00
		Meal Tickets .....	4.08
	<hr/>		<hr/>
	\$294.95		\$294.95

Liabilities. None.

J. R. SIMS, Treasurer.

Report No. 8

APPORTIONMENT COMMITTEE

We, your Committee on Apportionments submit the following report:  
We recommend that there be an assessment of five cents per member as a minute fund and that each pastor raise it and send it to the Conference Treasurer within five weeks after the adjournment of conference.

We recommend that the present assessment of fifty cents per member for Conference Work be retained and that each church strive to bring in a full budget since our Conference Extension Work is depending on this item for development.

We recommend that each church raise seventy-five per cent of its budget as set forth in the Discipline on Home and Foreign Missions, Education and Orphanage, since this is a short conference year.

We recommend that the Conference President hold the first and last quarterly conferences, and that his salary be paid quarterly as apportioned to each church. We recommend that he accept revivals and that one half of the proceeds count on his salary. We recommend that he give two months to church extension work in the bounds of the conference under the direction of the Missionary Board and that he be paid for his labors through the Missionary Board.

PAUL E. ALLRED, Chairman.

H. F. PAIR.

WALTER MEDDERS.

Report No. 9

THANKS

We, your Committee on Thanks beg to submit the following:

We, the members of the Alabama Conference of the Wesleyan Methodist Church, assembled in our thirty-first annual session at Talladega, Ala., October 16-20, 1940, wish to express our gratitude, first, to our Heavenly Father for His manifold blessings, presence and guidance throughout this session. We wish to express our appreciation to the pastor, members and friends of the North Street Church for the hospitality shown in our entertainment.

We also wish to thank those in charge of the kitchen and dining room for the good food and excellent service.

We also wish to extend our thanks and express our appreciation to the reporter and management of the local newspaper, "The Talladega Daily Home," for publicity and announcements of the Conference and religious services.

E. T. MEACHAM,

MRS. C. D. ROBERTSON, Committee.

Report No. 10

CONFERENCE MISSIONARY BOARD

Total Receipts .....	\$200.00
Disbursements .....	139.71
	<hr/>
Balance .....	\$ 60.29

E. L. SHIGLEY, Chairman.

O. B. SHOWS, Treasurer.

MRS. FLORICE ALLRED, Secretary.

~~June 10 - 1941~~  
 X June 15 - 1941  
 > June 23, 1941

Report No. 11

# PASTORAL RELATIONS

We your Committee on Pastoral Relations beg to submit the following report. We recommend the work be supplied as follows:

- Ada Chapel—E. L. Shigley, Jr. ✓
- Akron—L. A. Bamburg. ✓
- Active—John L. Davis.
- Anniston—Edward J. Pointer.
- Bessemer—C. H. Pickel.
- Birmingham—W. R. French.
- Brent—To be supplied. ✓ Roy D. Harris
- East Lake—Elwyn T. Meacham. ✓
- Fairview—Thomas L. Shirk. ✓
- Friendship—Eugene Caddell.
- Jamestown Charge—F. E. Crowe, with H. A. Johnson, assistant.
- > Jasper—To be supplied. ✓ O. K. Williams
- Mentone—H. A. Johnson. ✓
- Mt. Olive—To be supplied. ✓ Edwin Crowe
- > Mt. Vernon—To be supplied. ✓ O. K. Williams
- Nixon Chapel—Harry D. Clark. ✓
- Pell City—R. E. Snipes. ✓
- Springdale—N. C. Hoggie. ✓
- Stanton—W. B. Hill. ✓
- Stemley—J. R. Sims.
- Sylacauga—Boss Phillips. ✓
- Talladega First—J. L. Averett.
- Talladega North Street—Fred Brazier.
- X Tuscaloosa—Paul E. Allred. ✓
- Waycross Charge—Chas. W. Crowe. ✓
- West Blocton—Finn Crowe, Jr. ✓
- Wolf Creek—Mrs. R. A. Spear.
- General Evangelist—H. Robb French.
- Conference President and Evangelist—E. L. Shigley. ✓
- Evangelistic Work—W. F. Bunnell, H. F. Pair, A. D. Preston, M. A. Medders, Reland Elam. ✓
- Conference Missionary Work—G. C. Frederick, P. V. Compton, G. H. Wood, D. M. Downey, O. K. Williams.
- Singing Evangelists—Mrs. H. R. French, Mrs. W. F. Bunnell.
- Attending Central College—Dorothy Dean Hammett, S. D. Herron, Charles Tegen, David Watts.
- Attending Marion College—Frank W. Warren.
- Pursuing Course of Study—Charles Vinson, Alex Joiner, W. T. Vinson, Frank Merchant, C. R. Brown, Frances Hammett, Edmond Crowe, Miss Ruby Lee, W. W. Franklin.
- Renfroe Mission—J. D. McInnish.

E. L. SHIGLEY, Chairman.  
 H. A. JOHNSON,  
 M. A. MEDDERS,  
 J. H. WINTERS,  
 J. L. DAVIS,  
 W. R. FRENCH,  
 D. L. JONES, Secretary.



## MINUTES OF THE WOMEN'S HOME AND FOREIGN MISSIONARY SOCIETY

The twenty-third annual session of the Women's Home and Foreign Missionary Society of the Alabama Conference of the Wesleyan Methodist Church held at Talladega, Alabama, October 16-19, 1940.

### OFFICERS OF THE SOCIETY

President—Mrs. Florice Allred, 2409 20th Street, Tuscaloosa, Ala.  
Vice-President—Mrs. O. C. Wood, 412 Jackson Street, Talladega, Ala.  
Secretary—Miss Venola Cook, Rt. 1, Brent, Ala.  
Treasurer—Miss Julia Thomas, 8629 3rd Ave., N. Birmingham, Ala.  
Y. M. W. B. Superintendent—Miss Frances French, Rt. 5, Box 250, Birmingham, Ala.  
State Organizers—Mrs. Florice Allred, Miss Frances French.

### DAILY PROCEEDINGS

(Wednesday, 4:00 P. M. October 16th)

The first meeting of the 23rd annual session of the Women's Home and Foreign Missionary Society of the Alabama Conference was called to order by the president, Mrs. Florice Allred, at 4:00 o'clock Wednesday afternoon, October 16, 1940.

Our President led us in some missionary choruses after which she read a portion of scripture from 2 Timothy 2, and made comments on the same. Mrs. H. R. French led in prayer.

The following committees were appointed by the President: Committee on Credentials, Mrs. Velma Breland, Mrs. Lula Snipes; Committee on Thanks, Mrs. J. T. McMillan; Committee on Resolutions, Mrs. C. D. Tillman; Committee on Statistics, Julia Thomas, Lois Compton; Auditing Robertson, Mrs. E. L. Shigley; Committee on Courtesies, Mrs. W. H. Committee, Mrs. E. L. Shigley, Mrs. T. L. Shirk; Subscription Solicitor, Bernice Johnson, Mrs. J. L. Averett; Committee on Order of the Day, Miss Mittie Head, Venola Cook; Reporter, Julia Thomas.

The following delegates were enrolled: Mrs. C. H. Pickel, Bessemer; Lois Compton, Pell City; Mrs. W. H. Tillman, Birmingham; Mrs. J. D. McInnish, North Street, Talladega; Mrs. Talmage Mitchell, Mt. Ivah; Mrs. Flora Thackerson, Talladega; Mrs. J. T. McMillan, Brent; Bernice Johnson, Mentone; Miss Mittie Head, Fairview; Mrs. Velma Breland, Tuscaloosa; Venola Cook, Friendship; Julia Thomas, EastLake.

Reports from the following societies were read and adopted; Tuscaloosa, Fairview, East Lake.

The President's report was read and adopted.

Our Home Missionary Secretary, Rev. Roy S. Nicholson was presented to the body.

It was made the order of the day to elect officers at 2:30 o'clock Thursday afternoon.

On motion adjourned.

(Thursday, 2:30 P. M., October 17th)

The meeting was called to order by the President. Miss Reland Elam conducted devotions.

Mrs. Banks from Springdale was enrolled as delegate.

The order of the day was called, and the following officers were



elected: President, Mrs. Florice Allred; Vice-President, Mrs. O. C. Wood; Secretary, Miss Venola Cook; Treasurer, Miss Julia Thomas; Y. M. W. B. Superintendent, Miss Frances French; State Organizers, Mrs. Florice Allred, Miss Frances French.

Our President arranged a missionary drill, which was very interesting.

Reports from the following Societies were read and adopted: Bessemer, Springdale, North Street, Talladega, Birmingham, Brent, Talladega, Pell City, Menton, Akron, Wolf Creek Y. M. W. B., Jasper, Mt. Ivah, Friendship, West Blocton.

A motion was made and seconded that \$5.00 be voted out of the treasury for the expense of the Y. M. W. B. work.

Report of Committee on Oorder of the Day was read and adopted.

On motion adjourned. Dismissed by Mrs. E. L. Shigley.

#### (Friday 8:30 A. M., Oct. 18th)

The meeting was called to order by the President. Various scriptures relating to missions were quoted. Several volunteer prayers were offered. The roll was called and each one answered with the name of a Missionary, and where they are laboring. Minutes were read and approved.

Report from Anniston Society was read and adopted.

A project for beautifying the tabernacle at the Camp Ground was discussed.

Pledges were taken for the new dormitory at Central, which were as follows: Tuscaloosa, \$10.00; Brent, \$3.00; Fairview, \$2.00; Springdale, \$3.00; Mentone, \$2.00; Pell City, \$10.00; East Lake, \$2.00; Talladega, \$5.00; Birmingham, \$5.00.

By motion \$10.000 was voted out of the treasury for Conference Minutes.

On motion adjourned.

#### (Friday 2:30 P. M., October 18th)

The meeting was called to order by the President. Verses of scripture were quoted by different ones. Mrs. W. R. French led us in prayer.

The roll was called and we answered with the names of Missionaries. The minutes were read and approved.

The Subscription Solicitor reported new subscriptions to the magazine.

The following committees' reports were read and adopted: Committee on Resolutions, Auditing Committee, Committee on Thanks, Committee on Statistics.

The treasurer's report was read and adopted.

Our President gave a very interesting talk on ways to raise money for the local society.

Mrs. O. C. Wood dismissed with prayer.

#### (Saturday 10:00 A. M., October 19th)

Our President called the meeting to order. We were led in prayer by Julia Thomas.

The Missionary Society had the privilege of suggesting a place for the French Memorial Hall to be placed at the Camp Ground. The suggested place is between the Dining Hall and the Tabernacle, facing the highway.

A motion was made that \$15.00 be voted out of the Conference Fund to apply on the wages of the kitchen workers for Camp Meeting.

It was decided that the local society having the best report next year would receive a banner. Points for awarding the banner were as follows:



Best efficiency standard, 25 points; Most members above what was reported previous year, 25 points; Most magazine subscriptions according to membership, 25 points; Most paid on budget items according to membership, 25 points.

Money to buy the banner was voted out of the Conference fund.

Y. M. W. B. report was read and adopted.

On motion adjourned.

MRS. FLORICE ALLRED, President.

MISS JULIA THOMAS, Acting Secretary.

#### TREASURER'S REPORT

	Receipts	Disbursements
Home Missions .....	\$194.78	\$194.78
Foreign Missions .....	308.81	308.81
General Fund .....	56.14	56.14
Education .....	115.56	115.56
Conference Fund .....	92.33	60.72
Orphanage .....	65.90	65.90
President's' Salary .....	6.50	6.50
Conference Work .....	12.50	12.50
Superannuated Ministers .....	2.50	2.50
Camp Grounds .....	93.42	93.42
South America .....	1.00	1.00
Bethshan Home .....	1.10	1.10
<b>TOTAL</b> .....	<b>\$950.54</b>	<b>\$918.93</b>
Balance in Treasury .....	\$ 31.61	

JULIA THOMAS, Treasurer.

#### REPORT OF Y. M. W. B. SUPERINTENDENT

I organized a Y. M. W. B. at Jasper, Ala., September 15, 1940 with 25 charter members. My other activities were carried by correspondence with the bands. Total membership 300.

#### Receipts From The Bands

Mentone .....	\$ 12.48
Tuscaloosa .....	18.06
Talladega, First .....	5.84
Pell City .....	4.11
Springdale .....	13.14
Jasper .....	.75
Friendship .....	2.00
Wolf Creek .....	7.50
Mt. Ivah .....	1.80
Brent .....	13.95
Ada Chapel .....	35.20
East Lake .....	10.00
Birmingham .....	35.00
	<b>\$173.89</b>

FRANCES FRENCH, Superintendent.

## REPORT OF COMMITTEE ON THANKS

We, your Committee on Thanks wish to submit the following report:

We, the members of the Woman's Home and Foreign Missionary Society of the Alabama Conference wish to express our thanks and appreciation to the members and friends of the Talladega, North Street Church for their kindness and courtesy shown us during the conference session of 1940, and also for the splendid entertainment given in the dining hall. May God richly bless the work at this church.

MRS. J. T. McMILLAN, Committee.

## REPORT ON AUDITING COMMITTEE

We, your Auditing Committee, beg to submit the following report:

We have looked over the Treasurer's books and have found them to be correct.

MRS. T. L. SHIRK,

MRS. E. L. SHIGLEY, Committee.

## REPORT OF COMMITTEE ON RESOLUTIONS

We, the Committee on Resolutions, wish to submit the following report:

Be it resolved that we the members of the W. H. & F. M. Society urge our women to (first) familiarize themselves with the doctrines of the Church and a personal experience of grace.

(Second), That we devote ourselves to the promotion of our Church interest, that we become familiar with our church work, and that we set ourselves to the task of efficiently applying said plan.

(Third), Concerning dress as instructed by Peter and Timothy. (1 Peter 3:3, 4, 1 Tim. 2:9, 10) And as exemplary Christian mothers we train our children and youth to modesty and proper respect for the sacredness of their bodies; that we teach them not to wear the low cut sleeveless dresses and short skirts which expose the limbs; that we teach them the facts of life, urging our young people to avoid all garments which accentuate the suggestion of sex, which so strongly tends to promote lust and crime.

Be it resolved that we deplore the low standard of morals which destroy the sanctity of marriage, the present attitude toward sin, Sabbath desecration, and cigaret smoking, and the increasing anti-Christian and blasphemous trend of the modern school program, wherein God is insulted and despised, and in which the natural appetite is deified.

Be it resolved that we urge the strongest opposition to the profane literature and ungodly amusements which do now corrupt our land.

Be it resolved that we pledge ourselves to a constant and consistent emphasis of seeking and maintaining a definite experience of holiness of heart.

Let it be urged that each society read at least three good Missionary books each year, such as our current Mission study book, Jonathan Goforth and C. T. Studd.

That we urge our women to recognize intercessory prayer as the most important phase of our Missionary Work, not forgetting to carry regularly to the throne of Grace our suffering sisters throughout the world in this time of distress and war.

MRS. C. D. ROBERTSON,

MRS. E. L. SHIGLEY, Committee.



# MINUTES OF THE WESELYAN YOUNG PEOPLE'S SOCIETY

## ANNUAL MEETING

President—T. L. Shirk, R. F. D. No. 1, Cottondale, Ala.

Vice-President—E. L. Shigley, Jr., Rt. No. 1, West Blocton, Ala.

Secretary—Miss Louise Herron, R. F. D. No. 1, West Blocton, Ala.

Treasurer—Eber C. Hobson, 1928 Greensboro Ave., Tuscaloosa, Ala.

The Wesleyan Young People's Society of the Alabama Conference of the Wesleyan Methodist Church met in its twelfth annual session at Talladega, Ala., October 19, 1940.

The meeting was called to order by the Vice-President, Rev. Paul E. Allred.

By motion a nominating committee was appointed to make nominations for the officers of the society. T. L. Shirk, was chosen chairman, with Mrs. Elwyn Meacham, Harold Shigley, Miss Reland Elam and Charles Crowe composed the committee.

Reports were read from the following societies: Mt. Ivah, Stanton, Ada Chapel, East Lake, Friendship, Mentone, Pell City, and Springdale.

The Nominating Committee reported. The report was adopted and the following officers were elected: President, T. L. Shirk; Vice-President, E. L. Shigley, Jr.; Secretary, Miss Louise Herron, Treasurer, Eber C. Hobson.

The following committees were elected: Resolution, Elwyn Meacham and Finn Crowe, Jr.; Statistics, Harold Shigley, Dorothy Hammett; To award the Banner, Julia Thomas, Venola Cook; Auditing Committee, Reland Elam, Raymond Brown.

On motion adjourned.

## Afternoon Meeting

Minutes read and approved.

Miss Frances Hammett was elected as Journal solicitor.

By motion it was agreed to give the Journal solicitor \$1.50 for expenses.

The Committee on Resolutions read it's report which was adopted.

The following societies read their reports: Birmingham, Fairview, Talladega First, Talladega North Street, Tuscaloosa.

The treasurer's report was read.

The committee to award the banner reported awarding the banner to the Tuscaloosa society.

The Auditing committee reported. Report adopted.

The treasurer's report was adopted.

Committee on Statistics reported.

On motion adjourned.

T. L. SHIRK, President.

LOUISE HERRON, Secretary.

## RESOLUTIONS

We, your Committee on Resolutions beg to submit the following report:

Be it resolved that we the members of the society and the young people of the Wesleyan Methodist Church of Alabama be loyal to our church and her standards.

Be it further resolved that we be more spiritual and at no time involve ourselves in anything that is questionable or worldly.

Be it further resolved, that we renew our interest in all the institutions of the church and strive to see that the society, as a whole, has this interest.

Be it further resolved, that all W. Y. P. S. members make a special effort to attend the annual Camp Meeting.

Be it further resolved, that all W. Y. P. S. budget funds be paid in to the treasurer five days before each annual conference.

Be it further resolved, that each member of the society pay sixty-five cents per year to be divided as follows: Education, 20 cents; Home Missions, 10 cents; Foreign Missions, 10 cents; President's expense, 10 cents; Orphanage, 10 cents; Conference work, 5 cents.

Be it further resolved, that all societies make a special effort to secure a Wesleyan Young People's Journal for every five members.

ELWYN MEACHAM,  
FINN CROWE, JR.

## W. Y. P. S. TREASURER'S REPORT

	Receipts	Disbursements
Balance in Treasury 1939 .....	\$ 45.43	\$
Education .....	55.32	55.32
Foreign Missions .....	15.20	15.20
Home Missions .....	18.75	18.75
Orphanage .....	6.57	6.57
President .....	6.13	6.13
Conference Work .....	3.31	.....
Conference Minutes .....	.....	5.00
Connectional Dues .....	8.00	8.00
Worker's Cottage on Camp Grounds.....	19.98	56.52
Balance in Treasury 1940.....	.....	7.20
	\$178.69	\$178.69

EBER C. HOBSON, Treasurer.



# W. H. AND F. M. SOCIETY STATISTICAL REPORT

NAME OF SOCIETY AND PRESIDENT	Members	Home Missions	Foreign Missions	Orphanage	Education	Local Church Work	Other Objects	Cash on Hand	TOTALS
Ada Chapel—Mrs. Leonard Hubbard, Rt. 1, West Blocton, Ala.....	8	\$ 2.45	\$ 5.67						13.02
Akron—Mrs. L. H. Snipes, Rt. 1, Akron, Ala.....	6	.45	5.28						5.73
Anniston—Mrs. F. E. Brown, Rt. 3, Anniston, Ala.....	5		4.19					1.15	12.49
Bessemer—Mrs. C. H. Pickel, 4104 Poplar Street, Birmingham, Ala.....	5	1.63	3.74			30.96	8.38	.50	48.45
Brent—Mrs. Ira Snipes, Brent, Ala.....	13	40.51	22.13		35.16	165.00	14.50		87.95
East Lake—Mrs. E. T. Meacham, Rt. 1, Box 5, Irondale, Ala.....	13	7.39	16.23		3.00	60.33	1.00		87.95
Fairview—Mrs. W. B. Rainey, Rt. 1, Cottondale, Ala.....	10	18.40	51.40	12.50	3.00	28.10	23.58	29.78	173.64
Friendship—Mrs. E. L. Cook, Rt. 1, Brent, Ala.....	5	5.44	13.54		10.00	29.00	11.00		73.35
Jasper—Mrs. Vonie Black, Jasper, Ala.....	12	2.13	7.83			10.00	.41		21.31
Mentone—Mrs. Albert Cash, Mentone, Ala.....						1.37			1.37
Mt. Ivah—Mrs. Charles Crowe, Rt. 1, Heiberger, Ala.....	3	11.64	7.90	5.00	3.00	10.00	42.27		83.07
Talladega, North Street—Mrs. Fred Brazier, 306 West St. Talladega, Ala.....	6	3.50	9.55			6.50			27.55
Pell City—Mrs. C. D. Robertson, Eden, Ala.....	11	5.33	10.33			413.14	5.00	3.00	442.44
Springdale—Mrs. Willow Abercrombie, Rt. 1, Box 7, Irondale, Ala.....	17	25.76	75.26	16.25	3.00	223.65	201.01		564.91
Talladega—Mrs. O. C. Wood, 307 Adams Ave., Talladega, Ala.....	17	4.50	21.73			24.50	70.27		130.00
Tuscaloosa—Mrs. Florice Allred, 2409 20th Street, Tuscaloosa, Ala.....	13	19.51	41.37	6.15	3.00	6.41	28.98	2.61	108.03
West Blocton—Mrs. Paul McCool, West Blocton, Ala.....	55	68.32	68.32	36.00	37.00	62.35	79.20		363.59
	7	1.27	59.26		2.00		4.25		68.79
TOTALS.....	206	\$ 188.23	\$ 423.75	\$ 73.75	\$ 90.87	\$ 1037.79	\$ 498.85	\$ 85.87	\$ 2,520.49

## W. Y. P. S. STATISTICAL REPORT

NAME OF SOCIETY AND PRESIDENT	Active Members	Associate Members	Journals	Education	Missions	Orphanage	Conference W. Y. P. S. Work	W. Y. P. S. President	Connectional Dues	Other Objects	TOTALS
Ada Chapel—Louise Herron.....	18	6		\$ 1.25	\$ 4.00				\$ 1.00	\$ 26.25	\$ 32.50
Birmingham—Frances Ray.....	28		10	2.20	2.20	1.10	.55	1.10	1.00	37.90	46.05
East Lake—Julia Thomas.....	10	5		10.00	3.50				1.00	20.40	34.90
Fairview—Clara Hutchins.....	9	11	10		2.00				1.00	5.00	8.00
Friendship—Venola Cook.....	20		1	2.06	2.08		.51		1.00	4.49	10.14
Menton—Bernice Johnson.....	15	10	10	1.00	1.00				1.00	50.00	53.00
Mt. Iuah—Mrs. J. H. Graves.....	30					1.00			1.00	5.83	7.83
Pell City—Lois Compton.....	19	12	10	11.05	1.50		1.61		1.00	248.00	263.10
Springdale—Malcolm Billings.....	15			9.92				5.00	1.00	32.21	48.13
Stanton—Ruby Mae Davis.....	15				3.55				1.00	16.36	20.61
Stemley—Rev. Robert Sims.....	10			1.06	2.00					2.00	5.06
Talladega—Flora Thackerson.....	21	6	6	1.75	1.40	.70	1.05		1.00		5.90
Talladega (North Street)—Mrs. Fred Brazier.....	33	4	12	2.91	2.20	7.67	1.10			2.30	16.18
Tuscaloosa—Eber C. Hobson.....	35	10	24	25.20	30.40	2.10	1.05	2.10	1.00	249.15	311.00
TOTALS.....	268	91	83	\$68.40	\$55.83	\$12.57	\$ 5.92	\$ 8.20	\$12.00	\$699.89	\$862.40



## BUDGET APPORTIONMENT

NAME OF CHURCH	Members	Home Missions	Foreign Missions	Education	Orphanage	Conference Work	President's Salary	Minutes	Superannuated Minister's Fund	TOTAL
Ada Chapel.....	42	\$ 15.00	\$ 60.00	\$ 35.60	\$ 7.00	\$ 15.00	\$ 15.00	2.00	4.20	\$ 153.80
Akron.....	13	5.00	20.00	11.00	2.50	5.00	5.00	.65	1.30	54.45
Active.....	38	15.00	60.00	35.60	7.00	15.00	12.50	2.00	3.80	150.90
Anniston.....	53	19.00	76.00	49.50	9.50	19.00	35.00	2.60	5.30	215.90
Bessemer.....	27	9.50	37.00	20.00	4.75	9.50	25.00	1.30	2.70	109.75
Birmingham.....	72	27.00	108.00	67.50	13.50	27.00	50.00	3.60	7.20	303.80
Brent.....	48	18.00	73.50	45.00	9.00	18.00	30.00	2.40	4.80	200.70
East Lake.....	25	9.00	35.50	21.50	4.50	9.00	15.00	1.25	2.50	98.35
Fairview.....	30	10.25	45.00	28.00	5.00	10.25	15.00	1.50	3.00	148.00
Friendship.....	31	10.25	45.00	28.00	5.00	10.25	15.00	1.50	3.10	148.10
Jamestown Charge.....	67	24.75	99.00	61.75	12.25	24.75	30.00	3.00	6.70	262.20
Jasper.....	13	5.00	20.00	11.00	2.50	5.00	10.00	.65	1.30	59.45
Mentone.....	49	18.50	74.00	46.25	9.25	18.50	35.00	2.50	4.90	211.90
Mt. Olive.....	15	5.00	22.50	14.00	2.50	5.00	5.00	1.00	1.50	56.50
Mt. Vernon.....	18	5.00	22.50	14.00	2.50	5.00	5.00	1.00	1.80	56.80
Nixon Chapel.....	19	7.00	30.00	16.00	3.00	7.00	12.50	1.00	1.90	78.40
Pell City.....	85	31.75	127.00	78.50	15.50	31.75	40.00	4.25	8.50	337.25
Springdale.....	23	8.50	34.00	21.00	4.25	8.50	22.50	1.15	2.30	102.20
Stanton.....	44	16.50	66.00	41.25	8.25	16.50	25.00	2.20	4.40	182.10
Stemley.....	16	5.00	25.50	14.00	2.50	5.00	7.50	.80	1.60	61.90
Sylacauga.....	23	8.50	34.00	21.00	4.25	8.50	10.00	1.15	2.30	89.70
Talladega.....	62	20.50	90.00	55.00	10.00	20.50	30.00	3.00	6.20	235.20
Talladega (North Street).....	41	15.00	60.00	35.60	7.00	15.00	25.00	2.00	4.10	163.70
Tuscaloosa.....	93	35.00	139.50	87.00	18.00	34.50	<del>150.00</del> 50.00	5.00	9.30	378.30
Waycross Charge.....	134	40.00	180.00	50.00	20.00	20.00	25.00	3.00	5.00	343.00
West Blocton.....	32	10.50	46.00	28.50	5.50	10.50	25.00	1.60	3.20	130.80
Wolf Creek.....	9	2.50	10.00	7.00	2.00	2.50	5.00	.45	.90	30.35
TOTALS.....	1,130	\$377.50	\$1,676.00	\$942.55	\$197.00	\$ 377.50	\$ 600.00	\$ 52.55	\$ 104.70	\$4,363.65

# STATISTICAL REPORT

21

NAME OF CHURCH	Time Employed 8 Mos.	Appointments	Church Societies	Wesleyan Methodist	Wesleyan Missionary	S. S. Banner	Jr. Class Papers	Children's Friend	Teachers Quarterly	Senior Quarterly	Intermediate Quarterly	Junior Quarterly	Primary Quarterly	Home Dept. Or.	Little Folks Cards	Bible Lesson Charter	Received	Expelled	Discontinued	Died	Granted Letter	Number Last Year	Present Number
Ada Chapel.....	11	1	1	4	2	12			2	30	10	10			18		3					39	42
Akron.....	12	1	1		1				2	10	10				10							13	13
Anniston.....	12	1	1	3	2	8			6	35	30	15			19		2		9	3		63	53
Bessemer.....	12	1	1						7	30	20	23			20		1			2		28	27
Birmingham.....	12	1	1	13	12	35	20		9	70	25	25			18	1	13		2	2	5	68	72
Brent.....	12	1	1	6	1	15		10	6	40		15	5		15	1	4		2	1	1	48	48
East Lake.....	12	1	1	2	3	18	6	5	5	20	10	7			7	1	4					21	25
Fairview.....	12	1	1		1	15			3	26	12	10	8		8		4				3	28	30
Friendship.....	12	1	1	8	1					18	14	9			5							31	31
Jamestown.....	12	2	2	14	1		6		6	26	48	26		1	21		14				1	54	67
Jasper.....	10	1	1	1					2	12	10	10			10		14			1			13
Mentone.....	12	1	1	10	6	33			4	30	8		10		10		3	2				48	49
Mt. Olive.....	12	1	1	2		1				8	11				7		1					14	15
Mt. Vernon.....	12	1	1							8		14			8		11					7	18
Nixon Chapel.....	12	1	1						4	12	8	8			6		2					17	19
Pell City.....	12	1	1	13	8				10	33	12	12	10	4	11		10		5		2	82	85
Springdale.....	12	1	1	12	1		12		10	30	25	25	25		25		2		4			25	23
Stanton.....	12	2	2	4				1	5	44	20	16	6		21	1	6		1	1	1	79	82
Stemley.....	12	1	1	2		2			4	10	8	6			5		1		3		1	19	16
Sylacauga.....	3	1	1	2	1				4	20	14	18	18		10		1					23	
Talladega First.....	12	1	1	11	6	3			8	38	30	28	18		17				26		1	88	62
Talladega North Street.....	12	1	1	1	18				6	18	18	18	18		10		19		1		1	23	41
Tuscaloosa.....	12	1	1	50	32	10			7	125	35	35	20	4	25	1	4		5	2	2	98	93
Waycross.....	12	2	2	3	3	5			3	43	42	30	10		25		8		5	3	3	137	134
West Blocton.....	12	1	1	2	2		18		5	25		18	12		10				2		2	36	32
Wolf Creek.....	12	1	1	2	1	5			3	8		5			5		1					8	9
TOTALS.....	300	29	29	165	102	162	62	16	121	761	420		167	9	383	5	127	2	65	15	22	1074	1122

485481

1163  
1122  
41

21041.08



# STATISTICAL REPORT—(Continued)

NAME OF CHURCH	Loss	Gain	No. Under 14 Years	Associate Members	Baptized	Local Preachers	Members Tithing	Sunday Schools	Officers	Teachers	Scholars	Main School	Average Attendance	Home Dept.	Cradle Roll	Total	Scholars Converted	Scholars Joining Church	Dept. Supts.	Training Courses	Organized Classes	Books In Library	W. Y. P. S. Societies	W. Y. P. S. Members	Church Buildings
Ada Chapel.....	3					2	10	1	2	5	50	55	32			57	12	3					1	20	1
Akron.....							4	1	2	4	25	31	22			40	5								1
Anniston.....	10			4		1	8	1	2	6	167	160				167	2	1					1	20	1
Bessemer.....	1						5	1	2	5	60	53	55			60	1								1
Birmingham.....	1	4				1	40	1	3	9	118	130	85		23	130	3	6	2		2	125	1		1
Brent.....					3	1	25	1	3	5	45	53	53			53	3	3				10	1	15	1
East Lake.....							10	1	4	6	46	56	35		6	62	6	2	1	2	1	4	1	10	1
Fairview.....		2	2				10	1	2	4	48	54	43		3	57	1	3	1			43	1	9	1
Friendship.....							6	1	4	5	35	40	30			40							1	20	1
Jamestown.....	13				8		11	2	7	9	74	90	61	2		101	13		1						2
Jasper.....	13					2	3	1	2	4	50	50	38			54	11	1					1	23	1
Mentone.....	1					2	26	1	4	4	65	73	34	2	5	73							1	15	1
Mt. Olive.....	1					1	5	1	2	3	26	32	25			32	3	1		2			1	10	1
Mt. Vernon.....	11	3			10		3	1	2	4	25	31	25			31	20	11							1
Nixon Chapel.....	2						6	1	3	4	23	30	20			30									1
Pell City.....					3	5	40	1	6	8	128	142	59	8	35	174	9	1	5		8		1	29	1
Springdale.....	2	3		2		3	12	1	3	10	79	92	63		12	104		2	1	2		12	1	15	1
Stanton.....	3	3	4		9	2	39	2	7	10	124	141	65			141	27	6					1	15	2
Stemley.....	3					1	1	1	2	3	17	22	19			22		1					1	10	1
Sylacauga.....	23	3			5	2	7	1	9	4	59	72	45			72	15	7	1						1
Talladega First.....	26					5	8	1	2	9	110	121	73		10	131	2	1				54	1	21	1
Talladega North Street.....	18	4			8	3	11	1	2	7	58	68	42	1	10	78	5	5	1				1	33	1
Tuscaloosa.....	5		8			3	45	1	4	8	179	191	142	17	14	221	12	5	5		7	22	1	42	1
Waycross.....	3			2	4		13	2	5	8	107	120	69			120	11	5					1	30	2
West Blocton.....	4						10	1	2	5	75	82	54		4	86			1			34			1
Wolf Creek.....	1	1				1	3	1	2	2	15	17	12			17		1							1
TOTALS.....	54	101	26	8	53	33	361	29	88	151	1808	2006	1191	29	122	2153	172	63	22	6	18	304	18	337	29

# STATISTICAL REPORT—(Continued)

NAME OF CHURCH	Value of Buildings	Indebtedness	Parsonages	Value of Parsonages	Indebtedness	Cash or Other Values	Pastor's Salary	Parsonage Rent	Fees	Gifts	Total Pastor's Receipts	President's Salary	Evangelistic's Help	Sunday School Expense
Ada Chapel	\$ 650.00		1	\$ 750.00		\$ 50.00	\$ 226.96	\$ 33.00		\$ 102.84	\$ 362.80	\$ 15.00	\$ 35.26	\$ 22.61
Akron	500.00						32.50			4.00	36.50		11.00	6.00
Annisston	1,400.00	\$ 800.00				370.00	185.00			5.00	190.00	18.00	68.75	130.06
Bessemer	3,000.00						340.23			110.00	340.23	15.00	14.09	90.33
Birmingham	50,000.00					350.00	1,010.00	120.00	6.00	60.00	1,196.00	40.00	260.00	97.87
Brent	2,000.00	300.00	1	1,000.00	\$ 600.00	300.00	478.50	96.00	6.00	106.05	686.55	25.00	120.00	41.30
East Lake	2,000.00					180.00	347.84		2.00	42.00	391.84	13.24	61.21	36.99
Fairview	1,000.00		1	850.00		125.00	234.06	96.00	1.00	227.68	558.74	10.03	40.00	26.89
Friendship	800.00		1	800.00		75.00	60.48		2.00	10.00	72.48	14.00	18.69	13.97
Jamestown	3,750.00					250.00	110.00			40.00	150.00	20.00	8.00	44.79
Jasper	300.00					50.00	46.35			11.30	57.65	3.80	29.41	16.16
Mentone	2,000.00		1	500.00		210.00	351.10	60.00		103.10	514.20	30.00	38.00	43.60
Mt. Olive	200.00						18.00			2.00	20.00	5.00	7.00	8.81
Mt. Vernon	350.00					10.00	31.00			5.00	36.00	5.00	10.00	1.75
Nixon Chapel	400.00		1	500.00			58.90			16.06	74.96	13.00	11.65	12.14
Pell City	3,500.00		1	1,500.00		700.00	650.00	244.00	18.50	220.00	1,132.50	30.35	172.20	51.61
Springdale	2,200.00		1	1,600.00	143.67	200.00	171.41	150.00	12.00	75.00	408.41	21.50	68.91	42.96
Stanton	2,500.00		1	540.00		125.00	349.82		3.00	120.00	472.52	20.00	34.25	31.91
Stemley	275.00					52.00	3.00		3.00	1.50	7.50	5.00	37.85	10.51
Sylacauga	200.00	74.00				6.50						1.00		5.26
Talladega First	2,000.00		1	1,500.00		200.00	413.56	150.00	5.00	14.00	582.56	25.56	23.00	80.90
Talladega North Str	2,500.00	478.65				85.80	69.28		1.50	9.50	80.28	6.00	40.00	26.89
Tuscaloosa	6,000.00	200.00	1	2,000.00	32.00	500.00	780.00	240.00	26.00	56.00	1,100.00	42.00	187.00	135.46
Waycross	2,000.00		1	425.00		120.00	306.70	50.00	1.00	7.85	365.60	21.25	66.00	32.57
West Blocton	2,000.00		1	700.00		75.00	180.00				180.00	25.00	104.00	43.38
Wolf Creek	500.00						7.35	16.00		43.20	66.55	4.00	28.85	9.01
TOTALS	\$90,725.00	\$ 1,852.65	13	\$12,665.00	\$ 775.67	\$ 4,034.30	\$ 6,302.74	\$ 1,655.00	\$ 87.00	\$ 1,174.28	\$ 9,093.94	\$ 431.19	\$ 1,269.81	\$ 1,105.81

55000

82884 599.49 10978 90377



**STATISTICAL REPORT—(Continued)**

NAME OF CHURCH	Building And Repairs	Incidental Expenses	Home Missions	Foreign Missions	Church Extension	Education	Conference Work	Supr. Ministers Fund	General S. S. Work	W. Y. P. S.	Orphanage	Other Benevolent Objects	Total for Pastor	Total for Churches	Total for Benevolence	Total for All Purposes
Ada Chapel.....	\$ 800.00	\$ 2.00	\$ 7.70	\$ 42.62	\$ 1.60	\$ 8.50	\$ 11.50	1.65	\$ 1.35		\$ 9.50		\$ 362.80	\$ 874.87	\$ 88.82	\$ 1,326.49
Akron.....	25.00	25.00	45.00	5.28				.50				9.00	36.50	67.00	14.78	118.28
Anniston.....	195.70	137.79		4.19				3.00			8.00		190.00	550.30	15.19	755.49
Bessemer.....	233.69	56.79	16.12				9.24	2.00	4.00		7.30	15.00	340.23	409.90	53.76	802.39
Birmingham.....	515.10	312.10	47.67	62.25		41.96	23.55	1.00	5.10		31.01	280.10	1,196.00	1,225.07	463.64	2,884.71
Brent.....	217.52	29.80	29.39	35.01		13.15	22.27	2.40	2.50		14.00	45.00	686.55	433.62	236.18	1,356.35
East Lake.....	75.82	44.20	14.90	62.40	16.92	26.50	11.55	2.10	2.00	7.87	10.00	36.74	391.84	231.46	191.00	814.30
Fairview.....		12.40	14.00	58.82	19.50	35.00		3.00	2.70	7.00	7.00	25.00	558.74	89.32	183.20	831.26
Friendship.....		1.75	5.16	13.58		6.06	10.01	1.00	2.15		6.28	5.57	72.48	48.41	49.81	170.70
Jamestown.....		37.40	17.00	6.90		10.00	32.52	7.20	4.40		8.50		150.00	110.19	86.52	346.61
Jasper.....	35.00	3.80									.33	.75	57.65	399.37	1.08	454.30
Mentone.....	42.90	95.88	24.00	23.17		18.20	24.00	3.00	5.00	52.00		21.00	514.20	250.38	170.37	934.95
Mt. Olive.....		4.00									.50	2.50	20.00	24.81	3.00	47.81
Mt. Vernon.....	8.00	3.00	1.00								1.00	2.00	36.00	27.75	4.00	64.75
Nixon Chapel.....	3.00	11.65	1.00					.45					74.96	51.44	1.45	127.85
Pell City.....	450.50	122.25	29.36	79.37		13.50	7.11	1.00	2.00	1.00	6.25	785.85	1,132.50	826.81	925.44	2,884.75
Springdale.....	500.00	35.00	15.00	34.87		12.92	12.50	2.50	1.54	33.21	6.83	93.97	408.41	668.37	213.34	1,290.12
Stanton.....		12.08	7.05					1.69		20.73	6.25		472.52	98.24	35.72	606.48
Stemley.....	50.00		2.00	1.00		1.16		1.02	2.50	4.25	2.40	5.05	7.50	103.36	19.38	130.24
Sylacauga.....	59.30													65.56		65.56
Talladega First.....	35.83	146.35	38.31	47.91		11.75	12.50	1.50	1.35		18.77	6.24	582.56	311.64	179.92	1,074.72
Talladega North.....	518.04	47.54	6.43	13.66		2.91	2.30			1.10	11.47	42.29	80.28	638.46	460.78	1,179.52
Tuscaloosa.....	841.00	215.00	84.15	106.59		62.20	69.25	3.38	5.00	67.00	63.10	127.00	1,100.00	1,426.46	587.57	3,112.03
Waycross.....	85.00	5.00	9.66	9.55		7.03	6.00	2.00	.82		6.67	14.50	365.60	209.82	56.23	631.65
West Blocton.....	19.42	37.80	33.27	72.26		47.00	18.76	5.00	2.50		11.00	11.00	180.00	229.60	200.79	610.39
Wolf Creek.....		16.27	3.00	5.00		2.50	4.40	.80	1.20		2.00	11.50	66.55	58.13	30.40	155.08
<b>TOTALS.....</b>	<b>\$ 4,989.99</b>	<b>\$ 1,955.45</b>	<b>\$ 446.67</b>	<b>\$ 699.51</b>	<b>\$ 38.02</b>	<b>\$ 350.34</b>	<b>\$ 234.73</b>	<b>\$ 46.19</b>	<b>\$ 46.11</b>	<b>\$ 193.06</b>	<b>\$ 257.54</b>	<b>\$ 1,107.54</b>	<b>\$ 9,093.94</b>	<b>\$ 9,482.86</b>	<b>\$ 3,732.10</b>	<b>\$22,308.90</b>

38880  
 108 x  
 836877  
 806112  
 3170.22  
 19672.08