

MINUTES

of the

THIRTY-SEVENTH ANNUAL SESSION

of the

CALIFORNIA CONFERENCE

of the

**WESLEYAN METHODIST CHURCH
OF AMERICA**

held at

AZUSA, CALIFORNIA

June 26 - 28, 1961

TABLE OF CONTENTS

ANNUAL CONFERENCE

Officers of the Conference	5
Conference Roll	8
Directory of Church Location	12
Record of Attendance	13
Journal of Daily Proceedings	17
Reports Index	30
Standing Rules	95

SPECIAL SESSION OF ANNUAL CONF.

Record of Attendance	103
Journal of Proceedings	105
Reports	108

WOMEN'S MISSIONARY SOCIETY

Conference Officers	115
Local Society Presidents	117
Daily Proceedings	119
Reports	123

WESLEYAN YOUTH

Conference Officers	135
Youth Directory	137
Daily Proceedings	139
Reports	143



Azusa College Drive

Dr. H. K. Sheets
General Superintendent
of the
Wesleyan Methodist Church
and
Denominational Representative



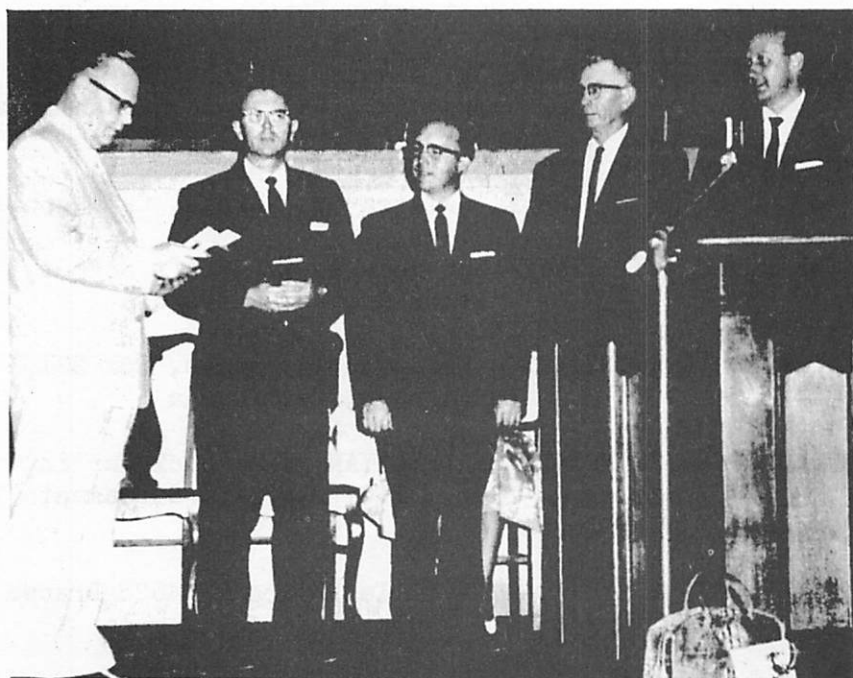


President Emeritus,
Rev. David H. Scott

Below Dr. H. K. Sheets
instructs the President,
Rev. Archy L. Mudgett,
and the Secretary, Rev.
John H. Henley, on an
item of business.



OFFICERS OF THE CONFERENCE



Installation of Conference Officers by Dr. H. K. Sheets
Left to right - Sheets, Mudgett, Butcher, Henley, Stewart

PRESIDENT EMERITUS - D. H. Scott, 1412 Oxford Ave.
Pasadena, California

PRESIDENT - Archy L. Mudgett, 935 East Galatea Street
Azusa, California

VICE-PRESIDENT - Orval C. Butcher, 1345 Skyline Drive
Lemon Grove, Calif.

SECRETARY - John H. Henley, P. O. Box 606
Carlsbad, California

TREASURER - Theodore R. Stewart, 1625 West Fern Drive
Fullerton, California

CONFERENCE OFFICERS (Cont.)

BURIAL ASSOCIATION SECRETARY - Harold Taylor, Box 225,
Pine Grove, California

CARD CALL SECRETARY - Galen Anderson, 18232 Beach Blvd.,
Huntington Beach, California

CHILD EVANGELISM SECRETARY - Russell Schumacher,
502 Radway St., La Puente, California

CHURCH DEVELOPMENT SECRETARY - Archy Mudgett,
935 E. Galatea St., Azusa, California

CONFERENCE HISTORIAN - Sue Spisak, 1680 Taft Street,
Lemon Grove, California

EDUCATIONAL SECRETARY - Fred Van Tatenhove, Box 231,
Chester, California

PROMOTIONAL SECRETARY OF WESLEYAN MEN - Jack Martin,
620 Forum Bldg., 1107 9th St., Sacramento 14,
California

SUNDAY SCHOOL SECRETARY - Ollie Philpot, 24528 Dracea Ave.,
Sunnymead, California

TITHING SECRETARY - Emerson Smith, 1025 N. 32nd Street,
Phoenix, Arizona

TRANSPORTATION SECRETARY - Richard Rossow, 3431 Maureen
Dr., Sacramento, California

MEMBER OF BOARD OF TRUSTEES OF MILTONVALE COLLEGE -
Ministerial - Archy L. Mudgett, 1965
Alternate Ministerial - Orval C. Butcher, 1965
Lay - George K. Wilch, 1963
Alternate Lay - Leola Rossow, 1963

MEMBER OF BOARD OF TRUSTEES OF AZUSA COLLEGE -
Archy L. Mudgett
Theodore Stewart

ADVISORY BOARD
Orval Butcher, William Marshburn

CONFERENCE OFFICERS (Cont.)

CONFERENCE BOARD OF TRUSTEES

Ministerial - John H. Henley, 1962
 Clinton W. Jones, 1963
 Sherwood I. Eddy, 1963
 Archy L. Mudgett, 1963
 Charles H. Butcher, 1964

Lay - George K. Wiloh, 1962
 William P. Marshburn, 1963
 Elzie P. Gordon, 1964
 Max A. Trayer, 1964

CONFERENCE BOARD OF CHURCH EXTENSION AND EVANGELISM

Archy Mudgett	Sherwood Eddy	Max Trayer
Orval Butcher	Charles Butcher	James Judy
Theodore Stewart	George Wilch	Edna Judy
John Henley	William Marshburn	Ollie Philpot
Clinton Jones	Elzie Gordon	Derric Johnson

SUNDAY SCHOOL BOARD - Eugene Welliver, 1962
 Edward Eddy, 1963

SUPERANNUATE PENSION PLAN BOARD - John Henley, 1962
 Arthur Depew, 1963 - Charles Butcher, 1964

STANDING COMMITTEES

AGENDA - Archy Mudgett	Edna Judy
Orval Butcher	Derric Johnson
John Henley	Ollie Philpot

ITINERACY AND ELDER'S ORDERS -	
Malcolm Robertson, 1962	Clinton Jones, 1964
James Judy, 1963	Edward Eddy, 1965

JUDICIARY - Clinton Jones	Archy Mudgett
Orval Butcher	James Judy

NOMINATING - Archy Mudgett	Lemon Grove Church Delegate
James Judy	Sacramento Church Delegate
Geo. Stoddard	Whittier Church Delegate

STATISTICAL - Eugene Welliver
 Dorothy Berk

CONFERENCE ROLL

ELDERS - STATIONED LIST

- Paul J. Batman, 1393 N. Marengo Ave., Pasadena, Calif.
Sycamore 8-9243
- Charles H. Butcher, 5517 Dewey Drive, Fair Oaks, Calif.
- Coral W. Butcher, 5517 Dewey Drive, Fair Oaks, Calif.
- Claton G. Butcher, 5517 Dewey Drive, Fair Oaks, Calif.
YOrktown 7-7149
- Orval C. Butcher, 1345 Skyline Dr., Lemon Grove, Calif.
HOpkins 3-0211
- Wendell E. Campbell, 2321 W. 178th St., Torrance, Calif.
DAvis 4-5565
- Charles W. Denison, 104 E. Ridge Rd., Grass Valley, Calif.
Phone 273-2142
- Arthur E. Depew, 626 $\frac{1}{2}$ N. Electric Ave., Alhambra, Calif.
CUmberland 3-5488
- Esther L. Depew, 626 $\frac{1}{2}$ N. Electric Ave., Alhambra, Calif.
CUmberland 3-5488
- Edward L. Eddy, 1450 Peach St., El Cajon, California
HIckory 4-3348
- ✓ Sherwood I. Eddy, 7435 S. Norwalk Blvd., Whittier, Calif.
OXford 5-1276 or OXford 5-4209
- Ronald A. Heavilin, 5517 Dewey Drive, Fair Oaks,
California
- Alice Mae Heavilin, 5517 Dewey Drive, Fair Oaks,
California
- John H. Henley, P. O. Box 606, Carlsbad, California
PArkway 9-1697
- Lee R. Hoge, 4455 W. 168th St., Lawndale, California
FRontier 4-6129
- Bud B. Jillson, P. O. Box 2041, Manila, Philippine
Islands
- Derric E. Johnson, 411 Billow Dr., San Diego, Calif.
HOpkins 9-4629
- Clinton W. Jones, 450 E. Myrtle Ave., Glendora, Calif.
EDgewood 5-9739
- James H. Judy, 10600 Woodward Ave., Sunland, Calif.
FLorida 3-6414 or FLorida 3-7760
- Archy L. Mudgett, 935 E. Galatea St., Azusa, Calif.
EDgewood 4-7506
- Eldred V. Perkins, Phoenix, Arizona,

CONFERENCE ROLL (Cont.)

- Ollie J. Philpot, 24528 Dracea Ave., Sunnymead, Calif.
Phone 653-1136
- Leonard J. Reckard, 5800 E. Beverly Blvd., Los Angeles 32,
California Parkview 2-1900 or
RAYmond 3-1125
- Malcolm R. Robertson, P. O. Box H, Azusa, California
EDgewood 4-4991
- Richard L. Rossow, 3431 Maureen Dr., Sacramento, Calif.
IVanhoe 7-0939
- Emerson P. Smith, 1025 N. 32nd St., Phoenix, Arizona
BRidge 5-9104
- Charles B. Spisak, 1680 Taft Ave., Lemon Grove, Calif.
HOpkins 6-3491
- ✓ George J. Stoddard, 11545 Ranchito St., El Monte, Calif.
GILbert 4-7555 or GILbert 4-4694
- Harold A. Taylor, Box 225, Pine Grove, California
Phone 296-4642
- Pearl H. Taylor, Box 225, Pine Grove, California
Phone 296-4642
- George A. Thomas, 9707 Sunglow St., Rivera, California
OXford 9-2397

ELDERS - RESERVE LIST

- Roma L. Acuna, 415 Chestnut St., Carlsbad, California
Parkway 9-3239
- William G. Butcher, 1345 Skyline Dr., Lemon Grove,
California
- William A. Carnett, 949 Lincoln Ave., El Cajon, Calif.
- George E. Hawley, 1460 Whitefield Road, Pasadena 7,
California
- Donald F. Jones, 625 Coleman St., Los Angeles, Calif.
- Marjory E. Jones, 625 Coleman St., Los Angeles, Calif.
- Edward N. LeJeune, 2908 Poinsettia Dr., San Diego,
Calif. ACademy 2-3727
- Laurence W. Melton, Box 945, Santa Barbara, Calif.
WOodland 5-1706
- Ruth M. Sanchez, P. O. Box 633, Oceanside, California
SARatoga 2-7469

CONFERENCE ROLL (Cont.)

H. Arthur Taylor, Sutter Creek, California

C. DeVere Wilson, 16749 Double Grove, La Puente, Calif.
EDgewood 6-6728

ELDERS - SUPERANNUATE LIST

D. Orval Beach, 410 11th St., Huntington Beach, Calif.
LEXington 6-8259

Francis L. Berkebile, 147 Mildred Way, El Cajon, Calif.

David H. Scott, 1412 Oxford Ave., Pasadena, California
SYcamore 4-0730

ELDERS - UNSTATIONED LIST

Paul H. Hodge, 279 Laurel Dr., Altadena, California
SYcamore 7-2018

Olive L. Hodge, 279 Laurel Dr., Altadena, California
SYcamore 7-2018

CONFERENCE PREACHERS - STATIONED LIST

✓ Russell A. Schumacher, 502 Radway St., La Puente, Calif.
EDgewood 3-6803

Fred Van Tatenhove, Box 231, Chester, California
ALpine 8-2472

Lowell Weller, 1550 Fair Oaks, Pasadena, California

W. Eugene Welliver, 9039 Winter Gardens Blvd., Lakeside,
Calif. HICKory 3-1293

CONFERENCE PREACHERS - UNDER CONFERENCE DIRECTION

Galen L. Anderson, 18232 Beach Blvd., Huntington Beach,
California

Antonio Cortes R, Buena Vista, Cananea, Sonora, Mexico

W. Richard Grizzell, 2429 Leafdale, El Monte, Calif.

Antonio Rios S, Avenida Obregon #92, Cananea, Sonora,
Mexico Phone 5 - 05

CONFERENCE ROLL (Cont.)

SUPPLIES

- ✓ Martin W. Cox, 18821 E. Arrow Highway, Covina, Calif.
EDgewood 2-7009
- Gaylord V. Jordon, 416 W. Gilmore St., Winslow, Arizona
Phone 289-2129
- ✓ Paul A. McCoy, 11610 Orr and Day Road, Norwalk, Calif.
- L. C. Padilla, 1428 Whaley St., Oceanside, California
SAratoga 2-3837
- William E. Plants, P. O. Box 413, Fallon, Nevada
HArrison 3-1736

DIRECTORY OF CHURCH LOCATION

CARLSBAD - 3329 Roosevelt Street

CHESTER - Corner of Frost and Gay Streets - Alpine 8-2472

COVINA (Arrow Highway) - 18821 E. Arrow Highway -
EDgewood 2-7009

EL CAJON (Bostonia) - 1450 Peach Ave. - Hickory 4-3348

EL MONTE - 4735 Peck Road - Gilbert 4-7555 or
Gilbert 4-4694

FAIR OAKS (Lincoln Oaks) - 5517 Dewey Drive
Yorktown 7-7149

FALLON, Nevada - 2 miles east on Highway 50, right 3/4
mile on Crook Road - Harrison 3-1736

GRASS VALLEY - Walker Drive at Butler Road - 273-2142

HUNTINGTON BEACH - 18232 Beach Blvd.

LAKESIDE - River and Park Street - Hickory 3-1293

LA PUENTE - 14614 Prichard St. - EDgewood 3-5020 or
EDgewood 6-6803

LAWNDALE - 4455 W. 168th St. - FRontier 4-6129

LEMON GROVE (Skyline) - 1345 Skyline Drive -
Hopkins 3-0211

NORWALK - 11610 Orr and Day Road - UNiversity 8-6812

PASADENA - Fair Oaks and Howard St. - SYcamore 8-6101

PHOENIX, Arizona - 1025 N. 32nd St. - BRidge 5-9104

SACRAMENTO (Arcade) - 3532 Whitney Ave. -
IVanhoe 7-5123 or IVanhoe 7-0939

SUNLAND - 10614 Leolang St. - FLorida 3-6414 or
FLorida 4-7760

SUNNYMEAD - 13300 Indian Ave. - 653-1136

VISTA - California St. at Chapultepec

WHITTIER - 7435 Norwalk Blvd. - OXFord 5-1276 or
OXford 5-4209

WINSLOW, Arizona - 416 W. Gilmore St. - 289-2129

RECORD OF ATTENDANCE

ELDERS STATIONED LIST

	June	26	27	28
Roma Acuna - - - - -				
Paul Batman - - - - -				
Charles Butcher - - - - -	P	P	P	P
Coral Butcher - - - - -				
Orval Butcher - - - - -	P	P	P	
William Butcher - - - - -	P		P	
Wendell Campbell - - - - -				
William Carnett - - - - -		P	P	
Charles Denison - - - - -	P	P	P	P
Arthur Depew - - - - -				
Esther Depew - - - - -				
Sherwood Eddy - - - - -	P	P	P	P
George Hawley - - - - -	P	P	P	P
Ronald Heavilin - - - - -				
Alice Mae Heavilin - - - - -				
John Henley - - - - -	P	P	P	P
Bud Jillson - - - - -				
Clinton Jones - - - - -	P	P	P	P
Donald Jones - - - - -			P	
Marjory Jones - - - - -				
James Judy - - - - -	P	P	P	P
Laurence Melton - - - - -				
Archy Mudgett - - - - -	P	P	P	P
Eldred Perkins - - - - -	P	P	P	P
Leonard Reckard - - - - -	P	P	P	P
Malcolm Robertson - - - - -	P	P	P	
Richard Rossow - - - - -	P	P	P	P
Ruth Sanchez - - - - -	P		P	
Emerson Smith - - - - -	P	P	P	
Charles Spisak - - - - -				
George Stoddard - - - - -	P	P	P	P
Harold Taylor - - - - -	P	P	P	P
Pearl Taylor - - - - -	P	P		P
Arthur Taylor - - - - -				
George Thomas - - - - -	P	P	P	P
DeVere Wilson - - - - -	P		P	P
Claton Butcher - - - - -	P	P	P	
Edward Eddy - - - - -	P	P	P	P
Lee Hoge - - - - -	P	P	P	P
Edward LeJeune - - - - -	P	P	P	P

RECORD OF ATTENDANCE (Cont.)

SUPERANNUATE LIST

	June	26	27	28
D. O. Beach - - - - -		P P	P	
Francis Berkebile - - - - -				
D. H. Scott - - - - -		P P	P	

UNSTATIONED LIST

Paul Hodge - - - - -	
Olive Hodge - - - - -	

CONFERENCE PREACHERS ON THE STATIONED LIST

Eugene Welliver - - - - -	P	P	P
Fred Van Tatenhove - - - - -	P	P	P

CONFERENCE PREACHERS UNDER CONFERENCE DIRECTION

Galen Anderson - - - - -	P P	P	
Antonio Cortes - - - - -	P	P	P
Ollie Philpot - - - - -	P P	P	
Antonio Rios - - - - -	P P	P	P

D E L E G A T E S

Walter Galusha, ElCajon (Bostonia) - - - -	P P	P	P
Zeora Galusha, ElCajon (Bostonia) - - - -	P P	P	P
Sylvia Pranter, ElCajon (Bostonia) - - - -	P P	P	P
Onesimo Ramos, Carlsbad - - - - -	P P	P	
Edith Miller, Chester - - - - -	P P	P	P
Eulalia Jillson, Covina (Arrow Highway) -	P P	P	P
Harold LaFollette, Covina (Arrow Highway)-	P P	P	P
Max A. Trayer, Covina (Arrow Highway) - -	P P	P	P
Laura Diggs, El Monte - - - - -	P	P	
Mrs. Donald Reynolds, El Monte - - - - -	P P		
Marion Van Tatenhove, El Monte - - - - -	P P	P	
Mabel Kuykendal, Fallon - - - - -			P
Ethel Winkle, Grass Valley - - - - -	P P	P	P
Levita Welliver, Lakeside - - - - -			

RECORD OF ATTENDANCE (Cont.)

	<u>June</u>	<u>26</u>	<u>27</u>	<u>28</u>
Asilea Carnett, Lakeside - - - - -		P		
Mrs. Gordon Stark, LaPuente - - - - -		P		
Oliver Guillaume, La Puente - - - - -		P P	P	P
Vera Campbell, Lawndale - - - - -		P P		
Paul Berk, Lemon Grove (Skyline) - - - -		P P	P	P
Donald Joslyn, Lemon Grove (Skyline) - -		P P	P	P
William Dawsey, Lemon Grove (Skyline) -		P P	P	
Morris Hull, Lemon Grove (Skyline) - - -		P P	P	P
Myrtle Thomas, Norwalk - - - - -		P P	P	P
Virginia Crain, Norwalk - - - - -		P		
Roy McGowen, Pasadena - - - - -		P P	P	P
Luther Emery, Pasadena - - - - -		P P	P	P
Hugh Otto, Phoenix - - - - -		P	P	P
Jack Atchison, Sacramento (Arcade) - - -		P P	P	P
Jack Martin, Sacramento (Arcade) - - - -		P P	P	
Elsie Gordon, San Gabriel - - - - -		P	P	P
Marilyn Butcher, San Gabriel - - - - -				
Maye Hawley, San Gabriel - - - - -		P P	P	P
Ray Parks, San Gabriel - - - - -		P	P	P
Lucille Ranta, Sunland - - - - -		P P	P	P
Faye Coleman, Sunland - - - - -		P P	P	P
Kenneth Wilch, Whittier - - - - -		P P	P	
Theodore Stewart, Whittier - - - - -		P P	P	P
Lorraine Minchow, Lakeside - - - - -				P



O. J. Philpot (left)
was elected to Elders
Orders on Tuesday,
June 27, 1961

Below friends extend
congratulations to
Rev. Philpot and his
family.



JOURNAL OF DAILY PROCEEDINGS

The Thirty-Seventh Annual Session of the California Conference of the Wesleyan Methodist Church of America opened in the chapel of Azusa College, Azusa, California, at 8:30 a.m. June 26, 1961, by singing "Faith of Our Fathers". Rev. James Judy led the devotions reading Romans 12:1, 2, and speaking on being a "living Sacrifice."

The roll was called and 27 elders, 4 Conference Preachers and 31 delegates answered the call of their names.

The Bar of Conference was established as the area within the posts.

The Agenda Committee presented its report. Upon motion it was accepted. See Report No. 1.

The Conference President gave his report. A motion carried that the report be accepted with a rising vote of thanks and appreciation. Sherwood Eddy lead in prayer. See Report No. 2.

Orval Butcher, Emerson Smith, Archy Mudgett, William Dawsey, Kenneth Wilch and Elzie Gordon were nominated for the Nominating Committee. A motion carried that nominations cease. A motion carried to elect those nominated.

Dr. Harold K. Sheets, the Denominational Representative, was asked to preside.

John Henley read the report of the Board of Trustees. It was accepted. See Report No. 3.

James Judy read the report of the Conference Board of Church Extension and Evangelism. It was accepted. See Report No. 4.

The report of the Camp Meeting Board was read by Charles Butcher. A motion carried to adopt the report. See Report No. 5.

DAILY PROCEEDINGS (Cont.)

The Nominating Committee read a report. The following committees were duly elected:

Finance: Sherwood Eddy, Max Trayer, Eulalia Jilson, Ted Stewart, Claton Butcher, Richard Rossow
Memorial: L. J. Reckard, Ruth Sanchez, Laura Diggs, Harold Taylor
Ministerial Character: Clinton Jones, ex-officio, Charles Butcher, Hugh Otto
Courtesy: Eldred Perkins, James Judy
Auditing: Don Joslyn, Vera Campbell, Edward Eddy
Pastoral Relations: Archy Mudgett, Kenneth Wilch, Orval Butcher, William Dawsey, Emerson Smith, Jack Martin

The recommendation that Eugene Bisbee, Conference Auditor, be an outside consultant of the Auditing Committee was approved.

The nomination for Reporter was referred back to the Committee.

There was a recess for 10 minutes.

The reports of Secretaries was taken up.

The Sunday School Secretary, Ollie Philpot, gave his report. It was adopted. See Report No. 6.

The report of the Burial Association Secretary, Arthur Depew, was read. It was accepted. See Report No. 7.

Charles Butcher, the Tithing Secretary, gave his report. A motion carried that it be adopted. See Report No. 8.

The Card Call Secretary, L. J. Reckard, read a report. It was accepted. See Report No. 9.

Malcolm Robertson, the Promotional Secretary of Wesleyan ~~Men~~, read his report. It was accepted. See Report No. 10.

DAILY PROCEEDINGS (Cont.)

The Church Development Secretary, Archy Mudgett, read his report. It was accepted. See Report No. 11.

A motion was made and seconded to elect a committee consisting of Orval Butcher, Clinton Jones and Archy Mudgett to bring in for consideration a statement on the subject of merger of the Wesleyan Methodist Church with other church groups. The motion carried.

Archy Mudgett pointed out the new items in the proposed revision of the Standing Rules.

Adjourned by limitation of time.

SECOND MEETING, MONDAY P.M.

Russell Schumacher led in prayer.

The roll was called.

The minutes were read and approved.

Clinton Jones gave a report of the meeting of the Board of Trustees of Miltonvale Wesleyan College. A motion carried to adopt the report. See Report No. 12.

George Stoddard gave a report as a member of the Board of Trustees of Azusa College. It was adopted. See Report No. 13.

The president appointed Hugh Otto, Lucille Ranta and Sylvia Pranter on the Committee on Itineracy and Elder's Orders. A motion carried to sanction this appointment.

A motion carried to adjourn.

DAILY PROCEEDINGS (Cont.)

THIRD MEETING, TUESDAY A.M.

Devotions were conducted by our President Emeritus, Rev. D. H. Scott. He spoke on the "Maturing of the Saints" and read Eph. 4:1-15. The maturing is based on four "Thats" found in the prayer of Paul in Eph. 3:14-21, "that ye be strengthened with might by his Spirit in the inner man", "that Christ may dwell in your hearts by faith", "that being rooted and grounded in love" and "that ye might be filled with all the fulness of God."

The roll was called.

The Courtesy Committee introduced Rev. and Mrs. Gaylord Jordon, pastors at Winslow, Arizona, and Mr. Eugene Bisbee, Conference auditor and member of the Arrow Highway Church.

The Nominating Committee was excused for committee work.

The report of the Auditor was read. It was accepted. See Report No. 14.

The Treasurer's report was read. It was moved and seconded to accept the report with thanks. The motion carried. See Report No. 15.

The Auditing Committee read a report. It was accepted. See Report No. 16.

A motion carried to extend the time in order to hear necessary reports that must come ahead of the election.

The Camp Meeting Reasurer read his report. It was accepted. See Report No. 17.

The report of the Pension Plan Treasurer was read. It was accepted. See Report No. 18

A motion carried to refer the deficit in the Pension Plan Budget to the Finance Committee.

DAILY PROCEEDINGS (Cont.)

The Ministerial Character Committee read its report. It was adopted. See Report No. 19.

The election of officers was taken up.

Claton Butcher and Fred Van Tatenhove were nominated reading tellers and Eugene Welliver and Lee Hoge distributing tellers. Their nominations were approved.

A motion carried that the first ballot for Vice-President, Secretary and Treasurer be a nominating ballot.

The following received a majority of ballots cast for their respective offices and were declared elected:

Vice-President - Orval Butcher
Secretary - John Henley
Treasurer - Theodore Stewart

A motion carried to hear a reading of the nominations by the Nominating Committee as relates to the Trustees of Miltonvale College. Archy L. Mudgett was nominated as ministerial trustee and Orval C. Butcher as alternate.

Archy L. Mudgett received a majority of ballots cast and was declared elected ministerial trustee of Miltonvale College for a term to end in 1965.

Ballots were cast for alternate ministerial trustee of Miltonvale College and the tellers retired to count the ballots. The count resulted in Orval C. Butcher receiving a majority and he was declared elected.

A motion carried to adjourn.

DAILY PROCEEDINGS (Cont.)

FOURTH MEETING, TUESDAY P.M.

Rev. William Plants, pastor, and Mabel Kuykendal, delegate from the Fallon, Nevada, Church were introduced. Rev. Fred Klatt was also introduced to the Conference.

A motion carried that we retain the same status,,as to representation on the Board of Trustees of Miltonvale College, this year and review it next year.

The Nominating Committee nominated Charles H. Butcher for Ministerial Conference Trustee and Elzie P. Gordon and Max A. Trayer for Lay Conference Trustee. These terms to expire in 1964.

Ballots were cast for Ministerial Trustee and the tellers retired to canvas the ballots.

Ballots were cast for Lay Trustee.

The count of ballots for Ministerial Trustee resulted in Charles H. Butcher receiving a majority and he was declared elected.

A motion carried that the Conference Board of Trustees be enlarged to include one additional lay member. Ballots were cast for the additional member.

Elzie P. Gordon received a majority of ballots cast for first lay trustee and was declared elected.

The Secretaries portion of the Nominating Committee report was read, which is as follows:

Sunday School Secretary - Ollie Philpot
 Tithing Secretary - Emerson Smith
 Educational Secretary - Fred Van Tatenhove
 Transportation Secretary - Richard Rossow
 Card Call Secretary - Galen Anderson
 Promotional Secretary of Wesleyan Men - Jack Martin
 Burial Association Secretary - Harold Taylor
 Church Development Secretary - Archy Mudgett
 Conference Historian - Sue Spisak

DAILY PROCEEDINGS (Cont.)

A motion carried to adopt these nominations by a unanimous ballot.

Edward Eddy was elected as a member of the Sunday School Board. His term to expire in 1963.

The canvas of the ballots for second lay Conference trustee resulted in the election of Max A. Trayer.

A motion carried to accept, with thanks and appreciation of his faithful work, the resignation of Arthur Depew as treasurer of the Pension Plan Board.

The Nominating Committee nominated George Stoddard for the Pension Plan Board and also that he serve as chairman. Charles Butcher was nominated from the floor.

A motion carried to accept the withdrawal of George Stoddard and that nominations be closed.

Charles H. Butcher was elected as member and also chairman of the Pension Plan Board. His term to expire in 1964.

The Nominating Committee made the following nominations which were respectively accepted:

Members of Board of Trustees of Azusa College -
 Archy Mudgett, Theodore Stewart
 Conference Board of Church Extension and Evangelism
 James Judy
 Itineracy and Elder's Orders - Edward Eddy, term
 to expire in 1965.
 Judiciary Committee - Clinton Jones, Orval Butcher,
 Archy Mudgett, James Judy
 Statistical Committee - Eugene Welliver,
 Dorothy Berk

A motion carried to refer to the Standing Rules Committee the task of working out a plan for a Nominating Committee.

DAILY PROCEEDINGS (Cont.)

The Nominating Committee nominated Pearl Taylor for Reporter. A motion carried that she be elected.

The Sunday School Board nominated Russell Schumacher for Child Evangelism Secretary. A motion carried that he be elected.

A motion carried to recess for 15 minutes.

Clinton Jones, with fitting remarks, turned over his position as President to Archy Mudgett. A motion carried to express our thanks to Rev. Jones and family for their sacrifice and labor of love for the Conference.

The Committee on Itineracy and Elder's Orders read the following partial report: We recommend that Ollie Philpot, having fulfilled the requirements for ordination be elected to Elder's Orders and that the Ordination service be tonight. A motion carried to adopt this report.

A recommendation from the Committee on Itineracy and Elder's Orders was referred to the Committee on Standing Rules.

Consideration of the report of the Committee on Standing Rules was taken up.

A motion was made and seconded to adopt SECTION I - ANNUAL CONFERENCE. The motion carried by a two-thirds majority.

A motion was made and seconded to adopt SECTION II - CONFERENCE PRESIDENT. A motion carried to amend Paragraph E by adding "It is recommended that an additional week's salary be paid as expense." The motion, as amended, carried by a two-thirds majority.

A motion was made and seconded to adopt SECTION III - BOARD OF CHURCH EXTENSION AND EVANGELISM. The motion carried by a two-thirds majority.

A motion carried, by a two-thirds majority, to adopt SECTION IV - BOARD OF TRUSTEES.

DAILY PROCEEDINGS (Cont.)

A motion was made and seconded to adopt SECTION V - COMMITTEE ON ITINERACY AND ELDER'S ORDERS. The motion carried by a two-thirds majority.

A motion was made and seconded to adopt SECTION VI - FINANCE. A motion carried to amend Paragraph C by adding "immediately on their issuance" after "to the Conference Treasurer for recording." The motion, as amended, carried by a two-thirds majority.

A motion was made and seconded to adopt SECTION VII - MINISTERS AND LOCAL CHURCHES. A motion carried to amend Paragraph K by inserting "two weeks before Annual Conference" after "Conference Treasurer." The motion, as amended, carried by a two-thirds majority.

Ajourned.

TUESDAY NIGHT

At 7:30 P.M. there was an ordination service. Dr. Harold K. Sheets brought the message speaking on "The Recovery of the New Testament Church." All church workers are builders. The Church is a living temple. Christ died for sinners but also to build the Church. After the message Ollie J. Philpot was ordained to the office and work of an elder in the Wesleyan Methodist Church by the laying on of hands of the elders and by prayer.

FIFTH MEETING, WEDNESDAY A.M.

Fred Van Tatenhove led the devotional period. He read Psalm 139:23, 24 and spoke of "Progress" and "Presence."

The roll was called.

The minutes were read, additions made and approved.

DAILY PROCEEDINGS (Cont.)

Charles Butcher reported the Pension Plan Board had met and elected Arthur Depew as Treasurer of the Board.

The Memorials Committee read its report. L. J. Reckard offered prayer. The report was accepted. See Report No. 20.

The Auditing Committee read a partial report. It was accepted.

The Itineracy and Elder's Orders Committee read its report. It was adopted. See Report No. 21.

The Courtesy Committee introduced Rev. Roy S. Nicholson Jr., who has been serving World Vision in the Tokyo Christian Crusade. He brought a report of the Crusade, its difficulties, battles and victories. A motion carried that Rev. Nicholson be permitted to sit within the bar of Conference as an honorary member.

The meeting was adjourned to meet at the call of the chair.

The meeting was called to order and Lee Hoge led in prayer.

Lorraine Minchow was seated as a delegate in place of Asilea Carnett.

The recommendation of the Committee on Itineracy and Elder's Orders was adopted by a two-thirds majority. See Standing Rules SECTION V - COMMITTEE ON ITINERACY AND ELDER'S ORDERS Paragraph D.

The Pastoral Relations Committee gave a first reading of its report.

A supplementary report of the Board of Church Extension and Evangelism was read. A motion carried that the secretary gather information concerning the president's salary and utilities and they be included in the report. (See item 5 of Finance Committee Report.) The report was accepted. See Report No. 22.

DAILY PROCEEDINGS (Cont.)

The President nominated Orval Butcher and William Marshburn for the Advisory Board. They were elected.

The Standing Rules Committee read the following recommendation concerning the Nominating Committee: "The Nominating Committee shall consist of three elders and three laymen. The elders shall be elected at the time of the election of officers. At the same time the Conference shall name three churches whose delegates, elected to the next session of Conference, shall serve on this Committee. Delegates shall send their credentials to this Committee not later than five days before Conference. The Committee shall then make nominations for Secretaries, Sessions and Standing Committees to be presented to the Conference at the proper time.

The Nominating Committee shall also act as Credentials and Ministerial Character Committee. This Committee shall compile the roll of delegates for Conference. Ministers shall send their Character report to this committee at least five days before Conference." A motion carried by a two-thirds majority to substitute this recommendation for the present Paragraph B of SECTION I - ANNUAL CONFERENCE of the Standing Rules.

A motion carried by a two-thirds majority to delete Paragraph L from SECTION VII - MINISTERS AND LOCAL CHURCHES of the Standing Rules.

The Finance Committee read its report. A motion carried to adopt it. See Report No. 23.

Consideration of the Proposed Constitution of the Wesleyan Methodist Church was taken up. Russell Schumacher and Emerson Smith were asked to serve as reading tellers. Ballots were cast and the count revealed 39 Yes votes and 6 No votes. The Proposed Constitution was declared approved.

The local churches were asked to vote on the Proposed Constitution during the month of September and to report the results to the Conference Secretary.

A motion carried to elect a Nominating Committee according to the Standing Rule just adopted.

DAILY PROCEEDINGS (Cont.)

Archy Mudgett was nominated for first member of the Committee. A motion carried that nominations cease. Archy Mudgett was elected.

James Judy was nominated for second member of the Committee. A motion carried that nominations cease. James Judy was elected.

Charles Butcher and George Stoddard were nominated for third member. A motion carried that nominations cease. Charles Butcher received a majority of votes and was declared elected.

Sunland, Skyline and Arcade churches were nominated for the church whose delegate should be the first lay member. A motion carried that nominations cease. Skyline received a majority of votes and their delegate declared elected.

Arcade and Whittier churches were nominated for the church whose delegate should be second member. A motion carried that nominations cease. Arcade received a majority of votes and their delegate declared elected.

Whittier church was nominated for the church whose delegate should be third member. A motion carried that nominations be closed. The Whittier delegate was elected.

The resignation of Vivian Batman as lay member of the Board of Trustees of Miltonvale College was presented. A motion carried to accept the resignation. The Nominating Committee nominated Kenneth Wilch to fill the unexpired term. A motion carried that nominations cease. Ballots were cast and the tellers retired to count them.

The Committee to study union read a report. It was accepted. See Report No. 24.

The Sunday School Secretary gave awards to the Sunday Schools who won them in the "Goal To Go" contest.

As a result of the count of ballots for Lay member of the Board of Trustees of Miltonvale College George K. Wilch was declared elected.

DAILY PROCEEDINGS (Cont.)

A motion carried that the secretary send Budget sheets to the pastors giving the Budget items.

The final reading was given the report of the Pastoral Relations Committee. A motion carried to adopt the report. See Report No. 25.

The Statistical Committee read its report. A motion carried that the report be received. See Report No. 26.

A motion carried to accept the recommendation that two copies of the Statistical Report be sent to the Conference treasurer and that one be returned to the pastor after Conference.

A rising vote of thanks was given Dr. Harold K. Sheets as an expression of appreciation for his service in moderating the meetings of Conference.

The minutes of today's session were read and corrected.

A motion carried that any unfinished business be left with the Conference Board of Extension and Evangelism or the President and his Advisory Board.

The minutes were accepted.

A motion carried to adjourn sine die.

REPORTS INDEX

<u>REPORT NO.</u>	<u>NAME</u>	<u>PAGE</u>
No. 1 -	Agenda Committee - - - - -	31
No. 2 -	Conference President's Report - - - -	33
No. 3 -	Board of Trustees Minutes - - - - -	34
No. 4 -	Board of Church Extension and Evangelism Minutes - - - - -	46
No. 5 -	Camp Meeting Board Minutes - - - - -	60
No. 6 -	Sunday School Secretary - - - - -	63
No. 7 -	Burial Association Secretary - - - - -	64
No. 8 -	Tithing Secretary - - - - -	64
No. 9 -	Card Call Secretary - - - - -	65
No. 10 -	Promotional Secretary of Wesleyan Men	65
No. 11 -	Wesleyan "500" Plan Secretary - - - -	66
No. 12 -	Trustee of Miltonvale Wesleyan College	67
No. 13 -	Trustees of Azusa College - - - - -	67
No. 14 -	Auditor's Report - - - - -	68
No. 15 -	Treasurer's Report - - - - -	70
No. 16 -	Auditing Committee - - - - -	72
No. 17 -	Camp Meeting Treasurer - - - - -	72
No. 18 -	Pension Plan Report - - - - -	73
No. 19 -	Ministerial Character Committee - - -	74
No. 20 -	Memorials Committee - - - - -	75
No. 21 -	Itineracy & Elders Orders Committee -	75
No. 22 -	Special Committee on Full Time Pres.-	77
No. 23 -	Finance Committee - - - - -	77
No. 24 -	Special Committee on Union - - - - -	79
No. 25 -	Pastoral Relations Committee - - - - -	79
No. 26 -	Statistical Committee - - - - -	82

REPORTS

REPORT NO. I

AGENDA COMMITTEE

We, the Agenda Committee, submit the following agenda for the 1961 Session of Annual Conference:

MONDAY, June 26

8:30 A.M. Devotions - James Judy

Roll Call

Establish Bar of Conference

Report of Agenda Committee

President's Message and Report

Election of Nominating Committee

10:00 A.M. REPORT OF BOARDS (10 minute limit)

Conference Trustees

Conference Board of Church Extension and
Evangelism

Camp Meeting Board

10:30 A.M. Recess

10:40 A.M. REPORT OF SECRETARIES (5 minute limit)

Sunday School Secretary

Burial Association Secretary

Tithing Secretary

Educational Secretary

Card Call Secretary

Promotional Secretary of Wesleyan Men

Transportation Secretary

Church Development Secretary

Conference Historian

Report of Nominating Committee

President's Nomination of Lay Members on

Committee on Itineracy and Elder's Orders

Miscellaneous Business

12:00 P.M. Lunch

1:00 P.M. Committee Organization

REPORT NO. 1 - AGENDA COMMITTEE (Cont.)

2:00 P.M. Prayer - Russell Schumacher
 Roll Call
 Reading of the Minutes
 Reports - Member of Miltonvale Wesleyan
 College Board of Trustees
 Member of Azusa College Trustees
 Adjourn for Committee Work

7:30 P.M. Denominational Address - Dr. H. K. Sheets

TUESDAY, June 27

8:30 A.M. Devotions - David Scott, President Emeritus
 Reports - Auditor
 Camp Meeting Treasurer
 Pension Plan Treasurer
 Conference Treasurer
 Committee on Ministerial Character

Recess

10:00 A.M. Election of Officers
 Complete Report of Nominating Committee

11:30 A.M. Women's Missionary Society Lunch

12:00 P.M. Lunch

2:00 P.M. Prayer - L. J. Reckard
 Reports - Committee on Standing Rules
 Committee on Memorials
 First Reading of Pastoral Relations
 Report

7:30 P.M. Conference Challenge - Dr. H. K. Sheets

WEDNESDAY, June 28

8:30 A.M. Devotions - Fred Van Tatenhove
 Consideration of Proposed Constitution
 Reports - Statistical Committee
 Finance Committee
 Committee on Itineracy and Elder's
 Orders
 Pastoral Relations Committee

REPORT NO. 1 - AGENDA COMMITTEE (Cont.)

12:00 P.M. Lunch

2:00 P.M. Prayer - Lee Hoge
 Miscellaneous Business
 Adjournment of Conference

7:30 P.M. Missionary Rally - Rev. & Mrs. Edward Eddy

THURSDAY, June 29 - Wesleyan Youth Day

9:00 A.M. Business

Afternoon Fellowship and Recreation

7:30 P.M. Rally

N.B. The Women's Missionary Society will have their sessions at the same hours as the Annual Conference.

Respectfully submitted,
 Clinton Jones
 Orval Butcher
 John Henley
 Edna Judy
 Derric Johnson

REPORT NO. 2

CONFERENCE PRESIDENT'S REPORT

I submit a partial report of the labors and activities of this office for the past year.

July 31 - Appointed Lee Hoge supply pastor of Lawndale

August - Supplied Lawndale for three Sundays

August 30 - Visited Fallon, Nevada and found this church desirous of uniting with the California Conference
 September 11 - Accepted Don and Marjory Jones' resignation from El Sereno.

September 12 - Accepted the resignation of Jimmy O'Quinn as pastor of the Winslow Church.

September 25 - Received 24 members into the church at Fallon, Nevada.

REPORT NO. 2 - CONFERENCE PRESIDENT'S REPORT (Cont.)

October 21 - Sponsored Ministerial Buffet Dinner at our home with Dr. Alton Liddick as speaker.

January 8 - Assisted in Corner Stone Laying of Pauma Valley Church.

January 16 - Accepted Gaylord Jordon supply pastor to Winslow

January 23 - Attended Miltonvale School Board Meeting

February 6 - Counsellled with a Church at Escondido relative to joining the California Conference.

April 3 - Received the transfer of credential of Claton Butcher, from the Iowa Conference.

Received the transfer of credential of Edward Eddy from the Indiana Conference

Received the transfer of credential of Lee Hoge from the Iowa Conference

April 6 - Called Special Conference Session to elect president at the request of the Ministers.

April 9 - Accepted the resignation of DeVere Wilson from the La Puente Church.

May 14 - Appointed Russell Schumacher supply pastor of La Puente.

May 22 - Granted W. Keith McRoberts a letter of withdrawal.

Clinton W. Jones

REPORT NO. 3

BOARD OF TRUSTEES MINUTES

Meeting held at Lemon Grove, California, June 29, 1960

PRESENT: Clinton Jones, Charles Butcher, Elzie Gordon, Sherwood Eddy, Kenneth Wilch, Archy Mudgett, John Henley.

ABSENT: William Marshburn

CHAIRMAN: Clinton Jones was elected chairman of the Board of Trustees.

SECRETARY: John Henley was elected secretary.

LA PUENTE PROPERTY: A motion carried to adopt the following resolution:

"Be it resolved that we approve the sale of the Nelson St. Property in La Puente, California, to

REPORT NO. 3 - BOARD OF TRUSTEES (Cont.)

Bernard B. and Natalie W. Bender and Raymond H. and Muriel S. Walter on land contract with our equity of \$1504.71 being secured by a second deed of trust on the two acres with the house and lot at 14715 Nelson Ave. to be released to us by Harry and Anna Fisher."

REQUEST: A motion carried to postpone action on a request of the Pasadena Church for an increase in their loan.

AUTHORITY TO SIGN CHECKS: A motion carried approving the following resolution:

"Resolved that Orval C. Butcher, Donald L. Joslyn and John H. Henley be authorized to sign checks to withdraw funds from the account of the Skyline Church."

HUNTINGTON BEACH: A motion carried that the Conference President and Elzie Gordon investigate the purchase of property in Huntington Beach.

ADJOURN: A motion carried to adjourn.

John Henley, Secretary

Meeting held at Whittier, California, July 12, 1960

PRESENT: Kenneth Wilch, Sherwood Eddy, Clinton Jones, Charles Butcher, William Marshburn, Elzie Gordon, John Henley, Archy Mudgett.

EL SERENO PROPERTY: Charles Butcher reported that an appraiser had appraised the value of the El Sereno Church at \$9,000.00 and the parsonage at \$10,000.00.

Archy Mudgett moved that the parsonage be listed for sale for \$10,000.00 net and the church at \$9,000.00 net with the realtor who appraised the property. Elzie Gordon seconded the motion. All voted aye, none naye. The motion carried.

LA PUENTE PROPERTY: Archy Mudgett made a motion which was seconded by Charles Butcher that DeVere Wilson represent the Conference at the meeting in La Puente to discuss the improving of Sunset Ave. All voted aye, none naye. It was carried.

The escrow fees on the Nelson St. Property were discussed.

Archy Mudgett made a motion to approve a resolution giving Mr. John Miller a thirty day option, dated July 15, 1960, and to expire August 15, 1960, to buy the property at 14715 Nelson St. in La Puente,

REPORT NO. 3 - BOARD OF TRUSTEES (Cont.)

California, for a total price of \$7,500.00 cash and that a letter to this effect be delivered by Sherwood Eddy. The motion was seconded by Sherwood Eddy. All voted aye, none naye. The motion carried.

CONFERENCE PARSONAGE: Sherwood Eddy made a motion and Charles Butcher seconded it that Archy Mudgett investigate if the alley on the Conference parsonage is a dedicated alley and also that he order a fence built on the alley. All voted aye, none naye. The motion carried.

ADJOURNMENT: The meeting was adjourned.

John Henley, Secretary

Meeting held at Whittier, California, August 8, 1960

The Board of Trustees of the California Conference of the Wesleyan Methodist Church of America met in the Whittier Church, August 8, 1960.

SECRETARY PRO TEM: Sherwood Eddy was elected secretary pro-tem.

LA PUENTE PROPERTY: A motion was made, with the concurrence of Elzie Gordon, that \$400.00 be taken from the Conference Parsonage Fund, until it can be paid back, to pay John Miller on property in La Puente. The motion was seconded. All voted aye, none naye. The motion carried.

ADJOURNMENT: The meeting was adjourned.

Sherwood Eddy, Secretary pro-tem

The Board of Trustees of the California Conference of the Wesleyan Methodist Church of America was called to order by the chairman, Clinton Jones, in the Whittier Church Monday, September 12, 1960.

PRESENT: Kenneth Wilch, Charles Butcher, Clinton Jones, Sherwood Eddy, Archy Mudgett, John Henley, Elzie Gordon, William Marshburn

ABSENT: none.

PRAYER: Clinton Jones led in the opening prayer.

LEMON GROVE: Orval Butcher reported that the property adjacent to the Skyline church property in Lemon Grove was for sale and they were investigating the possibility of purchasing it.

LA PUENTE PROPERTIES: A motion was made by William Marshburn and seconded by Archy Mudgett that the

REPORT NO. 3 - BOARD OF TRUSTEES (Cont.)

Conference buy the property at 502 Radway St., La Puente, California. All voted aye, none naye. It was carried.

A motion was made by Archy Mudgett and seconded by William Marshburn that the Conference list for sale the property at 14715 Nelson St., La Puente, California, with the McCall Realty Co. for \$7,500.00 and that Sherwood Eddy be authorized to sign the listing. All voted aye, none naye. It was carried.

A motion was made by William Marshburn and seconded by Archy Mudgett that the payments on the 502 Radway St. property be taken from the New Project Fund during the term of listing of the Nelson St. property. All voted aye, none naye. The motion carried.

EL SERENO PROPERTY: A motion was made by Archy Mudgett and seconded by William Marshburn that Clinton Jones be authorized to sign the listing of the El Sereno properties with Hester V. McCormick. All voted aye, none naye. It was carried.

AUTHORITY TO SIGN CHECKS: Sherwood Eddy made a motion and William Marshburn seconded it to approve a resolution authorizing Clinton W. Jones, the Conference President, and Theodore R. Stewart, the Conference Treasurer, to sign checks on the account of the California Conference of the Wesleyan Methodist Church of America with the West Fullerton Branch of the Bank of America. All voted aye, none naye. It was carried.

ADJOURNMENT: The meeting was adjourned with Archy Mudgett leading in prayer.

John Henley, Secretary

The Board of Trustees of the California Conference of the Wesleyan Methodist Church of America was called to order by the chairman, Clinton Jones, in the Whittier Church October 10, 1960 at 9:15 P.M.

PRESENT: Sherwood Eddy, Charles Butcher, Clinton Jones, Archy Mudgett, John Henley, Elzie Gordon and George Wilch.

ABSENT: William Marshburn

PASADENA: Rev. Lowell Weller, pastor of the Pasadena church, presented need for heaters for the church. Sherwood Eddy made a motion which was seconded by Archy Mudgett that a loan of around \$800.00 by the

REPORT NO. 3 - BOARD OF TRUSTEES (Cont.)

Pasadena church be approved, with the president and secretary of the Conference authorized to sign the necessary papers for the loan and that Elzie Gordon work with Rev. Weller in having the heaters installed. All voted aye; none naye. The motion carried.

LA PUENTE: Charles Butcher made a motion that Sherwood Eddy be instructed to list the property at 14715 Nelson St., La Puente, California, under multiple listing if the McCall Realty Company is unable to conclude the deal. Archy Mudgett seconded the motion. All voted aye, none naye. The motion carried.

EL SERENO: Archy Mudgett made a motion and Sherwood Eddy seconded it that we ratify the agreement to sell the El Sereno parsonage for \$8,000.00 cash and the church property for \$1,000.00 down with a \$4,000.00 first mortgage and a second mortgage of \$3,000.00 in favor of the Conference payable at \$30.00 or more per month at 6% interest. Also included in the motion was the authorization of the president and secretary of the Conference to sign all necessary papers for the completion of the sale. All voted aye; none naye. The motion carried.

Charles Butcher made a motion that the El Sereno church be declared disbanded. Archy Mudgett seconded the motion. All voted aye; none naye. The motion carried.

MINUTES: The minutes of the previous meetings were approved.

ADJOURNMENT: The meeting was adjourned.

John Henley, Secretary

The Board of Trustees of the California Conference of the Wesleyan Methodist Church of America was called to order by the chairman, Clinton Jones, in the Whittier Church Monday, November 14, 1960, at 10:00 P.M.

PRESENT: George Wilch, Archy Mudgett, William Marshburn, Clinton Jones, Sherwood Eddy, John Henley.

ABSENT: Charles Butcher, Elzie Gordon

EL SERENO CHAIRS: The Arrow Highway church offered to buy up to 100, the chairs of the El Sereno church at \$1.75 each. William Marshburn made a motion that the offer be accepted. Sherwood Eddy seconded the motion. All voted aye; none naye. The motion carried.

REPORT NO. 3 - BOARD OF TRUSTEES (Cont.)

CONFERENCE PARSONAGE: William Marshburn made a motion that the Conference sign a collection agreement for payments on the Conference parsonage as presented by Elzie Gordon. George Wilch seconded the motion. All voted aye; none naye. The motion carried.

Archy Mudgett made a motion which was seconded by William Marshburn that the Conference president and secretary be authorized to sign the agreement. All voted aye; none naye. The motion carried.

A motion was made by William Marshburn and seconded by Sherwood Eddy that Archy Mudgett investigate to see if there is objection by nearby property owners to the petition for a permit for multiple dwellings near the parsonage. All voted aye; none naye. The motion carried.

ADJOURNMENT: William Marshburn made a motion that we adjourn. Archy Mudgett seconded the motion. All voted aye; none naye. The motion carried.

John Henley, Secretary

The Board of Trustees of the California Conference of the Wesleyan Methodist Church met at Whittier on Monday evening, December 12, 1960.

PRESENT: C. W. Jones, E. P. Gordon, Charles Butcher, K. Wilch, Sherwood Eddy, William Marshburn, and A. L. Mudgett.

RESOLUTION: It was moved by Mudgett, seconded by Marshburn, that the following resolution be passed:

RESOLVED that the California Conference of the Wesleyan Methodist Church sell the property located at 14715 E. Nelson Ave., La Puente, California, for the sum of \$7500.00 terms of sale to be as follows:

Five hundred dollars cash down payment with a \$4,000.00 loan to be granted by the South Hills Investment Company at a cost of \$300.00 to the conference, said loan to be secured by a First Trust Deed; a further loan of \$3,000.00 to be granted by the conference to be secured by a Second Trust Deed.

RESOLVED FURTHER that the Conference President, Clinton W. Jones, and the Conference Secretary, John H. Henley, be authorized to sign all papers in connection with the execution of said sale. All voted aye, none, naye. It was carried.

REPORT NO. 3 - BOARD OF TRUSTEES (Cont.)

SAN GABRIEL CHURCH PROPERTY: It was moved by Wilch, seconded by Marshburn, that the conference list for sale the property known as the San Gabriel Church, located at 1417 New Avenue, Alhambra, California, for a cash price of \$31,000.00. All voted aye, none, naye. It was carried.

WHITTIER CHURCH SAVINGS ACCOUNT: It was moved by Charles Butcher, seconded by Mudgett, that the Whittier Church be authorized to open a savings account at the Bank of America in Whittier and that the Conference President, Clinton W. Jones, be authorized to sign the signature card for said account. All voted aye, none, naye. It was carried.

ADJOURNMENT: The meeting was adjourned.

Respectfully submitted,

A. L. Mudgett, Secretary Pro Tem

THE Board of Trustees of the California Conference of the Wesleyan Methodist Church of America met at the Whittier Church January 27, 1961.

PRESENT: Sherwood Eddy, Elzie Gordon, Clinton Jones, Archy Mudgett, John Henley, Charles Butcher, George Wilch.

ABSENT: William Marshburn

LINCOLN OAKS: Archy Mudgett made a motion that the following resolution be adopted:

Resolved that the purchase of the three lots south of the Lincoln Oaks church be authorized on the following terms: the purchase price of \$20,000.00 be financed through a loan of \$15000 from Weston and Celeste Gordon, secured by a Trust Deed in favor of the Gordons, with the local church authorized to borrow up to \$4,000, using the parsonage or church as security; (the remaining \$1,000.00 being already on hand for the purchase of the property.)

Be it further resolved that the purchase be made without any restrictions by the seller

And further resolved that the Conference President and Secretary be authorized to sign all necessary papers for the completion of this transaction.

Elzie Gordon seconded the motion. All voted aye; none naye. It was carried.

REPORT NO. 3 - BOARD OF TRUSTEES (Cont.)

RENEWAL OF NOTES: A motion was made by Sherwood Eddy and seconded by Elzie Gordon that the note for \$1,250 payable to Robert D. or Margaret Chamberlain and the note for \$1,250.00 payable to Austin Chamberlain be renewed for three years and that the president and secretary of the Conference be authorized to sign the notes. All voted aye; none naye. It was carried.

ARROW HIGHWAY SAVINGS ACCOUNT: George Wilch made a motion which was seconded by Charles Butcher that the following resolution be approved:

Resolved that the Conference officers be authorized to sign the signature card authorizing Mr. E. I. Bisbee and Rev. Archy Mudgett to sign checks on the savings account of the Arrow Highway church in the Mutual Savings and Loan Association.

All voted aye; none naye. It was carried.

PARSONAGE FENCE: A motion prevailed that Archy Mudgett continue with the project of installing a fence at the rear of the Conference parsonage, using redwood and having a ten foot gate.

ADJOURNMENT: The meeting was adjourned.

John Henley, Secretary

The Board of Trustees of the California Conference of the Wesleyan Methodist Church of America met in the Whittier church March 13, 1961.

PRESENT: Clinton Jones, Charles Butcher, Elzie Gordon, Kenneth Wilch, Sherwood Eddy, John Henley, William Marshburn, Archy Mudgett.

ABSENT: None.

LA PUENTE PARSONAGE: Sherwood Eddy made a motion that the Conference take over the property being purchased by DeVere and Kathryn Wilson at 502 Radway, La Puente, California, and that the Wilsons be reimbursed the \$400.00 they paid on the property and the \$50.00 they paid for taxes. Archy Mudgett seconded the motion. All voted aye; none naye. The motion carried.

REPAY BORROWED FUND: Archy Mudgett made a motion which was seconded by Charles Butcher that \$400.00 be taken from the Church Extension Fund to pay Elzie Gordon for the money borrowed from the Conference Parsonage Fund, August 8, 1960. All voted aye, none, naye. The motion carried.

REPORT NO. 3 - BOARD OF TRUSTEES (Cont.)

TITLE SEARCH - LA PUENTE: Sherwood Eddy made a motion that the President investigate to see if DeVere Wilson had a title search made on the property at 502 Radway, La Puente, and that if he did not to have one made. Kenneth Wilch seconded the motion. All voted aye; none naye. It was carried.

AMENDMENT TO RESOLUTION: Sherwood Eddy made a motion to adopt the following resolution:

Resolved that in the resolution adopted on January 27, 1961, to purchase property in Lincoln Oaks the figure "15,000.00" be stricken out and "18,000.00" be inserted in its place

And further resolved the item "with the local church authorized to borrow up to \$4,000.00 using the parsonage or church as security" be stricken out

And further resolved that the item "the remaining \$1,000.00" be changed to "the remaining \$2,000.00".

Archy Mudgett seconded the motion. All voted aye; none naye. The motion carried.

MINUTES: The minutes of the January 27, 1961, meeting were corrected.

ADJOURNMENT: Sherwood Eddy made a motion, seconded by Kenneth Wilch that we adjourn. All voted aye; none naye. The motion carried.

John Henley, Secretary

The Board of Trustees of the California Conference of the Wesleyan Methodist Church held a meeting in the Arrow Highway Church, Covina, California, on April 6, 1961.

PRESENT: Kenneth Wilch, Charles Butcher, Sherwood Eddy, Archy Mudgett, John Henley, Elzie Gordon, Clinton Jones

ABSENT: William Marshburn

LA PUENTE PROPERTY: A motion was made, seconded and carried to adopt the following resolution:

Resolved that the California Conference sell the property located at 14715 Nelson Ave., La Puente, California, to Earl D. Coffman and Margaret C. Coffman for the sum of \$7,500.00 on the following terms: the buyer agrees to obtain a loan for \$4,000.00 and the Conference will hold a second trust deed and note for balance payable at the

REPORT NO. 3 - BOARD OF TRUSTEES (Cont.)

rate of 1% or more per month including interest at the rate of 7% per annum; the buyer agrees to do \$300.00 worth of termite work on the property and upon supplying a Certificate of completion shall be credited with \$300.00 on the down payment of \$600; the Conference warrants that the survey of the property, plus curbs, gutters, side walk and street improvements on Nelson Ave. will be taken care of by the buyer of the adjoining property, per previous agreement.

And further resolved that the President and Secretary of the Conference be authorized to sign all necessary papers for the completion of the Transaction.

A motion was made and seconded and carried that written permission be given the buyer to occupy the property.

ADJOURNMENT: A motion carried to adjourn.

John Henley, Secretary

The Board of Trustees of the California Conference of the Wesleyan Methodist Church of America held a meeting in the Whittier Church, Whittier, California, May 8, 1961.

PRESENT: Sherwood Eddy, John Henley, Kenneth Wilch, Archy Mudgett, Clinton Jones, Elzie Gordon.

ABSENT: Charles Butcher, William Marshburn.

DEED APPROVED: A motion was made by Sherwood Eddy and seconded by Kenneth Wilch that the following resolution be adopted:

"Resolved, that the Board of Trustees as a Deed Examining Committee for the Conference, after having examined the Corporation Grant Deed drawn in favor of Earl D. and Margaret C. Coffman dated April 6, 1961, approve said deed."

All voted aye; none naye. The motion carried.

ROAD DEED TO LOS ANGELES COUNTY:

"Resolved that the California Conference of the Wesleyan Methodist Church grant a Road Deed to the County of Los Angeles to the following property:

Parcel A. That portion of that certain parcel of land in the Rancho de Bartolo, as shown on map recorded in Book 3 pages 130 and 131 of Patents, in the office of the Recorder of the County of Los Angeles described in Certificate of Title No. ZT-107351,

REPORT NO. 3 - BOARD OF TRUSTEES (Cont.)

recorded in the office of said recorder, within a strip of land 100 feet wide, The center line of which is the center line of Norwalk Boulevard, as said center line is shown on map of tract No.15650, recorded in Book 365, pages 23 to 28, inclusive, of Maps in the office of said recorder.

Parcel B. The southwesterly 22 feet, of above mentioned certain parcel of land in above mentioned rancho

Excepting from said southwesterly 22 feet, that portion which lies within above described Parcel A.

Parcel C. That portion of above mentioned certain parcel of land in above mentioned rancho, within the following described boundaries:

Beginning at the intersection of the Westerly boundary of above described Parcel A, with the northeasterly line of above described Parcel B; thence northwesterly along said northeasterly line 20.00 feet; thence northeasterly in a direct line to a point in said westerly boundary distant northerly thereon 20.00 feet from the point of beginning, thence southerly along said westerly boundary to said point of beginning."

And further resolved that the President and Secretary of the Conference be authorized to sign all papers necessary for the completion of this transaction.

And further resolved that the Conference acknowledge compliance with Zone Exception Case No. 5623."

All voted aye; none naye. The motion carried.

ADJOURNMENT: A motion carried to adjourn.

John Henley, Secretary

The Board of Trustees of the California Conference of the Wesleyan Methodist Church of America held a meeting in the Whittier Church, Whittier, California, on June 5, 1961.

PRESENT: Archy Mudgett, Sherwood Eddy, Kenneth Wilch, Charles Butcher, John Henley.

ABSENT: Clinton Jones, Elzie Gordon, William Marshburn

WHITTIER PROPERTY: A motion was made by Kenneth Wilch and seconded by Sherwood Eddy to approve a Grant of Easement to the Southern California Edison Company granting them permission to move a power pole on the Whittier property. All voted aye; none naye. The motion carried.

REPORT NO. 3 - BOARD OF TRUSTEES (Cont.)

SAN GABRIEL PROPERTY: Charles Butcher made a motion which was seconded by Sherwood Eddy that the treasurer be instructed to pay \$20.00 to Mr. J. B. Blue for the appraisal of the San Gabriel property. All voted aye; none naye. The motion carried.

Sherwood Eddy made a motion which was seconded by Charles Butcher that the following resolution be adopted:

"Resolved that A. L. Mudgett be authorized to sell the San Gabriel property for a minimum price of \$30,000.00"

All voted aye, none, naye. The motion carried.

Sherwood Eddy made a motion which was seconded by Charles Butcher that \$287.17 be borrowed from the Property Trust Fund to pay the balance due on the San Gabriel property. All voted aye; none naye. The motion carried.

LA PUENTE PROPERTY: A motion was made by Sherwood Eddy and seconded by Kenneth Wilch that the Conference grant permission for the Vallecito Water Co. to bring their trucks on the La Puente church property to service their equipment if they agree to tear down their existing tin shed and water tower and put in an underground pump within 60 days. All voted aye, none naye. The motion carried.

Sherwood Eddy made a motion which was seconded by Charles Butcher that the La Puente church be granted permission to remove the partition between the Sunday School rooms on the east side of the church and that Archy Mudgett convey the authorization to the church. All voted aye; none naye. The motion carried.

SUNNYMEAD LOAN: A motion was made by Sherwood Eddy and seconded by Charles Butcher to adopt the following resolution:

"Resolved that Archy Mudgett and John Henley be authorized to negotiate the Sunnymead building loan and that in order to keep faith with William Marshburn, who gave \$8,000.00 and loaned \$32,000.00 to the Sunnymead church, a note be drawn in favor of the New Project Fund to be paid, interest free, on a long term basis at the rate of \$20.00 per month, subject to review by the Conference Board of Church Extension and Evangelism."

All voted aye, none naye. The motion carried.

ADJOURNMENT: A motion carried to adjourn.

John Henley, Secretary

REPORT NO. 4

BOARD OF CHURCH EXTENSION AND EVANGELISM

July 12, 1960

The California Conference Board of Church Extension and Evangelism of the Wesleyan Methodist Church was called to order by the Conference President, Clinton W. Jones, in the Whittier Church on Tuesday, July 12, 1960, at 7:30 P.M.

PRESENT WERE: Clinton Jones, Elzie Gordon, Charles Butcher, John Henley, Kenneth Wilch, Ted Stewart, Archy Mudgett, Orval Butcher, Edna Judy, Sherwood Eddy, William Marshburn, and Devere Wilson.

ABSENT WERE: Derric Johnson

PRAYER: Orval Butcher led in prayer.

SECRETARY: Motion prevailed that Edna Judy be secretary.

MEETING PLACE: Motion was made by Orval Butcher, seconded by Elzie Gordon, that the time and place of meetings be the second Monday of each month, at the Whittier Church at 7:30 P.M. All voted aye, none naye. It was carried.

500 PLAN: Motion was made by Archy Mudgett, seconded by Charles Butcher, that the Conference President approach Rev. Laurence Melton and attempt to work out a feasible plan for promotion. All voted aye, none naye. It was carried.

HUNTINGTON BEACH: Motion was made by Charles Butcher, seconded by William Marshburn, that Galen Anderson be invited to appear before the Board and present the work at Huntington Beach. All voted aye, none naye. It was carried.

SUNNYMEAD TAX BILL: Motion was made by Charles Butcher, seconded by Sherwood Eddy, that the conference treasurer send a check to the Sunnymead Church for one half the amount of the delinquent tax bill. All voted aye, none naye. It was carried.

PASTORS' SUPPORT: Motion was made by James Judy, seconded by Charles Butcher, that beginning August 1, 1960, the pastor of the La Puente Church receive \$40.00 per week salary assistance from the Conference to be paid through the local church; and that this amount be reduced at the rate of \$5.00 per month as follows: First Month - \$40.00 per week; Second Month - \$35.00 per week; Third Month - \$30.00 per week; Fourth Month - \$25.00 per week, Fifth Month - \$20.00 per week; Sixth month - \$15.00 per week.

REPORT NO. 4 - CHURCH EXTENSION AND EVANGELISM (Cont.)

This assistance to continue for six month. All voted aye, none naye. It was carried.

Motion was made by James Judy, seconded by Charles Butcher, that retroactive to July 1, 1960, the pastor of the Sunnymead Church receive \$40.00 per week salary assistance from the Conference, to be paid through the local church; and that this amount be reduced at the rate of \$5.00 per month according to the previous schedule. This assistance to continue for eight months. All voted aye, none naye. It was carried.

PASTORS' REPORTS: Motion was made by Archy Mudgett, seconded by Sherwood Eddy, that the Conference President and Vice President be authorized to draw up the forms for Pastor's reports. All voted aye, none naye. It was carried.

CHURCH ASSETS: Charles Butcher reported that an authorized appraiser had valued the Los Angeles parsonage at \$10,000.00 and the Los Angeles Church at \$9,000.00. The San Gabriel Church, cash price, \$31,000.00.

HONORARY SEAT: Motion was made by Orval Butcher, seconded by Sherwood Eddy, that James Judy be given an honorary seat on the Conference Board of Church Extension and Evangelism. All voted aye, none naye. It was carried.

ADJOURNMENT: Motion prevailed that we adjourn.

Respectfully submitted,
Edna Judy, Secretary

September 12, 1960

The California Conference Board of Church Extension and Evangelism of the Wesleyan Methodist Church was called to order by the Conference President, Clinton W. Jones, in the Whittier Church on Monday, September 12, 1960, at 7:30 P.M.

PRESENT WERE: Elzie Gordon, Clinton Jones, Charles Butcher, Theodore Stewart, DeVere Wilson, Kenneth Wilch, Orval Butcher, John Henley, Archy Mudgett, Edna Judy, James Judy, Derric Johnson and William Marshburn.

PRAYER: Charles Butcher led in prayer

MINUTES: Minutes of July 12, 1960, were approved as printed.

FALLON, NEVADA CHURCH: The Conference President presented the work at Fallon, Nevada. Motion was

REPORT NO. 4 - CHURCH EXTENSION AND EVANGELISM (Cont.)

made by Archy Mudgett, seconded by Charles Butcher, that we encourage the Conference President to organize the Fallon, Nevada, Church and receive it into the California Conference. All voted aye, none naye. It was carried.

SUNLAND CHURCH LOAN: Motion was made by Sherwood Eddy, seconded by DeVere Wilson, that the Sunland Church pay back the Marshburn loan without interest into the "500 Plan", according to the agreement with William Marshburn. All voted aye, none naye. It was carried.

CONFERENCE PARSONAGE LOAN: Motion was made by Archy Mudgett, seconded by James Judy, that we recommend to the Board of Trustees that the amount owed to Elzie Gordon on the conference parsonage be paid. All voted aye, none naye. It was carried.

FUND DISBURSEMENT: Motion was made by Archy Mudgett, seconded by James Judy, that Rev. Weller be reimbursed from the conference expense fund for his trip to Nevada. All voted aye, none naye. It was carried.

TREASURER'S REPORT: Motion was made by Archy Mudgett, seconded by Orval Butcher, that the Treasurer's report be adopted with thanks. All voted aye, none naye. It was carried.

ADJOURNMENT: Motion prevailed that we adjourn.

Respectfully submitted,
Edna Judy, Secretary

October 10, 1960

The California Conference Board of Church Extension and Evangelism of the Wesleyan Methodist Church was called to order by the Conference President, Clinton W. Jones, in the Whittier Church on Monday, October 10, 1960, at 7:30 P.M.

PRESENT WERE: Clinton Jones, Elzie Gordon, Charles Butcher, DeVere Wilson, Kenneth Wilch, Archy Mudgett, John Henley, Edna Judy, James Judy, Sherwood Eddy, and Ted Stewart.

ABSENT WERE: Orval Butcher, Derric Johnson and William Marshburn.

PRAYER: DeVere Wilson led in prayer.

MINUTES: Minutes of September 12, 1960, were approved as printed.

FALLON, NEVADA, CHURCH: The Conference President reported that he had organized the Fallon, Nevada, Wesleyan Methodist Church and received it into the

REPORT NO. 4 - CHURCH EXTENSION AND EVANGELISM (Cont.)

the California Conference.

EL SERENO: The Conference President reported the sale of the El Sereno church and parsonage.

WINSLOW: The Conference President reported the needs of the Winslow Church.

HUNTINGTON BEACH: Galen Anderson, pastor at Huntington Beach, reported the progress of the work and possibilities for a church building.

ADJOURNMENT: Motion prevailed that we adjourn.

Respectfully submitted,
Edna Judy, Secretary

November 14, 1960

The California Conference Board of Church Extension and Evangelism of the Wesleyan Methodist Church was called to order by the Conference President, Clinton W. Jones, in the Whittier Church on Monday, November 14, 1960, at 7:30 P.M.

PRESENT WERE: Clinton Jones, William Marshburn, Archy Mudgett, DeVere Wilson, Kenneth Wilch, Ted Stewart, John Henley, Sherwood Eddy, James Judy & Edna Judy.

ABSENT WERE: Orval Butcher, Derric Johnson, Elzie Gordon, and Charles Butcher.

PRAYER: James Judy led in prayer.

MINUTES: Minutes of October 10, 1960, were approved as printed.

REPORTS: Reports were received concerning the Mission Work in Mexico and the churches in Sunnymead and Norwalk.

"500 PLAN": Motion was made by Sherwood Eddy, seconded by James Judy, that the proposed sanctuary for the Lincoln Oaks Church be the "500 Plan" project for the year. All voted aye, none naye. It was carried.

TREASURER'S REPORT: Motion was made by Archy Mudgett, seconded by DeVere Wilson, that the treasurer's report be adopted with appreciation. All voted aye, none naye. It was carried.

ADJOURNMENT: Motion prevailed that we adjourn.

Respectfully submitted,
Edna Judy, Secretary

December 12, 1960

The California Conference Board of Church Extension and Evangelism of the Wesleyan Methodist Church was called to order by the Conference President, Clinton W.

REPORT NO. 4 - CHURCH EXTENSION AND EVANGELISM (Cont.)

Jones, in the Whittier Church on Monday, December 12, 1960, at 7:35 P.M.

PRESENT WERE: Clinton Jones, Archy Mudgett, William Marshburn, Sherwood Eddy, Ted Stewart, Kenneth Wilch, DeVere Wilson, Charles Butcher, Elzie Gordon, Orval C. Butcher.

ABSENT WERE: James Judy, Edna Judy, Derric Johnson, John Henley.

PRAYER: Orval Butcher led in prayer.

MINUTES: Minutes of the November 14, 1960, meeting were approved.

MOTIONS: Motion was made by Archy Mudgett, seconded by Sherwood Eddy, to endorse the idea of re-location of the Lakeside Wesleyan Methodist Church, recommending further study by both the Conference and church regarding financing. All voted aye, none naye. It was carried.

Motion made by Archy Mudgett, seconded by Theo. Stewart, that the board go on record as favoring the acquiring of the three lots adjacent to the Lincoln Oaks property providing the assumption of such responsibility will not jeopardize the financing of the next unit which is to be built. All voted aye, none naye. It was carried.

Motion was made by Sherwood Eddy and seconded by Archy Mudgett to recommend to the Trustees the selling of the Nelson Street property in La Puente. All voted aye, none naye. It was carried.

Motion made by Orval Butcher and seconded by William Marshburn that Rev. E. V. Perkins be extended thanks for his offer to work in church extension, and further, that the matter of his offer be discussed at the next meeting. All voted aye, none naye. It was carried.

TREASURER'S REPORT: Motion made by Archy Mudgett and seconded by Orval Butcher that the report of the Conference Treasurer be accepted. All voted aye, none naye. It was carried.

ADJOURNMENT: Motion prevailed that we adjourn.

Respectfully submitted,

Orval C. Butcher, Secretary pro tem

REPORT NO. 4 - CHURCH EXTENSION AND EVANGELISM (Cont.)

January 27, 1961

The California Conference Board of Church Extension and Evangelism of the Wesleyan Methodist Church was called to order by the Conference President, Clinton W. Jones, in the Whittier Church on Monday, January 27, 1961, at 7:30 P.M.

PRESENT WERE: Clinton Jones, Orval Butcher, Charles Butcher, Elzie Gordon, John Henley, Ted Stewart, Sherwood Eddy, Archy Mudgett, Kenneth Wilch, Edna Judy

ABSENT WERE: William Marshburn, DeVere Wilson, Derric Johnson, James Judy.

PRAYER: Archy Mudgett led in prayer.

MINUTES: Minutes of the December 12, 1960, meeting were approved as corrected.

LINCOLN OAKS: Claton Butcher reported their option date for purchase of three lots is February 8, 1961. Their local church Advisory Board approved the purchase of the lots. The church also voted unanimously their approval.

Motion was made by Archy Mudgett, seconded by Sherwood Eddy, that we recommend to the Conference Board of Trustees that we authorize the Lincoln Oaks Project of the purchase of the three lots on the south for the purchase price of \$20,000.00; to be financed by a loan by Weston and Celeste Gordon for the amount of \$15,000.00, to be secured by a First Trust Deed; and that we authorize the borrowing of up to \$4,000.00 additional needed to cover the purchase price by mortgage, if necessary. (The remaining \$1,000.00 is already on hand for the purchase of the property.)

We further resolve, that the purchase be made without restrictions by the seller. All voted aye, none naye. It was carried.

LA PUENTE: DeVere Wilson sent word to the Board that he desires to take over the purchase of the La Puente Parsonage Property, which is in his name, and keep the property for his own home. He stated that he would pay what the Conference has already paid on the property.

Motion was made by Charles Butcher, seconded by Archy Mudgett, that this matter be left in the hands of the Conference President, to be presented at the next regular Board Meeting. All voted aye, none naye. It was carried.

REPORT NO. 4 - CHURCH EXTENSION AND EVANGELISM (Cont.)

NEXT MEETING: Conference President to call a February meeting if necessary.

ADJOURNMENT: Motion prevailed that we adjourn.

Respectfully submitted,
Edna Judy, Secretary

March 13, 1961

The California Conference Board of Church Extension and Evangelism of the Wesleyan Methodist Church was called to order by the Conference President, Clinton W. Jones, in the Whittier Church on Monday, March 13, 1961, at 7:30 P.M.

PRESENT WERE: Clinton Jones, John Henley, William Marshburn, Archy Mudgett, Elzie Gordon, Orval Butcher, Ted Stewart, Sherwood Eddy, Kenneth Wilch, Edna Judy, James Judy, Charles Butcher, and Derric Johnson.

ABSENT WERE: DeVere Wilson

PRAYER: William Marshburn led in prayer.

MINUTES: Minutes of January 27, 1961, were approved as printed.

SPECIAL SESSION: Motion was made by James Judy, seconded by Orval Butcher, that the special session be April 6, 1961. All voted aye, none naye. It was carried.

Motion was made by Sherwood Eddy, seconded by Archy Mudgett, that the place for the special session be the Arrow Highway Church. All voted aye, none naye. It was carried.

Motion was made by Orval Butcher, seconded by Charles Butcher, that Clinton Jones, Archy Mudgett, William Marshburn, and Ted Stewart meet with Dr. Sheets in advance of the Special Session and prepare a plan for finance for a full time conference president. All voted aye, none naye. It was carried.

The Conference President, Clinton Jones, stated the special session agenda as follows:

1. The decision to elect a full time conference president.
2. The election.
3. The adoption of a financial plan to support a full time conference president.

Motion was made by Orval Butcher, seconded by Edna Judy, that Archy Mudgett be authorized to set the fee for special session entertainment and to inform the churches of the same. All voted aye, none naye. It was carried.

REPORT NO. 4 - CHURCH EXTENSION AND EVANGELISM (Cont.)

PASTOR'S MOVING EXPENSES - BOSTONIA: Motion was made by Orval Butcher, seconded by Edna Judy that the Conference extend a loan of \$400.00 to Rev. Edward Eddy for moving expense. One half of this loan to be paid by the Bostonia Church; the other half to be paid from funds received at the Annual Missionary Rally. All voted aye, none naye. It was carried.

BACK TAXES - SUNNYMEAD: Motion was made by Sherwood Eddy, seconded by Archy Mudgett, that back taxes in the amount of \$130.47 be paid by the conference treasurer from conference funds. All voted aye, none naye. It was carried.

CORRECTION IN MINUTES: The following motions should appear in the minutes of November 14, 1960. Motion was made by Sherwood Eddy, seconded by James Judy, that the proposed sanctuary for the Lincoln Oaks Church be the 500 Plan Project for this conference year. All voted aye, none naye. It was carried.

LAKESIDE NEW CHURCH LOCATION: Motion was made by Archy Mudgett, seconded by James Judy, that the conference president, Clinton Jones, the Vice-president, Orval Butcher, and Eugene Welliver call on the owner of the proposed 5 acre site concerning its purchase with power to abrogate the conference for the purchase. All voted aye, none naye. It was carried.

INTERESTED CHURCHES: The conference president visited a church at Escondido and one at Pauma Valley and reported their interest in Wesleyan Methodism.

ADJOURNMENT: Motion was made by Archy Mudgett, and seconded by Charles Butcher that we adjourn. All voted aye, none naye. It was carried.

Respectfully submitted,
Edna Judy, Secretary

May 8, 1961

The California Conference Board of Church Extension and Evangelism of the Wesleyan Methodist Church was called to order by the Conference President, Clinton W. Jones, in the Whittier Church on Monday, May 8, 1961, at 7:30 P.M.

PRESENT WERE: Clinton Jones, Elzie Gordon, Orval Butcher, John Henley, Kenneth Wilch, Archy Mudgett, Sherwood Eddy, Ted Stewart, Edna Judy, and James Judy.

ABSENT WERE: De Vere Wilson, Derric Johnson, William Marshburn, and Charles Butcher.

REPORT NO. 4 - CHURCH EXTENSION AND EVANGELISM (Cont.)

PRAYER: Prayer was offered by James Judy

MINUTES: Motion was made by Orval Butcher, seconded by Archy Mudgett, that the minutes of March 13, 1961, be approved. All voted aye, none naye, It was carried.

COMMITTEE REPORT: The special committee on full time conference president reported.

Motion was made by Sherwood Eddy, seconded by Ted Stewart, that the report be adopted as corrected. (see report) All voted aye, none naye. It was carried.

Motion was made by Orval Butcher, seconded by Sherwood Eddy, that the Sunday night offering (June 25, 1961) be used for launching the full time conference presidential program. All voted aye, none naye. It was carried.

LA PUENTE: Orval Butcher reported concerning Russell Schumacher as possible supply pastor for the La Puente Church.

PHOENIX: Eldred Perkins reported and presented a proposed plan for establishing churches in Phoenix, Arizona. (see letter)

Motion was made by Orval Butcher, seconded by Archy Mudgett, that we support Eldred Perkins in the office in which he has been engaged to investigate the opportunity in Phoenix and contact the denomination and other interested sources for their support. Be it further resolved that we endorse the program presented in the accompanying letter from Rev. Perkins. All voted aye, none naye. It was carried.

SUNNYMEAD: O. J. Philpot presented building plans for a proposed Sunday School unit.

Motion was made by Orval Butcher, seconded by Elzie Gordon, that as a board we commend Sunnymead for the projection of their vision and take their request under consideration, attempting to resolve an answer for them by the next board meeting. All voted aye, none naye. It was carried.

SUNNYMEAD: Motion was made by Archy Mudgett, seconded by Sherwood Eddy, that we recognize the gift of the plans provided by Mr. Warner and we request that O. J. Philpot bear our thanks to him. All voted aye, none naye. It was carried.

REPORT NO. 4 - CHURCH EXTENSION AND EVANGELISM (Cont.)

PASADENA: Motion was made that serious consideration be given to the matter of selling the Pasadena property and that the Conference President advise the pastor of said action. All voted aye, none naye. It was carried.

ADJOURNMENT: Motion prevailed that we adjourn.

Respectfully submitted,
Edna Judy, Secretary

REPORT FROM SPECIAL COMMITTEE ON FULL-TIME CONFERENCE PRESIDENT AS REVISED BY CONFERENCE BOARD OF CHURCH EXTENSION AND EVANGELISM - May 8, 1961

Place: Whittier Wesleyan Methodist Church

The following items were discussed in clarifying the responsibilities and privileges of the newly established office of full-time Conference President.

I GENERAL SUGGESTIONS FOR THE WORK OF THE CONFERENCE PRESIDENT IN RELATION TO THE LOCAL CHURCHES.

- (a) Two visits to be made to each local church per year with at least one of these visits at the time of a quarterly or monthly business meeting.
- (b) A projected, tentative schedule of one quarter for the above meetings is to be presented at the time of the Annual Conference.
- (c) An understanding that local churches may call upon the President at any time for assistance which they deem needful.
- (d) Local churches be welcomed to use the Conference President in evangelistic capacity.
- (e) When the Conference President conducts a business meeting or worship service in a given church, it is understood an offering will be received.

II SPECIAL PRIVILEGES GRANTED TO THE CONFERENCE PRESIDENT FOR THE CONFERENCE YEAR 1961-1962.

- (a) Conference President may use two full weeks in evangelism, retaining remuneration from the same without credit to his salary. He may choose any two weeks of such meetings as he may desire.
- (b) If additional time in evangelism outside the bounds of the Conference is deemed advisable, it should be confirmed by the Advisory Board.

REPORT NO. 4 - CHURCH EXTENSION AND EVANGELISM (Cont.)

- (c) Conference President's vacation shall be governed by the same standing rule set forth for pastors in lieu of vacation periods.

III SALARY FOR THE NEWLY ELECTED PRESIDENT SHALL BEGIN JULY 1st, 1961.

IV THE CONFERENCE PRESIDENT IS TO BE ALLOWED \$100.00 PER MONTH RENT FOR A HOUSE OF HIS CHOICE. SPECIAL COMMITTEE RECOMMENDS TO THE CONFERENCE TRUSTEES THE SELLING OF THE PRESENT PRESIDENT'S PARSONAGE.

V TENTATIVE SUGGESTIONS FOR OFFICE EQUIPMENT AND SECRETARIAL HELP

- (a) A new typewriter to be purchased.
- (b) A new legal size, fire resistant file to be purchased.
- (c) Mrs. Archy Mudgett is to be considered part-time secretary to the Conference President with a tentative plan of providing a retainer amounting to \$25.00 per week for the present with secretarial needs to be reviewed at an early date.

VI TRAVEL EXPENSE OF THE CONFERENCE PRESIDENT

- (a) Eight cents per mile will be paid on total car mileage.
- (b) When public transportation is used, expense shall be the total ticket cost.
- (c) The President is requested to keep record of the cost of housing and meals when traveling, this total amount to be paid by the Conference.

VII THE CONFERENCE PRESIDENT IS AUTHORIZED TO ATTEND INTERDENOMINATIONAL CONFERENCES AND CONFERENCES INVOLVING FRATERNAL RELATIONSHIPS AS HE DEEMS EXPEDIENT. THE SAME ARE TO BE SANCTIONED BY THE ADVISORY BOARD; THE EXPENSES INCURRED BY ATTENDING SUCH GATHERINGS ARE TO BE ASSUMED BY THE CONFERENCE

Orval C. Butcher, Secretary

REPORT NO. 4 - CHURCH EXTENSION AND EVANGELISM (Cont.)

184 Vista Del Mar Dr.
 Santa Barbara, Calif.
 May 8, 1961

Dr. Clinton Jones and Members of the Missionary Board
 450 E. Myrtle Dr.
 Glendora, California

Dear Members:

Having completed my Sabbatical from the active pastorate, Mrs. Perkins and I are interested in making some definite plans for the immediate future.

During the past year I have done some work under Conference appointment as field Representative for Church Extension. Several contacts were made with realtors, sub-dividers and other business men, in the interest of church development and locations. To our surprise the Lord has seemingly laid the Phoenix area upon us, the very torrid zone which was the last place in the U.S. we would have considered for a residence. However, the challenge is irresistible when one sees the tremendous sub-divisions, the influx of population and industry literally flowing outward in every direction from the heart of Phoenix.

The same tender inner urge that came in 1945, to pioneer a new church in Waterloo, Iowa, and again in 1954 to found another church in Sacramento, California, is present and with equal intensity for the Phoenix area. With this exception, I feel it must be the founding of churches in place of a single church. We trust with the help of the Conference and Denomination and direction from the Lord, the "desert shall begin to blossom as a rose" for Wesleyan Methodism and the Kingdom of God.

The warm response and genuine interest expressed in the project by Bro. Sheets, Bro. Mitchell, and our own Conference President and several members of the Missionary Board is encouraging. I suggest that the board give official consideration to the challenge and make your desires known to us at your earliest convenience. If you wish to have us work in field of church development in Arizona, I wish to make a few suggestions which I feel will be helpful in reaching the desired goal.

REPORT NO. 4 - CHURCH EXTENSION AND EVANGELISM (Cont.)

1. That an official appointment and title be given as Pastor and Co-ordinator for Church Extension, or a similar title which will be advantageous in business contacts for church properties etc. Letterheads and business cards are of untold value in promotion.
2. That the Denomination be contacted for reassurance of financial support in the Arizona project for the purchase of property and construction.
3. That we be given assistance in moving and housing.
4. That we personally continue to support ourselves during the summer and give time that is necessary to the project.
5. That partial support be given next fall if the project is underway.
6. That effort be made to temporarily give full support when the doors of the new church are opened.
7. That we personally open the new church as a Conference Representative with plans for a resident pastor as soon as the new congregation is strong enough numerically and financially to carry a major part of the responsibility. This would free us for another project which would be under cultivation.

These suggestions I make to avoid a repetition of similar circumstances that we were forced to face in Sacramento, which seriously retarded progress. The pastoral demands were heavy but the \$25.00 salary for two and a half years created a real hazard. This year I have been working hard to liquidate some of the obligations I assumed while founding the new church. Finance may be recovered but years we have for service are numbered.

We want you to know we have no regrets for the expenditures made to bring the Sacramento Church into being. The investment is a good one and we are willing to make the same sacrifices again if necessary. We will be happy if the suggested plan will work to bring several churches into being during the same length of time that it usually takes for one. Your prayerful consideration will be appreciated for this great field of opportunity.

Sincerely,

Eldred and Elvina Perkins

REPORT NO. 4 - CHURCH EXTENSION AND EVANGELISM (Cont.)

June 5, 1961

The California Conference Board of Church Extension and Evangelism of the Wesleyan Methodist Church was called to order by Conference President elect, Archy Mudgett, in the Whittier Church on Monday, June 5, 1961, at 7:30 P.M.

PRESENT WERE: Archy Mudgett, John Henley, Sherwood Eddy, Edna Judy, James Judy, Charles Butcher, Ted Stewart, Kenneth Wilch

ABSENT WERE: Clinton Jones, Elzie Gordon, William Marshall, DeVere Wilson, Orval Butcher, Derric Johnson

PRAYER: Edna Judy led in prayer.

MINUTES: The minutes of May 8, 1961, were approved with the addition of the special committee report on full time conference president.

SAN GABRIEL CHURCH: Motion was made by James Judy, seconded by Kenneth Wilch, that we recommend to the Conference Board of Trustees that Archy Mudgett be authorized to sell the San Gabriel Church. All voted aye, none, naye. It was carried.

LA PUENTE: Russell Schumacher reported.

Motion was made by Sherwood Eddy, seconded by Charles Butcher, that we recommend to the Conference Board of Trustees that we grant permission for the Vallecito Water Company to bring their trucks on church property to service equipment if they agree to tear down existing structures and build underground within 60 days. All voted aye, none naye. It was carried.

PHOENIX: Eldred Perkins reported. There are two good locations which can be held by an earnest payment.

Motion was made by Sherwood Eddy, seconded by Charles Butcher, that we recommend that the denominational officials give serious consideration to the acquisition of at least one of the properties. Black Canyon area and Sun City area in Phoenix. All voted aye, none naye. It was carried.

NORWALK: Motion was made by Sherwood Eddy, seconded by Ted Stewart, that we loan \$675.00 to the Norwalk church, interest free, to be paid back to the conference in the amount of \$50.00 per month. Archy Mudgett is authorized to execute the papers. All voted aye, none naye. It was carried.

SUNNYMEAD: Motion was made by Ted Stewart, seconded by Kenneth Wilch, that we recommend to the Conference

REPORT NO. 4 - CHURCH EXTENSION AND EVANGELISM (Cont.)

Board of Trustees that Archy Mudgett and John Henley be authorized to negotiate the Sunnymead building loan and that in order to keep faith with William Marshburn who gave \$8,000.00 and loaned \$32000 to the Sunnymead church, that a note be drawn in favor of the New Projects Fund to be paid back interest free on a long term basis at the rate of \$20.00 per month, subject to review by this board.

STANDING RULES: Motion was made by Sherwood Eddy, seconded by Edna Judy, that Archy Mudgett select a committee of two for revision of the Standing Rules with power to act as representatives of this board presenting these recommendations to the Annual Conference. All voted aye, none nay. It was carried.

CONFERENCE: Motion was made by Sherwood Eddy, seconded by Ted Stewart, that Archy Mudgett be requested to attend the final planning session of the agenda committee and Camp Meeting Board in preparation for Conference. All voted aye, none naye. It was carried.

ADJOURNMENT: Motion prevailed that we adjourn.

Respectfully submitted,
Edna Judy, Secretary

REPORT NO.5

CAMP MEETING BOARD

Camp meeting Board meeting November 28, 1960, at 450 E. Myrtle Ave., Glendora, California.

Meeting called to order by Chairman, Rev. Clinton Jones.

Prayer by Rev. DeVere Wilson

Rev. James Judy gave Treasurer's report - Cash on hand \$146.95.

Charles Butcher elected Secretary for the coming year.

Election of Treasurer, postponed.

Discussion of time and place of next board meeting -

Agreed to meet after the New Year on the third or fourth Monday - Place, El Monte Church.

Discussion of Annual Conference and Camp Meeting -

Time - following School Closing or June 18th.

(same to be cleared with General Board)

Place - in question; A local Church, Azusa College, or Pilgrim Holiness Ground.

REPORT NO. 5 - CAMP MEETING BOARD (Cont.)

Committee for investigation - Chairman, Clinton W. Jones, DeVere Wilson, Chas. Butcher
 Discussion as to Denominational Representative.
 Chairman to suggest evangelistic emphasis thru the entire Session.
 Committee to read Report 23 of Conference Minutes of 1960.
 Adjourned by motion - James Judy dismissing in prayer.
 Committee Members present - Clinton W. Jones, Max Trayer, DeVere Wilson, William Marshburn, James and Edna Judy, Chas. H. Butcher.
 Absent - Keith McRoberts, George Stoddard, Derric Johnson

Secretary, Chas. H. Butcher

Camp Meeting Board met February 27, 1961 - 7:30 P.M. at El Monte Church

Meeting called to order by President, Clinton W. Jones
 Prayer by Max Trayer
 Minutes read and approved.
 Treasurer - James Judy reported - \$346.95 Cash on hand
 Date set for Annual Conference and Camp - June 25-29, 1961.
 Place - Rev. Stoddard made the Motion that the Session be held at Azusa College Grounds, seconded by Max Trayer, Motion carried.
 Registration and Housing Committee - Ron and Moyna Nash Malcolm Robertson and Max Trayer.
 Cook - ~~Pres.~~ Jones to check with Azusa cooks
 Song Leader - Orval C. Butcher
 Derric Johnson & Youth leader, and to arrange for Youth Day, Thursday, June 29th.
 Denominational representative - Our Evangelist.
 Max Trayer to contact Archy Mudgett on printing advertising.
 Next meeting at El Monte, March 20th, 7:30 P.M.
 Secretary to send out cards to board members.
 Adjourned by Motion - Prayer - C. H. Butcher
 Members present - Jones, Stoddard, Max Trayer, Edna and James Judy, C. Butcher
 Absent - Derric Johnson, Wm. Marshburn, DeVere Wilson Keith McRoberts.

Secretary, Chas. H. Butcher

REPORT NO. 5 - CAMP MEETING BOARD (Cont.)

Camp Meeting Board met at El Monte Parsonage - 7:30 Monday evening March 20, 1961

In the absence of Pres. Jones, C. H. Butcher was asked to call the meeting to order.

Edna Judy opened with prayer.

Present - Butcher, Trayer, Stoddard, James & Edna Judy

Absent - Jones, Wilson, McRoberts, Marshburn

Evangelist - Dr. H. K. Sheets

Thru C. W. Jones - report - Azusa College facilities available 4 days - at a charge of \$275.00

Motion - by Max Trayer, seconded by Rev. Stoddard that the Treasurer be instructed to pay College \$50.00 in advance - to Azusa College on rental price of \$275.00. Motion carried.

Max Trayer reported that Archy Mudgett will care for the printing of advertizing; Committee, Jones & Mudgett.

BOARD -

Adults per term - - - 8.00
 Adults per day - - - 2.25
 Children per term (5-12) 4.50
 Children per day (5-12) 1.25
 Children under 5 (term) 2.00
 Children under 5 (day) .75

ROOMS -

Beds-adjoining bath - 4.00
 per day - - - 1.50
 Beds without bath - - 3.00
 per day - - - 1.25

Breakfast .50; lunch .75; Dinner \$1.00.

Motion by James Judy seconded by Max Trayer that these rates apply to the coming session. Motion carried.

Motion prevailed that only 20 young people be employed as dining hall helpers, each of these to pay registration fee - \$3.00. The selection of said workers to be left in hands of Youth President, Derric Johnson. Other youth to pay full fee.

Curfew - 10:00 P.M. - all to be in rooms by 10:30.

Features of Program - Sunday night sermon, Clinton W. Jones

Monday night - Evangelist - Dr. Sheets

Tuesday night - Evangelist - Dr. Sheets

Wednesday night - Missionary Rally

Thursday - Youth Day

Dining supervisor

Kitchen and food supplies - Sherwood Eddy and Kenneth Wilch

Notification to be given to named personnel selected by secretary

Adjourned by motion - Prayer - Rev. Stoddard.

C. H. Butcher, Secretary

REPORT NO. 5 - CAMP MEETING BOARD (Cont.)

Camp Meeting Board met March 27, 1961 at El Monte Church Prayer Room - Monday, 7:30 P.M.

Meeting called to order and prayer by Chairman, Rev. C. W. Jones.

Minutes read and approved.

Review of actions and plans for the Conference Next.

Adjourned by Motion, Prayer - Max Trayer.

C. H. Butcher, Secretary

June 13, 1961

Camp Meeting Board met with the Agenda Committee at Arrow Highway Wesleyan Church, Archy Mudgett, Chairman.

REPORT NO. 6

SUNDAY SCHOOL SECRETARY

In the interest of Conference S.S. I have traveled approx. 5,589 miles this year. 1789 by auto in the state of Calif. I also sent out a total of 302 letters to our churches. Held three S.S. banquets as kick off Rallies for our Goal To Go program in the "Spring Loyalty Campaign". One banquet for the San Diego Area held at the Skyline Church with 73 total attendance. One in the Los Angeles Area at the Arrow Hwy. church with an attendance of 75. And one in the Sacramento area at the Arcade church with 45 in attendance.

We encouraged attendance at the Leadership Training Institute at Forrest Home last July. Also sent letters concerning Rally Day. Urged attendance to the GLASS convention in L.A. Attended the National Sunday School Convention in St. Louis at the request of Dr. Kindschi and on approval of our S.S. board. There were denominational meetings for Conference S.S. Sec. held in conjunction with the convention. These were under the direction of our S.S. office in Marion with Dr. Kindschi in charge.

Sponsored the "Goal To Go" program during our "Spring Loyalty Campaign." We had an average attendance of 3927 per Sunday for the six week period.

REPORT NO. 6 - SUNDAY SCHOOL SECRETARY (Cont.)

Planned a Junior Youth Camp last year for the Conference but had to cancel at the last minute because of the lack of interest by the churches.

All these activities were discussed and approved by our own Conference Sunday School Board.

Respectfully submitted,
O. J. Philpot, Sunday School Secretary

REPORT NO. 7

BURIAL ASSOCIATION SECRETARY

The Secretary of the Burial Association submits the following report:

At the first of the year I received word from the Secretary, Rev. J. C. Pickett, to have each member send their remittances direct to him and not to send any monies through me. I did so, so there is no financial report to give; and I do not know the number of members here in California.

Sincerely,
Arthur E. Depew, Secretary

REPORT NO. 8

TITHING SECRETARY

To the California Annual Conference, 1961:

Storehouse tithing is the final foundation for the church of God recorded in the Old Testament and positively declared in the New Testament by Christ, the head of the Church.

The Wesleyan Methodist Church of America acknowledges this God's plan for the advancement of the Church of Jesus Christ.

The general tithing secretary is the editor of the Wesleyan and has at hand and is able to furnish material on this subject that is so vital to the church. Secondly, each Conference to elect a tithing secretary; each local church a tithing secretary who is a member of the

REPORT NO. 8 - TITHING SECRETARY (Cont.)

Board of Stewards; at each session of the General and Annual Conference there is to be room given for a tithing service emphasizing this great storehouse plan.

On the pastor's report blank, the pastor's personal responsibility is to answer the following: 1. Have you fully tithed your income? 2. Have you faithfully presented this subject to the congregation?

Membership tithing as reported in our Conference minutes from 1953 to 1960:

<u>Year</u>	<u>Total Membership</u>	<u>Number of Tithers</u>
1953	662	335
1954	451	262
1955	473	282
1956	837	368
1957	999	363
1958	1114	359
1959	1189	391
1960	1257	368

Pastors, watch your conference minutes for this session of 1961 and let us get a truer picture of those who are supporting our church, local and general interests.

Respectfully,
Charles H. Butcher

REPORT NO. 9

CARD CALL SECRETARY

There has been no official activity on the part of the Card Call Secretary. We have faithfully met our own obligations to the Card Call Plan however. "That good thing which was committed unto thee keep." II Tim. 1:13

L. J. Reckard

REPORT NO. 10

PROMOTIONAL SECRETARY OF WESLEYAN MEN

There has been a minimum of activity by individual churches in Men's Fellowship activity with no Conference wide general meetings. As example of individual church

REPORT NO. 10 - PROMOTIONAL SECRETARY, WESLEYAN MEN (Cont.)

activity the Arrow Highway men sponsored a Father-Son Banquet this year.

Malcolm R. Robertson

REPORT NO. 11

CHURCH DEVELOPMENT SECRETARY

California Conference of the Wesleyan Methodist Church
935, East Galatea St., Azusa, California

I have examined the accounts and records of the California Conference Wesleyan "500" Plan for the twelve months ended May 31, 1961. My examination was made in accordance with generally accepted auditing standards and included such tests of the accounting records and such auditing procedures as I considered necessary in the circumstances.

At the date of this report signed notes have not been received to support the unsecured loans.

There are signed notes in the secretary's files supporting the loans secured.

In my opinion the statement of cash on hand and assets present fairly the cash position of the California Conference Wesleyan "500" Plan at May 31, 1961, in conformity with generally accepted accounting principles applied on a basis consistent with that of the preceding year.

Eugene I. Bisbee
Public Accountant

RECEIPTS

Balance carried forward	\$	00.00
From Contributions		820.80
From Interest Payments of loans . .		70.00
From Principal Payments on loans . .		<u>265.00</u>
TOTAL	\$	1,155.80

DISBURSEMENTS

To Conference Treasurer	\$	<u>800.00</u>
BALANCE ON HAND, June 1, 1961 . . .	\$	355.80

REPORT NO. 11 - CHURCH DEVELOPMENT SECRETARY (Cont.)

ASSETS

UNSECURED LOANS

#1 Winslow, Arizona	\$ 7,892.11 + interest
#2 La Puente, California . .	4,972.24 + interest
#7 Lincoln Oaks Project . .	1,000.00

SECURED LOANS

#3 Sunnymead, California . .	2,371.96 + interest
#4 Sunland, California . . .	7,935.00
#5 Lincoln Oaks Project . .	1,200.00
#6 Lincoln Oaks Project . . .	500.00
TOTAL ASSETS	\$25,871.31

Respectfully submitted,
A. L. Mudgett, Secretary

REPORT NO. 12

TRUSTEE OF MILTONVALE WESLEYAN COLLEGE

Good progress is recorded at Miltonvale. The campus spirit is exceptional. The campus is clean and inviting and faculty and students alike are gracious.

Faculty salaries were increased. The trustees recommended that there be a limited inter-collegiate athletic program for the school. This recommendation was to the Board of Administration.

The trustees also granted the college permission to use professional fund raisers for a canvas.

Clinton W. Jones.

REPORT NO. 13

TRUSTEES OF AZUSA COLLEGE

The past year the following members of the Southern California Conference of the Wesleyan Methodist Church have served on the Board of Trustees of Azusa College: Archy L. Mudgett, Orval C. Butcher, Max A. Trayer, and George J. Stoddard. It has been a privilege to be associated with college officials, pastors and laymen of

REPORT NO. 13 - TRUSTEES OF AZUSA COLLEGE (Cont.)

other church groups, and observe together the college mechanisms, and to try to assist in keeping these at a high level of function.

It has been a good year for the college. General enrollment is up. Thirty-one students were graduated, six of whom were Wesleyan Methodists, making about 20% of the total. Azusa College standards are such that she can well be trusted with the training of more of our West Coast Youth.

The College has moved closer to the goal of complete Accreditation.

Many property improvements have been made. Extensive redecoration has been done. Three new dormitories are in the process of completion. The new Gymnasium is doing yeoman duty as a many-purpose unit.

The financial needs and problems which are ever present in a Christian College have been met realistically by President C. P. Haggard and Business Manager, Mr. D. L. Cook. Much of the usual deficit spending required through a college year, has been eliminated by making adjustments in staff and purchasing, but without lowering the efficiency of the departments involved.

Azusa College, training school for Christian youth, is deserving of our prayerful support.

Respectfully submitted,
George Stoddard

REPORT NO. 14

AUDITOR

California Conference of the Wesleyan Methodist Church
935 E. Galatea St., Azusa California

I have examined the accounts and records of the California Conference of the Wesleyan Methodist Church, a California corporation, for the twelve months ended May 31, 1961. My examination was made in accordance with generally accepted auditing standards and included such tests of the accounting records and such other auditing procedures as I considered necessary in the circumstances.

REPORT NO. 14 - AUDITOR (Cont.)

Comments:

I wish to thank your treasurer, Mr. Stewart, for his co-operation in connection with the audit of your records and to congratulate him on the excellent job he has done this past year in maintaining the records for the Conference.

In order to do a good job one must have adequate tools to work with; therefore, I recommend that the present single, hybrid accounting system be scrapped and an adequate system be installed. The Conference has grown a great deal since the present system was installed and no doubt fifteen years ago the system was adequate, but with the activities of today the system is antiquated and inadequate.

The present system makes no provision for the recording of the assets acquired and the liabilities assumed. For example: If you were to ask your treasurer to furnish the figures pertaining to the cost of the president's parsonage and the subsequent improvements thereto it would be impossible for him to do it without a great deal of analyzing of the cash records. It is also impossible to know the operating cost of this property with the present records. The present records do not reveal the liability against the parsonage. Under the present system we have to accept the mortgagor's records.

An adequate accounting system will give complete control over real and personal property acquired, liabilities assumed, and items of income and expense.

The new year is just starting and is an ideal time to revamp the system.

In my opinion the accompanying statements fairly present the cash position of the California Conference of the Wesleyan Methodist Church at May 31, 1961, in conformity with generally accepted accounting principles applied on a basis consistent with that of the preceding year.

Respectfully submitted,
Eugene I. Bisbee
Public Accountant

Covina, California
June 23, 1961

REPORT NO. 15

79

CONFERENCE TREASURER

STATEMENT OF CASH RECEIVED AND DISBURSED CONFERENCE YEAR JUNE 1, 1960 THRU MAY 31, 1961

<u>BUDGET FUNDS</u>	<u>Balance On Hand</u> <u>June 1, 1960</u>	<u>Received</u> <u>6-1-60 thru</u>	<u>Disbursed</u> <u>5-31-61</u>	<u>Balance On Hand</u> <u>May 31, 1961</u>
GENERAL CONFERENCE				
World Missions	-0-	\$ 535.68	\$ 535.68	-0-
Church Extension	-0-	677.88	677.88	-0-
Education	-0-	1,371.84	1,371.84	-0-
Hephzibah Children's Home	-0-	124.20	124.20	-0-
Superannuate Pension Plan	-0-	2,219.35	2,219.35	-0-
Administrative	-0-	518.87	518.87	-0-
Australia	-0-	58.26	58.26	-0-
General Conference Expense	-0-	207.42	207.42	-0-
Board of Administration Expense	-0-	63.05	63.05	-0-
General Sunday School	-0-	331.51	331.51	-0-
Brainerd Indian School	-0-	119.01	119.01	-0-
TOTALS - General Conference	-0-	6,227.07	6,227.07	-0-
CALIFORNIA CONFERENCE				
Conference Extension	\$ 111.74	31,284.09	30,301.87	\$ 1,083.96
Conference Work Fund	642.45	979.23	1,070.78	550.90
Camp Meeting Fund	355.03	422.87	777.90	-0-
Conference Sunday School	106.23	92.14	324.26	(125.89)

Conf. President's Salary	183.25	1,951.78	2,253.29	(118.26)
Conf. President's Expense	80.13	1,324.95	1,979.99	(574.91)
Conference Parsonage Fund	573.20	1,024.30	1,820.13	(222.63)
Conf. Pres. Parsonage Rent	-0-	1,320.00	1,077.52	242.48
Azusa College	-0-	105.81	84.30	21.51
TOTALS - Calif. Conf.	2,052.03	38,505.17	39,690.04	867.16
TOTAL BUDGET FUNDS	2,052.03	44,732.24	45,917.11	867.16

NON-BUDGET FUNDS - CALIF. CONF.

Wesleyan "500" Plan	493.78	800.00	1,140.72	153.06
Property Trust Fund	-0-	7,882.73	1,083.34	6,799.39
New Project Fund	650.91	7,000.00	7,589.50	61.41
Funds Rec'd for Forwarding	140.00	1,640.00	1,780.00	-0-
TOTAL - Non-Budget Funds	1,284.69	17,322.73	11,593.56	7,013.86

GRAND TOTALS - All Funds	\$3,336.72	\$62,054.97	\$57,510.67	\$7,881.02
---------------------------------	-------------------	--------------------	--------------------	-------------------

May 31, 1961 Balance in Checking Account: Bk. of America, W. Fullerton	\$ 7,822.60
May 31, 1961 Balance in Savings Account: Amer. Savings & Loan Assn., La Puente	58.42

TOTAL CASH ON DEPOSIT, May 31, 1961	\$ 7,881.02
--	--------------------

Theodore R. Stewart,
Conference Treasurer

REPORT NO. 16

AUDITING COMMITTEE

We the members of the auditing committee have examined the books of the conference Camp Meeting, Pension Fund, and Wesleyan Youth, and find them to appear in order with the following observations:

Camp Meeting: note canceled check #204 issued in the amount of \$50.00 to Azusa College and the bank statement for that period missing. In reconciling the bank account it is apparent that the check has been cleared through the bank. Also note that the receipts for Allan Mitchell fund were disbursed to the Virgil Mitchell fund.

Wesleyan Youth: Note that it appears check #106 in the amount of \$25.25 was recorded as a conference dues disbursement whereas it was actually issued to cover a bad check received in the prior year and not cleared at the time the funds were transferred to another bank. The conference dues receipts and disbursements are therefore overstated in the amount of \$25.25. We also note that the total amount of receipts should be \$3,110.44 instead of \$3,010.44 as entered on the statement. The bank reconciliation shows the balance to be \$152.51 as shown.

Pension Fund: Note that the receipts are included through the period of June 19th. and disbursements through the period of June 16th. Also that the receipts as stated in the books in the amount of \$430.39 is apparently correct whereas the statement was in the amount of \$430.09. The bank reconciliation shows the balance to be \$46.11 as stated.

In examining the books the committee used the standard auditing procedure and such tests as seemed necessary to complete the audit.

Don L. Joslyn, Chairman
Edward L. Eddy

REPORT NO. 17

CAMP MEETING TREASURER

RECEIPTS

Balance forward June 1, 1960 - - - - -	\$ 401.52
Camp Offerings, Registrations & Meals - -	966.49
Budget - - - - -	355.03
Allan Mitchell Memorial offering - - - -	<u>35.00</u>
TOTAL RECEIPTS - - - - -	<u>\$1,758.04</u>

REPORT NO. 17 - CAMP MEETING TREASURER (Cont.)

DISBURSEMENTS

Skyline Church for Conf. & camp	\$ 850.60
A. L. Mudgett - Printing	90.00
H. K. Sheets - Denominational Representative	300.00
Conf. Treas. - Pension Plan Deficit	162.99
Allan Mitchell - Memorial Fund	35.00
Azusa College - Campus deposit	50.00
TOTAL DISBURSEMENTS	\$1,488.59

BALANCE ON HAND, June 1, 1961 - \$ 269.45

Respectfully submitted,
James H. Judy, Treasurer

PENSION PLAN

The treasurer of the Pension Plan submits the following:

<u>MEMBERSHIP:</u>	Present	9
	Transferred	1
	Dropped by member request	2
	Accounts frozen	2

FINANCE:

R E C E I P T S

Cash on hand, work fund	\$ 24.82
Personal 1½%	430.39
By Receipts: Personal 1½%	23.75
Budget 1960-61	1,796.00
Membership Notes	55.31
Membership Notes, Interest	4.69
TOTAL RECEIPTS	\$ 2,334.96

D I S B U R S E M E N T S

Cash, Personal 1½%	\$ 409.10
By Receipts: Personal 1½%	23.75
Budget	1,796.00
Membership Notes	55.31
Membership Notes, Interest	4.69
TOTAL DISBURSEMENTS	\$ 2,288.85

REPORT NO. 18 - PENSION PLAN (Cont.)

Balance on Hand - Work Fund - - - - -	\$ 24.82
Personal 1 $\frac{1}{2}$ % - - - - -	21.29

GRAND TOTAL - - - - -	\$2334.96
-----------------------	-----------

Budget Assigned - - - - -	\$ 1,954.00
---------------------------	-------------

Budget Raised - - - - -	1,796.00
-------------------------	----------

DEFICIT - - - - -	\$ 158.00
-------------------	-----------

BENEFITS:

D. H. Scott - - - - -	\$ 840.00
-----------------------	-----------

Respectfully submitted,
Arthur E. Depew

REPORT NO. 19

MINISTERIAL CHARACTER COMMITTEE

The character of the following elders has been passed:

Sherwood Eddy	L. J. Reckard	Richard Rossow
Charles Butcher	Coral Butcher	Orval Butcher
William Butcher	C. W. Denison	Archy L. Mudgett
Lee R. Hoge	George Stoddard	James Judy
E. P. Smith	DeVere Wilson	John Henley
Edward Eddy	Derric Johnson	Claton Butcher
Roma Acuna	Wm. Carnett	Arthur Depew
Esther Depew	Charles Spisak	Ronald Heavilin
Alice Mae Heavilin	Ruth Sanchez	George Thomas
Harold A. Taylor	Pearl H. Taylor	George Hawley
Malcolm Robertson	E. V. Perkins	L. W. Melton
Clinton W. Jones	Donald Jones	Marjory Jones
Paul J. Batman		

Respectfully submitted,
Clinton W. Jones
Elzie P. Gordon
Charles Butcher
Hugh K. Otto, Sec'y

The characters of the following conference preachers has been passed: Fred Van Tatenhove Ollie Philpot
Eugene Welliver Galen Anderson

Respectfully,
Ministerial Character Committee

REPORT NO. 19 - MINISTERIAL CHARACTER COMMITTEE (Cont.)

PERIODICALS

Wesleyan Methodists - -	34
Wesleyan Missionary - -	26
Wesleyan Youth - - - -	16

Six (6) churches paid in full budget.

REPORT NO.20

MEMORIALS COMMITTEE

After a very careful survey it was discovered that the Carlsbad Church had lost a very faithful member through death. She will be greatly missed by her family who had learned to count upon her prayers.

She will also be missed in the church where she filled an important place.

"Favour is deceitful, and beauty is vain: a woman that feareth the Lord, she shall be praised. Give her the fruit of her hands; and let her own works praise her in the gates." Proverbs 31:30-31

The conference pauses in its activities to pay due respect to the memory of:

Mrs. Josefa Tarango

L. J. Reckard
Ruth Sanchez
Harold Taylor
Laura Diggs

REPORT NO.21

ITINERACY AND ELDER'S ORDERS

We recommend:

1. That the following individuals continue to study and travel under the direction of the conference:

Eugene Welliver	Antonio Cortes
Galen Anderson	Antonio Rios
Fred Van Tatenhove	
2. That the following individuals continue to study under the direction of the conference:

Keith Vogt	Roy McGowan
------------	-------------

REPORT NO. 21 - ITINERACY AND ELDER'S ORDERS (Cont.)

3. That the following individuals, having been recommended by their local church, be received to study and travel under the direction of the conference:
 Richard Grizzell (recommended by Sunland Church)
 Richard L. Dulinsky (recommended by El Monte Church)
4. That the following individuals, having been recommended by their local church to be received to study under the direction of the conference:
 Paul Landrey (recommended by Arcade Church)
 LeRoy Brady (recommended by Fallon, Nevada Church)
 Ernest Hooper (recommended by Fallon, Nev. Church)
 Walter Plants (recommended by Fallon, Nev. Church)
 Theodore Marsh (recommended by Whittier Church)
5. That the following individuals, having met the prescribed conditions, are eligible to receive authorization to administer the Sacraments and Solemnize Matrimony:

Fred Van Tatenhove	Richard Grizzell
Eugene Welliver	Lowell Weller
Galen Anderson	Antonio Cortes
Russell Schumacher	Antonio Rios
6. That the following individuals be returned to their quarterly conferences:

Jimmy D. O'Quinn	David Spisak
Roger Graham	John Wright
7. That the following individuals be discontinued:
 Harold Ludwig
8. That the following individuals be received from other denominations to study and travel under the direction of the conference:
 Russell Schumacher Lowell Weller
9. That Ollie J. Philpot, having fulfilled the requirements as outlined in the discipline, be recommended for ordination and that said ordination take place on Tuesday, June 27, evening service.
10. We recommend that conference preachers and supplies who have not been examined in the Wesleyan Methodist Discipline pass this course early in the first year of conference appointment. Failure to comply with

REPORT NO. 21 - ITINERACY AND ELDER'S ORDERS (Cont.)

this directive will be considered grounds for discon-
tinuing said conference appointment. We request
that this matter be referred to the Committee on
Standing Rules for prior consideration before its
final report.

Respectfully submitted,

Clinton W. Jones

James H. Judy

John Henley

Malcolm Robertson

Hugh Otto

Lucille Ranta

Sylvia Pranter

REPORT NO. 22

SPECIAL COMMITTEE ON FULL TIME CONFERENCE PRESIDENT

See pages 55 and 56, Minutes of Board of Church Ex-
tension and Evangelism.

REPORT NO. 23

FINANCE COMMITTEE

We recommend:

1. That our General Budget be in harmony with the
denominational requirements per member as follows:

World Missions - - - - -	\$ 2.00
Church Extension - - - - -	1.50
Education - - - - -	4.00
Superannuate Pension Plan - - - - -	2.00
Hephzibah Orphanage - - - - -	.35
Administrative Budget - - - - -	1.00
Board of Administration - - - - -	.25
General Conference Expense - - - - -	.50
Australia - - - - -	.25
Brainerd Indian School - - - - -	.25
General Sunday School (no. in main school)	.20

2. That our Conference Budget be as follows:

REPORT NO. 23 - FINANCE COMMITTEE (Cont.)

Conference Extension - - - - -	\$ 1.00
Conference Work - - - - -	2.00
Annual Conference Expense - - - - -	1.00
Conference Sunday School (NO. in main sch.)	.10
Conference President's Expense - - - - -	5.00
Conference President's Salary - - - - -	6.00
Conference President's Parsonage - - - - -	1.00
Azusa College - - - - -	.25

3. That the deficit of \$371.59 in the Conference President's salary account and \$796.31 in the Conference President's Expense Account be cleared from funds available from the proceeds of the sale of the property located at Nelson Street in La Puente.
4. That the Conference President's Salary, Support Grant of \$1200.00 from Wesleyan World Headquarters be credited to our Conference President's Salary Account, and that the Grant for our full-time Conference President Program of \$1000.00 be credited to the Conference President's Expense Account.
5. That the Conference President's support be as follows:
 - a. Salary be \$100.00 per week.
 - b. House rent be \$100.00 per month.
 - c. All utilities be paid.
 - d. \$25.00 per week for office expense.
 - e. \$25.00 per week be allowed for secretarial help, with the subject to be early reviewed by the Conference Board.
 - f. 8¢ per mile be allowed for travel and other expenses concurrent with travel.
6. That the Conference President be advanced Two Hundred dollars (\$200.00) from the travel expense fund.
7. That the Conference Treasurer's books be revised according to the recommendation of the Conference Auditor.
8. That the Conference President and his Advisory Board be assigned responsibility of Conference Minutes printing and copies of the same to be released to the churches in receipt of fifty cents (50¢) donation per copy.

REPORT NO. 23 - FINANCE COMMITTEE (Cont.)

9. That the "500" Plan should be continued under the direction of the Conference Board of Church Extension and Evangelism.
10. That the following churches bring in the amounts due on the Superannuate Pension Plan deficit item of the budget according to the Conference Treasurer's records within thirty (30) days. Said churches and amounts due are as follows:
- | | |
|------------------|-----------|
| Bostonia - - - - | \$ 126.00 |
| Carlsbad - - - - | 4.00 |
| Pasadena - - - - | 38.00 |
| Winslow - - - - | 18.00 |

Sherwood Eddy
 Max Trayer
 Eulalia Jillson
 Ted Stewart
 Claton Butcher
 Richard Rossow

REPORT NO.24

UNION WITH OTHER GROUPS

To the California Wesleyan Methodist Conference 1961:

In view of the many involvements in considering union with sister denominations; we recommend that consideration of union be delayed until next conference and this committee study the subject further and present a report at that time.

Committee to study union,
 Clinton W. Jones
 Archy L. Mudgett
 Orval C. Butcher

REPORT NO.25

PASTORAL RELATIONS

We, the Committee on Pastoral Relations, submit the following report:

REPORT NO. 25 - PASTORAL RELATIONS (Cont.)

BOSTONIA - Edward L. Eddy

CANANEA, BACOACHI, Sonora, Mexico (Circuit) -

Antonio Rios S

CARLSBAD - In the hands of the Conference President
L. C. Padilla (Supply Pastor)

CHESTER - Fred Van Tatenhove

COVINA (Arrow Highway) - Martin W. Cox (Supply Pastor)

EL MONTE - George Stoddard

FAIR OAKS (Lincoln Oaks) (Pioneer Project) -

Claton Butcher

Chas. H. & Coral W. Butcher, Associates

FALLON, Nevada - William E. Plants (Supply Pastor)

GRASS VALLEY - Charles Denison

HUNTINGTON BEACH (Pioneer Project) - Galen Anderson

LAKESIDE - Eugene Welliver

LA PUENTE - Russell Schumacher (Supply Pastor)

LAWDALE - Lee Hoge

LEMON GROVE (Skyline) - Orval Butcher

Derric Johnson, Associate

LOS ANGELES (El Sereno) - Discontinued

NORWALK - Paul McCoy (Supply Pastor)

PASADENA - Lowell Weller

PHOENIX, Arizona - Emerson Smith

SACRAMENTO (Arcade) - Richard Rossow

SAN GABRIEL - Discontinued

SAN PEDRO, Sonora, Mexico - Antonio Cortes R

SUNLAND - James Judy

SUNNYMEAD (Pioneer Project) - Ollie Philpot

VISTA MEXICAN CHAPEL - John Henley

WHITTIER - Sherwood Eddy

WINSLOW, Arizona - Gaylord Jordan (Supply Pastor)

OTHER APPOINTMENTS:

D. H. Scott - Conference President Emeritus

Archy L. Mudgett - Conference President

Clinton Jones - General Evangelist and Instructor at
Azusa College

Charles Butcher - Conference Evangelist

Eldred V. Perkins - Minister of Church Development

Paul J. Batman - Evangelistic Singer

Wendell Campbell - Social Worker for Baptist Children's
Home, Inglewood

Arthur Depew - City Rescue Mission Work

Esther Depew - W.C.T.U. Lecturer and Children's Work

W. R. Grizzell - Cogswell Rd. Community Church,
El Monte

REPORT NO. 25 - PASTORAL RELATIONS (Cont.)

Ronald A. and Alice Mae Heavilin - Missionaries to
Puerto Rico
 Bud B. Jillson - Missionary to the Philippines under
Far East Broadcasting Company
 L. J. Reckard - Field Director for Evangelical World
Relief, N.A.E., Southwest Region
 Malcolm Robertson - Vice-President of Azusa College
and Dean of Education
 Charles B. Spisak - Executive Director of San Diego
County Goodwill Industries
 Harold Taylor & Pearl Taylor - Pine Grove Church
 George A. Thomas - Chaplain of Goodwill Industries

Superannuate: D. O. Beach, F. L. Berkebile, D. H. Scott

Unstationed: Paul H. Hodge, Olive L. Hodge

Withdrawn: Keith McRoberts, Pauline Ludwig

Reserve Elders List:

Roma L. Acuna	Edward N. LeJuene
William G. Butcher	Laurence W. Malton
William A. Carnett	Ruth M. Sanchez
George E. Hawley	H. Arthur Taylor
Donald F. Jones	C. DeVere Wilson
Marjory E. Jones	

The above are placed on the Reserve List, ready to take work at the hands of the Annual Conference.

It is planned that the Conference President and his Advisory Board will review their labors and recommend to the Pastoral Relations Committee, 1962, plans for their future status.

Archy Mudgett
 Kenneth Wilch
 Orval Butcher
 William Dawsey
 Emerson Smith
 Jack Martin

REPORT NO.26 STATISTICAL REPORT

NAME OF CHARGE	ITEM I - PASTOR'S LABORS							ITEM II - PERIODICALS						
	Local Preachers	Appointments	Organized Church Societies	Time Employed	Stationed Elders	Unstationed Elders	Superannuate Elders	Conference Preachers	Wesleyan Methodists	Wesleyan Missionary	Wesleyan Youth	Sunday School Banner	Junior Journeys	Children's Friend
El Cajon (Bostonia)	-	1	1	11	-	-	1	-	10	15	-	24	-	-
Carlsbad	-	1	1	12	3	-	-	2	-	-	-	-	-	-
Chester	-	1	1	12	-	-	1	1	2	6	5	20	-	-
Covina (Arrow Highway)	-	1	1	12	3	-	-	-	2	26	-	-	-	-
El Monte	1	1	1	12	5	-	-	-	11	34	-	30	-	-
Fallon, Nevada	4	1	1	-	-	-	-	-	-	-	-	28	9	-
Grass Valley	-	1	1	12	1	-	-	-	10	-	10	12	10	8
Lakeside	1	1	1	12	1	-	-	1	14	10	1	15	40	30
La Puente	-	1	1	10	1	-	-	1	2	2	-	-	-	-
Lawndale	-	1	1	9	3	-	-	1	10	9	1	-	-	-
Lemon Grove (Skyline)	1	1	1	12	5	-	-	1	6	60	-	-	-	-
Fair Oaks (Lincoln Oaks)	-	1	-	12	1	-	-	-	2	16	1	45	55	60
Norwalk	-	1	1	12	2	-	-	-	18	7	-	30	-	25
Pasadena	1	1	1	12	1	-	1	-	20	10	-	25	16	12
Phoenix, Arizona	-	1	1	12	1	-	-	-	-	-	-	70	50	20
Sacramento (Arcade)	1	1	1	12	2	-	-	-	5	15	3	-	-	-
San Gabriel	-	1	1	12	6	-	-	-	12	9	5	22	15	5
Sunland	2	1	1	12	2	2	-	-	26	11	5	-	-	-
Sunnymead	-	1	-	12	-	-	-	-	2	12	-	-	-	-
Vista	-	1	-	12	-	-	-	-	1	1	1	8	6	-
Whittier	1	1	1	12	-	1	-	-	4	8	2	50	-	-
Winslow, Arizona	-	1	1	6	-	-	-	-	1	-	-	10	6	5
Huntington Beach	-	1	-	12	-	-	-	-	4	1	-	8	12	12
T O T A L S	12	23	19	252	37	3	3	7	162	252	34	397	219	177

ITEM II (Continued) - PERIODICALS

NAME OF CHARGE	Teacher's Quarterly Adult	Teacher's Quarterly Junior Youth	Teacher's Quarterly Junior Primary	Adult Quarterly	Junior Youth Quarterly	Junior Quarterly	Primary Quarterly	Devotional Quarterly	Lesson Leaflets	Aldersgate Nursery Teacher	Aldersgate Class Activity	Aldersgate Kindergarten Teacher	Aldersgate Kindergarten Leaflets	Aldersgate Kindergarten Handbook
El Cajon (Bostonia)	36								13					
Carlsbad	2	2		5		10	5							
Chester														
Covina (Arrow Highway)														
El Monte	3			36										
Fallon, Nevada			2											
Grass Valley	2	2	2	15	15	8	10		12					
Lakeside	6			50				2	10			2	25	25
La Puente														
Lawndale	6			60					20	1	20	2	40	40
Lemon Grove (Skyline)	1													
Fair Oaks (Lincoln Oaks)	5	1	15	30	30	36			10	2	30	3		22
Norwalk	4	1	10	25	25	20	15	10	35					
Pasadena	1	1	1	20	8		8		8					
Phoenix, Arizona	10	1	3	50	15				15	1	6	1		5
Sacramento (Arcade)	2			35					12					
San Gabriel	3	2	2	20	10	8	5			1	8	8		
Sunland	2			40										
Sunnymead	3			40										
Vista			2											
Whittier	4	2		50	25				40					
Winslow, Arizona	2		1	5	5	9	5	4	5					
Huntington Beach	2	1	1	10	14	18				1	12			
T O T A L S	95	14	39	501	147	109	48	17	179	6	76	16	65	92

REPORT NO. 26 - STATISTICS (Cont.)

ITEM III - MEMBERSHIP

NAME OF CHARGE	Full Members Last Year	Full Members Received	Total	Expelled	Discontinued	Died	Granted Letters	Members Lost	Present Full Membership	Associate Last Year	Associate This Year	Jr. Members Last Year	Jr. Members This Year	Total Present Membership	Total Membership Last Year	Gain in Members	Loss in Members	Baptised	Infants Dedicated	Family Altars	Members Tithing	Card Call Subscribers
El Cajon	63	8	71	-	2	-	5	7	64	-	-	15	16	80	78	2	-	5	2	-	-	-
Carlsbad	10	3	13	-	-	1	-	1	12	5	14	11	6	32	26	6	-	-	1	4	4	-
Chester	14	6	20	-	3	-	-	3	17	1	1	3	3	21	18	3	-	1	2	4	10	-
Covina	100	10	110	-	9	-	5	14	96	-	-	10	10	106	110	-	4	12	4	5	40	1
El Monte	53	18	71	-	2	-	3	5	66	-	-	7	14	80	60	20	-	-	4	22	34	-
Fallon	-	27	27	-	-	-	-	-	27	-	-	-	-	27	-	27	-	-	-	-	-	-
Grass Valley	9	2	11	-	-	-	2	2	9	-	-	-	11	20	9	11	-	9	-	3	4	1
Lakeside	20	2	22	-	-	-	-	-	22	-	-	-	-	22	20	2	-	-	4	10	16	-
La Puente	25	-	25	-	-	-	-	-	25	-	-	-	-	25	25	-	-	-	-	-	-	-
Lawndale	91	12	103	-	26	8	34	69	-	-	-	20	20	89	111	-	22	2	11	20	25	2
Lemon Grove	205	63	268	-	6	9	15	253	-	-	-	69	72	325	274	51	-	-	-	60	90	2
Fair Oaks	-	-	-	-	-	-	-	-	-	-	-	-	-	-	-	-	-	20	19	60	90	2
Los Angeles	5	-	5	-	5	-	-	5	-	-	-	-	-	-	5	-	5	-	2	6	12	-
Norwalk	27	2	29	-	3	-	3	26	11	11	-	15	52	38	38	14	-	5	3	10	10	4
Pasadena	19	-	19	-	-	2	2	17	-	-	-	-	-	17	19	-	2	-	-	-	14	-
Phoenix	22	5	27	-	1	-	1	26	2	2	5	11	39	29	10	-	-	-	-	-	-	-
Sacramento	92	31	123	-	5	2	7	116	-	-	-	45	53	169	137	32	-	17	5	25	20	3
San Gabriel	22	-	22	-	1	-	1	21	-	-	-	6	4	25	28	-	3	-	-	11	10	4
Sunland	61	7	68	-	-	2	2	66	6	8	27	28	102	94	8	-	6	1	34	36	4	
Sunnymead	-	-	-	-	-	-	-	-	-	-	-	-	-	-	-	-	-	-	-	-	-	-
Vista	-	-	-	-	-	-	-	-	-	-	-	-	-	-	-	-	-	-	-	-	-	-
Whittier	130	41	171	-	1	3	4	167	-	-	-	35	50	217	165	52	-	19	1	30	75	4
Winslow	9	-	9	-	8	1	9	-	-	-	-	2	2	2	11	-	9	-	-	-	-	-
Huntington Beach	-	-	-	-	-	-	-	-	-	-	-	-	-	-	-	-	-	-	-	2	3	1
TOTALS	977	237	1214	-	72	1	42	115	1089	25	36	255	315	1480	1257	238	45	98	77	246	403	26

ITEM IV - SUNDAY SCHOOLS

ITEM V
WESLEYAN YOUTH

NAME OF CHARGE	No. of Sunday Schools	No. of Officers and Teachers	No. of Scholars in Main School	Total Number in Main School	No. in Home Department	No. on Cradle Roll	Total Number in Sunday School	Average Attendance	Number Scholars Converted	Number Scholars Joining Church	No. Dept. Supt.	No. in Teacher Training Course	No. Organized Classes	No. Books in Library	Enrollment - V.B.S.	Average Attendance - V.B.S.	Youth Societies	Total Membership
El Cajon	1	20	175	195	-	2	197	125	12	3	2	10	14	25	-	-	1	8
Carlsbad	1	6	35	41	-	-	41	28	-	-	-	-	4	-	-	-	1	8
Chester	1	9	120	129	-	10	139	70	3	4	1	-	7	-	-	-	1	10
Covina	1	35	525	560	-	22	582	367	28	8	3	-	1	85	62	62	1	6
El Monte	1	22	131	153	1	9	163	100	12	11	7	-	13	50	91	78	1	-
Fallon	1	9	51	60	-	3	63	60	-	-	-	-	-	-	-	-	-	-
Grass Valley	1	5	43	48	-	-	48	31	10	11	-	-	-	5	-	-	1	9
Lakeside	1	16	144	160	4	9	173	117	14	-	2	-	13	-	151	104	1	-
La Puente	1	10	73	83	-	-	83	73	-	-	-	-	-	-	-	-	1	8
Lawndale	1	28	364	392	-	-	392	211	1	9	3	5	22	1000	-	-	1	-
Lemon Grove	1	100	1010	1110	-	-	1110	670	150	50	14	128	6	140	-	-	1	50
Fair Oaks	2	26	200	226	-	-	226	152	15	-	3	12	13	-	200	165	1	-
Norwalk	1	14	130	144	2	2	148	109	20	17	2	-	-	-	110	82	2	22
Pasadena	1	7	45	52	-	2	54	43	6	-	-	1	7	40	-	-	-	-
Phoenix	1	10	112	122	-	13	135	114	-	5	2	-	-	-	-	-	1	20
Sacramento	1	18	350	368	-	-	368	168	35	30	1	14	-	-	-	-	1	20
San Gabriel	1	8	30	38	-	4	42	32	-	-	-	-	-	14	-	-	-	-
Sunland	1	28	185	213	2	9	224	119	14	1	2	20	14	328	-	-	1	14
Sunnymead	1	15	237	252	-	-	252	152	42	-	-	-	14	6	177	106	-	-
Vista	1	4	32	36	-	-	36	19	-	-	-	-	-	-	-	-	-	-
Whittier	1	50	560	610	-	8	618	374	25	36	2	-	2	-	240	209	2	30
Winslow	1	6	24	30	2	-	32	25	-	-	-	-	-	-	-	-	-	-
Huntington Beach	1	4	38	42	-	-	42	28	6	-	-	-	4	-	53	40	-	-
T O T A L S	24	450	4614	5064	11	93	5168	3187	393	185	44	190	139	1688	1024	846	17	197

ITEM VI - CHURCH PROPERTY

NAME OF CHARGE	Church Buildings	Value of Church Buildings	Amount of Indebtedness	Amount of Insurance	Cash or Other Values on Hand	No. of Parsonages	Value of Parsonages	Amount of Indebtedness	Amount of Insurance	Cash or Other Values on Hand - Conference
El Cajon	3	\$ 40,000.00	\$ 6,042.00	\$ 39,000.00	\$ ---	1	\$ 20,000.00	\$12,327.00	\$ 10,000.00	\$ ---
Carlsbad	1	9,000.00	600.00	41.31	146.42	1	3,000.00	---	---	---
Chester	1	18,625.59	---	15,000.00	350.00	1	6,918.27	---	4,500.00	---
Covina	1	79,985.00	20,759.32	79,985.00	1,307.57	-	---	---	---	---
El Monte	1	65,000.00	3,378.81	61,500.00	---	1	15,000.00	5,536.64	10,000.00	---
Fallon	-	---	---	---	---	-	---	---	---	---
Grass Valley	2	5,000.00	2,460.43	7,000.00	53.43	1	2,500.00	---	3,000.00	---
Lakeside	3	39,500.00	5,005.76	41,000.00	339.17	-	---	---	---	---
La Puente	2	35,000.00	---	20,000.00	121.50	1	---	---	---	---
Lawndale	4	83,000.00	---	70,000.00	237.85	1	16,000.00	7,353.06	15,000.00	---
Lemon Grove	2	143,796.00	44,573.42	40,116.08	154.58	1	25,280.00	---	22,752.00	---
Fair Oaks	1	35,000.00	---	25,000.00	1,200.00	1	16,000.00	7,000.00	10,000.00	---
Norwalk	1	50,000.00	10,540.79	40,000.00	32.84	1	10,000.00	---	7,500.00	---
Pasadena	1	27,200.00	193.41	27,200.00	---	1	1,000.00	4,103.28	1,000.00	---
Phoenix	2	30,000.00	10,000.00	30,000.00	---	1	10,000.00	---	10,000.00	---
Sacramento	3	112,000.00	39,400.00	80,000.00	1,229.00	1	17,500.00	10,800.00	12,000.00	---
San Gabriel	1	20,000.00	287.17	18,000.00	---	-	---	---	---	---
Sunland	1	45,000.00	2,600.00	20,000.00	---	1	22,000.00	9,400.00	11,500.00	---
Sunnymead	1	30,000.00	2,378.81	20,000.00	---	1	14,500.00	---	14,500.00	---
Vista	1	3,500.00	---	3,500.00	---	-	---	---	---	---
Whittier	1	90,000.00	33,000.00	80,000.00	18,000.00	1	15,000.00	---	14,000.00	---
Winslow	1	15,000.00	---	12,000.00	1,517.68	-	6,000.00	---	5,000.00	---
Huntington Beach	-	---	---	---	---	-	---	---	---	---
T O T A L S	34	\$976,606.59	\$181,219.92	\$729,342.39	\$24,690.04	16	\$200,698.27	\$56,519.98	\$150,752.00	\$7,876.76

ITEM VII - DISBURSED FOR PASTOR

ITEM VIII - DISBURSED FOR CHURCH

NAME OF CHARGE	Salary	Parsonage Rent and Utilities	Marriage and Funeral Fees	Gifts	Travel and/or Car Expense	Total Pastor's Receipts	Other Evangelistic Help	Sunday School Expense	Buildings	Repairs
El Cajon	\$ 4,292.50	\$ 1,375.00	\$ 100.00	\$ 266.50	\$ ---	\$ 6,034.00	\$ 113.00	\$ 448.60	\$ ---	\$ ---
Carlsbad	720.00	520.00	---	---	---	1,240.00	19.75	50.09	---	19.50
Chester	1,760.00	660.00	10.00	100.00	50.00	2,580.00	55.00	475.56	---	24.60
Covina	3,380.00	1,716.00	115.00	35.00	1,144.00	6,390.00	124.15	6,007.03	632.43	183.39
El Monte	5,200.00	1,185.00	141.00	---	---	6,526.00	1,089.48	585.51	---	598.09
Fallon	170.00	80.00	---	25.00	---	275.00	---	34.37	---	---
Grass Valley	412.81	420.00	---	49.96	---	882.77	75.00	142.90	---	---
Lakeside	2,650.00	1,266.25	40.00	205.00	840.00	5,001.25	40.00	876.77	---	100.63
La Puente	2,815.00	244.88	15.00	---	---	3,074.88	43.15	90.40	154.20	24.14
Lawndale	4,599.00	889.05	90.00	112.00	---	5,690.05	---	1,159.37	---	185.18
Lemon Grove	5,325.00	1,020.00	150.00	100.00	420.00	7,015.00	700.00	2,299.81	446.01	---
Fair Oaks	1,150.00	1,200.00	30.00	120.00	---	2,500.00	125.00	747.44	---	---
Norwalk	2,700.00	390.00	55.00	145.00	---	3,290.00	96.47	466.80	---	---
Pasadena	2,285.00	840.00	---	110.00	---	3,235.00	116.00	230.00	---	---
Phoenix	3,380.00	840.00	20.00	100.00	780.00	5,120.00	41.40	872.43	1,241.63	361.02
Sacramento	3,695.00	1,850.00	210.00	300.00	850.00	6,905.00	195.00	1,052.00	2,000.00	---
San Gabriel	2,600.00	---	---	220.00	---	2,820.00	---	204.40	---	---
Sunland	3,940.00	1,424.22	120.00	---	---	5,484.22	267.00	829.88	1,200.00	260.00
Sunnymead	3,635.00	985.52	33.00	---	60.00	4,713.52	101.86	596.27	933.16	13.85
Vista	---	---	---	---	---	---	32.10	65.59	---	26.39
Whittier	5,200.00	1,740.00	150.00	1,000.00	---	8,090.00	250.00	1,352.17	20,000.00	---
Winslow	765.00	1,470.33	---	---	600.00	2,835.33	---	84.05	---	331.50
Huntington Beach	---	600.00	10.00	100.00	---	710.00	85.00	124.73	---	---
TOTALS	\$50,674.31	\$20,716.25	\$1,289.00	\$2,988.46	\$4,744.00	\$90,412.02	\$3,569.36	\$18,796.17	\$26,607.43	\$2,128.29

ITEM VIII (Cont.) - DISBURSED FOR CHURCH					ITEM IX - DISBURSED FOR BUDGET					
NAME OF CHARGE	Amount Paid on Indebtedness	Amount Paid on Expense of Indebtedness	Church Incidental Expense	Total for Church	World Missions (Assigned)	World Missions (Raised)	Australia (Assigned)	Australia (Raised)	Brainerd Indian School (Assigned)	Brainerd Indian School (Raised)
El Cajon	\$ 2,167.06	\$ 1,186.31	\$ 2,350.87	\$ 6,265.84	\$ 126.00	\$ 206.65	\$ 15.75	\$ ---	\$ 15.75	\$ 5.00
Carlsbad	---	---	---	89.34	12.00	12.00	2.00	2.00	2.00	2.00
Chester	---	---	2,921.88	3,477.04	28.00	28.00	3.50	3.50	3.50	3.50
Covina	2,287.53	1,177.47	5,610.08	16,022.08	200.00	246.16	25.00	13.96	20.00	13.96
El Monte	585.28	782.72	5,921.65	9,562.73	106.00	106.00	13.25	13.25	13.25	13.25
Fallon	---	---	180.09	214.46	---	---	---	---	---	---
Grass Valley	600.00	---	97.40	915.30	18.00	---	2.25	---	2.25	---
Lakeside	267.45	632.55	1,176.65	3,094.05	40.00	229.36	5.00	5.00	5.00	---
La Puente	573.64	226.36	351.46	1,463.35	50.00	---	6.25	---	6.25	---
Lawndale	1,272.00	---	3,149.60	5,766.15	182.00	170.58	27.75	13.25	27.75	27.75
Lemon Grove	5,608.79	2,623.15	23,441.59	35,119.35	410.00	771.01	51.25	51.25	51.25	51.25
Fair Oaks	508.50	720.00	4,380.26	6,481.20	---	---	---	---	---	---
Norwalk	1,419.01	680.99	1,105.66	3,768.93	54.00	67.55	6.75	7.00	6.75	6.75
Pasadena	---	---	---	346.00	38.00	---	4.75	---	4.75	---
Phoenix	2,142.97	---	1,286.80	5,946.25	44.00	44.25	5.50	5.50	5.50	5.50
Sacramento	3,900.00	2,501.00	5,439.00	15,087.00	184.00	236.00	---	---	---	10.00
San Gabriel	552.00	48.00	142.60	947.00	44.00	---	5.50	5.50	5.50	5.50
Sunland	1,680.00	514.00	2,907.44	7,658.32	122.00	122.00	15.25	15.30	15.25	15.30
Sunnymead	---	---	1,897.19	3,542.33	---	---	---	---	---	---
Vista	---	---	354.99	479.07	---	---	---	---	---	---
Whittier	8,460.00	---	3,034.52	33,096.69	260.00	424.11	32.50	32.50	32.50	32.50
Winslow	---	70.00	231.00	716.55	18.00	---	2.25	---	2.25	---
Huntington Beach	---	---	302.72	512.45	---	---	---	---	---	---
T O T A L S	\$32,024.23	\$11,162.55	\$66,283.45	\$160,571.48	\$1,944.00	\$2,719.67	\$243.00	\$168.01	\$243.00	\$192.26

ITEM IX (Continued) - DISBURSED FOR BUDGET (GENERAL)

NAME OF CHARGE	Church Extension and Evangelism (Assigned)	Church Extension and Evangelism (Raised)	Education (Assigned)	Education (Raised)	Pension Plan (Assigned)	Pension Plan (Raised)	Administrative Budget (Assigned)	Administrative Budget (Raised)	Board Meeting Expense (Assigned)	Board Meeting Expense (Raised)
El Cajon	\$ 94.50	\$ 23.15	\$ 252.00	\$ 40.00	\$ 126.00	\$ ---	\$ 63.00	\$ ---	\$ 15.75	\$ ---
Carlsbad	10.00	10.00	16.00	16.00	16.00	16.00	8.00	8.00	2.00	---
Chester	21.00	23.00	56.00	56.00	28.00	28.00	14.00	---	3.50	---
Covina	150.00	90.43	400.00	212.32	200.00	200.00	100.00	55.87	25.00	---
El Monte	79.50	79.50	212.00	212.00	106.00	106.00	53.00	53.00	13.25	13.25
Fallon	---	---	---	---	---	---	---	---	---	---
Grass Valley	13.50	---	36.00	---	18.00	18.00	9.00	9.00	2.25	---
Lakeside	30.00	11.90	80.00	54.64	40.00	40.00	20.00	10.00	---	---
La Puente	37.50	---	100.00	---	50.00	50.00	25.00	---	6.25	---
Lawndale	136.50	---	273.00	216.12	182.00	182.00	91.00	---	27.75	---
Lemon Grove	307.50	141.68	820.00	6.80	410.00	410.00	205.00	---	51.25	---
Fair Oaks	---	---	---	---	---	---	---	---	---	---
Norwalk	40.50	2.00	108.00	---	54.00	56.00	27.00	2.00	6.75	2.00
Pasadena	28.50	---	76.00	---	38.00	---	19.00	---	4.75	---
Phoenix	33.00	33.00	88.00	88.00	44.00	44.00	22.00	22.00	5.50	5.50
Sacramento	142.00	140.00	368.00	75.00	184.00	184.00	92.00	25.00	---	---
San Gabriel	33.00	33.00	88.00	88.00	44.00	44.00	22.00	22.00	5.50	---
Sunland	91.50	91.50	244.00	244.00	122.00	122.00	61.00	61.00	15.25	15.30
Sunnymead	---	---	---	---	---	---	---	---	---	---
Vista	---	---	---	---	---	---	---	---	---	---
Whittier	195.00	195.00	520.00	520.00	260.00	260.00	130.00	130.00	32.50	32.50
Winslow	13.50	---	36.00	---	18.00	---	9.00	---	2.25	---
Huntington Beach	---	---	---	---	---	---	---	---	---	---
T O T A L S	\$1,458.00	\$874.16	\$3,888.00	\$1,828.88	\$1,844.00	\$1,760.00	\$972.00	\$397.87	\$243.00	\$68.55

REPORT NO. 26 - STATISTICS (Cont.)

REPORT NO. 26 - STATISTICS (Cont.)

NAME OF CHARGE	ITEM IX (Continued) - DISBURSED FOR BUDGET (GENERAL)						(CONFERENCE)			
	General Conf. Expense and Entertainment (Assigned)	General Conf. Expense and Entertainment (Raised)	Orphanage (Assigned)	Orphanage (Raised)	General Sunday School Work (Assigned)	General Sunday School Work (Raised)	TOTAL GENERAL BUDGET (Assigned)	TOTAL GENERAL BUDGET (Raised)	President's Salary (Assigned)	President's Salary (Raised)
El Cajon	\$ 15.75	\$ ----	\$ 22.00	\$ 11.00	\$ 40.00	\$ ----	\$ 805.70	\$ 285.80	\$ 157.50	\$ 46.37
Carlsbad	4.00	4.00	3.50	3.50	11.00	----	132.00	73.50	16.00	16.00
Chester	3.50	----	4.90	4.90	13.00	13.00	182.40	159.90	35.00	12.00
Covina	50.00	13.96	35.00	35.00	112.00	11.46	1,344.00	893.12	250.00	139.68
El Monte	26.50	26.50	18.55	18.55	29.80	29.80	671.10	671.10	132.50	132.50
Fallon	----	----	----	----	----	----	----	----	----	----
Grass Valley	2.25	----	3.15	3.15	7.20	7.20	117.10	37.35	22.50	22.50
Lakeside	5.00	5.90	7.00	41.55	27.40	27.40	269.40	425.75	50.00	35.00
La Puente	6.25	----	8.75	----	18.20	----	320.70	50.00	62.50	33.00
Lawndale	45.50	----	31.85	39.57	60.00	25.00	1,173.70	674.27	227.50	227.50
Lemon Grove	102.50	----	63.75	63.75	98.20	----	2,690.50	1,495.74	512.50	400.00
Fair Oaks	----	----	----	----	----	----	----	----	----	----
Norwalk	13.50	----	9.45	9.80	31.00	2.25	357.70	155.35	67.50	26.00
Pasadena	9.50	----	6.65	71.87	11.80	----	241.70	71.87	47.50	----
Phoenix	11.00	11.00	7.70	7.70	25.00	25.00	291.20	291.45	55.00	55.00
Sacramento	23.00	23.00	32.00	11.00	20.00	5.00	1,153.40	709.00	230.00	68.00
San Gabriel	11.00	11.00	7.70	7.70	11.20	11.20	277.40	283.90	55.00	55.00
Sunland	30.50	30.50	21.35	21.40	42.00	42.20	780.10	780.50	152.50	152.50
Sunnymead	----	----	----	----	----	----	----	----	----	----
Vista	----	----	----	----	----	----	----	----	----	----
Whittier	65.00	65.00	45.50	45.50	122.00	122.00	1,695.00	1,859.11	325.00	325.00
Winslow	4.50	----	3.15	----	7.80	----	116.70	----	22.50	----
Huntington Beach	----	----	----	----	----	----	----	----	----	----
TOTALS	\$486.00	\$190.86	\$340.20	\$395.94	\$852.60	\$321.51	\$12,619.80	\$8,917.71	\$2,430.00	\$1,746.05

ITEM IX (Continued) - DISBURSED FOR BUDGET (CONFERENCE)

NAME OF CHARGE	President's Expense (Assigned)	President's Expense (Raised)	Conference Work Fund (Assigned)	Conference Work Fund (Raised)	Conf. Church Extension and Evangelism (Assigned)	Conf. Church Extension and Evangelism (Raised)	Conf. Sunday School Work (Assigned)	Conf. Sunday School Work (Raised)	Camp Meeting (Assigned)	Camp Meeting (Raised)
El Cajon	\$ 157.50	\$ 25.00	\$ 126.00	\$ ---	\$ 189.00	\$ ---	\$ 10.00	\$ ---	\$ 63.00	\$ ---
Carlsbad	25.00	---	16.00	16.00	24.00	24.00	2.75	---	10.00	---
Chester	15.00	12.00	28.00	10.00	42.00	14.00	3.25	3.25	14.00	5.00
Covina	250.00	139.68	200.00	111.73	300.00	167.60	28.00	2.89	100.00	55.87
El Monte	132.50	132.50	106.00	106.00	159.00	159.00	7.45	7.45	53.00	53.00
Fallon	---	---	---	---	---	---	---	---	---	---
Grass Valley	22.50	22.50	18.00	18.00	27.00	27.00	1.80	1.80	9.00	9.00
Lakeside	50.00	30.00	40.00	9.00	60.00	20.00	6.85	6.85	20.00	5.00
La Puente	62.50	34.00	50.00	---	75.00	33.00	4.55	2.00	25.00	---
Lawndale	227.50	---	182.00	22.50	273.00	21.25	15.00	---	91.00	---
Lemon Grove	512.50	50.00	410.00	---	615.00	200.00	24.55	---	205.00	---
Fair Oaks	---	---	---	---	---	---	---	---	---	---
Korwalk	67.50	---	54.00	---	81.00	20.05	7.75	7.75	27.00	---
Pasadena	47.50	---	38.00	---	57.00	---	2.95	---	19.00	---
Phoenix	55.00	55.00	44.00	65.00	66.00	66.00	6.25	6.25	22.00	22.00
Sacramento	---	---	184.00	25.00	276.00	25.00	---	5.00	92.00	---
San Gabriel	55.00	55.00	44.00	44.00	66.00	66.00	2.80	2.80	22.00	22.00
Sunland	152.50	152.50	122.00	122.00	183.00	183.00	10.55	10.60	61.00	61.00
Sunnymead	---	---	---	---	---	---	---	---	---	---
Vista	---	---	---	---	---	---	---	---	---	---
Whittier	325.00	325.00	260.00	260.00	390.00	390.00	30.50	30.50	130.00	130.00
Winslow	22.50	---	18.00	---	27.00	---	1.95	---	9.00	---
Huntington Beach	---	---	---	---	---	---	---	---	---	---
T O T A L S	\$2,430.00	\$1,033.18	\$1,944.00	\$809.23	\$2,916.00	\$1,415.90	\$214.65	\$87.14	\$972.00	\$362.87

REPORT NO. 26 - STATISTICS (Cont.)

ITEM IX (Continued) - DISBURSED FOR BUDGET (CONFERENCE)

NAME OF CHARGE	Azusa College (Assigned)	Azusa College (Raised)	Conference Parsonage (Assigned)	Conference Parsonage (Raised)	TOTAL CONFERENCE BUDGET (Assigned)	TOTAL CONFERENCE BUDGET (Raised)	GRAND TOTAL BUDGET (Assigned)	GRAND TOTAL BUDGET (Raised)
El Cajon	\$ 15.75	\$ ---	\$ 63.00	\$ ---	\$ 782.60	\$ 71.37	\$ 1,588.30	\$ 357.17
Carlsbad	2.50	---	10.00	---	125.25	56.00	257.25	129.50
Chester	3.50	3.50	14.00	5.00	174.75	64.75	357.15	224.65
Covina	25.00	13.26	100.00	55.88	1,258.50	686.59	2,602.50	1,579.71
El Monte	13.25	13.25	53.00	53.00	656.70	656.70	1,327.80	1,327.80
Fallon	---	---	---	---	---	---	---	---
Grass Valley	2.25	2.25	9.00	9.00	112.30	112.05	229.40	149.40
Lakeside	5.00	2.50	20.00	10.00	251.85	118.35	521.25	544.10
La Puente	6.25	---	25.00	---	310.80	102.00	631.50	152.00
Lawndale	27.75	---	91.00	---	1,132.90	271.25	2,306.60	945.52
Lemon Grove	51.25	---	205.00	---	2,563.75	650.00	5,254.25	2,145.74
Fair Oaks	---	---	---	---	---	---	---	---
Norwalk	6.75	---	27.00	---	338.50	53.80	696.20	209.15
Pasadena	4.75	---	19.00	---	235.70	---	477.40	71.87
Phoenix	5.50	5.50	22.00	22.00	275.75	296.75	566.95	588.20
Sacramento	23.00	---	92.00	15.00	1,137.05	138.00	2,290.45	847.00
San Gabriel	5.50	5.50	22.00	22.00	272.30	272.30	549.70	556.20
Sunland	15.25	15.30	61.00	61.00	757.75	757.90	1,537.85	1,538.40
Sunnymead	---	---	---	---	---	---	---	---
Vista	---	---	---	---	---	---	---	---
Whittier	32.50	32.50	130.00	130.00	1,623.00	1,623.00	3,318.00	3,482.11
Winslow	2.25	---	9.00	---	112.20	---	228.90	---
Huntington Beach	---	---	---	---	---	---	---	---
T O T A L S	\$243.00	\$93.56	\$972.00	\$382.88	\$12,121.65	\$5,930.81	\$24,741.45	\$14,848.52

ITEM I - DISBURSED FOR BENEVOLENCES

NAME OF CHARGE	World Missions	Australia	Brainerd Indian School	Conf. Church Extension and Evangelism	Education	Orphanage	Conference Work	Wesleyan Youth	Other Objects	TOTAL BENEVOLENCES
El Cajon	\$ 100.61	\$ ---	\$ ---	\$ ---	\$ ---	\$ 34.06	\$ ---	\$ 128.77	\$ 44.66	\$ 307.99
Carlsbad	10.00	---	---	---	---	---	---	---	15.10	25.10
Chester	---	---	---	---	---	---	---	---	---	---
Covina	1,473.31	---	---	---	2,073.07	---	---	30.99	457.56	4,034.93
El Monte	1,175.22	---	---	---	10.00	24.25	---	18.00	1,389.82	2,617.29
Fallon	8.50	---	---	---	---	---	---	---	47.24	55.74
Grass Valley	---	---	---	---	---	---	---	---	---	---
Lakeside	---	---	---	---	---	---	---	64.59	257.08	321.67
La Puente	35.69	---	---	17.32	15.13	10.00	---	---	30.00	108.14
Lawndale	138.93	---	---	---	11.00	---	---	---	180.30	328.23
Lemon Grove	17.47	---	---	---	10.00	---	---	2,569.91	3,574.73	6,172.11
Fair Oaks	---	---	---	---	---	---	---	---	26.63	26.63
Norwalk	---	---	---	---	---	56.00	---	90.86	49.82	196.78
Pasadena	---	---	---	---	---	---	---	---	---	---
Phoenix	103.28	---	---	---	---	---	---	331.29	59.00	493.57
Sacramento	---	---	---	---	24.00	50.00	---	---	264.00	338.00
San Gabriel	19.00	---	6.00	---	---	---	17.00	---	26.75	68.75
Sunland	123.30	---	---	5.00	20.00	50.00	137.52	163.44	763.51	1,262.77
Sunnymead	---	---	---	---	---	---	---	6.60	78.09	84.69
Vista	46.25	---	---	---	---	---	---	---	16.69	62.94
Whittier	2,204.68	---	50.00	48.00	130.00	100.00	---	545.00	870.00	3,947.68
Winslow	---	---	---	---	44.00	---	---	---	---	44.00
Huntington Beach	115.65	---	---	---	---	25.00	---	---	13.60	154.25
TOTALS	\$5,569.89	\$-----	\$56.00	\$70.32	\$2,337.20	\$349.31	\$154.52	\$3,949.55	\$8,164.47	\$20,651.26

ITEM XI - DISBURSED TOTALS

NAME OF CHARGE	Total for Pastor	Total for Church	Total for Budget	Total for Benevolences	TOTAL FOR ALL PURPOSES
El Cajon (Bostonia)	\$ 6,034.00	\$ 6,265.84	\$ 357.17	\$ 307.99	\$ 12,965.00
Carlsbad	1,240.00	89.34	129.50	25.10	1,483.94
Chester	2,580.00	3,477.04	224.65	---	6,281.69
Covina (Arrow Highway)	6,390.00	16,022.08	1,579.71	4,034.93	28,026.72
El Monte	6,526.00	9,562.73	1,327.80	2,617.29	20,033.82
Fallon, Nevada	275.00	214.46	---	55.74	545.20
Grass Valley	882.77	915.30	149.40	---	1,947.47
Lakeside	5,001.25	3,094.05	544.10	321.67	8,961.07
La Puente	3,074.88	1,463.35	152.00	108.14	4,798.37
Lawndale	5,690.05	5,766.15	945.52	328.23	12,729.95
Lemon Grove (Skyline)	7,015.00	35,119.35	2,145.74	6,172.11	50,452.20
Fair Oaks (Lincoln Oaks)	2,500.00	6,481.20	---	26.63	9,007.83
Norwalk	3,290.00	3,768.93	209.15	196.78	7,464.86
Pasadena	3,235.00	346.00	71.87	---	3,652.87
Phoenix, Arizona	5,120.00	5,946.25	588.20	493.57	12,148.02
Sacramento (Arcade)	6,905.00	15,087.00	847.00	338.00	23,177.00
San Gabriel	2,820.00	947.00	556.20	68.75	4,391.95
Sunland	5,484.22	7,658.32	1,538.40	1,262.77	15,943.71
Sunnymead	4,713.52	3,542.33	---	84.69	8,340.54
Vista	---	479.07	---	62.94	542.01
Whittier	8,090.00	33,096.69	3,482.11	3,947.68	48,616.48
Winslow, Arizona	2,835.33	716.55	---	44.00	3,595.88
Huntington Beach	710.00	512.45	---	154.25	1,376.70
T O T A L S	\$90,412.02	\$160,571.48	\$14,848.52	\$20,651.26	\$286,483.28

Eugene Welliver, Dorothy Berk

STANDING RULES

SECTION I - ANNUAL CONFERENCE

A. The quorum of this Conference shall be thirty-five percent (35%) of its possible enrollment. Ministerial or lay members of the Conference must not leave the bar of Conference without consent of the chair, nor withdraw from the Conference Session permanently without consent of the Conference.

B. The Nominating Committee shall consist of three elders and three laymen. The elders shall be elected at the time of the election of officers. At the same time the Conference shall name three churches whose delegates, elected to the next session of Conference, shall serve on this committee. Delegates shall send their credentials to this committee not later than five days before Conference. The committee shall then make nominations for Secretaries, Sessions and Standing committees to be presented to the Conference at the proper time.

The Nominating Committee shall also act as Credentials and Ministerial Character Committee. This committee shall compile the roll of delegates for Conference. Ministers shall send their Character Report to this committee at least five days before Conference.

C. All officers, boards and standing committees shall take office as soon as elected except the Statistical Committee, whose term of office shall be from the rise of the Conference in which it is elected until the rise of the following Conference.

D. The Conference shall elect annually two members to serve on the Board of Trustees of Azusa College.

E. A copy of the Statistical blank of each church shall be posted by the Statistical Committee at the opening of the Conference Session.

F. All chairmen of conference boards or committees shall have submitted, and all secretaries of the Conference shall submit their reports to the Conference in writing, and a copy of the same given to the Secretary immediately after the report is adopted.

STANDING RULES (Cont.)

G. Reports of the Board of Trustees and Conference Board of Church Extension and Evangelism submitted to the Conference shall contain only a summary of actions taken during the year for ratification, provided that a full copy of the minutes of all meetings held during the year appear in the Conference Annual Journal.

H. The Agenda Committee for the Conference shall be composed of the President, the Vice-President, the Secretary, the President of the Women's Missionary Society, the President of Wesleyan Youth and the Conference Sunday School Secretary, and shall assume the duties of the Camp Meeting Committee.

1. This committee is empowered to employ evangelistic help up to and including three years in advance.

2. This committee shall arrange for the place of meeting and entertainment of the Annual Conference Session, and shall be responsible for the arrangements in connection with such religious services as well as the program of the Conference Sessions.

I. The Conference Paper, "The Launch," shall be published in ten issues per year. The Conference President is to be designated Editor, and the heads of the Conference auxiliary organizations be responsible as contributing editors; said paper is to be financed from the Conference Work Fund and supplemented by special offerings from the churches.

SECTION II - CONFERENCE PRESIDENT

A. The Conference President shall fulfill his duties as outlined in the Discipline, paragraph 147-151 inclusive.

B. As chief administrative officer of the Conference, he shall have general supervision of the spiritual and business interests of the churches of the Conference, and shall hold two services in each church during the year under such date as he shall announce in advance, one of which shall be at the time of the monthly or quarterly business meeting.

STANDING RULES (Cont.)

C. The Conference President shall meet with the stewards of each church annually regarding their finances and particularly with regard to pastor's salary.

D. The Conference President shall announce the date of the Annual Conference Session in sufficient time before opening, in conformity with the Denominational Board (Paragraph 234 of the Discipline) and the Annual Conference shall convene at the call of the chair.

E. The Conference President shall be granted at least two weeks vacation with pay each year. It is recommended that an additional week's salary be paid as vacation expense.

SECTION III - BOARD OF CHURCH EXTENSION AND EVANGELISM

A. The Conference Board of Church Extension and Evangelism shall be known as the Conference Board of Administration. This Board shall be the official body of the Conference during the interim of Conference Sessions and its actions shall be binding until ratified or nullified by the succeeding Annual Conference Session.

B. The Conference Board of Church Extension and Evangelism shall be composed of the Conference President, the Conference Vice-President, the Conference Treasurer, the Conference Secretary, the Conference Board of Trustees, the President of the Women's Missionary Society, the President of Wesleyan Youth, the Conference Sunday School Secretary and one other member.

C. Until a local congregation is organized and received into the Conference, it shall be known as a Church Extension Project, and both the pastor and congregation shall be under the supervision of the Conference President and the Conference Board of Church Extension and Evangelism as to location, planning, policy and promotion.

D. Whenever an organized church finds it necessary to receive financial aid from the Conference, for its operational expenses, it shall be under the supervision of the Conference President and the Board of Church Extension and Evangelism with regards to decisions on finance,

STANDING RULES (Cont.)

pastoral relations and other major decisions of operation until it becomes self supporting.

E. The Conference Board of Church Extension and Evangelism shall fill vacancies.

SECTION IV - BOARD OF TRUSTEES

A. The Board of Trustees is designated as a Deed Examining Committee for the Conference. When deeds to Conference, Church, or Parsonage Properties are received, before being recorded, they shall be submitted to this Committee for examination and the insertion of such disciplinary clauses as necessary to make the property safe for the local church and the Conference (Paragraph 388 of the Discipline).

B. Plans for all major alterations and additions to present buildings and new buildings on all church properties are to be first passed by the Board of Trustees.

C. All legal papers pertaining to the holding of property, insurance, tax receipts, liabilities, etc., shall be held in a fire resistant, locked file in the Conference Office with the provision that local trustees may have copies of said papers provided at their expense. It shall be the duty of local pastors and trustees to submit such papers to the Conference President and Board of Trustees upon demand.

SECTION V - COMMITTEE ON ITINERACY AND ELDERS ORDERS

A. All recommendations to study or to travel under the direction of the Conference must be reviewed by the Committee on Itineracy and Elders Orders before the name of the candidate is placed on the Conference Roll. All ministers being received into the Conference must have their credentials examined by the Committee on Itineracy and Elders Orders before he is received into the membership of the Conference.

B. The Committee on Itineracy and Elders Orders shall provide for a Service of Ordination with the Conference Agenda Committee in advance whenever it has candidates to recommend for Elders Orders.

STANDING RULES (Cont.)

C. The Committee on Itineracy and Elders Orders, in conjunction with the Conference President, shall plan a Ministerial Convention to be held from the third Tuesday evening to the following Thursday noon of February of each year, the place and plan of meeting to be announced.

D. Conference preachers and supplies who have not been examined in the Wesleyan Methodist Discipline shall pass this course early in the first year of conference appointment. Failure to comply with this directive will be considered grounds for discontinuing said conference appointment.

SECTION VI - FINANCE

A. The fiscal year of the Conference shall close May 31 each year and the Conference Treasurer's books are to close June 10.

B. The Conference Secretary and Treasurer shall each be reimbursed to the amount of \$50.00 for each year's labor.

C. All budget monies shall be directed through the various treasurers in the Conference, i.e., W.M.S., Y.M.W.B., W.Y., and local church treasurers, and that duplicate receipts be mailed to the Conference Treasurer for recording, immediately on their issuance. The Conference Treasurer shall receive and record all budget monies either by cash or vouchers.

D. The Wesleyan "500" Plan

1. There shall be a Conference Secretary of Church Development. It shall be the duties of this secretary to promote the "500" Plan in each church of the conference and urge cooperation from each church. He will also furnish promotional material for the local "500" secretary, and will periodically check with the local secretaries as to the progress made and the number of members giving, and make monthly collections. He will also give counsel to those requesting same.

2. Each church shall elect a "500" Plan Secretary. It shall be the duties of the local Secretary to promote and to obtain members to this Plan.

STANDING RULES (Cont.)

3. All monies disbursed from this fund shall be considered a loan and shall be paid back monthly according to the size and type of loan.* Thus, this will be a revolving fund.

* NOTE: No loan shall be made until a note is signed for the loan.

4. Types of loans, payments and interest are as follows:

a. Land--one percent of loan per month; six percent interest included.

b. Social Hall and Sunday School Rooms, as a first unit--one tenth of one percent of loan per month plus interest. No interest for the first year, one percent the second year, two percent the third year, three percent the fourth year, four percent the fifth year and five percent the sixth year and remaining years.

c. Parsonage or Church Buildings--one percent of loan per month at five percent interest included.

5. Payments shall start three months from the date of opening service. All loans and details are to be worked out with the Conference Board of Church Extension and Evangelism.

SECTION VII - MINISTERS AND LOCAL CHURCHES

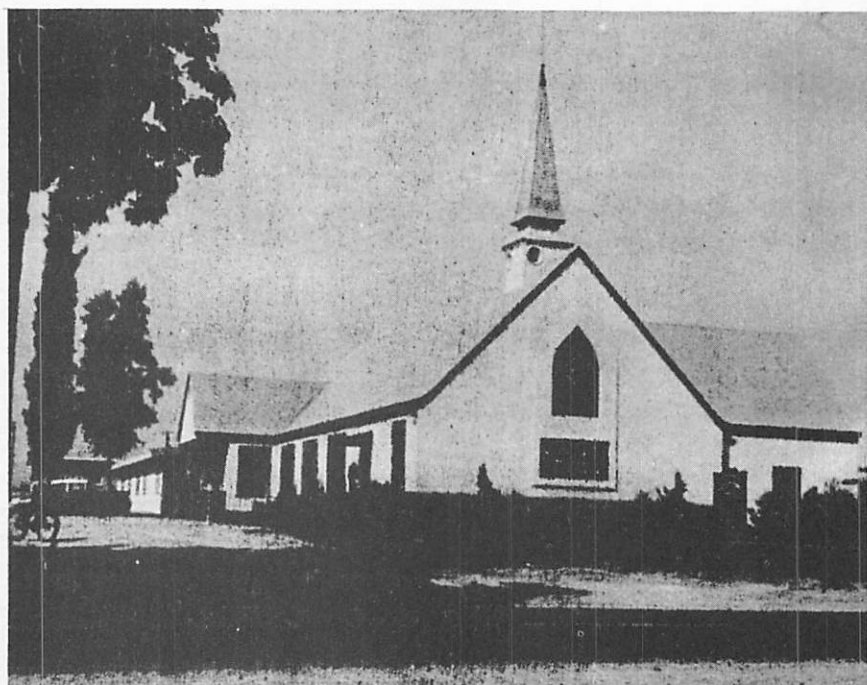
A. New pastors shall assume their duties the second Sunday following the rise of Annual Conference. Any arrangement contrary to this rule shall be cleared with the Conference President and his Advisory Board.

B. All charges shall pay the moving expenses of the incoming pastor within the bounds of the Conference.

C. In case of the absence of a pastor from his church for more than two weeks, he shall advise the Conference President of his absence and the arrangements made for pulpit supply.

STANDING RULES (Cont.)

- D. Each pastor is to be granted at least two weeks of vacation with pay each year. It is recommended that an additional week's salary be paid as vacation expense.
- E. Each pastor shall report to the Conference President monthly on forms prepared for that purpose, showing the condition of his church.
- F. It is the responsibility of each local church to pay taxes on its properties prior to their becoming delinquent; receipts for said payments shall be mailed to the Conference President's office immediately.
- G. It shall be the duty of the pastor to see that all property held by the Conference on his charge is insured against loss by Fire, Public Liability and Vandalism, in the name of the Conference for replacement cost as established by a qualified appraiser, and that a statement of insurance be mailed to the Conference President by the Insurance Broker.
- H. Each church shall pay its budget in ten monthly payments, the first payment on or before August 1.
- I. The meeting for the election of local church offices shall be held the first Wednesday in May and the elected officers shall take office June first following.
- J. All local treasurers shall close their books at the end of the fiscal year (May 31).
- K. Each pastor shall forward two copies of his statistical report, one of which shall be returned to him after Conference, to the Conference Treasurer two weeks before Annual Conference, who in turn shall forward the same to the Statistical Committee for recording at least five days before the opening of the Conference Session.



Arrow Highway Church
The Seat of Conference for the Special Session



Rev. Virgil A. Mitchell
General Secretary of
Church Extension & Evangelism
and
Denominational Representative
to the Special Session

MINUTES
 of the
 SPECIAL SESSION
 of the
 CALIFORNIA CONFERENCE
 of the
 WESLEYAN METHODIST CHURCH
 OF AMERICA

held at
 ARROW HIGHWAY CHURCH
 Covina, California
 APRIL 6, 1961

RECORD OF ATTENDANCE

ELDERS - STATIONED LIST

Charles H. Butcher
 Coral W. Butcher
 Orval C. Butcher
 William G. Butcher
 Sherwood I Eddy
 George E. Hawley
 John H. Henley
 Clinton W. Jones
 James H. Judy
 Archy L. Mudgett

Eldred V. Perkins
 Leonard J. Reckard
 Malcolm R. Robertson
 Richard L. Rossow
 George J. Stoddard
 George A. Thomas
 C. DeVere Wilson
 Lee R. Hoge
 Edward L. Eddy
 Claton G. Butcher

ELDERS - SUPPLIES

Derric E. Johnson

Edward N. LeJeune

RECORD OF ATTENDANCE (Cont.)

CONFERENCE PREACHERS

W. Eugene Welliver

Ollie J. Philpot

DELEGATES

Paul Berk, Lemon Grove
 William Dawsey, Lemon Grove
 Joe Estebo, Lemon Grove
 Ruth Henley, Carlsbad
 Harold Steed, Sacramento
 Raymond Wagner, Sacramento
 Harold LaFollette, Covina
 Evelyn Buell, Sunland
 Jack Spencer, Sunland
 Max Trayer, Covina
 Alleric Cox, El Monte
 Irene Snow, El Monte
 Lillian Fahy, El Monte
 Lou Hogan, El Monte

Jane Vogt, El Monte
 Flora Bigham, Norwalk
 Eulalia Jillson, Covina
 Maye Hawley, San Gabriel
 Elzie Gordon, San Gabriel
 Bud Marsh, Lakeside
 Wilma Ogden, Lawndale
 Margaret Hosto, Lawndale
 Walter Galusha, Bostonia
 Zeora Galusha, Bostonia
 Sylvia Pranter, Bostonia
 Kenneth Wilch, Whittier
 Dorothy Stark, La Puente

JOURNAL OF PROCEEDINGS

The California Conference of the Wesleyan Methodist Church of America met for a special session in the Arrow Highway Church, Covina, California, April 6, 1961, at 9:05 A.M.

James Judy led the devotions, reading Rom. 5:1-10 and speaking on "The Rich Heritage" we have in Jesus.

The roll was called and 22 ministers and 27 delegates answered the call of their names.

The Conference President reported that the elder's transfer of Lee Hoge and Claton Butcher, from the Iowa Conference, and Edward Eddy, from the Indiana Conference had been received.

A motion was made and seconded that the Special Committee on Full Time Conference President, appointed by the Conference Board of Church Extension and Evangelism, be given a seat in the Conference with power to vote. The motion was amended to read "be given an honorary seat in the Conference". The motion, as amended, was adopted.

A motion was made and seconded that the platform and the first eight rows of seats in the auditorium be the bar. The motion carried.

A motion carried to adopt the Orders of the Day as made by the Special Committee. See Report No. 1

A motion carried that the Church Extension Secretary, Rev. Virgil Mitchell, be invited to present the report of the Committee.

Archy Mudgett, secretary of the Committee, at Rev. Mitchell's request, read Items 1 and 2 of the report. Rev. Mitchell read the remainder.

A motion carried to receive the report and to adopt it item by item.

A motion was made and seconded to adopt Item 1.

JOURNAL OF PROCEEDINGS (Cont.)

A motion carried to vote by ballot on accepting the report.

Eugene Welliver, James Judy, Lee Hoge and Claton Butcher were appointed tellers.

Balloting for Item 1 resulted in 46 votes in favor of adoption and 3 against. Item 1 was adopted. See Report No. 2.

Conference recessed for twenty minutes and was then called to order.

A motion carried to add "and all utilities" to Item 2 a. (1) so it will read (1) Salary - \$100.00 per week or \$433.00 per month and all utilities.

Item 2 was adopted by a ballot of 44 in favor and 5 against. See Report No. 2.

A motion was made and seconded to adopt Items 3 and 4 with the Conclusion en toto and that it be included in the Minutes, that a copy be sent to the Wesleyan Methodist for publication and a copy be given the local churches to be inserted in the local church bulletin. The motion was adopted by a rising vote. See Report No. 2.

Rev. Mitchell suggested that a definite policy be worked out concerning the following items:

1. Define the work of the Conference President as to Conference visitation and service.
2. The basis of travel and office expense
3. The policy of the Conference President holding revival meetings outside the bounds of the Conference, ministerial conventions, including remuneration for same.
4. Clarify the financial obligation of the local church or pastor regarding certain special requests made for the services of the President, including the policy of telephone calls for the same.
5. Fraternal relationship to other groups and organizations.
6. Vacation, how long, if with pay and/or vacation pay.

A motion carried that the present Special Committee give consideration to the above items and report to the

JOURNAL OF PROCEEDINGS (Cont.)

Conference Board of Extension and Evangelism for approval and the report then presented to the Annual Conference.

The election of Conference President was taken up. After a nominating ballot was cast the electing ballot was cast.

Archy Mudgett received a majority of ballots cast and was declared elected President of the Conference.

Adjourned by limitation of time.

The Conference was called to order at 1:50 P.M.

Archy Mudgett accepted the invitation of the Conference, through the election, to serve as President, expressing his dependence upon God and asking for the forbearance, prayer and help of the Conference.

A consecration service was held in which, by the laying on of hands of the former Presidents of the Conference and prayer Archy Mudgett was consecrated to the work of President.

A motion was made and seconded to extend our appreciation and thanks to Clinton Jones for his service to the Conference. It was carried by a rising vote.

A motion carried that a liaison relation be established between the Conference President and the President-elect and that the new President take office at Annual Conference at the same time as the other officers.

A motion carried to express our deep appreciation to the local church for their hospitality.

A motion was made and seconded that the Advisory Board review the minutes of this special session, approve them and have them included in the minutes of the next Annual Conference. It was carried. See Report No. 3.

JOURNAL OF PROCEEDINGS (Cont.)

A motion was made and seconded that this special session of Conference be adjourned. The motion carried.

John Henley, Secretary

REPORTS

REPORT NO. I

AGENDA
SPECIAL SESSION

Registration - \$2.00

- 9:00 A.M. Opening Song - Orval Butcher
Call to Order - Conference President,
Clinton W. Jones
Seating of Delegates and Members of Conference
Establish the Bar of Conference
Adoption of Orders of the Day
Report of Special Committee
- 10:15 A.M. - Coffee Break
- 10:30 A.M. - Resumption of Business
- 12:00 noon - Adjourn for Lunch
- 12:15 P.M. - Lunch Served
- 1:15 P.M. - Resumption of Business
Adjournment of Conference
- 4:30 P.M. or Any Time Thereafter - Evening Meal Served

REPORT NO.2

SPECIAL COMMITTEE ON FULL TIME CONFERENCE PRESIDENT

We, your committee elected by the California Conference Board of Church Extension and Evangelism on March 13, 1961, submit the following report:

1. We recommend the electing of a full time Conference President.
2. We recommend that this office be financed by a minimum annual budget of \$10,000.00 based upon the following:
 - a. Anticipated expenditures:
 - (1) Salary - \$100.00 per week or \$433.00 per month and all utilities
 - (2) Travel Expense - \$200.00 per month
 - (3) Office Expense (less equipment) - \$25.00 per week or \$100.00 per month.
 - (4) House - \$100.00 per month
 - b. Anticipated income:
 - (1) Conference President's Salary & Expense
Budget last year \$4,176.00
 - (2) Re-allocation of 60% of Conference Church Extension
Budget 1,166.00
 - (3) Grant - Wesleyan World
Headquarters 1,000.00
 - (4) Salary Support - Wesleyan
World Headquarters 1,020.00
 - (5) Differential to be made up - An increase in the receipt of funds is anticipated due to the full time Conference President and offerings taken for this office being credited on the Conference Budget askings of the local church 2,638.00

\$ 10,000.00

REPORT NO. 2 - SPECIAL COMMITTEE (Cont.)

3. The Conference President's Position

The Conference President is to the Wesleyan Methodist Church what the captain is to an army. The church of Jesus Christ has been compared to an army. As an army the church must have a commander-in-chief. In the New Testament, Christ is the commander-in-chief, the true head of the church. As a part of the church of Jesus Christ, the Wesleyan Methodist Church recognizes Christ as the divine leader or commander-in-chief of the church. However, Christ as our commander-in-chief must work through human instrumentality--generals, captains, lieutenants and on down to the privates in accomplishing His will and mission for his army. Respecting the functions of church activities for Wesleyan Methodists, our founding fathers and subsequent legislative bodies have revolved our church life around three levels of operation--the general church, the annual conference, and the local church. Each level is assigned certain privileges, duties, and obligations. Neither level of operation is to infringe on the other or to be abused by the other. Therefore, to properly function, each level of our church life must have a leader. On the denominational level the general of the army is our three General Superintendents; on the conference level the captain is the conference president; and on the local level the lieutenant is the pastor. Without an officer or with merely a part-time officer on any level of church life will hinder the Wesleyan Methodist Church in accomplishing its God-given task of world-wide evangelism. Experience in other conferences and the present day challenge of the California Conference argues the necessity of a full time captain to lead this segment of God's army.

He is the contact man between the conference and the general church. As such he becomes the key to proper liaison between the local, conference and general church. This is essential for a cohesive and coordinated program of church life. As contact man it becomes his responsibility to promote the interests of the departments of the denomination throughout the conference in the manner and to the extent authorized by the General Conference or the Board of Administration. Likewise, it is his responsibility to execute the program and carry out what the annual conference directs. He is to

REPORT NO. 2 - SPECIAL COMMITTEE (Cont.)

secure the fullest support and cooperation possible from the pastors and local churches to the conference and denominational program.

He is the coordinator of church practices on the conference and local level. The general church expects him to be deeply spiritual and to seek a deeply spiritual emphasis by pastors and churches. He is to be sound in the doctrinal position of the church and see that pastors and churches are committed to this position. He is to give attention to raising general and conference budgets. He is to look after the legal matters of the conference and safeguard the same to the conference and denomination. He is to help local churches keep their legal transactions proper. He needs to, in some cases, offer advice in the care and up-keep of the premises of the local church. He is to promote the circulation of our church literature. He is to receive such reports and gather such statistics as the conference and denomination may outline.

4. The Responsibilities and Duties of the Pastor and Local Church to the Conference President

It is the duty of the pastor and the local church to recognize him. He is the pastor's pastor. He is available for counsel and assistance. He is not only ready to render service on his official visits but ready to help in a multitude of ways at other times as well. Churches without a pastor or churches in the process of calling a pastor will find his assistance invaluable.

It is the duty of the pastor and local church to receive him. He should be made welcome both in the parsonage and in the church. He should be taken into full confidence by pastor and people. He should be kept informed of every major phase of planning of the local program. His counsel and assistance should be sought. He should be appraised of the problems and needs as they arise.

The church and pastor should respect him. He is the chosen leader of the conference. He is the servant of pastor and people alike. His method of approach may

REPORT NO. 2 - SPECIAL COMMITTEE (Cont.)

be different to the approach you think you would make if you were in his place. He will not always be correct in his judgments. However, the golden rule should be exercised. Once the leader is chosen he should have the backing of ministers and laymen. The choice of a full time president should be done on a long range basis. While the government of the church provides for the election of a president each year, I feel this body should elect your leader with the idea in mind that you will re-elect him yearly again and again and again. Changing presidents frequently gives instability to the work and will not attract or develop efficient leadership. Pastors should give the conference president the kind of support they want their church members to give them. Likewise, laymen should back him as they would want their fellow church members to back them if they were elected to an office in the local church.

It is the duty of the pastor and people to recommend him. Boost him to your church and people. "Talk him up" to outsiders. Help him to make his official visits and ministeries meaningful.

It is the duty of the pastor and people to remunerate him. This remuneration should be commensurate with the salaries paid the pastors and must be in keeping with the dignity such an office carries. God's servant is worthy of his hire. Dollars invested here pay great dividends. Each church should pay its share. Various methods have been followed by local churches in accomplishing this. Some put it into the budget, others raise an offering at the time of his visit to the churches, etc. Select a plan suitable to your situation and give due diligence to reach your quota.

CONCLUSION: A full time presidency is a well established pattern in our church life. All of our conferences the size of the California Conference have full time supervision. In a number of cases conference much smaller than you have full time leaders. In fact all conferences except four have full time presidents. Furthermore, geographical distances and present day opportunities demand a full time president. The conference needs and is able to afford such leadership. As we come now to consider the matter of a full time pres-

REPORT NO. 2 - SPECIAL COMMITTEE (Cont.)

idency may God give us the vision to see the need and may He grant us the ability to feel the challenge and may He make known the leadership of the Holy Spirit in choosing and may He help us to sacrifice, labor, and cooperate to make such a venture successful!

The General Church believes in you and we enter this venture with you. We are happy to have a part in the work. We gladly share the financial cost with you and make this cash grant and monthly allowance with the understanding that you launch this program as outlined by your committee and suggested in my remarks to you.

Respectfully submitted,
Clinton W. Jones
Virgil A. Mitchell
A. L. Mudgett
Wm. Marshburn
Ted Stewart
Orval Butcher, on the
invitation of the committee

REPORT NO.3

ADVISORY BOARD

May 11, 1961

We, the undersigned, have examined the minutes of the April 6, 1961, special session of the Annual Conference held at Arrow Highway Church, and do hereby approve the same.

Wm. Marshburn
A. L. Mudgett
Clinton W. Jones

W. M. S. CONFERENCE OFFICERS



Edna Judy, President



Otta Mae Eddy, Vice-Pres.



Gwen Butcher, Secretary



Dorothy Berk, Treasurer

MINUTES of the WOMEN'S MISSIONARY SOCIETY of the CALIFORNIA CONFERENCE

June 26-28, 1961

CONFERENCE OFFICERS

- PRESIDENT - Edna Judy, 10600 Woodward Avenue,
Sunland California
- VICE-PRESIDENT - Otta Mae Eddy, 7435 S. Norwalk Blvd.
Whittier, California
- SECRETARY - Gwen Butcher, 1345 Skyline Drive
Lemon Grove, California
- TREASURER - Dorothy Berk, 7915 Barton Drive
Lemon Grove, California
- WOMEN'S WORLD FELLOWSHIP SECRETARY - Lillian Fahy,
11818 E. Rio Hondo Parkway, El Monte, Calif.
- STATISTICAL SECRETARY - Leona Hoge, 4455 W. 168th St.
Lawndale, Calif.
- MAGAZINE SOLICITOR - Evelyn Buell, 10600 Woodward Ave,
Sunland, California
- Y.M.W.B. SUPERINTENDENT - Arlene Eddy, 1450 Peach St.
El Cajon, California
- LITERATURE AND READING COURSE SECRETARY - Lucille Emery
1771 N. Sierra Bonita, Pasadena, California
- LINEN CHAIRMEN - Flora Bigham and Louise Snapp,
11610 Orr and Day Rd., Norwalk, California

ATTENDANCE ROLL

CONFERENCE OFFICERS

Edna Judy
Gladys Cook

Otta Mae Eddy
Margaret Spence
Noreen Reckard

Dorothy Berk
Lucille Emery

PAST PRESIDENTS

Agnes Hewitt
Flora Bigham

Levita Welliver
Evelyn Buell
Lillian Fahy

Catherine Wilson
Lorna Wright

NEW PRESIDENTS

Elsa Weaver
Pearl Wagner

Doris Schumacher
Bonnie Weller

Joyce Mudgett
Dorothy Butcher

DELEGATES

Florence Taylor
Wilma Stoddard
Laura Fleishman
Eva Nichols
Joan Thrush

Arlene Eddy
Janet VanTatenhove
Dorothy Guillaume
Norma Phillips
JoAnne Schuhmacher
Lois Welch

Ruth Sanchez
Asilea Carnett
Leona Hoge
Verda Greenway
Emil Forrest

PASTOR'S WIVES

June Jones

Mabel Jordon
Mrs. Wm. Plants

Elvina Perkins

LOCAL SOCIETY PRESIDENTS

- CARLSBAD - Amparo Martinez, 3342 Roosevelt St.,
Carlsbad, California
- CHESTER - Edith Miller, P. O. Box Drawer 247,
Chester, California
- COVINA (Arrow Highway) - Joyce Mudgett, 935 E. Galatea St.
Azusa, California
- EL CAJON (Bostonia) - Louise Halliday, Box 385
La Mesa, California
- EL MONTE - Lillian Fahy, 11818 E. Rio Hondo Parkway,
El Monte, California
- LAKE SIDE - Levita Welliver, 9839 River Street
Lakeside, California
- LA PUENTE - Doris Schumacher, 502 Radway,
La Puente, California
- LAWNDALE - Wilma Ogden, 14616 Osage,
Lawndale, California
- LEMON GROVE (Skyline) - Lorna Wright, 3440 Tolas Court,
National City, California
- NORWALK - Virginia Crain, 11320 Bluejay Lane,
Santa Fe Springs, California
- PHOENIX - Gladys Cook, 1832 E. Southern,
Phoenix, Arizona
- SACRAMENTO (Arcade) - Pearl Wagner, 3705 Wm. Way,
Sacramento 21, California
- SUNLAND - , 10950 Leolang Ave.,
Sunland, California
- SUNNYMEAD - Betty Hartman, c/o O. J. Philpot,
24528 Dracea Ave., Sunnymead, California
- WHITTIER - Elsa Weaver, 2208 Howard Street
Whittier, California
- WINSLOW - Mabel E. Jordan, 416 W. Gilmore,
Winslow, Arizona
- Not Organized -
- FAIR OAKS (Lincoln Oaks) - Dorothy Butcher, 5517 Dewey Dr.
Fair Oaks, California
- FALLON, NEVADA - Mrs. Wm. Plants, P. O. Box 413,
Fallon, Nevada



Mrs. Arlene Eddy
Conference Sessions
Devotional Leader



Rev. Edward L. Eddy
Missionary Rally
Speaker



During the Women's Fellowship Hour, Tuesday Morning

DAILY PROCEEDINGS

The opening session of business for the Women's Missionary Society of the California Conference was set for June 26, 1961, at 8:30 A.M. at Azusa College, Azusa, California. The meeting was opened with a Welcome by our President, Edna Judy. Dorothy Butcher led group in singing of the hymn "I Need Thee Every Hour". Arlene Eddy, Pastor's wife from Bostonia and returned missionary from Sierra Leone, led the first devotional period on the subject of "Consecration" referring to John 18:37. The theme chosen for the 1961 session was "To every creature today."

The roll call was made and taken.

The first six rows of seats were designated as the bar of conference.

A motion was supported that there be a Committee on Committees. The following members were elected: Evelyn Buell, Otta Mae Eddy, Joyce Mudgett, Catherine Wilson, Dorothy Berk.

Tuesday was announced as "Visitation Day" and "Tag Day" for the subscriptions to the Wesleyan Missionary Magazine. Pearl Wagner and Mrs. James were appointed as solicitors.

The following societies gave their reports: Carlsbad, Bostonia, Covina, Lawndale, Norwalk, Pasadena, Phoenix, Sunland, Sunnymead, Sacramento (Arcade).

Our President, Edna Judy, read her report. (Report No. 1) A motion with words of appreciation was made by Otta Mae Eddy and supported by a rising vote of thanks by the conference body.

The meeting adjourned for Committee work.

June 26, 1961, 2:00 P.M.

The session opened with the singing of "I Love to Tell the Story", June Jones led in prayer. Arlene Eddy directed the singing of our theme chorus "To Ev'ry Creature--Today" of which she is the Composer. She continued with her devotions with Matthew 28:6-- "Go Tell".

Roll call was taken and the minutes of the last session were read and approved.

The report of the Committee on Committees was read by Dorothy Berk. Upon motion it was accepted. (Report No. 2)

DAILY PROCEEDINGS (Cont.)

Rev. L. J. Reckard brought a message on "Operation Hand Clasp" on behalf of the National Association of Evangelicals.

Handbooks were passed out from our Denominational headquarters.

A questionnaire from our area chairman, Marie Lind, was given to each society.

El Monte gave their annual report.

The meeting was adjourned for committee work.

June 27, 1961, 8:30 A.M.

The first hour the ladies visited the Annual Conference to hear Rev. David Scott, President Emeritus of the California Conference, give a very wonderfully inspired message from God's Word.

A "Get-Aquainted" Time was held with the Whittier W.M.S. serving refreshments. Edna Judy extended a warm Welcome to all and especially to the visitors and expressed thanks and appreciation to the Whittier Society, for the lovely and delicious refreshments.

Following the social hours Arlene Eddy spoke to the ladies concerning the "Women's Institute" in Sierra Leone.

We were dismissed for lunch.

June 27, 1961, 1:30 P.M.

The session opened with the singing of the theme chorus "To Ev'ry Creature---Today". We were led in prayer by Wilma Stoddard.

Arlene Eddy again led in a devotional, "We go", based upon Psalm 119:18 and Isaiah 42: 6,7.

The roll call was taken and the minutes of the last two sessions were read and approved.

The Courtesy Committee introduced Rev. Antonio Cortes and Rev. Antonio Rios from Cananea, Mexico. They each gave greetings with Ruth Sanchez interpreting. Comments were made on the needs of the field by Edna Judy. A question and answer time on Mexico was held.

Mrs. Mabel Jordon from Winslow, Arizona, was introduced and gave greetings. Special prayer was led by Joyce Mudgett for the need of the church in Winslow.

The Auditing Committee gave their report and it was accepted. (Report No. 3)

DAILY PROCEEDINGS (Cont.)

The report of the Treasurer was read and accepted. (Report No. 4)

The report of the Statistical Secretary was read and accepted. (Report No. 5)

The Chairman of the Nominating Committee read their report. (Report No. 6) A motion was made to cast a unanimous ballot to elect the officers was supported after the introduction of the candidates.

The Skyline W.M.S. presented their annual report in the form of a very interesting playlett entitled "The Musings of a Missionary Homemaker".

Whittier presented a very clever Missionary Magazine Skit entitled "Dress Parade".

The following annual reports were given: Chester, Lakeside, La Puente.

The Courtesy Committee presented Doris Schumacher, wife of the new pastor at La Puente.

The following reports were given: Whittier and Fair Oaks (Lincoln Oaks).

Following a request from the President that the above mentioned skits from Skyline and Whittier be sent to the Literature Department at Headquarters the session closed with prayer led by Bonnie Weller.

June 28, 1961, 8:30 A.M.

The meeting was opened with Mrs. George Stoddard leading the singing of "Constantly Abiding" and of our theme chorus. Prayer was offered by Otta Mae Eddy.

Arlene Eddy again brought the devotions, "God's Presence" from James 5:16 and Matthew 21:22.

The roll was taken and the minutes of the last session read and approved.

The Courtesy Committee introduced Mrs. Wm. Plants, minister's wife from Fallon, Nevada. She gave greetings testifying to how God had led them to their work in a wonderful way in Arizona and Nevada.

The Literature Chairman gave her report. (Report No. 7) and passed out the Reading Certificates.

The Women's World Fellowship Secretary gave her report. (Report No. 8)

The Y.M.W.B. Superintendent read her report. (Report No. 9)

The above reports were accepted upon motion.

The results of the "Tag Day" were given.

DAILY PROCEEDINGS (Cont.)

The following report of the Executive Board was read and accepted by motion after words of explanation by the President:

1. That each society pay 50¢ per active member into the Conference Working Fund.
2. That the Executive Board appoint a Missionary Chairman for each area to work under their direction and that she visit each society in her district at least once during the year.

The session was dismissed with prayer by Edna Judy.

June 28, 1961, 2:00 P.M.

The meeting opened with prayer led by Mrs. Agnes Hewitt.

Our devotional led by Arlene Eddy, "We go forth" was based on John 15:16. Special prayer followed, led by June Jones.

The report of the Efficiency and Plan of Work Committee was read and accepted upon motion. (Report No. 10)

A motion was passed to send each Local President a copy of the above report as soon as possible.

The report of the Committee on Resolutions and Thanks was read and adopted. (Report No. 11)

The President, Edna Judy, gave each officer a token of thanks.

An installation ceremony for the Conference Officers was held, entitled "United or Untied, 'I' makes the difference."

A motion was passed that the secretary protem send greetings from the conference to those absent from the sessions.

The Missionary Service for the evening was announced and needs from Mexico were presented.

The Courtesy Committee introduced our Denominational Representative and General Superintendent, Dr. H. K. Sheets, who brought greetings from World Headquarters.

Our West Coast Missionary Convention for October 20-22 was announced and each lady was urged to attend.

A motion for final adjournment was made and passed with all unfinished business to be left in the hands of the Executive Board.

We were dismissed with prayer.

REPORTS

REPORT NO. 1

PRESIDENT'S REPORT

June 1, 1961

Personal Greetings to Officers, Delegates, and Friends:

This past year held numerous and varied experiences! I thank God for them all; His Strength is real to me.

I hold no personal desire to serve except for God's Will. Please pray for God's purpose and choice to be known in all Conference decisions.

The following is my report of this year's activities in the interest of the Conference W.M.S.:

In July, I was privileged to meet with the Whittier Society.

In October, we planned the schedule for visitation of Dr. Alton E. Liddick, Executive Secretary of the DEPARTMENT OF WORLD MISSIONS. Services were held in Sacramento, Los Angeles, and San Diego Areas. A trip into Mexico was also planned for the Liddicks; Mrs. Gwen Butcher, Rev. Judy, and myself traveled with them. We were greatly challenged by the spiritual needs for the Gospel of the Lord Jesus. We appreciated the Christian fellowship of the Rios and Cortes families! We pledge our continued prayers and support of their labours for Christ.

I enjoyed meeting with the El Monte Society in November and January.

In the interest of the W.M.S., I attended the Conference Board of Church Extension & Evangelism, 9 times; and the Camp Meeting Board, 3 times.

Correspondence total 234 letters, cards, etc.; plus several phone calls.

The Executive Board met and plans for W.M.S. Conference continued; items of business were cared for.

May we consider anew the URGENCY of our day! In Chapter 9 of the Gospel of John read- (1) "as Jesus passed by" (2) "he saw...a need" (3) he immediately prescribed healing for the man. His disciples questioned Him...Jesus replied: "I must work the works of him that sent me, while it is day, for the night cometh, when no man can work." Later, the Pharisees discredited Jesus' work as evil.

REPORT NO. 1 - PRESIDENT'S REPORT (Cont.)

The question remains: 'Are we willing TODAY to give the message of Salvation TO EVERY CREATURE? We are not assured of tomorrow; "The night cometh..."

God wants our precious time; our best energies; FIRST place in our heart, motives, and actions!

Our theme is: "TO EVERY CREATURE - TODAY."

Respectfully submitted,
Edna Judy

--- REPORT NO. 2

COMMITTEE ON COMMITTEES

We, the Committee on Committees, submit the following report:

NOMINATING COMMITTEE FOR CONFERENCE OFFICERS:

Joyce Mudgett - Chairman
Catherine Wilson
June Jones
Elsa Weaver

COURTESY COMMITTEE: Otta Mae Eddy

MAGAZINE REPORTER: Lillian Fahy

MISSIONARY MAGAZINE "TAG DAY": Pearl Wagner
Blanche James

AUDITING COMMITTEE: Ruth Sanchez
Leona Hoge

EFFICIENCY STANDARD AND PLAN OF WORK:

Edna Judy, Chairman
Florence Taylor
Dorothy Berk
Evelyn Buell

RESOLUTIONS AND THANKS: Otta Mae Eddy - Chairman
Levita Welliver
Norma Philips

REPORT NO. 2 - COMMITTEE ON COMMITTEES (Cont.)

Respectfully submitted,
Dorothy Berk - Chairman
Joyce Mudgett
Catherine Wilson
Otta Mae Eddy
Evelyn Buell

REPORT NO.3

AUDITING COMMITTEE

We, the Auditing Committee, have examined the Conference W.M.S. and Y.M.W.B. Books and find them to appear correct.

Ruth M. Sanchez
Leona Hoge

REPORT NO. 4

TREASURER'S REPORT - 1960 - 1961

	<u>CASH ON HAND</u> <u>6-10-60</u>	<u>CASH</u> <u>RECEIVED</u>	<u>VOUCHERS</u> <u>RECEIVED</u>	<u>DISBURSE-</u> <u>MENTS</u>	<u>CASH BALANCE</u> <u>ON HAND</u>
WORLD MISSIONS:					
General - - - - -	\$ ---	\$ 418.06	\$ ---	\$ 418.06	\$ ---
Africa - - - - -	---	176.21	---	176.21	---
Haiti - - - - -	---	884.92	---	884.92	---
Honduras - - - - -	---	100.00	---	100.00	---
India - - - - -	---	42.63	---	42.63	---
Japan - - - - -	---	110.83	---	110.83	---
Mexico - - - - -	2120.54	1490.50	127.10	3538.14	200.00
Taiwan - - - - -	---	59.14	---	59.14	---
American Indians - - - - -	---	93.50	---	93.50	---
Australia - - - - -	---	102.00	---	102.00	---
Jewish Work - - - - -	---	56.84	---	56.84	---
Medical Missions - - - - -	---	25.50	---	25.50	---
Mission Equipment - - - - -	---	8.00	---	8.00	---
White Christmas - - - - -	---	160.58	---	160.58	---
Transistor Radio - - - - -	---	45.00	---	45.00	---
CHURCH EXTENSION AND EVANGELISM					
General - - - - -	---	31.55	---	31.55	---
Card Call - - - - -	---	2.00	33.00	35.00	---
Self Denial Offering - - - - -	---	103.81	---	103.81	---

HEPHZIBAH - - - - -	---	185.62	95.00	280.62	---
EDUCATION - - - - -	---	234.75	5.00	239.75	---
Honorary Enrollment - - - - -	---	45.00	5.00	50.00	---
General Dues - - - - -	---	429.00	---	429.00	---
Conference Working Fund - - - -	116.58	245.19	---	375.86	(16.09)
Conference Extension - - - - -	---	106.28	---	106.25	---
Miscellaneous - - - - -	---	199.60	45.00	244.60	---
Local Church Work - - - - -	---	---	1071.48	1071.48	---
Other Objects - - - - -	---	---	1537.65	1537.65	---
<hr/>					
T O T A L S - - - - -	\$2237.12	\$5354.48	\$2919.23	\$10326.92	\$ 183.91

Dorothy Berk
W.M.S. Treasurer

REPORT NO. 5

STATISTICAL REPORT

NAME OF SOCIETY	MEMBERSHIP				MISCELLANEOUS TOTALS						RECEIPTS				
	Active	Honorary	Gain	Loss	Total Meetings Held	Subscriptions Wesleyan Missionary	Efficiency Standard Rating (%)	No. Boxes	No. Pounds	Membership Dues	Offerings	Voucher Receipts	Total Receipts for the Year	Old Balance from Last Year	GRAND TOTAL
Arrow Highway (Covina)	47	-	-	7	23	26	-	7	38	\$ 47.00	\$ 2040.07	\$ ---	\$ 2087.07	\$ 434.20	\$ 2521.27
Bostonia (El Cajon)	19	3	3	-	78	15	-	-	-	22.00	188.53	---	210.53	2.30	212.83
Carlsbad	3	-	-	4	-	-	-	-	-	3.00	15.00	150.00	168.00	24.56	192.56
Chester	27	3	30	-	-	6	50	-	7	30.00	337.06	---	367.06	62.08	459.14
El Monte	20	11	-	2	37	34	75	22	36	31.00	1506.22	836.92	2374.14	4.83	2379.07
Lakeside	15	1	-	3	16	10	75	5	60	16.00	406.80	---	422.80	15.83	438.73
La Puente	8	1	2	-	-	3	-	-	-	9.00	82.48	---	91.48	---	91.48
Lawndale	10	3	-	3	21	9	55	-	-	13.00	399.18	---	412.18	29.30	441.48
Los Angeles	-	-	-	25	-	-	-	-	-	---	---	---	179.15	8.10	187.25
Norwalk	8	1	2	-	12	7	-	-	51	9.00	170.15	---	---	---	---
Pasadena	8	1	-	3	16	10	-	7	-	9.00	281.32	---	290.32	.38	290.70
Phoenix	10	2	2	-	12	10	-	1	-	12.00	105.31	---	117.31	28.07	145.38
Arcade (Sacramento)	27	5	13	-	11	15	80	2	31	32.00	530.84	276.60	839.44	34.64	874.08
Skyline (Lemon Grove)	72	27	10	-	63	60	-	-	-	99.00	1136.36	---	1235.36	21.09	1256.45
San Gabriel	12	1	5	-	6	-	-	3	-	13.00	202.00	---	215.00	---	215.00
Sunland	19	1	-	2	20	11	80	-	8	20.00	550.19	45.70	615.89	125.58	741.47
Sunnymead	12	-	2	-	-	-	-	-	-	12.00	318.04	---	330.04	130.76	460.80
Whittier	71	25	8	-	22	28	-	30	115	96.00	2574.95	300.00	2970.95	179.11	3150.06
TOTALS	388	85	77	49	337	244	-	77	346	\$473.00	\$10844.50	\$1609.22	\$12926.72	\$1131.03	\$14057.75

REPORT NO. 5 - STATISTICS (Cont.)

NAME OF SOCIETY	DISBURSEMENTS										
	World Missions General	American Indians (Brainerd)	Australia	Jewish Evangelism	Medical Missions	White Christmas Offering	Church Extension and Evangelism (Card Call, Alaska)	Self Denial Offering	Hephzibah	Education Budget and Gifts	Honorary Enrollment
Arrow Highway (Covina)	\$ 289.96	\$ ---	\$ ---	\$ ---	\$ ---	\$15.00	\$ ---	\$ ---	\$ ---	\$100.00	\$ ---
Bostonia (El Cajon)	116.00	---	---	---	3.00	---	---	---	11.00	10.00	---
Carlsbad	145.00	---	---	---	---	---	---	---	---	---	5.00
Chester	28.00	3.50	3.50	---	---	---	5.00	27.54	4.90	---	3.00
El Monte	1060.62	---	---	3.00	3.00	---	---	5.00	24.25	10.00	---
Lakeside	65.00	---	5.00	3.42	3.50	10.00	5.00	5.00	7.00	14.75	---
La Puente	25.00	---	---	---	5.00	---	---	---	15.00	---	---
Lawndale	126.16	---	6.25	3.00	---	---	---	---	7.72	---	11.00
Los Angeles	---	---	---	---	---	---	---	---	---	---	---
Norwalk	74.30	---	7.00	---	---	---	---	---	9.80	---	---
Pasadena	126.41	---	---	---	---	---	12.00	---	30.20	---	1.00
Phoenix	20.00	---	---	---	---	---	---	---	---	---	---
Arcade (Sacramento)	276.14	---	---	12.45	---	---	---	---	61.40	---	24.00
Skyline (Lemon Grove)	607.21	36.25	51.25	17.47	---	---	---	---	38.75	---	10.00
San Gabriel	---	---	---	---	---	---	---	---	---	---	---
Sunland	260.82	---	---	---	---	---	---	---	50.00	---	---
Sunnymead	---	---	---	---	---	---	---	---	6.00	5.00	---
Whittier	1034.75	56.50	32.50	---	---	---	24.00	---	45.50	225.00	---
T O T A L S	\$4255.37	\$96.25	\$105.50	\$39.34	\$14.50	\$25.00	\$46.00	\$37.54	\$311.52	\$364.75	\$54.00

REPORT NO. 5 - STATISTICS (Cont.)

NAME OF SOCIETY	DISBURSEMENTS								
	General Dues	Conference Working Fund	Conference Extension	Community Missions	Local Church Work	Other Objects	Total Disbursements	New Balance On Hand	GRAND TOTAL
Arrow Highway (Covina)	\$ 47.00	\$ ---	\$ ---	\$ ---	\$ 452.56	\$1208.35	\$ 2112.87	408.40	\$ 2521.27
Bostonia (El Cajon)	22.00	5.50	---	---	44.55	---	212.05	.78	212.83
Carlsbad	---	---	---	---	25.50	---	175.50	17.08	192.56
Chester	30.00	---	---	---	228.79	14.00	348.23	110.91	459.14
El Monte	31.00	5.00	---	---	384.10	839.92	2365.89	13.18	2379.07
Lakeside	16.00	4.00	---	---	4.78	290.81	434.26	4.47	438.73
La Puente	9.00	---	---	---	13.34	24.14	91.48	---	91.48
Lawndale	10.00	2.50	6.25	---	109.83	142.08	424.79	16.34	441.13
Los Angeles	---	---	---	---	---	---	---	---	---
Norwalk	9.00	7.00	18.05	---	8.10	54.00	187.25	---	187.25
Pasadena	9.00	---	---	---	---	112.09	290.70	---	290.70
Phoenix	---	---	---	---	83.28	---	103.28	42.10	145.38
Arcade (Sacramento)	32.00	6.75	---	---	252.25	72.17	737.16	136.92	874.08
Skyline (Lemon Grove)	72.00	17.25	---	---	135.17	271.10	1256.45	---	1256.45
San Gabriel	13.00	---	---	---	25.00	177.00	215.00	---	215.00
Sunland	20.00	---	---	---	285.51	43.00	659.33	82.14	741.47
Sunnymead	18.00	---	---	---	398.49	12.00	439.49	21.31	460.80
Whittier	96.00	25.00	100.00	200.00	597.10	595.20	3031.55	118.51	3150.06
T O T A L S	\$434.00	\$73.00	\$124.30	\$200.00	\$3048.35	\$3855.86	\$13085.28	\$972.12	\$14057.40

REPORT NO. 6

NOMINATING COMMITTEE

We, the Nominating Committee of the California Conference Annual Missionary Society, wish to submit the following nominations:

PRESIDENT - Edna Judy
 VICE-PRESIDENT - Otta Mae Eddy
 SECRETARY - Gwen Butcher
 TREASURER - Dorothy Berk
 WOMEN'S WORLD FELLOWSHIP SECRETARY - Lillian Fahy
 STATISTICAL SECRETARY - Leona Hoge
 MAGAZINE SOLICITOR - Evelyn Buell
 Y.M.W.B. SUPERINTENDENT - Arlene Eddy
 LITERATURE & READING SECRETARY - Lucille Emery
 LINEN CHAIRMEN - Flora Bigham, Louise Snapp

Respectfully submitted,
 Joyce Mudgett, Chairman
 Kathryn Wilson
 June Jones
 Elsa Weaver

REPORT NO. 7

LITERATURE SECRETARY

	1960	1959
Total Number of Study Boods read-	220	128
Total Number of Readers-	70	25
Number Reading 6 Study Books-	24	13
Number Reading 4 Study Books-	19	9
Total Number Societies Reading-	11	7

I believe only three organized Missionary Societies reported they read no books from the study list.

Mrs. Lucile Emery, Lit. Sect'y

REPORT NO. 8

WOMEN'S WORLD FELLOWSHIP SECRETARY

Prayer Circles - - - -	25	Women's World Fellow-	
Prayer Partners - - -	216	ship Covenant	
Missionaries Chosen -	250	Signers - - - -	80
Y.M.W.B. Prayer Partners	4	Observing Monthly	
Pieces of literature		Prayer & Fast - -	1
mailed out - - - -	8000		

Respectfully submitted, Lillian Fahy

REPORT NO. 9
YOUNG MISSIONARY WORKERS' BAND
CONFERENCE SUPERINTENDENT'S ANNUAL STATISTICAL REPORT

BAND NAME	Active Members	Honorary Members	Total Membership	Meetings	Efficiency Rating	World Missions	Church Extension	Education	Hepzibah	Special Projects	TOTAL (Band Credit)	Non-Credit	GRAND TOTAL
Bostonia (El Cajon)	84	28	112	11	80%	\$ 68.24	\$ 23.15	\$ 30.00	\$ ---	\$ ---	\$ 121.39	\$ 2.24	\$ 123.63
Chester	25	5	30	12	70%	---	23.00	56.00	---	---	79.00	---	79.00
El Monte	11	-	11	12	75%	43.93	---	---	---	---	43.93	.66	44.59
La Puente	32	11	43	13	90%	22.36	17.32	15.13	---	4.33	59.14	.86	60.00
Lakeside	28	72	100	13	100%	195.63	1.90	24.87	14.34	16.48	253.22	2.22	255.44
Lawndale	10	7	17	13	100%	57.42	1.38	3.00	---	1.94	63.74	1.00	64.74
Phoenix	30	-	30	10	75%	44.25	51.70	88.00	---	---	183.95	4.10	188.05
Arcade (Sacramento)	25	5	30	14	80%	67.60	---	---	---	36.55	104.15	1.00	105.15
San Gabriel	13	-	13	5	-	26.50	---	15.00	7.80	---	49.30	1.00	50.30
Skyline (Lemon Grove)	285	30	315	12	85%	163.80	48.73	6.80	25.00	---	244.33	6.30	250.63
Sunland	-	-	-	9	-	8.41	.55	---	---	---	8.96	---	8.96
Vista (Mexican Chapel)	-	-	-	-	-	46.25	---	---	---	---	46.25	---	46.25
Whittier	80	35	115	12	50%	116.11	---	---	---	---	116.11	2.77	118.88
T O T A L S	623	193	816	136	-	\$860.50	\$167.73	\$238.80	\$47.14	\$59.30	\$1373.47	\$22.15	\$1395.62

REPORT NO. 10

EFFICIENCY AND PLAN OF WORK COMMITTEE

We recommend:

Credit %

That the Efficiency Standard be read in the society at the beginning of each Conference year. 5%

That arrangements be made for one missionary prayer meeting each month. 5%

That a minimum of 10 meetings be held during the year at which time prayer requests are presented and business transacted 5%

That at least 1 public meeting be held 5%

That a Women's World Fellowship Secretary be elected and that she promote the Prayer Partner Plan. 5%

And, that she report the number of Prayer Partners to the Conf. Women's World Fellowship Sec. within 60 days after the annual Conference 5%

That a solicitor be elected for the Wesleyan Missionary, gaining not less than two subscriptions a year, and that she use the Conference Key Number on all subscriptions. 5%

That the President, Secretary, Treasurer, and the equivalent of 75% of the active membership be subscribers to the "Wesleyan Missionary". 5%

That a Literature and Reading Course Secretary be elected and that she report to the Conference Reading Course Secretary by January 15. 5%

That 10% of the active members read at least 4 of the recommended Reading Course books. 5%

That a W.M.S. Delegate be elected to attend the annual W.M.S. Conference, and that she be instructed by the local society the amount to be pledged for the annual Conference project. 5%

That the \$1.00 W.M.S. membership Dues, active and honorary, be sent undivided to the Conference W.M.S. Treasurer for forwarding to the General Fund. 10%

That we achieve at least a 10% gain in local membership; however, seeking to invite every woman in the church as a member. 5%

That each society pay 50¢ per active member into the Conference Working Fund. 10%

W.M.S. President or Vice Pres., W.M.S. Delegate and Y.M.W.B. Supt. attend the annual Conference and provision be made for her expenses. 10%

REPORT NO. 10 - EFFICIENCY AND PLAN OF WORK (Cont.)

Local statistical reports be mailed to the
Conference Statistical Secretary by June 10th. . . . 10%

Respectfully sybmitted,
Edna Judy - Chairman
Dorothy Berk
Evelyn Buell
Florence Taylor

REPORT NO. 11

RESOLUTIONS AND THANKS

Most of all we wish to express our thanks to God for the presence and guidance of the Holy Spirit as we met to do business for the cause of missions.

Be it resolved that we, the California Conference Women's Missionary Society, express our heartfelt thanks and sincere appreciation to:

1. Edna Judy, our conference President, and her co-workers for their consecrated leadership throughout the past year and the conference time.

2. Arlene Eddy, a returned missionary from Africa, for her very inspirational devotions and the valuable information she gave us concerning the women of Africa.

3. Antonio Rios and Antonio Cortes, our Mexican Pastors, who brought greetings from Mexico through the very capable interpreter Ruth Sanchez.

4. Lillian Fahy who so willingly filled the office of Secretary.

5. The Local Societies responsible for their displays and skits, El Monte for their theme banner, and Whittier for the delicious refreshments.

6. Moyna Nash for her patience and help in securing our rooms and making us comfortable. Derric Johnson and the young people for their wonderful help in the dining room and kitchen.

Respectfully submitted,
Otta Mae Eddy
Norma Phillips
Levita Welliver

MINUTES of the CALIFORNIA WESLEYAN YOUTH June 29, 1961



Seated: Joanna Brown, Derric Johnson
Standing; Janet Mudgett, Eugene Welliver

CONFERENCE OFFICERS

PRESIDENT - Rev. Derric Johnson, 411 Billow Drive
San Diego 14, California

VICE-PRESIDENT - Rev. Eugene Williver, 9839 River St.
Lakeside, California

SECRETARY - Joanna Brown, 1731 Glencoe Drive,
Lemon Grove, California

TREASURER - Janet Mudgett, 935 E. Galatea Street
Azusa, California

CONFERENCE OFFICERS (Cont.)

CENTRAL DISTRICT CHAIRMAN - O. J. Philpot

SOUTHERN DISTRICT CHAIRMAN - Dave Mann

NORTHERN DISTRICT CHAIRMAN - Claton Butcher

EASTERN DISTRICT CHAIRMAN - Hugh K. Otto

SUBSCRIPTION CHAIRMAN - Donnah Wenstrom

YOUTH DAY, JUNE 29, 1961



Pictured above is Rev. O. J. Philpot playing & singing for the California Youth. In the background are Rev. Eugene Welliver (left), Youth Vice-President, and Miss Joanna Brown (right), Secretary.

- YOUTH DIRECTORY

<u>LOCAL SOCIETY</u>	<u>PRESIDENT</u>	<u>SECRETARY</u>
Arcade	Wayne Kebler	Joan Bower
Arrow Highway	Jeanine Jones 450 E. Myrtle Ave. Glendora, Calif.	Stanley James 5359 Citrus Ave. Azusa, Calif.
Chester	Barbara Shaver Chester, Calif.	Loren Medley Chester, Calif.
El Monte	Jack Van Tatenhove 17171 Hemlock El Monte, Calif.	Sherron Cook 11627 Hemlock El Monte, Calif.
Lakeside	Micheal Prendergast 10718 Valle Vista Dr. Lakeside, Calif.	Tisha Harkness ____ Rockcrest R. Lakeside, Calif.
Lawndale	Pat Donahue 4455 W. 169th Lawndale, Calif.	Vivian Stepanek 4730 166th St. Lawndale, Calif.
Phoenix	Joyce Gould 1620 E. Yale St. Phoenix, Arizona	Penny Dallard 4308 E. Vernon Phoenix, Arizona
Skyline	Alden Butcher 1345 Skyline Dr. Lemon Grove, Calif.	Ruth Ann Bagley 8570 Wade San Diego, Calif.
Sunland	Carol Dahl 106 Whitegate Ave. Sunland, Calif.	Meredith Spencer ____ Kyle St. Sunland, Calif.
Sunnymead	Walter Carter 24137 Myers St. Sunnymead, Calif.	Elaine Driess 24320 Ironwood Sunnymead, Calif.
Whittier	David Meadows 7722 S. Norwalk Blvd. Whittier, Calif.	Irene Johnson 11029 Mines Blvd. Whittier, Calif.

ROLL CALL

<u>NAME</u>	<u>A.M.</u>	<u>P.M.</u>
Donnah Wenstrom	P	P
Joan Rossow	P	P
Jeanine Jones	P	P
Susan Trayer	P	P
Stanley James	P	
Janet Mudgett		P
Patty Jo Eddy	P	P
Barbara Shaver	P	P
Jack Van Tatenhove	P	P
Louise Terry	P	P
Lorna Laird	P	P
Stanley Shelton	P	P
Laura Lundquist	P	P
Pat Donahue	P	P
Lois Stokes	P	P
Hugh K. Otto	P	P
Kathy Bagley	P	P
Alden Butcher	P	P
Jerry Martenson	P	P
Linda Ranta	P	P
Merdith Spencer	P	P
Maxine Dougherty	P	P
Walter Carter	P	P
Dave Meadows	P	P
Anne Brown	P	P
Irene Johnson	P	P

(Pastors names not included)

DAILY PROCEEDINGS

The Annual Conference of California Wesleyan Youth was called to order by the President, Rev. Derric Johnson, at 9:00 A.M., June 29, 1961. The devotional time featured Rev. Schumacher of La Puente.

The first five rows of seats and the rostrum were established as the bar with the consent of the conference.

The following sessions committees were elected:

FINANCE AND PLAN OF WORK - Jerry Martenson, Donnah Wenstrom, Dave Meadows, O. J. Philpot

THANKS AND RESOLUTIONS - Joan Rossow, James Judy

STATISTICAL - Gene Welliver, Kathy Bagley, Alden Butcher, Pat Donahue

NOMINATING - Meredith Spencer, Orval Butcher, Anne Brown, Arlene Eddy

Motion prevailed that the conference adjourn for committee work.

11:00 A.M., June 29, 1961

The second session was called to order by the president.

The Auditing Committee report was read and adopted. (See Report No. 1)

The Treasurer's report was read and adopted. (See Report No. 2)

The President read his report and it was adopted. (See Report No. 3)

With the consent of the conference the report of the nominating committee was held until after the election of the president.

The Statistical Committee report was read and adopted. (See Report No. 5)

The Finance and Plan of Work Committee report was read and adopted. (See Report No. 6)

The Thanks and Resolutions Committee report was read and adopted. (See Report No. 7)

Rev. Derric Johnson was re-elected Conference Youth President.

The president appointed a committee to study the possibility of college age representation and recognition. They also were to discuss plans for Youth Day 1962 and recommend a date and place.

DAILY PROCEEDINGS (Cont.)

Motion prevailed that the conference adjourn for lunch and committee work.

1:15 P.M., June 29, 1961

The president called the third session to order.

The committee appointed by the president read the following report:

In order to give recognition to college Wesleyan Youth and yet to maintain equal representation for all churches in the conference, we propose the delegates of conference be elected in the following manner:

The president and two delegates for every society up to twenty-five members; one delegate for every additional twenty-five members. (Art. 5 Sec. 2 Wesleyan Discipline)

The committee also recommends that the annual convention of Wesleyan Youth convene at the time of Wesleyan youth camp in the latter part of August 1962.

Respectfully submitted,

Orval Butcher

Dave Meadows

Otta Mae Eddy

Joan Rossow

Joanna Brown

The report of the committee was considered in two parts. Motion prevailed to accept the recommendation of the committee regarding delegate representation and it was created as a standing rule for the California youth conference. The recommendation for the date and place of Youth Day was rejected.

The Nominating committee read its report and it was adopted. (See Report No. 4)

The following officers were elected:

VICE-PRESIDENT - Gene Welliver

SECRETARY - Joanna Brown

TREASURER - Janet Mudgett

CENTRAL DISTRICT CHAIRMAN - O. J. Philpot

SOUTHERN DISTRICT CHAIRMAN - Dave Mann

NORTHERN DISTRICT CHAIRMAN - Claton Butcher

EASTERN DISTRICT CHAIRMAN - Hugh K. Otto

SUBSCRIPTION CHAIRMAN - Donnah Wenstrom

Motion prevailed to retain Jim Judy as Camp Director this year.

DAILY PROCEEDINGS (Cont.)

The suggestion was made that the churches be listed according to district, (Central, Southern, Northern, or Eastern), in the minutes to clarify the district areas. They are as follows:

NORTHERN - Arcade
 Chester
 Grass Valley
 Lincoln Oaks

EASTERN - Phoenix
 Winslow

SOUTHERN - Bostonia
 Lakeside
 Skyline

<u>CENTRAL</u> - Arrow Highway	Pasadena
El Monte	Sunland
La Puente	Sunnymead
Lawndale	Whittier
Norwalk	

Motion prevailed that we adjourn. Rev. Gene Wel-liver dismissed the conference with prayer.

Respectfully submitted,

Joanna Brown, Secretary



In the Dining Hall on Youth Day



Dave Meadows is a typical local president as he represents the Whittier W.Y.



Connie, Jackie & Patty Eddy in African costume assisting their parents in the Conference Missionary Rally

* * * * *

REPORTS

REPORT NO. 1

AUDITING COMMITTEE

We, the members of the auditing committee, have examined the books of the conference Wesleyan Youth, and find them to appear in order with the following observations: Note that it appears check #106 in the amount of \$25.25 was recorded as a conference dues disbursement, whereas it was actually issued to cover a bad check received in the prior year and not cleared at the time the funds were transferred to another bank. The conference dues receipts and disbursements are therefore overstated in the amount of \$25.25. We also note that the total amount of receipts should be \$3,110.44 instead of \$3,010.44 as entered on the statement. The bank reconciliation shows the balance to be \$46.11 as stated.

Don L. Joslyn, Chairman
Edward L. Eddy

REPORT NO. 2

TREASURER'S REPORT

	Balance 1960	Receipts	Disburse- ments	Balance on Hand
General Dues	\$ ---	\$ 197.71	\$ 197.71	\$ ---
Conference Dues	110.84	199.98	168.50	142.32
Youth Camp	212.86	2584.00	2790.17	6.69
Foreign Missions	---	100.00	100.00	---
Education	---	3.50	3.50	---
TOTALS	\$323.70	\$3085.19	\$3256.38	\$152.51

REPORT NO.3

PRESIDENT'S REPORT

To the Annual Wesleyan Youth Convention of the California Conference: Greetings in the Matchless Name of our Lord and Savior, Jesus Christ.

This past year has been marked with the glowing presence of the Spirit of God, and it has been a real pleasure to serve you of Wesleyan Youth and Him Who directs our paths.

Some of the official highlights of the year have included:

- (1) Organizing the Norwalk Wesleyan Youth group with a charter membership of 42;
- (2) Speaking at one of the Los Angeles Area Youth Rallies at the El Monte Church;
- (3) Speaking at the First Sacramento Area Youth Rally with over 75 teens attending;
- (4) Addressing the Annual Youth Banquet at Arrow Highway with almost 80 present;
- (5) Participating in 2 Youth Camps -- Quaker Meadows in August 1960 and Cedar Glen in June 1961;
- (6) Traveling to Denver, Colorado, for Area Youth Presidents convention.

I thank God for your kind understanding, and great patience this past year. As we face the future, may the joy of the Lord be our all consuming portion --- Then our lives in Him will be complete, contented and I trust, contagious.

Respectfully submitted,
Rev. Derric Johnson, Pres.

REPORT NO.4

NOMINATING COMMITTEE

VICE-PRESIDENT - Gene Welliver

SECRETARY - Joanna Brown

TREASURER - Janet Mudgett

CENTRAL DISTRICT CHAIRMAN - O. J. Philpot

SOUTHERN DISTRICT CHAIRMAN - Dave Mann

NORTHERN DISTRICT CHAIRMAN - Claton Butcher

EASTERN DISTRICT CHAIRMAN - Hugh K. Otto

REPORT NO. 4 - NOMINATING COMMITTEE (Cont.)

SUBSCRIPTION CHAIRMAN - Donnah Wenstrom
 CONTRIBUTING EDITOR to the "Launch" will be the Wesleyan
 Youth President

Submitted by the Nominating Committee
 Meredith Spencer
 Orval Butcher
 Arlene K. Eddy
 Anne Brown

REPORT NO. 6

FINANCE AND PLAN OF WORK

The committee recommends that the budget be as follows:

General dues	\$1.75
Youth Camp75
Conference Expense50
TOTAL (per member) . . .	\$3.00

Suggestions for encouragement of payment of dues:

1. Designate the fund to which the money shall be applied when it is sent.
2. Individual youth groups work on individual payments. The conference funds should be raised apart from the total offering for the local group.
3. District chairmen and pastors should promote the payment of dues.
4. W.Y. members tithe spending money.

REMINDER: Nickels and dimes do add up.

Suggestions for money-making projects:

1. car washes
2. cake or bake sales
3. candy sales
4. pancake breakfasts
5. spaghetti dinners
6. pizza parties

Submitted by the Finance and Plan of Work
 Committee

J. Martenson	D. Meadows
D. Wenstrom	O. J. Philpot

REPORT NO.5

STATISTICAL REPORT

NAME OF LOCAL SOCIETY	Active Members	Associate Members	Wesleyan Youth Subscriptions	Efficiency Standard Rating			General Dues	Conference Dues	Conference Extension	Education
				A	B	C				
Arcade	-	-	-	-	-	-	\$ 25.00	\$ 12.50	\$ -	\$ -
Arrow Highway	6	-	-	-	-	-	-	-	-	-
Bostonia	-	-	3	-	-	-	67.06	13.26	-	-
Chester	10	-	-	-	-	-	-	-	-	-
El Monte	9	2	-	-	-	-	10.50	3.00	-	-
Lakeside	-	8	-	-	-	-	-	-	-	-
Lawndale	-	-	-	-	-	-	-	-	-	-
Norwalk	22	15	-	-	-	-	-	-	-	-
Phoenix	15	1	1	-	-	X	-	-	-	-
Skyline	60	50	-	-	-	-	-	75.00	-	-
Sunland	9	5	5	-	-	-	11.25	15.75	-	-
Sunnymead	-	-	-	-	-	-	-	-	-	-
Whittier	30	-	6	-	-	-	49.00	14.00	-	-
TOTALS	161	80	15	-	-	-	\$162.81	\$133.51	\$ ---	\$ ---

REPORT NO. 5 - STATISTICAL REPORT (Cont.)

NAME OF LOCAL SOCIETY	World Missions	General Church Extension and Evangelism	Local Work	Youth Camp	Total Receipts plus Balance	Total Disbursements	Cash on Hand
Arcade	\$ ---	\$ ---	\$ 24.00	\$ 12.50	\$ 94.32	\$ 79.00	\$ 15.32
Arrow Highway	---	---	30.99	---	164.60	30.99	133.61
Bostonia	---	---	---	48.45	128.77	128.77	---
Chester	---	---	---	---	340.82	240.30	100.52
El Monte	---	---	34.37	4.50	72.07	52.37	19.70
Lakeside	---	---	64.59	---	82.27	64.59	17.68
Lawndale	---	---	50.00	---	70.00	50.00	20.00
Norwalk	---	---	---	---	56.62	55.76	.82
Phoenix	---	---	250.00	---	257.50	250.00	7.50
Skyline	15.00	---	893.41	1302.00	2526.44	2495.91	30.53
Sunland	---	---	28.79	100.00	163.44	155.79	7.65
Sunnymead	---	---	---	---	110.43	89.89	20.54
Whittier	1400.00	---	300.00	21.00	1809.92	1805.00	4.92
TOTALS	\$1415.00	\$ ---	\$1676.15	\$1488.45	\$5877.20	\$5497.87	\$378.79

REPORT NO. 7

THANKS AND RESOLUTIONS

In behalf of the California Wesleyan Youth, the Thanks and Resolutions Committee submit the following:

We wish to express our deepest appreciation to Rev. Orval Butcher, Rev. Derric Johnson, and the staff for a terrific youth camp at Quaker Meadow in August, 1960, and again at Cedar Glen in June, 1961.

For excellent planning and promotion in district banquets, singspirations, and rallies, we express our thanks to the district chairmen.

We would especially like to thank the pastors and youth leaders who have promoted and attended the district and conference youth activities.

Be it resolved that we give diligence to greatly adding to the number of Wesleyan Youth in the California Conference. We must share the Lord Jesus with other young people and bring them into this glorious fellowship. Our leaders are the best and there are many young people who will be pointed to Christ by their teaching and influence.

Respectfully submitted,

Rev. Jim Judy
Joan K. Rossow